

# Hot Food Table/Drop-In Hot Food Well models 9560 & 9560N

model  9560-1  9560-2  9560-3  9560-4  9560-5  9560-6  
 9560-2N  9560-3N

**Description:**

Stainless steel drop-in, electrically heated hot food well unit with individually and thermostatically controlled wells. Separate control panel for field installation, prewired.

**Specifications:**

**UNIT TOP:** Top to be one piece 18 gauge stainless steel. Top openings to be die-stamped with raised perimeter rims.

**FOOD WELLS:** Units fitted with compliment of 12" x 20" x 6 1/2" deep, electrically heated, sealed food wells, individually and thermostatically controlled. Unit prewired to controls, mounted on separate stainless steel panel. Note: If optional drains & manifold are ordered, common gate is provided installed.

**UNIT BODY:** Fully insulated exterior body of corrosion resistant steel.

**CONTROLS:** Controls prewired to junction box mounted on separate stainless steel panel for field installation in counter front. Connections to heating elements to be located outside of heated zone to avoid wiring deterioration. 208 or 240V operation. (120V available on request).

**Standard Features:**

- Individually controlled wells for maximum operator control
- True thermostatic control for precise food temperatures
- Drains available as option for wet operation
- Approved for installation in either stainless or laminate counter work
- Units listed under N.S.F. standard 4 (excludes "N" models)
- UL approved (excludes "N" models)

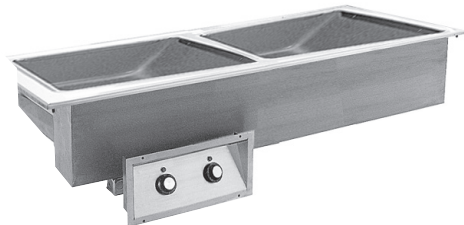
**Options & Accessories:**

- Adaptor bars
- Extended thermostatic lead

model 9560-4 shown



model 9560-2N shown

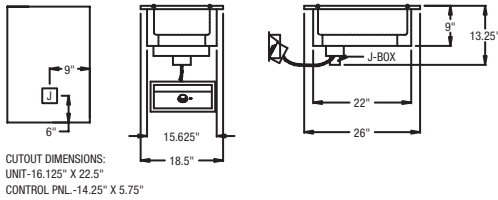


**LEGEND FOR MODEL # 9560-1**

(1) ELEMENT, 1100 WATTS

CHOOSE ONE:

- 120V/60Hz/1Ph/9.2Amps
- 208V/60Hz/1Ph/5.3Amps
- 240V/60Hz/1Ph/4.6Amps



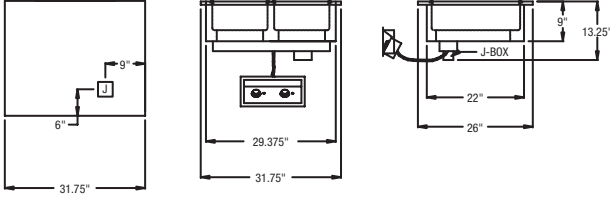
CUTOUT DIMENSIONS:  
UNIT-16.125" X 22.5"  
CONTROL PNL.-14.25" X 5.75"

**LEGEND FOR MODEL # 9560-2**

(2) ELEMENTS, 2200 WATTS

CHOOSE ONE:

- 120V/60Hz/1Ph/18.4Amps
- 208V/60Hz/1Ph/10.6Amps
- 240V/60Hz/1Ph/9.2Amps



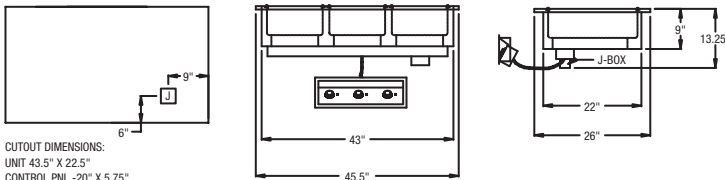
CUTOUT DIMENSIONS:  
UNIT-29.875" X 22.5"  
CONTROL PNL.-14.25" X 5.75"

**LEGEND FOR MODEL # 9560-3**

(3) ELEMENTS, 3300 WATTS

CHOOSE ONE:

- 120V/60Hz/1Ph/27.6Amps
- 208V/60Hz/1Ph/15.9Amps
- 240V/60Hz/1Ph/13.8Amps



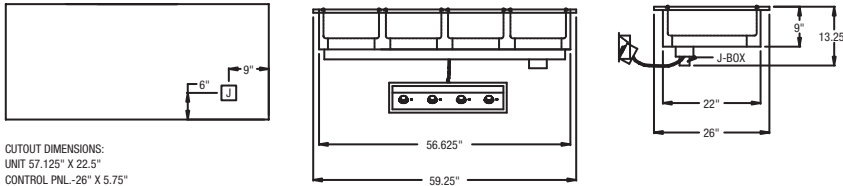
CUTOUT DIMENSIONS:  
UNIT 43.5" X 22.5"  
CONTROL PNL.-20" X 5.75"

**LEGEND FOR MODEL # 9560-4**

(4) ELEMENTS, 4400 WATTS

CHOOSE ONE:

- 120V/60Hz/1Ph/36.8Amps
- 208V/60Hz/1Ph/21.2Amps
- 240V/60Hz/1Ph/18.4Amps



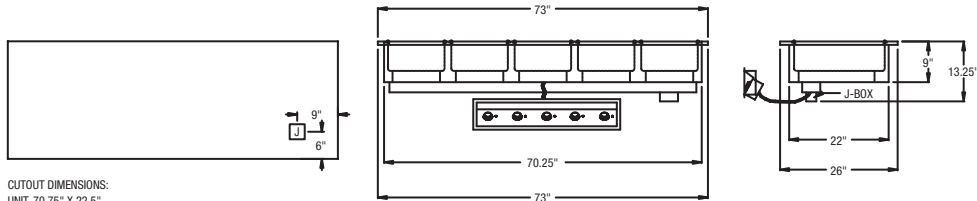
CUTOUT DIMENSIONS:  
UNIT 57.125" X 22.5"  
CONTROL PNL.-26" X 5.75"

**LEGEND FOR MODEL # 9560-5**

(5) ELEMENT, 5500 WATTS

CHOOSE ONE:

- 120V/60Hz/1Ph/46.0Amps
- 208V/60Hz/1Ph/26.5Amps
- 240V/60Hz/1Ph/23.0Amps



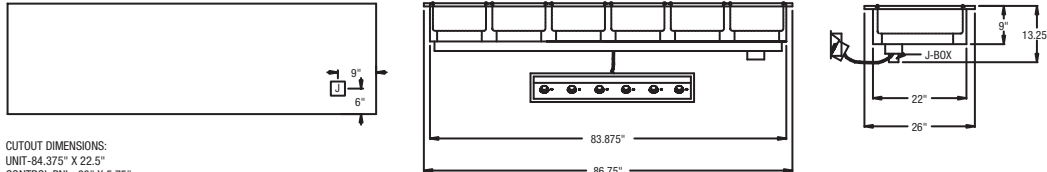
CUTOUT DIMENSIONS:  
UNIT-70.75" X 22.5"  
CONTROL PNL.-32" X 5.75"

**LEGEND FOR MODEL # 9560-6**

(6) ELEMENT, 6600 WATTS

CHOOSE ONE:

- 120V/60Hz/1Ph/55.2Amps
- 208V/60Hz/1Ph/31.7Amps
- 240V/60Hz/1Ph/27.6Amps



CUTOUT DIMENSIONS:  
UNIT-84.375" X 22.5"  
CONTROL PNL.-38" X 5.75"

Model	L	D	12" x 20" Pan Cap.	Cut Out Size		No. of Elements	Watts	Amps / 60 / 1 PH			Ship Wt.
				Unit	Control Panel			120V	208V	240V	
9560-1	18 1/2"	26"	1	16 1/8" x 22 1/2"	14 1/4" x 5 3/4"	1	1100	9.2	5.3	4.6	60
9560-2	31 7/8"	26"	2	29 7/8" x 22 1/2"	14 1/4" x 5 3/4"	2	2200	18.4	10.6	9.2	85
9560-3	45 9/16"	26"	3	43 1/2" x 22 1/2"	20" x 5 3/4"	3	3300	27.6	15.9	13.8	103
9560-4	59 5/16"	26"	4	57 1/8" x 22 1/2"	26" x 5 3/4"	4	4400	36.8	21.2	18.4	170
9560-5	73 1/16"	26"	5	70 3/4" x 22 1/2"	32" x 5 3/4"	5	5500	46	27.5	23	230
9560-6	86 11/16"	26"	6	84 3/8" x 22 1/2"	38" x 5 3/4"	6	6600	55.2	31.7	27.6	290
9560-2N	47.625"	18.5"	2	45.264" x 16.125"	14.25" x 5.75"	2	2200	18.4	10.6	9.2	108
9560-3N	69.142"	18.5"	3	66.327" x 16.125"	20" x 5.75"	3	3300	27.6	15.9	13.8	175

Power supply requires hard wiring to "J" box.

All regulatory approval excludes "N" models

