

Display Merchandiser Refrigerated Countertop models 40024

model 40024 40024SS

Description:

24" long x 24" deep self-contained single service, or pass-thru countertop display case on adjustable legs with insulated glass door, stainless steel exterior. Adjustable shelving and fluorescent illumination. Top-mounted R-134a forced air refrigeration system with high capacity evaporator coil and thermostatic control. Foamed in place, "CFC free" insulation and cordset for 115V operation.

Specifications:

CABINET EXTERIOR: Cabinet body to be stainless steel with glass display door and solid glass back. (MODEL 40024 with pass-thru door setup). Front louver panel to be die-formed stainless steel, allowing ventilation of condensing unit. Back louver panel to be a lighted sign panel (signage by others). Door opening frames to be stainless steel with ABS breaker strips and heater elements to prevent condensation on fronts. Unit to be supplied on 4" high adjustable leg set.

CABINET INTERIOR: Interior bottom to be all stainless steel with ABS plastic formed sided with molded shelf supports to hold two powder coat finished shelves provided. Interior light with external switch provided. Interior top with fluorescent lighting fixture. Unit insulated with CFC free, foamed in place urethane insulation. ABS interior sides provided with mirror to accentuate lighting and products.

DOORS: Door to be insulated glass, mounted on concealed hinges with stainless steel frames, magnetic gaskets, and handles.

REFRIGERATION: CFC free, HFC-134a refrigeration system with condensing unit, evaporator blower coil, condensate evaporator, and thermostatic control for operator adjustability. Unit totally prewired and to be supplied with 8' cordset (NEMA 5-15P) for 115V plug-in operation.

model 40024A shown



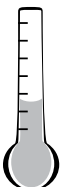
Standard Features:

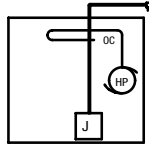
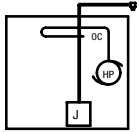
- Self-contained, top-mounted refrigeration system with thermostatic control, system utilizes "CFC free", R-134a refrigerant
- Insulated glass doors, stainless steel front louver panel - lighted sign panel on back louver
- Foamed in place "CFC free" urethane insulation
- Stainless steel exterior
- Adjustable shelving set up and condensate evaporator mounted at factory
- Fluorescent interior illumination
- Totally self-contained for plug-in installation
- Stainless steel louver panel on one side - lighted sign panel on other side (sign by others)
- Single service model 40024SSA with insulated glass back in lieu of hinged door

Options & Accessories:

- Door Lock

33°F to 40°F





LEGEND FOR MODEL #40024

AFF = ABOVE
FIXED FLOOR

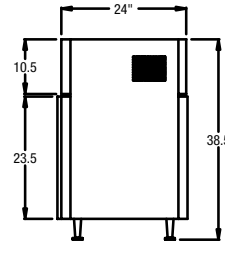
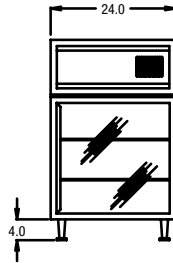
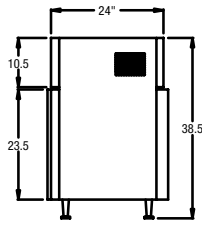
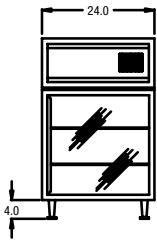
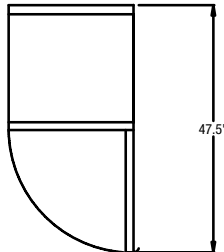
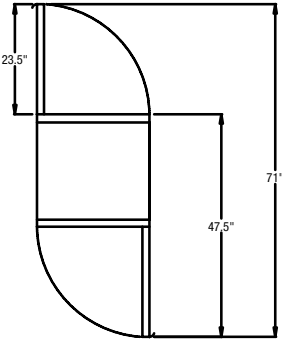
1/4hp COMPRESSOR
R134A REFRIGERANT
SPECIFY IF OTHERWISE

JUNCTION BOX
115V/60Hz/1Ph
5.9 Amps

9' LONG CORD SET (NEMA 5-15P)

OC CONDENSATE DRAIN 1/2"

HOT GAS CONDENSATE EVAPORATOR



Drawings are to be viewed in the same order as the chart

Unit Length	Door Opening Sizes - Interior Depths		
	Clearances Through Door		Interior Depth Behind
	Lt. to Rt.	Top to Bottom	Sliding Glass Door
24"	19 1/4"	18 1/2"	19"

Lighted Sign Panel Size:

Exposed Area: 21.5" x 8"
Overall Panel Size: 23.5" x 11.25"

Model	L	D	H	Style	Storage Shelves		H.P.	Volt	Amp.	NEMA	Ship Wt.
					Cu. Ft.	Sq. Ft.					
40024	24"	24 1/2"	38 1/2"	Pass-Thru	4.75	11*	1/4	115/60/1	5.9	5-15P	240
40024SS	24"	24 1/2"	38 1/2"	Single Service	4.75	11*	1/4	115/60/1	5.9	5-15P	240

* Includes interior bottom.

