



Reach-In Roll-Thru Double Door Heated model 2368PE

Description:

Randell Series 2000 Single Section Heated Roll-thrus are built for years of efficient, high performance service. The heating system offers the highest, most consistent performance available while maximizing usable interior space.

Specifications:

CABINET EXTERIOR: Cabinet body is constructed of all stainless steel, inside & out.

CABINET INTERIOR: Interior of cabinet is fully covered to meet N.S.F. standard #4. Solid core stainless steel interior floor is provided for long-term wear. The cabinet is foamed in place, CFC free urethane insulation. Stainless steel breaker strips are standard. Provided with stainless steel rack guides. Rack height: Maximum 66" high x 26" wide x 29" deep.

DOORS: Stainless steel front with stainless steel die-stamped liner with foamed in place CFC free urethane insulation. Doors are provided with three heavy-duty cam-fit hinges with stay-open feature. Doors are provided with heavy-duty chrome finished food pull and lock. The gasket is an easy to service and replace press-fit design.

HEATING SYSTEM: Heating system with solid state thermostatic control to allow temperature settings between 60° F. and 180° F. interior temperature with a high limit safety switch for operator safety. Heat is supplied with two strip heaters, located at the base of the interior, protected by the rack guides and is circulated throughout the space with a ceiling-mount recirculation fan. Unit supplies with master on/off switch and provided with an 8' cord and plug. Access to service points with simple tools is standard.



Standard Features:

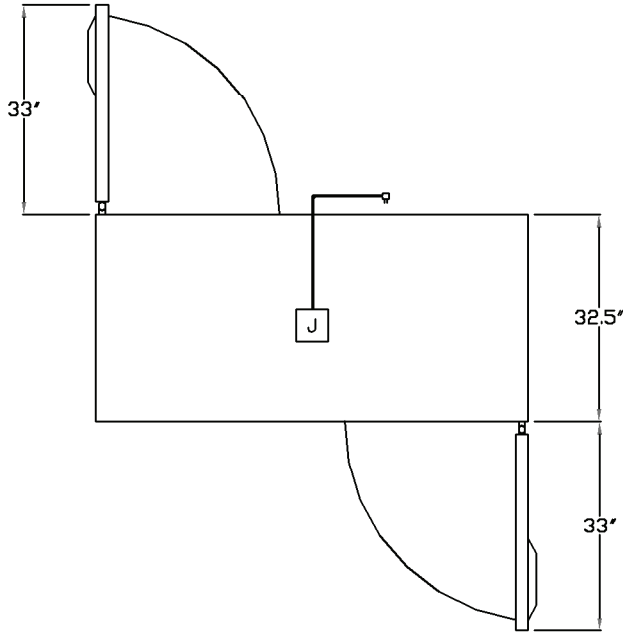
- All Stainless Construction
- 60° F. to 180° F. With High Limit Safety Switch
- C.F.C Free R-134a Refrigerant
- 8' Cord and Plug
- Digital Control
- Exterior LED Temperature Display
- Self-Closing, Cam Lift Hinges with 120° Open Feature (Lifetime Warranty)
- Triple Hinged Doors
- Cylinder Door Locks
- Solid Core Stainless Steel Interior Bottom
- Main Power Supply Switch
- Stainless Steel Interior Rack Guide
- Polyurethane Insulation (Minimum 2.5" Thick)
- Stainless Steel Removable Ramps
- Stainless Steel Breaker Strips
- Press-Fit Magnetic Door Gaskets

Options:

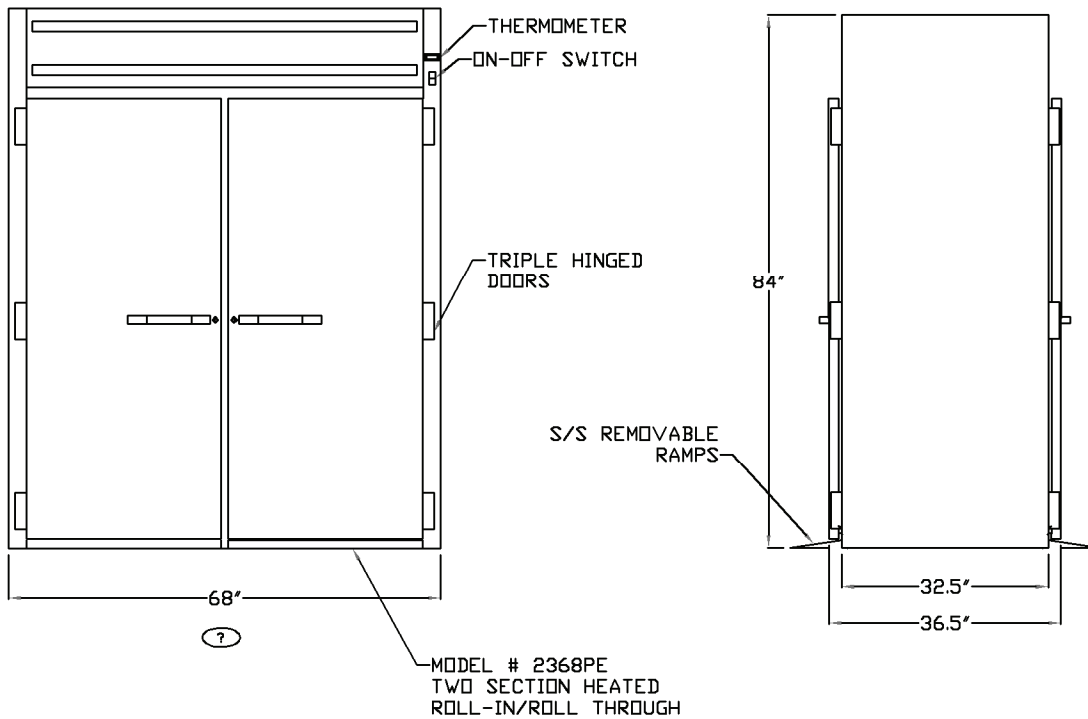
- Glass Doors

60°F to 180°F





LEGEND FOR MODEL # 2368PE	
J	JUNCTION BOX 208/230/60 7.0/8.1 1.47 Kw/1.95Kw
	8' LONG CORD SET (NEMA 6-20P)
	72 Cu/Ft STORAGE
UNIT $\#$	



NOTE:

Unit designed to accommodate one 66" high x 26" wide x 29" deep rack.
 Actual rack clearance dimensions: 66 1/2" high x 26 1/2" wide x 29 1/2" deep.
 Actual door opening dimensions: 67 1/2" high x 28 1/2" wide.

"E" Series Finish (Stainless Steel Door, Louver, Exterior Sides and Interior)

Model	Length	Depth	Height	Doors	Storage (Cu. Ft.)	KW	Volt	Amps	NEMA	Approx. Shipping Weight
2368PE	68"	36"	84"	4	72	1.47/1.95	208/230/60	7/8.1	6-15P	700

