

TL5 TABLETOP WRAP LABELING SYSTEM



LARGE DIAMETER WRAPAROUND LABELING

This semiautomatic, tabletop labeler is designed to apply pressure-sensitive labels to a wide range of cylindrical products from 2" (51mm) to 7 1/2" (190mm) in diameter.

The TL5 is ideal for many pharmaceutical, cosmetic and beverage applications, including wine bottles.

The compact, rugged aluminum plate construction accepts various label imprinters and coders for date, lot and bar coding.

EFFICIENT OPERATION

Products are manually loaded into the adjustable product fixture. A pneumatic cylinder raises the product to the rotating impression roller and the label is dispensed and wrapped around the product. The operator removes the labeled product and reloads the product fixture.

PROGRAMMABLE ELECTRONICS

The advanced programmable logic control features a soft-touch keypad. This provides product and label counts and allows the application of front and back labels on one product, when alternately converted on one web.



QUADREL
LABELING SYSTEMS

7670 Jenther Drive, Mentor, Ohio 44060
440-602-4700 Fax: 440-602-4701 E-Mail: labeling@quadrel.com

Packaging - Processing

Bid on Equipment

1-847-683-7720

www.bid-on-equipment.com

CAPABILITIES PROFILE

DESCRIPTION

Tabletop design accepts a wide variety of cylindrical products with minimal changeover time. Heavy-duty, aluminum-plate construction permits label imprinter and fault sensor integration. PLC based electronics enables the system to accommodate custom applications.

SPECIFICATIONS

Size: 21" (533mm) width x 30" (762mm) x 27" (686mm) height

Size: Approximate Net Shipping Weight: 56 lbs.

Actual Labeling Rate: Dependent upon label length and product diameter (up to 30 products per minute)

Accuracy: Up to to +/-1/32" (1mm) @sigma 2

Dispensing Speed: 310" (7.8m) per minute

Label Dimensions:

Maximum width = 7" (178mm)

Maximum length = 23" (585mm)

Minimum width 1/2" (13mm)

Minimum length = 1/2" (13mm)

Roll Capacity: 12" (304mm) O.D. on 3" (76mm) I.D. core

Web Width: 7" (178mm)

Label Format: Die cut, waste removed (minimum 1/8" [3mm] between labels)

Label Sensing: Photoelectric

Product Dimensions:

Maximum O.D. = 7" (178mm)

Minimum O.D. = 2" (51mm)

Utilities: 115v AC, 50/60Hz, 60PSI @ 2cfm

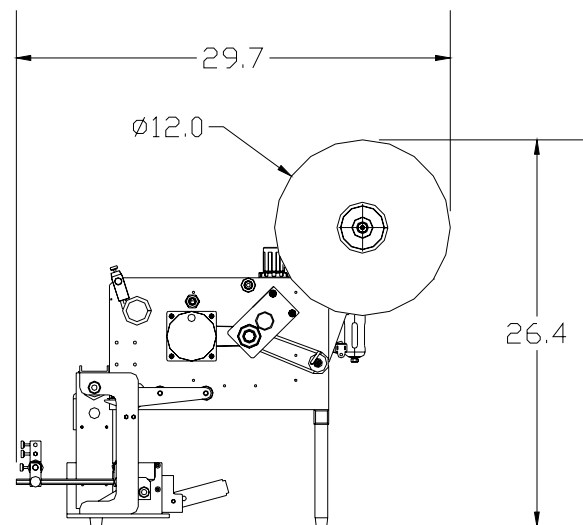
OPTIONS*

Recommended spare parts kit

Hot stamp imprinters

Missing label detection

Loose loop thermal transfer printers



QUADREL
LABELING SYSTEMS

7670 Jenther Drive, Mentor, Ohio 44060

440-602-4700 Fax: 440-602-4701 E-Mail: labeling@quadrel.com

Packaging - Processing

Bid on Equipment

1-847-683-7720

www.bid-on-equipment.com