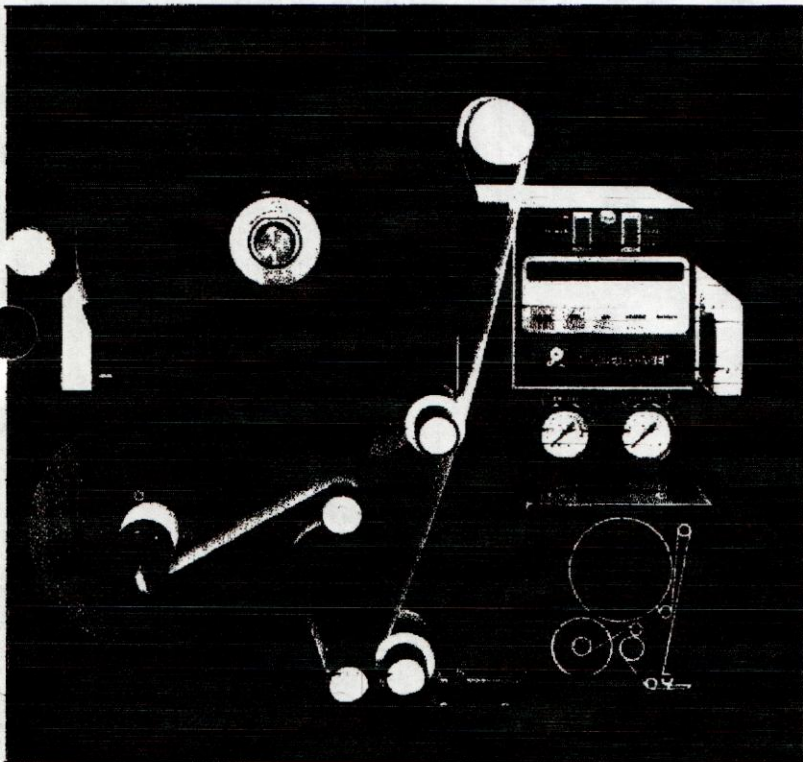


## High speed pressure-sensitive labeling that's both rugged and reliable.



■ High speed label application of up to 1600 linear inches of label web per minute is combined with an exceptional placement accuracy of  $\pm 1/32''$  in the Label-Aire 2111 with its unique air blown method of application.

■ Products may be labeled in any attitude (top, side or bottom) through this highly-efficient non-contact application method.

■ Labeling errors such as double labeling or a missed product are eliminated with peef tip sensing which further assures accurate placement of a label on every product.

■ Consistently reliable operation is insured by microprocessor controls which allow repeatable settings and constant monitoring.

■ The 2111 will accept a wide variety of label sizes without requiring change parts as a result of the system's advanced honeycomb grid.

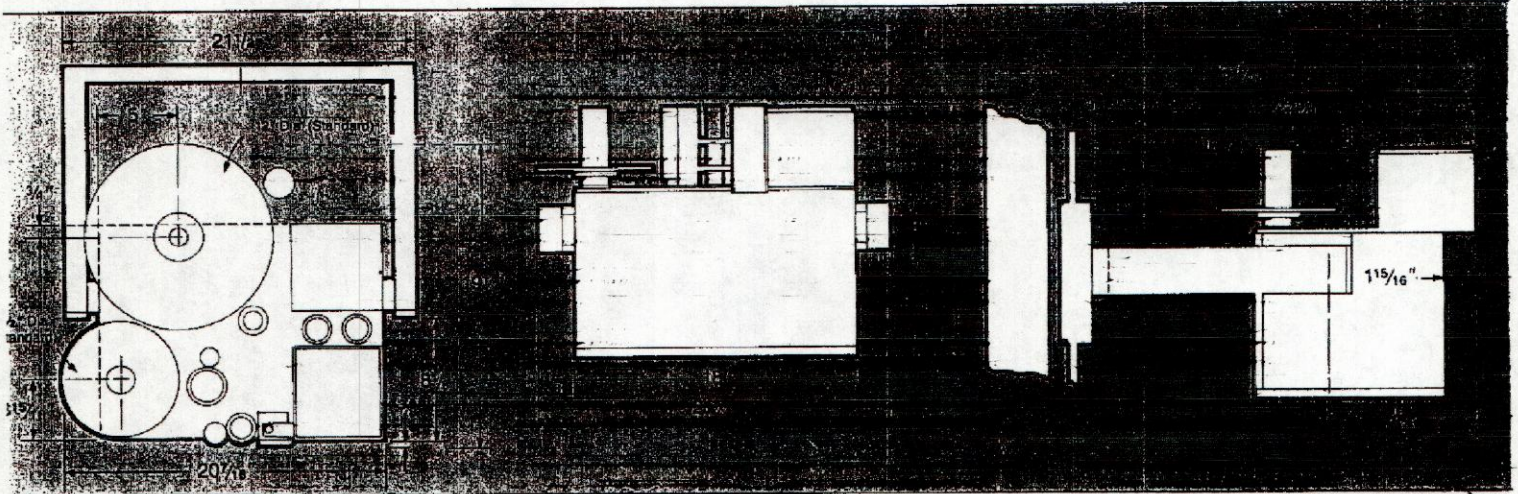
■ For fast cleaning and replacement, the "pop-off" guide rollers are easily removed from the 2111 assembly.

■ The 2111 is movable from one production line to another when mounted on Label-Aire's castered T-base stand.

■ The 2111's rugged corrosion-resistant, stainless steel and anodized aluminum housing provide durability and maintenance-free operation even in hostile environments.

■ Since 1961, Label-Aire has maintained a reputation for engineering and manufacturing leadership. This unrivaled performance is supported by convenient service centers throughout North America.

# STANDARD MOBILE LABEL APPLICATOR MODEL 2111



**Length:**

1'-11"

**Overall Width:**

1'-9"

**Electrical:**

115 volts AC, 60 cycle, 5 amps.  
Overload protection built-in  
(220 volts AC, 50 cycle optional).

**Electronics:**

Self prompting microprocessor  
controls.  
C-MOS circuitry (optional)

**Power Supply:**

Completely solid state, located in a  
pull-out modular drawer.

**Air Requirements:**

2 cfm at 60 psi to 90 psi for most  
applications.

**Product Sensing:** Photoelectric.

**Label Roll Size:\***

12" maximum O.D., wound on  
3" I.D. core.

**Label Styling Requirements:**

Die-cut, waste removed, with  
minimum of 1/8" separation be-  
tween labels in running direction.

**Overall Height:**

1'-8"

**Weight:**

110 lbs.

**Label Placement Accuracy:**

Label placement can be held to  
 $\pm 1/32"$  when labels are produced  
to specifications and product  
handling is controlled.

**Standard Label Sizes:\***

Maximum 4" x 5-1/2"  
Minimum 3/4" x 3/4"

**Labeling Speed:**

Up to 1500 linear inches of label  
web per minute.

**Options:**

Powered unwind	Stepper drives
Hot stamps	Web break alarm
Snorkels	Label counter
Low label alarm	UL Approved (only certain models)

\*Other sizes available.

Manufactured in the U.S.A.

Protected by one or more U.S. and foreign patents.

MODEL 2111

**LABEL-AIRE**

**OLC, INC.**

557 PROFESSIONAL BLDG BOX 118

WARRAND, VA

37-387-1200 FAX 37-387-1211

PRESSURE SENSITIVE LABELING SUPPLIES