



800-523-3654

BALER & COMPACTOR

www.ptrco.com

Stationary Compactors



TP-4000HD

**Tram-Pak
 Stationary Compactor**

Designed For

- * Retailers * Hospitals * Hotels * Distribution Centers *
- * Manufacturing Centers * Recycling Centers * Home Centers *

When the TP-4000HD Series was designed, we challenged our engineers to see how long the machines could hold up in the field. We are pleased to say those machines originally built in the early 70's are still performing. All components are built using heavy-duty structural steel components and welded by AWS certified technicians. This unit has standard 3 button controls (On/Off key switch, mushroom stop, auto reverse) and a 13' Sealtite.

Specifications

Charge Box Capacity 4 Cu Yd
 Clear Top Opening (L x W) 68" x 60"
 Capacity Per Hour 58.7 cy/hr

Performance Characteristics

Cycle Time 64 sec
 Total Normal Force 62,200 lbs
 Total Maximum Force 79,200 lbs
 Normal Ram Face Pressure 30.5 psi
 Maximum Ram Face Pressure 38.8 psi

Electrical Equipment

Electrical Motor 208 / 230 / 460 3 Phase
 Electrical Control Voltage 120 VAC
 Motor HP 20

Hydraulic Equipment

Hydraulic Pump Capacity 15 gpm
 Normal Pressure 2200 psi
 Maximum Pressure 2800 psi
 Hydraulic Cylinder 6" Bore
 Hydraulic Cylinder 4" Rod
 Weight 8,500 lbs

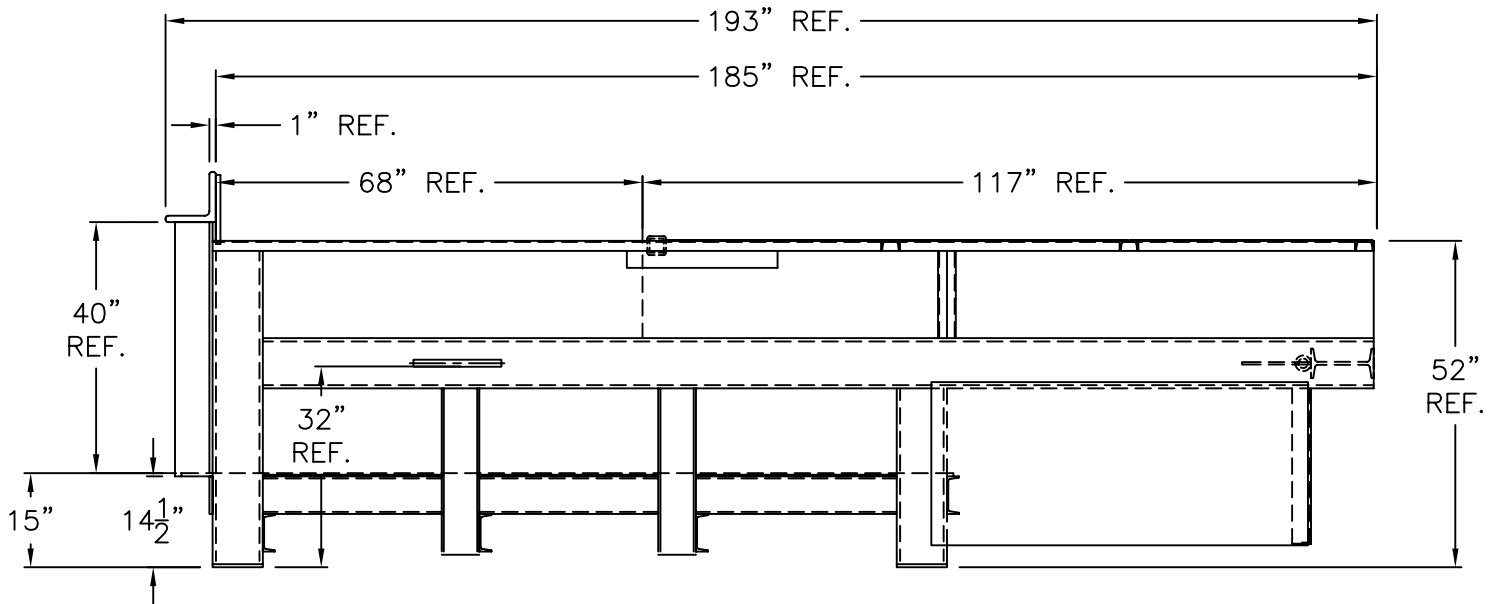
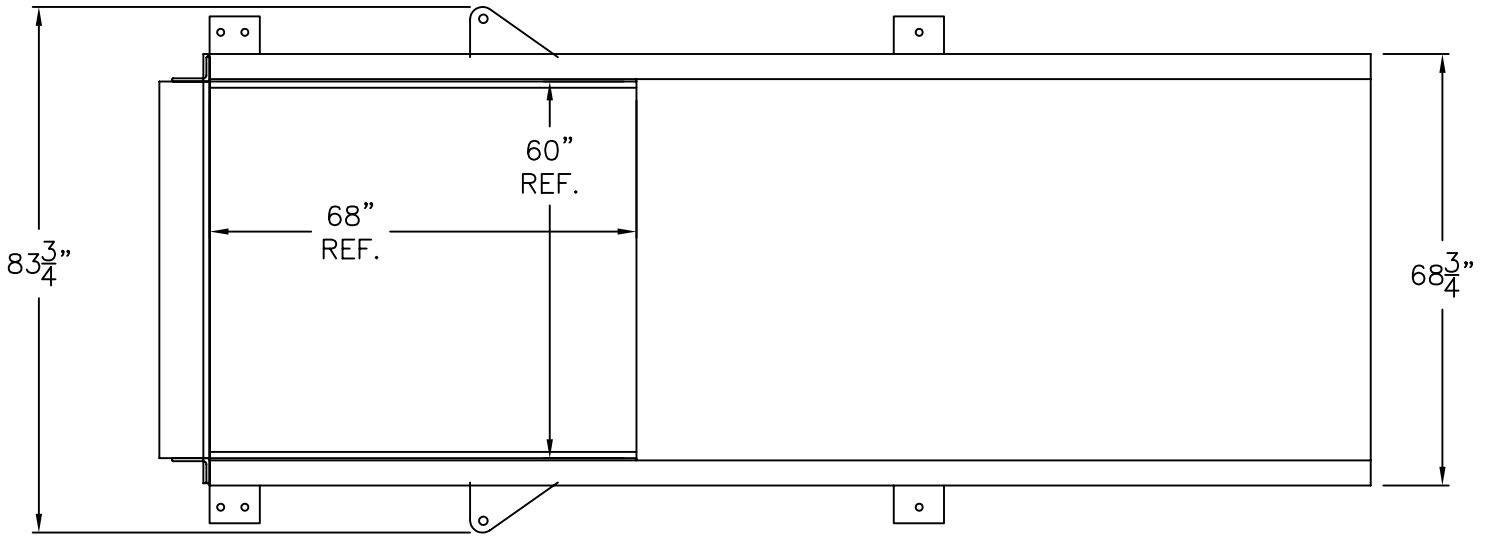


PTR Baler & Compactor Company • 2207 E Ontario St. • Philadelphia, PA 19134
 215-533-5100 • (FAX) 215-533-8906 • 800-523-3654 • www.PTRCO.com



Printed in the U.S.A.
 © PTR Baler & Compactor

PTR BALER & COMPACTOR



STANDARD COLOR: DARK BROWN 13-938

TITLE: TP-4000HD WITH 8' X 10' DRIVE ON ENCLOSURE
DWG. NO: AC4024041

PTR BALER & COMPACTOR

