



800-523-3654

# BALER & COMPACTOR

www.ptrco.com

## Stationary Compactors



# TP-3000SP

**Tram-Pak  
 Stationary Compactor**

**Designed For**

- \* Retailers \* Hospitals \* Hotels \* Distribution Centers \*
- \* Manufacturing Centers \* Recycling Centers \* Home Centers \*

Our TP-3000SP (Short Profile) compactor was our response to customers battling space constrictions and those who could not accommodate a long chute. We managed to construct a twin cylinder machine with high compaction forces and an overall length of 145 inches. All components are built using heavy-duty structural steel components and welded by AWS certified technicians. This unit has total U.L. approval, standard 3 button controls (On/Off key switch, mushroom stop, auto reverse) and a 13' Sealite.

### Specifications

Charge Box Capacity	3 Cu Yd
Clear Top Opening (L x W)	68" x 60"
Capacity Per Hour	158 cy/hr

### Electrical Equipment

Electrical Motor 208 / 230 / 460	3 Phase
Electrical Control Voltage	120 VAC

### Performance Characteristics

Cycle Time	60 sec
Total Normal Force	64,000 lbs
Total Maximum Force	76,000 lbs
Normal Ram Face Pressure	35.7 psi
Maximum Ram Face Pressure	42.4 psi

### Hydraulic Equipment

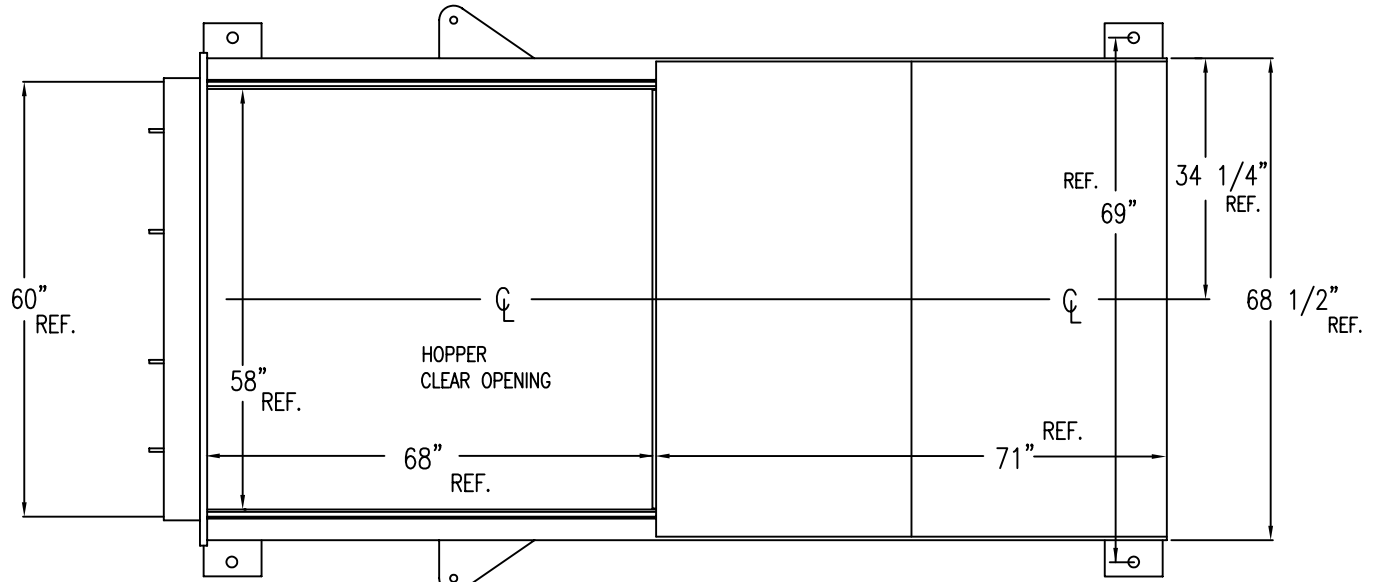
Hydraulic Pump Capacity	15 gpm
Normal Pressure	2150 psi
Maximum Pressure	2550 psi
Hydraulic Cylinder	(2) 4.5" Bore
Hydraulic Cylinder	3" Rod
Weight	6,000 lbs



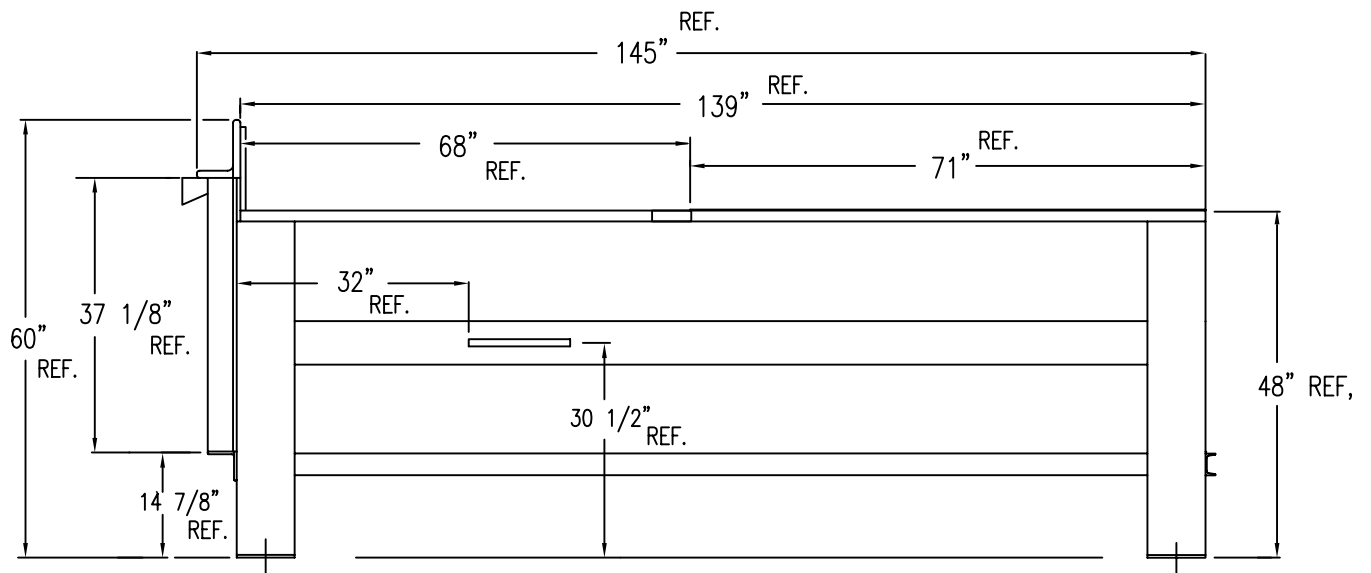
PTR Baler & Compactor Company • 2207 E Ontario St. • Philadelphia, PA 19134  
 215-533-5100 • (FAX) 215-533-8906 • 800-523-3654 • www.PTRCO.com



# PTR BALER & COMPACTOR



TOP VIEW



SIDE VIEW

# PTR BALER & COMPACTOR

