



BALER & COMPACTOR

www.ptrco.com

Self-Contained Compactors



PT-301L

(30 Cubic Yards)

The PT-301L Compactor has been engineered and manufactured to provide many years of reliable service. The heavy-duty structural steel components are welded by AWS certified technicians and water tested to ensure leak proof containment under high compaction forces. This unit has standard 3 button controls, On/Off key switch, mushroom stop, auto reverse and a *Sure-Tite*™ door seal.

Specifications

Charge Box Capacity	1.5 Cu Yd
Container Capacity	30 Cu Yd
Clear Top Opening (L x W)	36" x 60"

Electrical Equipment

Electrical Motor 208/230/460v	3 Phase
Horse Power	10
Electrical Control Voltage	120 VAC

Performance Characteristics

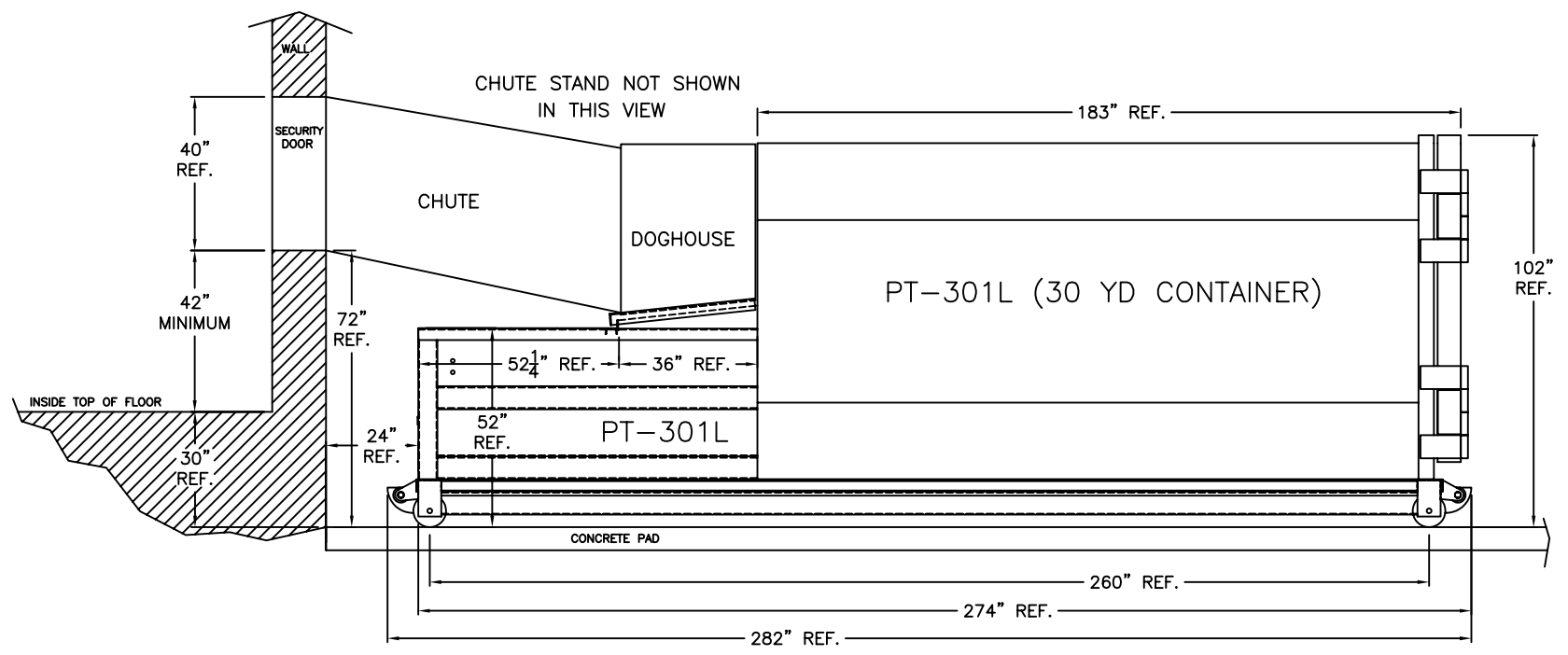
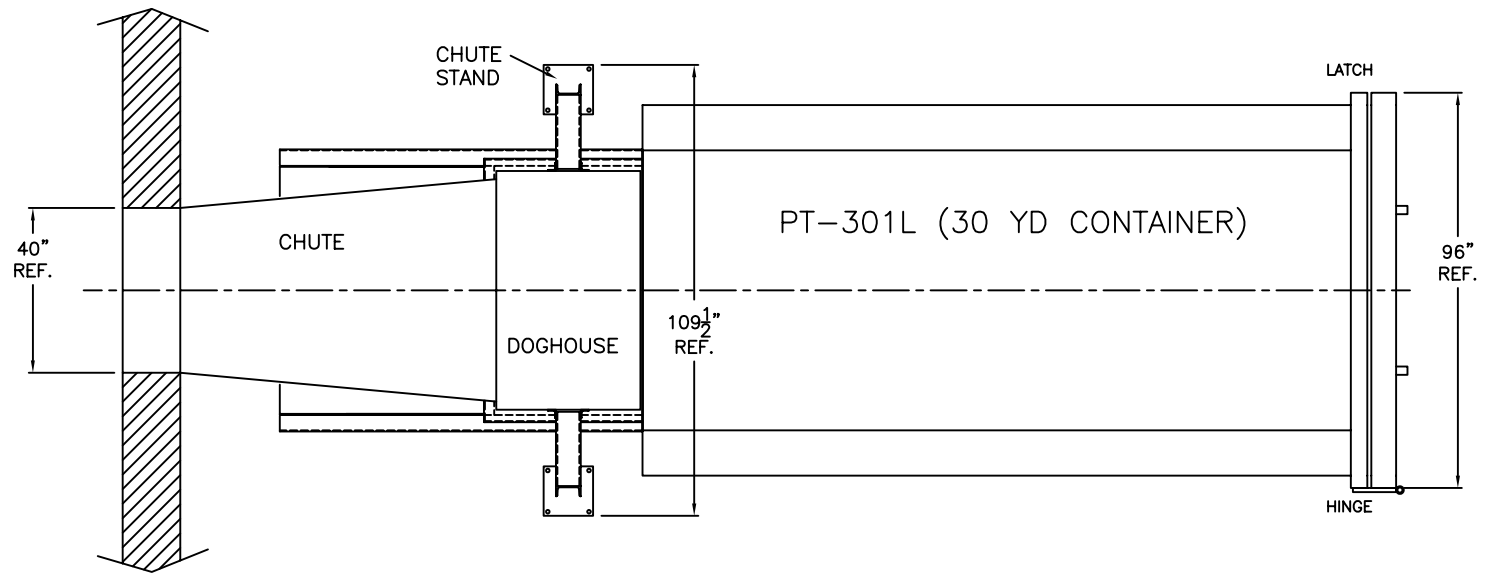
Cycle Time	33 sec
Total Normal Force	39,265 lbs
Total Maximum Force	47,000 lbs
Normal Ram Face Pressure	21.8 psi
Maximum Ram Face Pressure	26.2 psi

Hydraulic Equipment

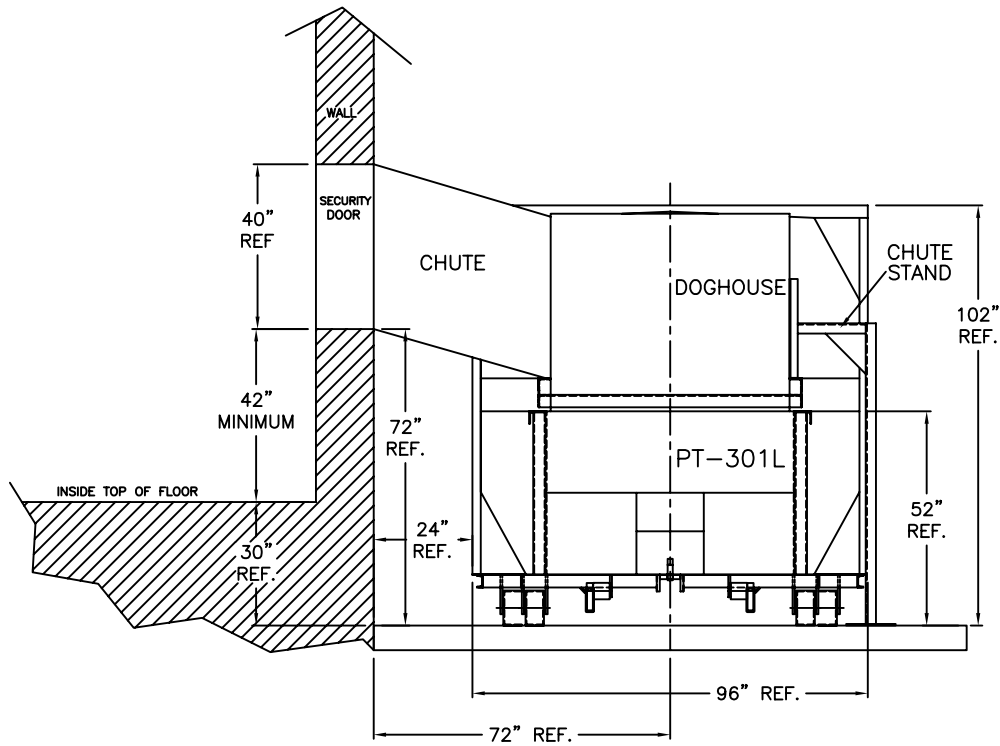
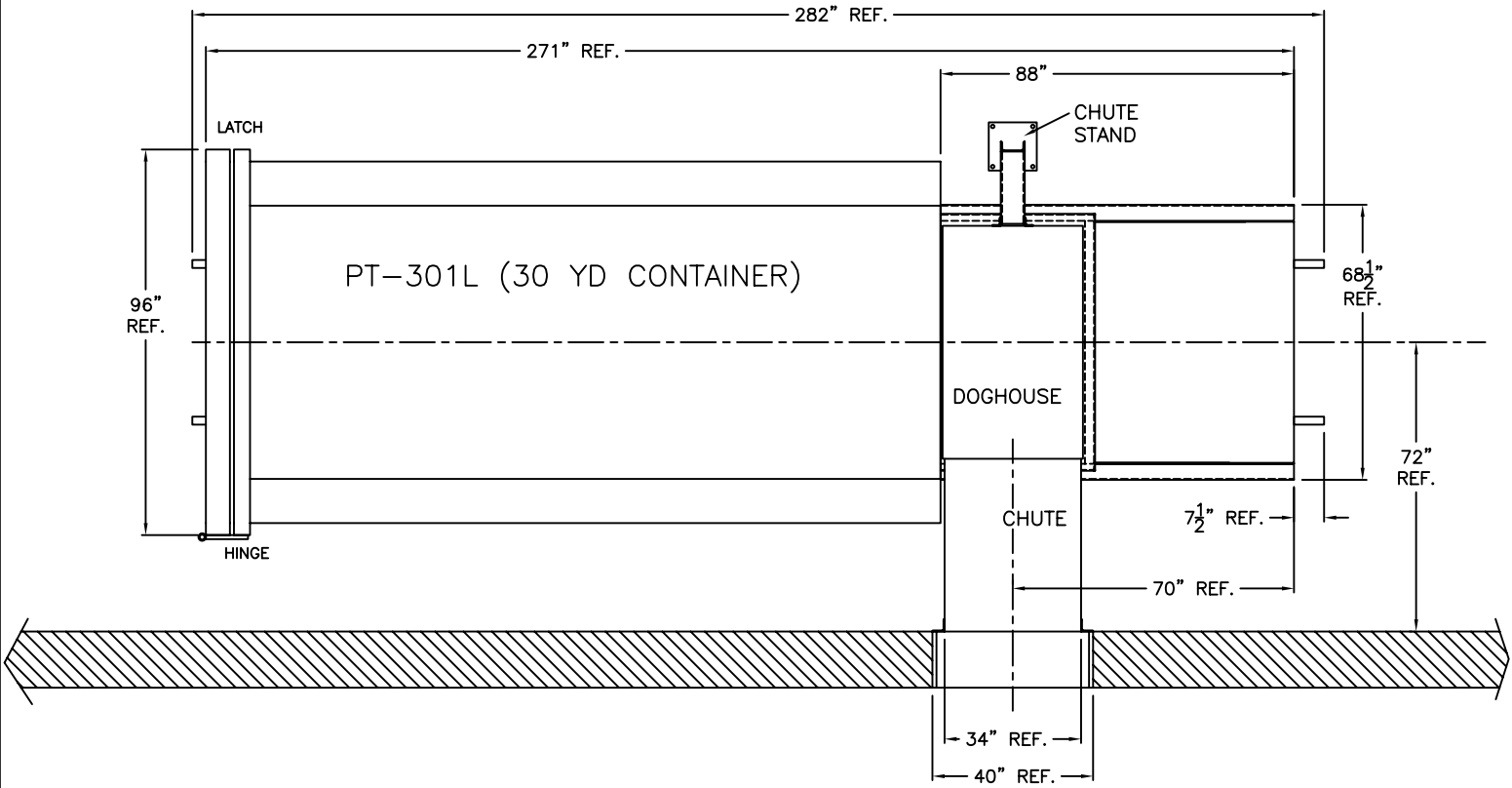
Hydraulic Pump Capacity	10.5 gpm
Normal Pressure	2000 psi
Maximum Pressure	2400 psi
Hydraulic Cylinder (2) Bore	5"
Hydraulic Cylinder Rod	3"

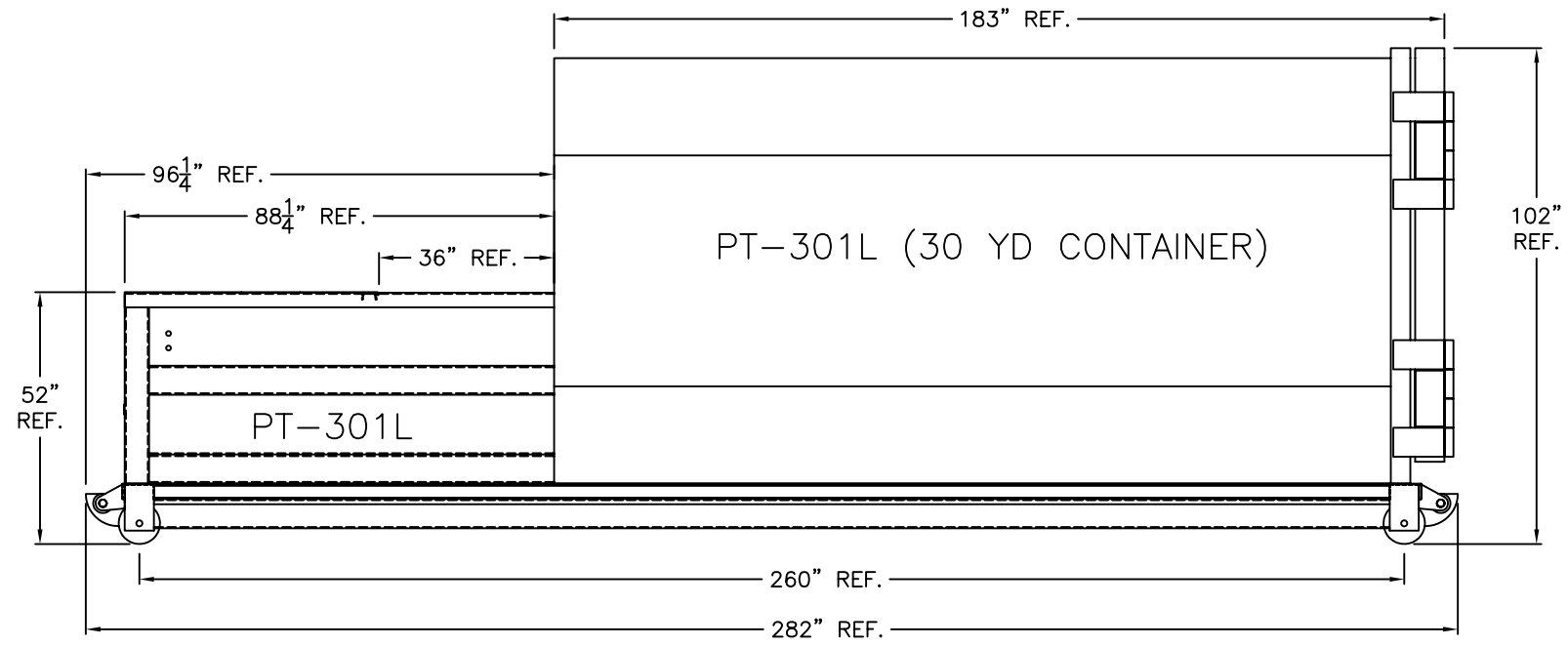
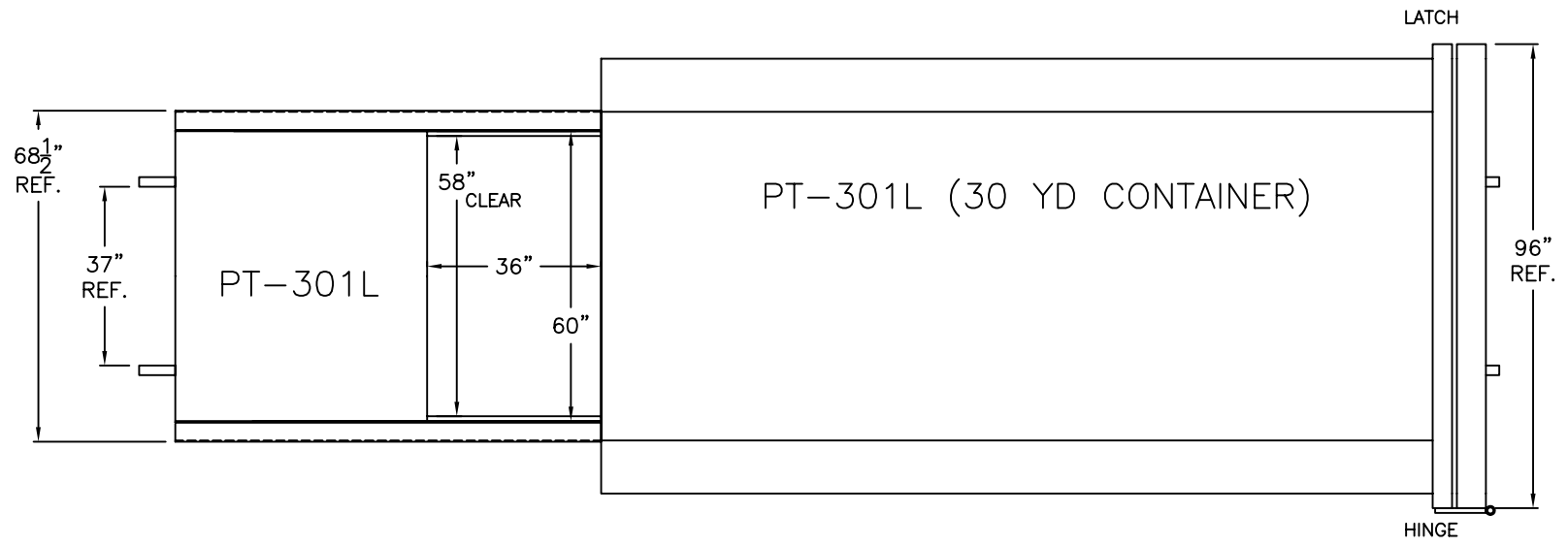


TITLE: PT-301L REAR FEED EXAMPLE
 DWG. NO: AC402448



PTR BALER & COMPACTOR





TITLE: PT-301L BASE UNIT WITHOUT OPTIONS
DWG. NO: AC402447