

**PTR**

800-523-3654

**BALER & COMPACTOR**

[www.ptrco.com](http://www.ptrco.com)

# Vertical Balers



**460**

**Vertical Downstroke Baler**

**Designed For:**

**\* Supermarkets \* Retail Chains \* Hospitals \* Hotels \* Malls \***

**This small but powerful machine has been specifically engineered for applications with limited space or budget. The 460 Series has all of the important safety features that make us the leader in the vertical baler industry.**

**Dimensional Data**

Overall (Width x Depth x Height)	60 3/4" x 32 5/8" x 95 3/4"
Feed Height	46"
Baler Chamber (Depth x Height)	24" x 28"
Load Opening (Width x Height)	46" x 19"

**Bale Size**

Bale Width	46"
Bale Depth	24"
Bale Height	30"
Bale Weight	300 to 500 lbs

**Performance Characteristics**

Cylinder Bore	4" x 2.5"
Rod Stroke	32"
Motor	3 hp
Cycle Time	53 sec
Systems Pressure	2450 – 2750 psi
Platen Force	30,788 lbs
Control Voltage	110 – 120 VAC
Electrical Motor	3 Phase
	208 / 230 / 460

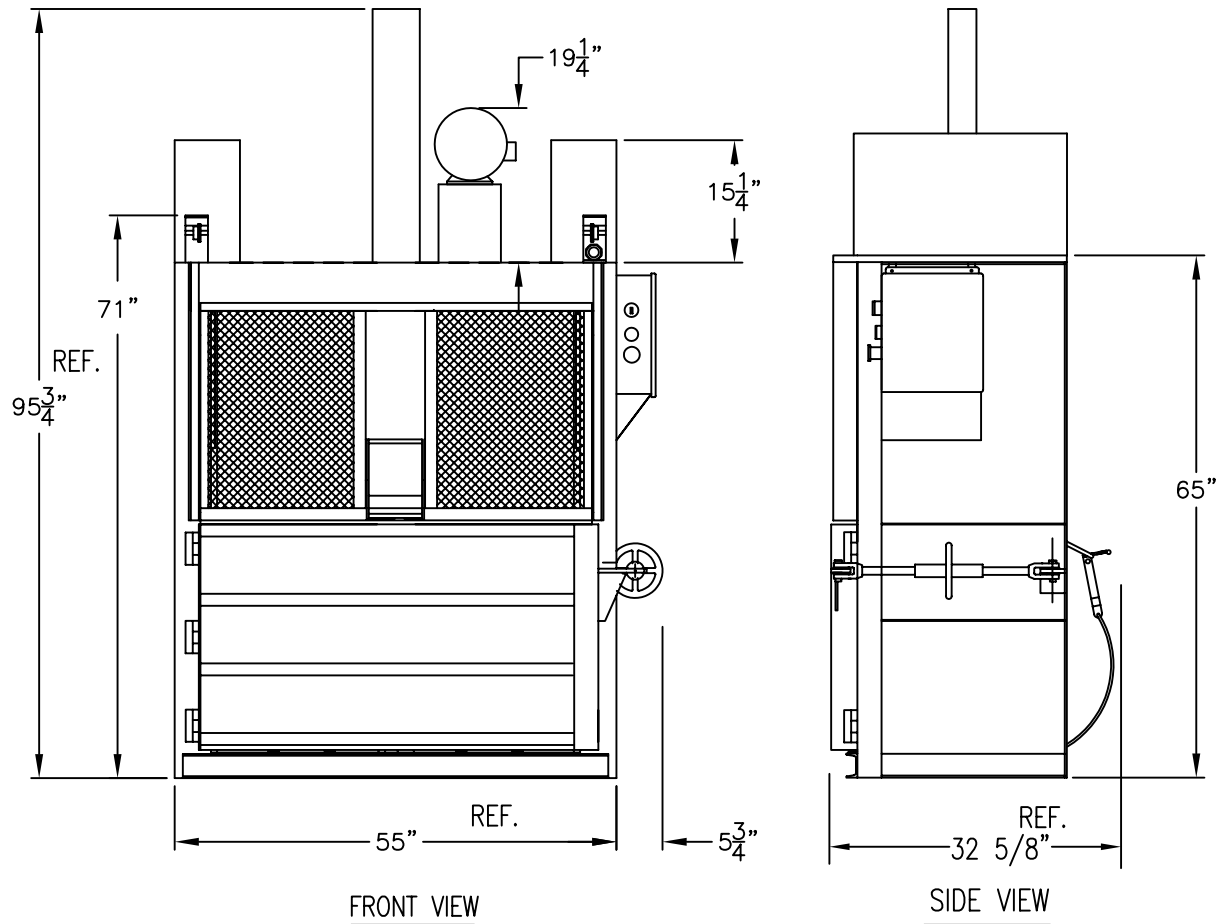


PTR Baler & Compactor Company • 2207 E Ontario St. • Philadelphia, PA 19134  
 215-533-5100 • (FAX) 215-533-8906 • 800-523-3654 • [www.PTRCO.com](http://www.PTRCO.com)



Printed in the U.S.A.  
 © PTR Baler & Compactor

# PTR BALER & COMPACTOR



## SPECIFICATIONS

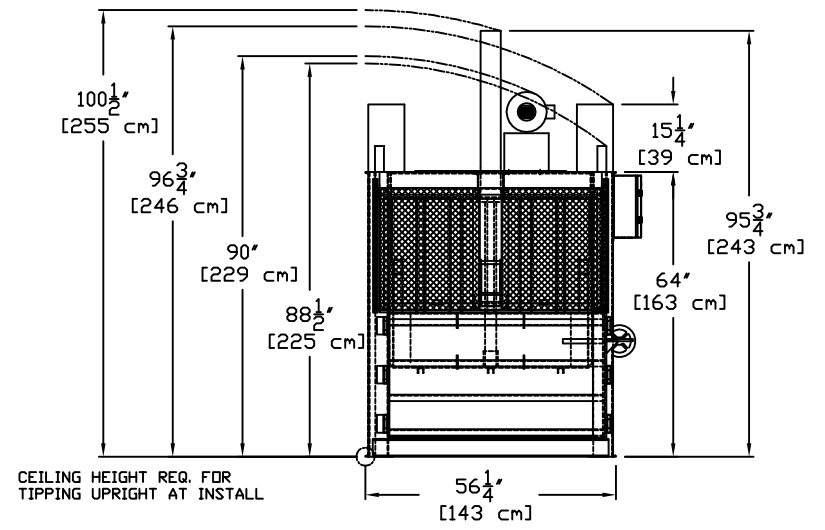
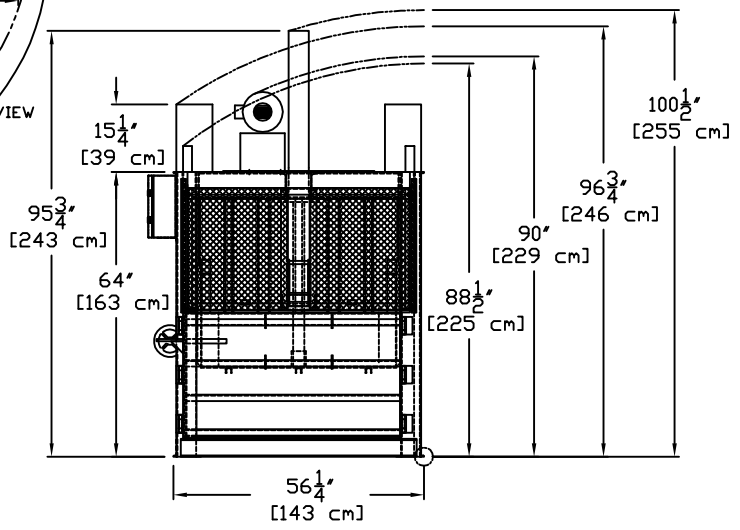
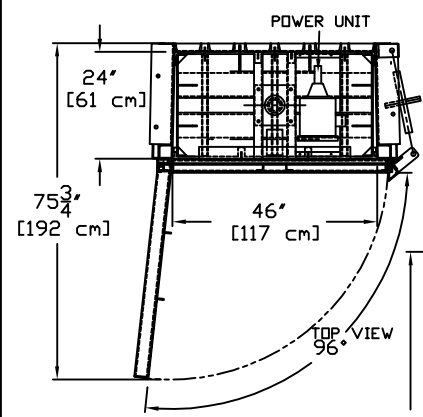
BALE WEIGHT	_____	300 - 500 LBS
BALE SIZE	_____	46" WIDE X 24" DEEP X 30" TALL
FEED OPENING	_____	46" X 19"
PLATEN FORCE		
WORKING	_____	30,788 LBS
RELIEF	_____	34,558 LBS
SYSTEM PRESSURE		
WORKING	_____	2,450 PSI
RELIEF	_____	2,750 PSI
AVERAGE CYCLE TIME	_____	53 SEC.
CYLINDER BORE	_____	4"
CYLINDER STROKE	_____	32"
CYLINDER ROD	_____	2 1/2"
MOTOR	_____	3 HP ( 208/230/460V-3 PHASE )
PUMP	_____	3.2 GPM
SHIP WEIGHT	_____	1950 LBS

TITLE:

460 BALER

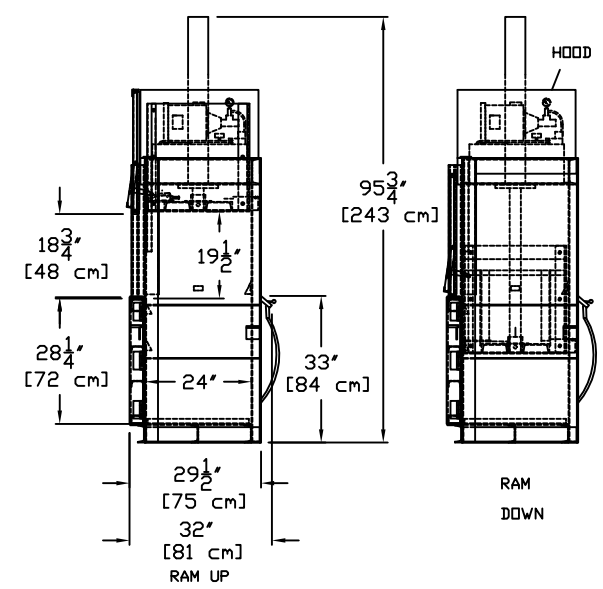
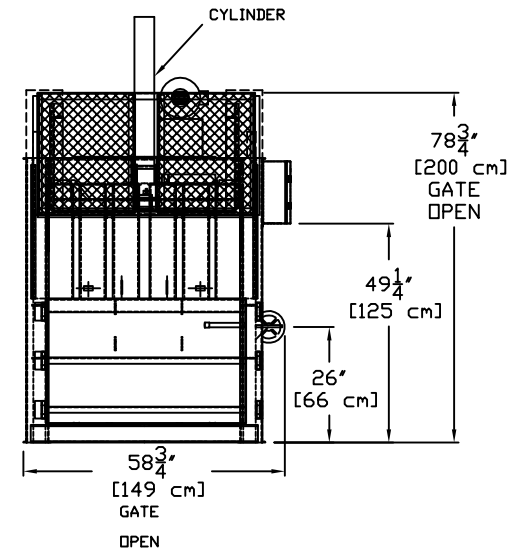
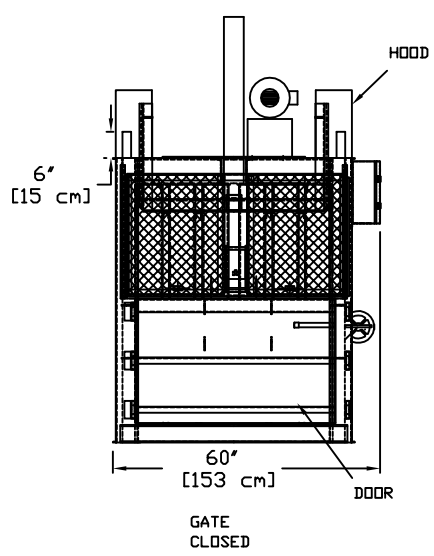
DWG. NO: AB404614

PTR BALER & COMPACTOR



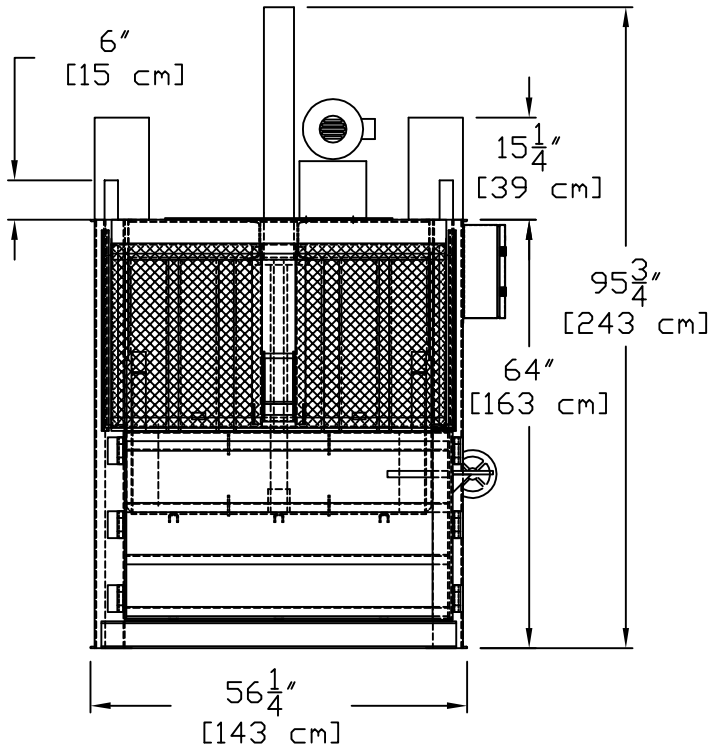
ALL DIMENSION ARE FOR REFERENCE ONLY,  
 ACTUAL DIMENSION MAY VARY.

ALL DIMENSION ARE FOR REFERENCE ONLY,  
 ACTUAL DIMENSION MAY VARY,  
 SH1 1 OF 2

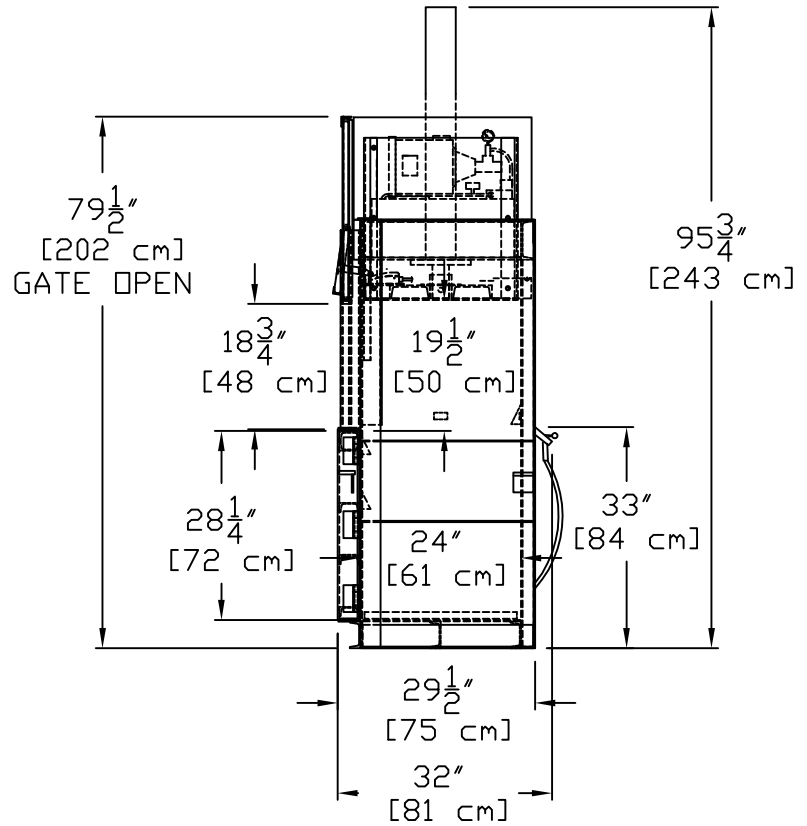


BP 10-11-10

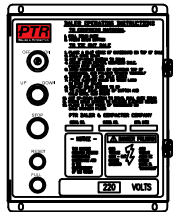
# PTR BALER & COMPACTOR



FRONT VIEW



SIDE VIEW  
 RAM UP



CONTROL BOX  
 SCALE = 2X

ALL DIMENSION AND SPECIFICATIONS ARE FOR REFERENCE ONLY, ACTUAL DIMENSIONS AND PERFORMANCE CHARACTERISTICS MAY VARY.

## SPECIFICATIONS

BALE WEIGHT	_____	350 - 500 LBS	[160 - 225 Kg]
BALE SIZE	_____	46" WIDE X 24" DEEP X 30" TALL	[117 X 61 X 76 cm]
FEED OPENING	_____	46" X 18 3/4"	[117 X 48 cm]
PLATEN FORCE			
WORKING	_____	30,780 LBS	[136,900 N]
RELIEF	_____	34,500 LBS	[153,700 N]
SYSTEM PRESSURE			
WORKING	_____	2,450 PSI	[16,900 KPa]
RELIEF	_____	2,750 PSI	[19,000 KPa]
RAM PRESSURE			
NOM	_____	28.2 PSI	[194 KPa]
MAX	_____	31.6 PSI	[218 KPa]
AVERAGE CYCLE TIME	_____	53 SEC.	
CYLINDER BORE	_____	4"	[10 cm]
CYLINDER STROKE	_____	32"	[81 cm]
CYLINDER ROD	_____	2 1/2"	[6 cm]
MOTOR	_____	3 HP ( 208/230/460V-3 PHASE )	[2.2 Kw]
PUMP	_____	3.2 GPM	[12.1 L/m]
SHIP WEIGHT	_____	1,950 LBS	[885 Kg]

BP 10-11-10  
 SHT 2 OF 2