

PTR

800-523-3654

BALER & COMPACTOR

www.ptrco.com

Vertical Balers



420

Vertical Downstroke Baler

Designed For:

*** Supermarkets * Retail Chains * Hospitals * Hotels * Malls ***

This small but powerful machine has been specifically engineered for applications with limited space or budget. The 420 Series has all of the important safety features that make us the leader in the vertical baler industry.

Dimensional Data

Overall (Width x Depth x Height)	52 7/16" x 29 1/4" x 96"
Feed Height	21"
Baler Chamber (Depth x Height)	24" x 28"
Load Opening (Width x Height)	30" x 19"

Bale Size

Bale Width	42"
Bale Depth	22"
Bale Height	30"
Bale Weight	50 to 200 lbs

Performance Characteristics

Cylinder Bore	3" x 1.75"
Rod Stroke	32"
Motor	3 hp
Cycle Time	30 sec
Systems Pressure	1600 – 2100 psi
Platen Force	11,300 lbs
Control Voltage	110 – 120 VAC
Electrical Motor	3 Phase
	208 / 230 / 460



PTR Baler & Compactor Company • 2207 E Ontario St. • Philadelphia, PA 19134
 215-533-5100 • (FAX) 215-533-8906 • 800-523-3654 • www.PTRCO.com



Printed in the U.S.A.
 © PTR Baler & Compactor

420

42" VERTICAL BALER SPECIFICATIONS

A. Manufactured

1. To meet American National Standard Institute Specifications, Z245.5 - 1997
2. Total UL approval on entire baler including all electrical, mechanical & hydraulic components.

B. Capacity

1. Bale weights of 50-200 lbs.

C. Frame

- | | |
|-----------------------|-----------------|
| 1. Bale Chamber of | 42" x 22" x 30" |
| 2. Frame width of | 53" max. |
| 3. Frame depth of | 30" max. |
| 4. Frame height of | 74" max. |
| 5. Over all height of | 96" max. |

D. Ram

1. A 1/4" thick steel plate of trapezoid shape.
2. Ram sides of one piece formed plate for proper force distribution.
3. Ram guided on sides to maximize direction of hydraulic forces.
4. Weld construction utilizing the outershield welding procedure; providing 92,000 PSI weld tensile strength.

E. Cylinder

1. Single stage hydraulic 3" Bore x 32" Stroke x 1 3/4" Rod Cylinder with a 3/4" thick mounting flange on rod end.
2. The cylinder is connected to the platen in a manner that eliminates the compression force acting on the connecting pin during the compression cycle.
3. High density machined steel cylinder cup

F. Power Unit

1. Will be the tri-voltage three phase or optional single voltage, single phase.
2. Will be 3HP heavy duty rated and capable of producing a ram force of 11,300 lbs.

G. Charging Gate

1. Gate is counter balanced with weights through a link chain and sprocket system.
2. Gate is manual, safety, pull down type with manual or automatic lifting capability, moving on replaceable nylon wear guides.

H. Bale Chamber Door

1. Door structure and hinge capable of withstanding the forces generated by the power unit during the Baling Cycle.
2. Door Lock System will engage and disengage by a 8" cast steel hand wheel assembly, capable of safely holding the door in a locked position and allowing a slow diminishing of forces against the door when opening.

I. Semi-Automatic Bale Ejector System

1. Consist of heavy duty 1/4" anchor chain, attached to a T-hook on one end and to the baler frame on the other end.
2. T Hook is designed to automatically disengaged on the first down cycle of the ram in the automatic mode.

J. Control Panel

1. Will provide a manual and automatic mode of operation.
2. Will have a key operated power On/Off switch, and Up-Down/Start combination switch, and an Emergency Stop button.

K. Automatic Safety Electrical Systems

1. A concealed electric magnetic field proximity switch to insure charging gate is closed and remains closed during travel of ram.
2. An activator ram switch to insure that the platen will stop if the gate is opened at any point in the baling cycle.
3. Chamber door switch to insure door is completely closed and locked while the baler is operating in the automatic mode.
4. Safety switch to insure a complete shut down when ram completes the full automatic cycle.

L. Finish

1. High quality industrial enamel paint.

M. Warranty

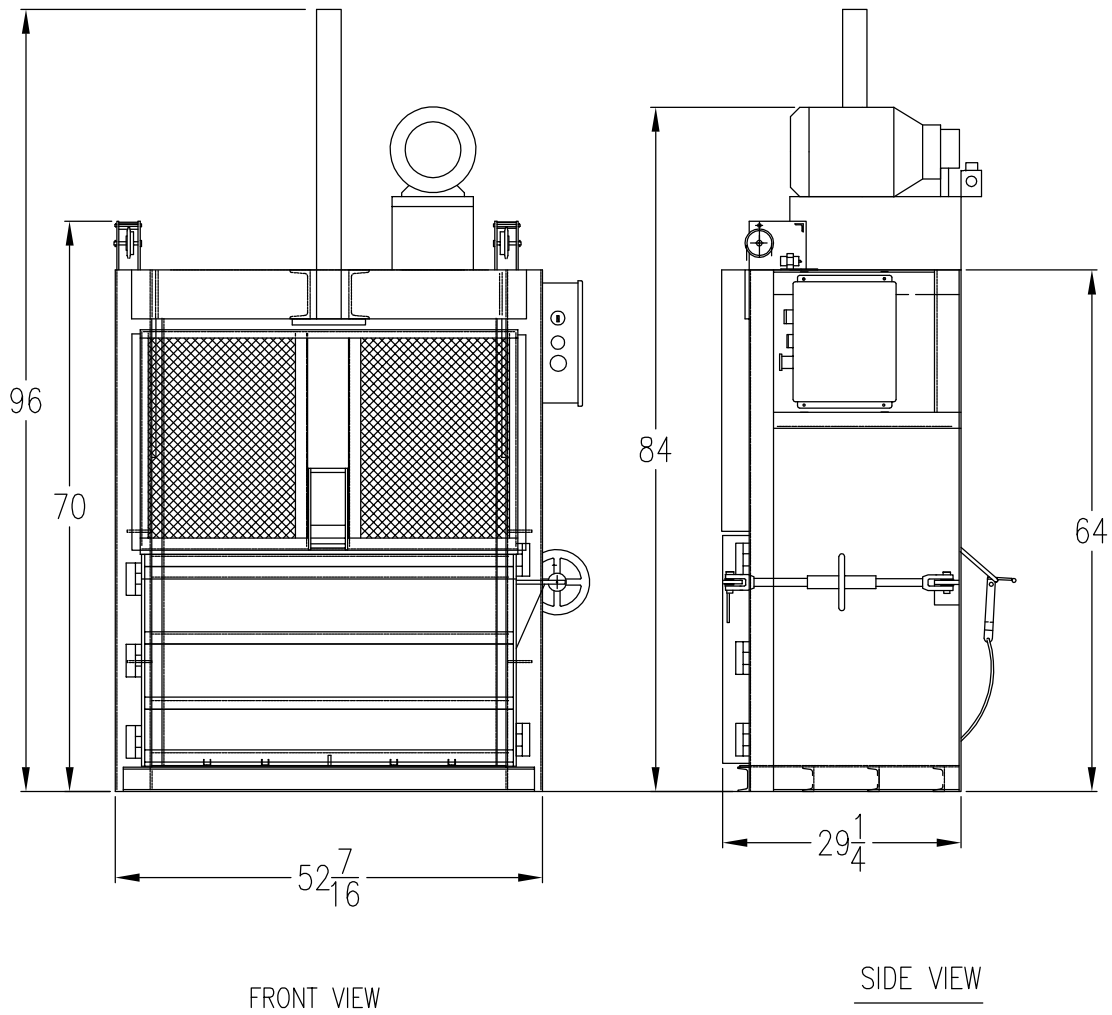
1. One full year on defective parts and replacement labor.

N. Service and Parts

1. Factory authorized Parts and Service Organization with 24 hour customer service hotline.

O. Special Safety Benefits

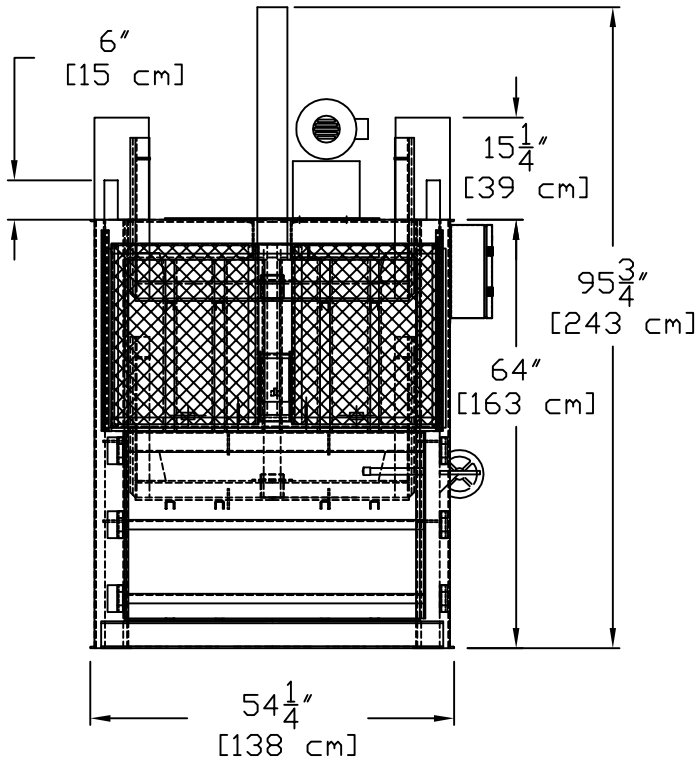
1. Safety/Operational Videotape provided with each baler.
2. \$10,000,000 Product Liability Insurance Coverage



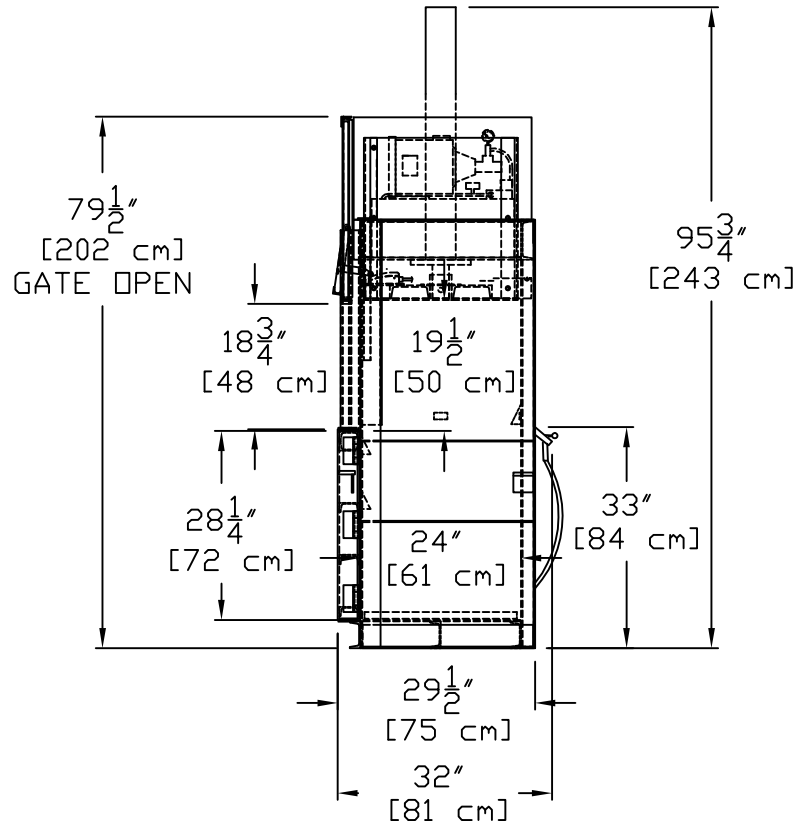
SPECIFICATIONS

BALE WEIGHT	_____	50-200
BALE SIZE	_____	42" X 22" X 30"
FEED OPENING	_____	21" X 42"
TOTAL CHAMBER VOLUME	_____	29 cu ft.
PLATEN AREA	_____	861 sq.in.
PLATEN PRESSURE		
WORKING	_____	11300 LBS
RELIEF	_____	14800 LBS
AVERAGE CYCLE TIME	_____	30 SEC
CYLINDER BORE	_____	3"
CYLINDER STROKE	_____	32"
CYLINDER ROD	_____	1 3/4"
MOTOR	_____	3 HP (208/230/460-3 PHASE)

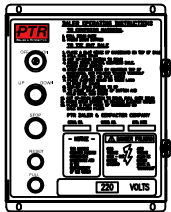
PTR BALER & COMPACTOR



FRONT VIEW



SIDE VIEW
RAM UP



CONTROL BOX
SCALE = 2X

ALL DIMENSION AND SPECIFICATIONS ARE FOR REFERENCE ONLY, ACTUAL DIMENSIONS AND PERFORMANCE CHARACTERISTICS MAY VARY.

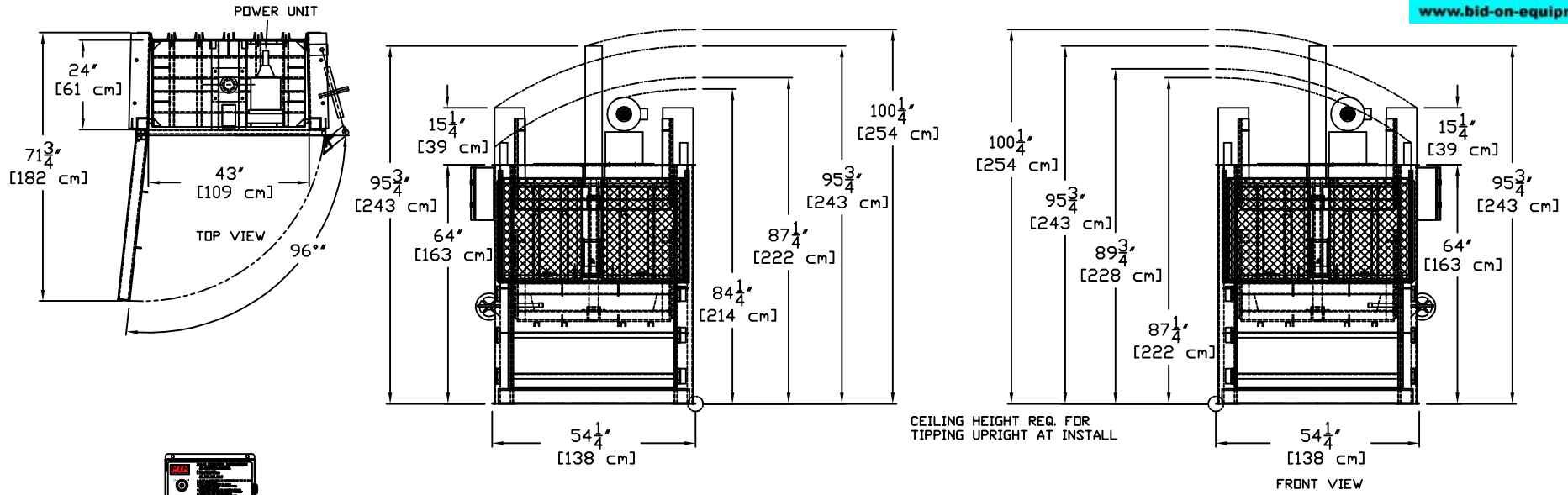
SPECIFICATIONS

BALE WEIGHT	_____	200 - 400 LBS	[90 - 180 Kg]
BALE SIZE	_____	42" WIDE X 24" DEEP X 30" TALL	[107 X 61 X 76 cm]
FEED OPENING	_____	42" X 18 3/4"	[107 X 48 cm]
PLATEN FORCE			
WORKING	_____	20,100 LBS	[89,400 N]
RELIEF	_____	26,400 LBS	[117,400 N]
SYSTEM PRESSURE			
WORKING	_____	1,600 PSI	[11,000 KPa]
RELIEF	_____	2,100 PSI	[14,500 KPa]
RAM PRESSURE			
NOM	_____	19.7 PSI	[136 KPa]
MAX	_____	25.9 PSI	[179 KPa]
AVERAGE CYCLE TIME	_____	53 SEC.	
CYLINDER BORE	_____	4"	[10 cm]
CYLINDER STROKE	_____	32"	[81 cm]
CYLINDER ROD	_____	2 1/2"	[6 cm]
MOTOR	_____	3 HP (208/230/460V-3 PHASE)	[2.2 Kw]
PUMP	_____	3.2 GPM	[12.1 L/m]
SHIP WEIGHT	_____	1440 LBS	[650 Kg]

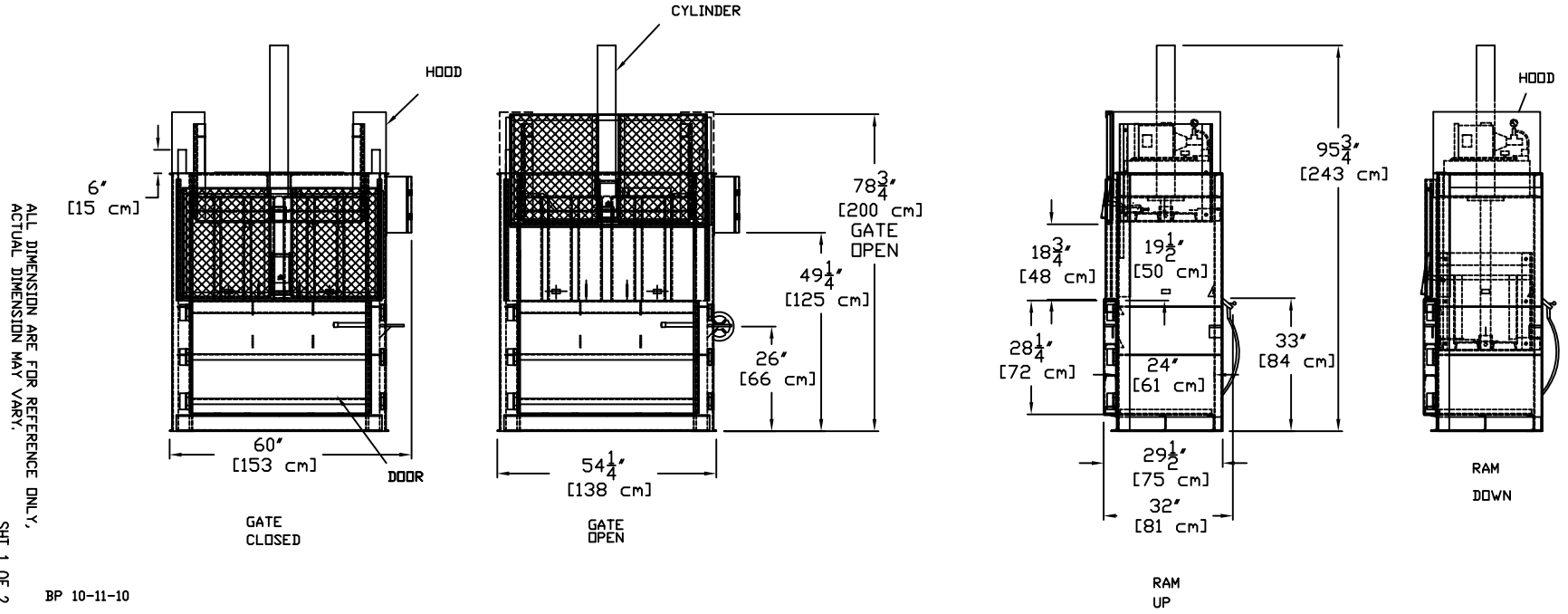
10/11/10
SHT 2 OF 2

TITLE: 420 BALER
 DWG. NO: AB404615

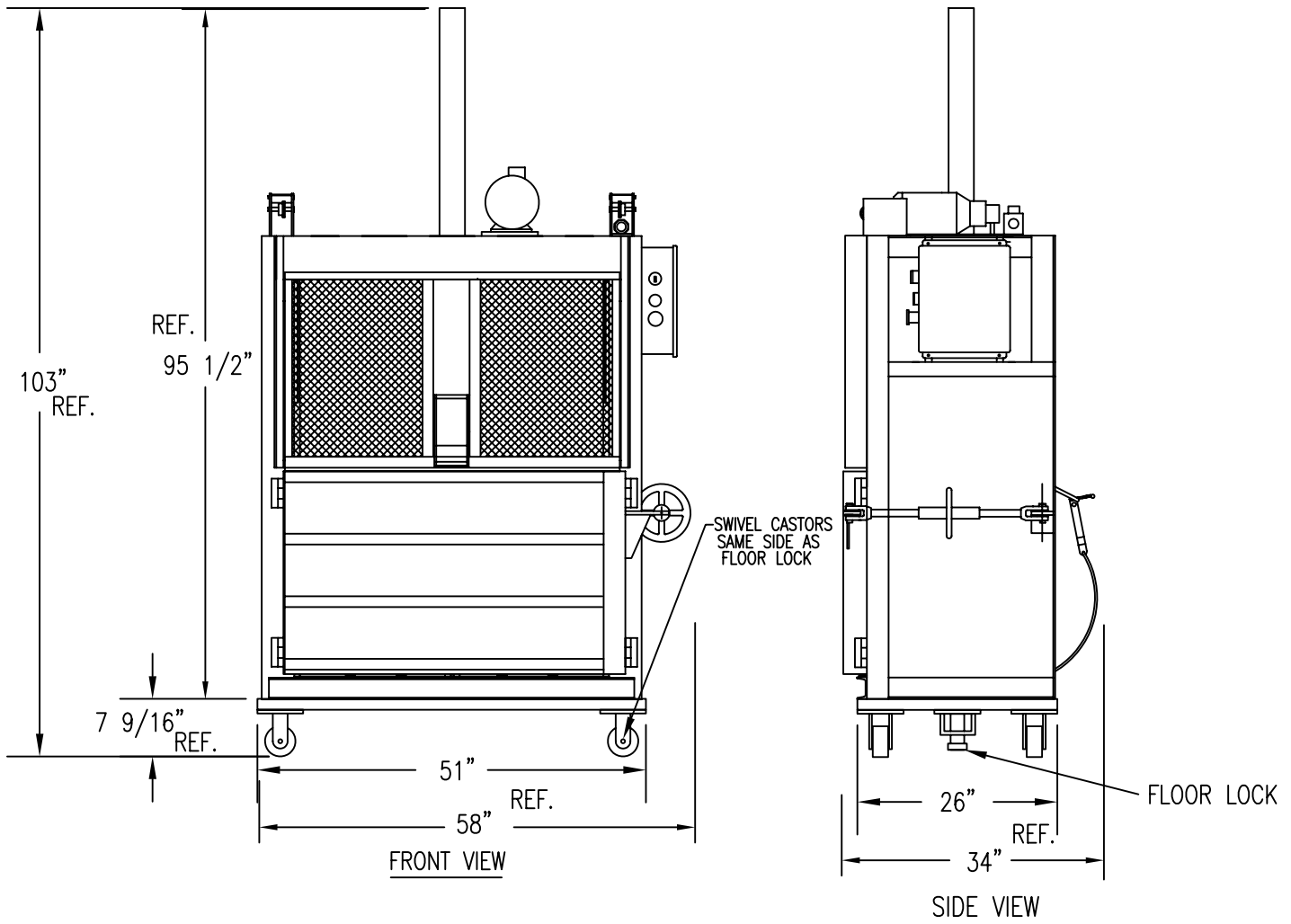
PTR BALER & COMPACTOR



ALL DIMENSION ARE FOR REFERENCE ONLY,
 ACTUAL DIMENSION MAY VARY.



PTR BALER & COMPACTOR



SPECIFICATIONS

BALE WEIGHT _____	200-400 LBS
BALE SIZE _____	42" X 22" X 30"
FEED OPENING _____	19" X 42"
TOTAL CHAMBER VOLUME _____	29 cu ft.
PLATEN AREA _____	931 sq.in.
PLATEN FORCE	
WORKING _____	11,300 LBS
RELIEF _____	14,800 LBS
AVERAGE CYCLE TIME _____	30 SEC.
CYLINDER BORE _____	3"
CYLINDER STROKE _____	32"
CYLINDER ROD _____	1 3/4"
MOTOR _____	3 HP (208/230/460V-3 PHASE)
PUMP _____	3.1 GPM
SHIP WEIGHT _____	1500 LBS