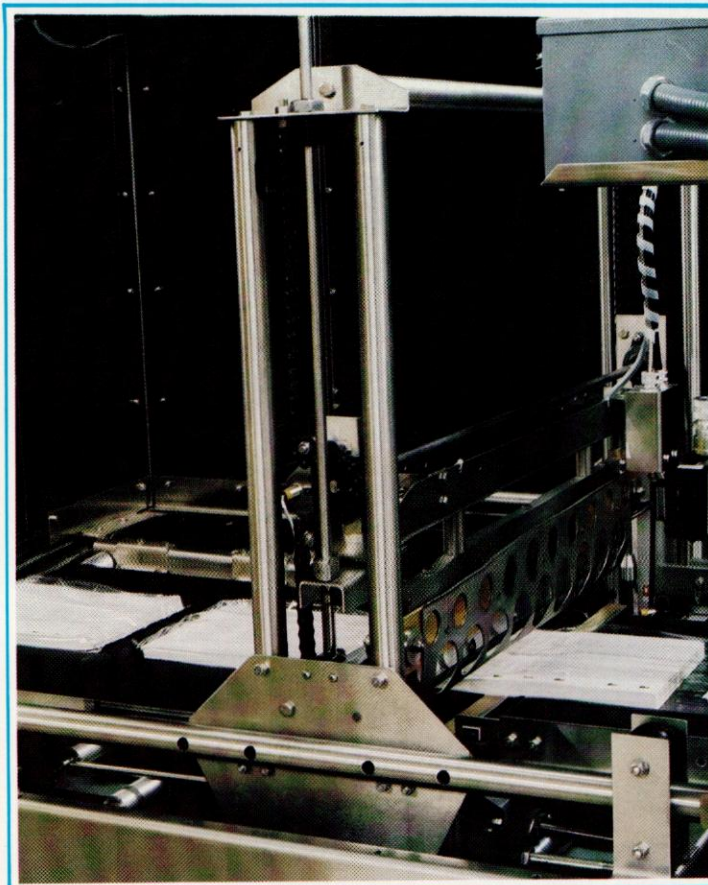


PRODUCT HANDLING EXPERTISE

Polypack's complete line of collating systems incorporate the concepts of simplicity and ease of use, insuring trouble-free operation and fast, easy changeovers. Some of the possibilities include dividing, up-ending, reorienting, and stacking with Polypack's Electromechanical or Pneumatic Systems.



SEALING AND WRAPPING VERSATILITY

Polypack's systems are designed to be compatible with most film types including polyethylene (PE), polypropylene (PP), and polyvinylchloride (PVC). Available systems include:

- Total closure and sleeve wrap.
- Horizontal and vertical sealing assembly.
- Flat and center folded film supply.
- Registered or random print film.
- Static and thermo drag sealing assembly for film overlap.

STANDARDS OF HIGH QUALITY

Heavy Duty Stainless Steel Construction

- Polypack systems are constructed with structural frames of 11-gauge stainless steel.
- Polypack systems are designed to accommodate high production speeds three shifts a day, seven days a week.

Interlocking Polycarbonate Enclosures

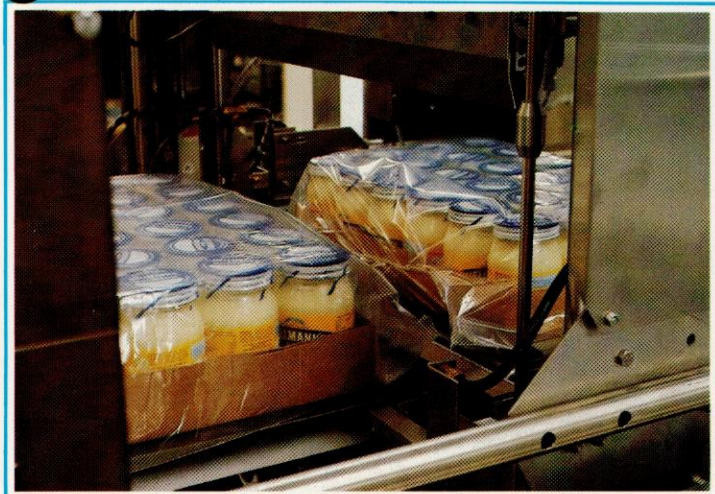
- Allow for safe visual inspection.
- Instant access to system components.
- Automatic shutdown if door is opened.

UL Listed Panels

Teflon Coated "Hot Knife" Seal Bar

CFH
SERIES





STATE OF THE ART ELECTRONIC TECHNOLOGY

All Polypack systems utilize Programmable Logic Controllers to increase overall machine efficiency.

- Production speeds, seal times, and bag lengths are controlled by the PLC, minimizing downtime and labor intensive changeovers.
- Changeovers are accomplished by simply entering a predefined Product Code on a keypad linked to the PC Programmable Controller. These product codes define the proper production speed and dimensions.

- The machine automatically adjusts itself to the proper product dimensions and required spacing.

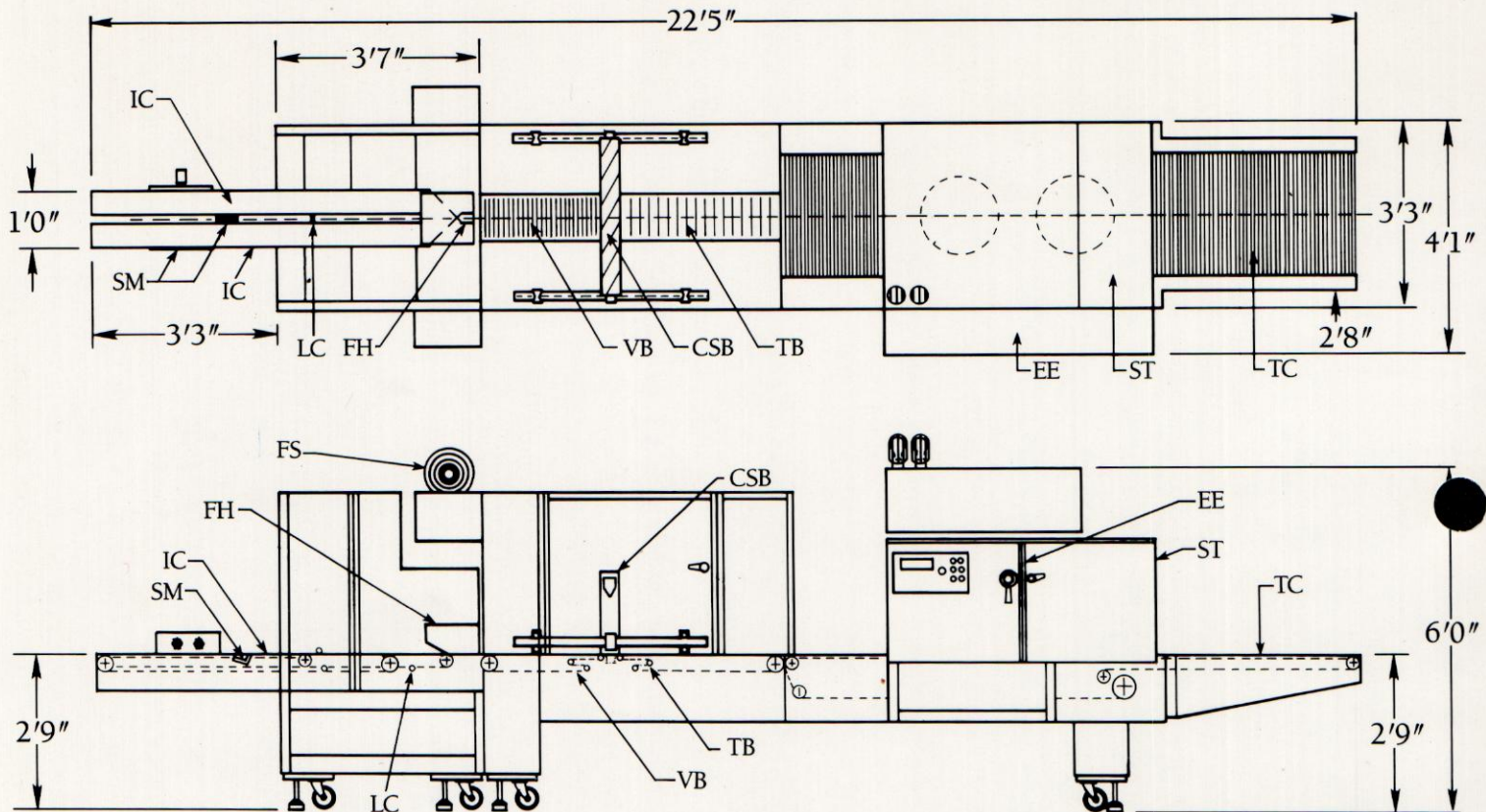
SHRINK TUNNEL FEATURES

- Energy efficient triple wall construction with two layers of fiberglass insulation.
- Thermostatically controlled for consistent temperatures.
- AC Inverter to control velocity of air flow.
- Adjustable baffles to control direction of air flow.
- Rotating conveyor rods (Live) when using PP and PVC films.
- Tunnel Conveyor is comprised of solid stainless steel rods. These rods provide a strong, naturally cooled conveyor which requires no sheathing or coating to prevent film from sticking.



A NEW BREED OF HIGH SPEED MACHINES

Polypack's full line of Continuous Motion Forming Head (CFH) shrink wrapping systems are capable of cycling up to 80 packages per minute. Virtually any length product can be run on the system. Product height up to 18 inches can be easily accommodated. For an "Operator-Friendly" packaging system backed by a superior track record of quality, reliability, service and support, talk to the Professionals at Polypack. We welcome visitors at our facilities to view machinery operation. Come see for yourself the incomparable workmanship and superior materials that go into every Polypack machine.



IC - INFEED CONVEYOR
SM - STAGING MECHANISM
LC - LUG CONVEYOR

FH - FORMING HEAD
FS - FILM SUPPLY
VB - VACUUM BELT CONVEYOR

CSB - CONTINUOUS MOTION SEAL BAR ASSEMBLY
TB - TRANSFER BELT
TC - TUNNEL CONVEYOR
ST - SHRINK TUNNEL
EE - ELECTRICAL ENCLOSURE



Polypack is located in Largo, Florida, just minutes from the Tampa International Airport. POLYPACK's manufacturing and support facilities present a unified resource, supplying technical assistance in conjunction with its machinery, POLYPACK invites your calls. You are welcome to tour and examine our manufacturing facility.

3301 Gateway Centre Boulevard
Pinellas Park, FL 33782 U.S.A.
813/578-5000
Fax: 813/578-1300

PLEASE CALL FOR NAMES OF AGENTS WORLDWIDE!

