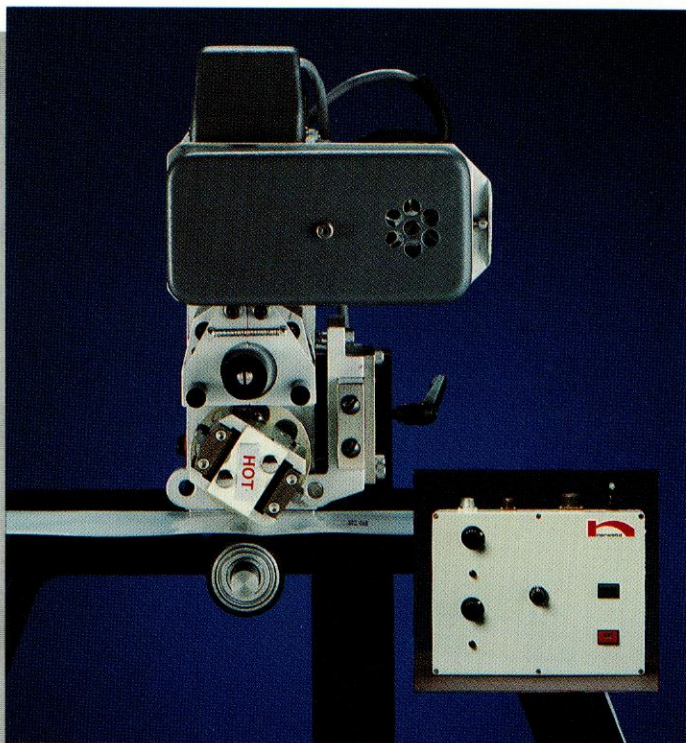


DRY INK IMPRINTERS

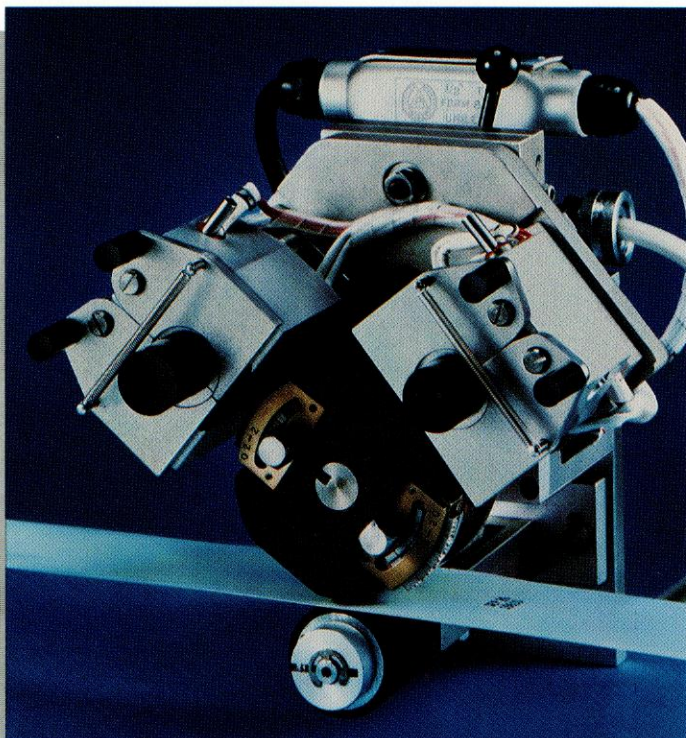
Continuous-motion dry ink imprinters for higher speed imprinting on packages and products. These imprinters employ a thermoplastic ink which is impregnated into a sponge-like roll. Heated type releases the ink from the roll and transfers it to the package. The ink is cool to the touch as soon as it leaves the type, providing instantly dry imprints.



Model EMC

Electronic, DC servo-driven, continuous-motion imprinter for high-speed applications, ideal for use on horizontal form-fill-seal, converting, cartoning and custom packaging equipment. Highest quality registration, ideal for lines that frequently change package lengths.

- Prints lot numbers, expiration dates, prices, and quality assurance numbers on packages and products.
- Maintains a tight registration at low and high speeds.



CM Series

Mechanically driven, continuous-motion imprinters for use on horizontal form-fill-seal, converting, cartoning, and custom packaging equipment.

- Prints lot numbers, expiration dates, prices, and quality assurance numbers on packages and products.
- The specific model is available to meet your needs.

Model CM-1

Features in-line imprint, registration, and cut-off adjustments. Just a turn of the dial changes imprint location while the imprinter is in operation, which greatly increases production uptime.

Model CMC-3

A compact, mechanical, single pigment roll, dry ink system which allows installation in tight areas.

Model CMC-4

Features dual pigment rolls for continuous imprinting. A turn of the lever allows pigment roll change without stopping production.





Model EMC

Imprint Size—1" x 1" (with the web) or ¼" x 1⅜" (perpendicular to the web)

Speeds—Up to 750 imprints per minute or 3750 inches per minute.

Dimensions—8¼" D x 7¼" W x 11" H

Weight—24 Lbs.

Electrical Standard*—110V AC, 60 Hz, 3A

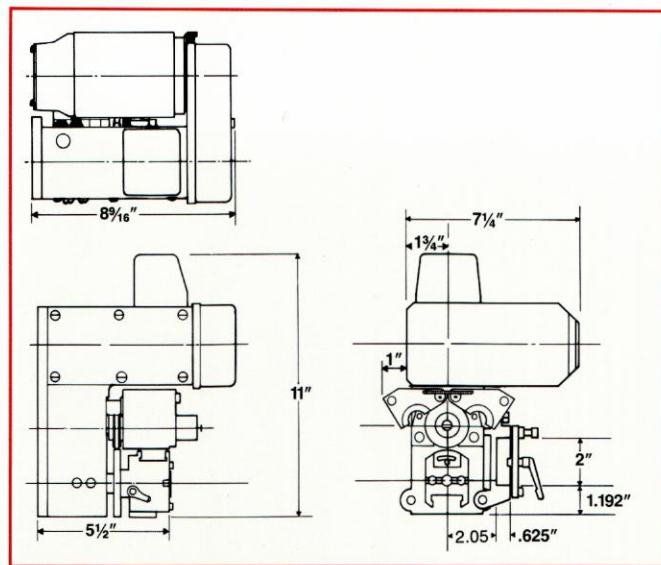
Cut-Off—5" minimum (consult Norwood for less than 5" cut-off)

Metric Equivalent (in millimeters)

Imprint Size—25.4 x 25.4 or 6.35 x 34.9

Dimensions—209.55 x 184.15 x 279.4

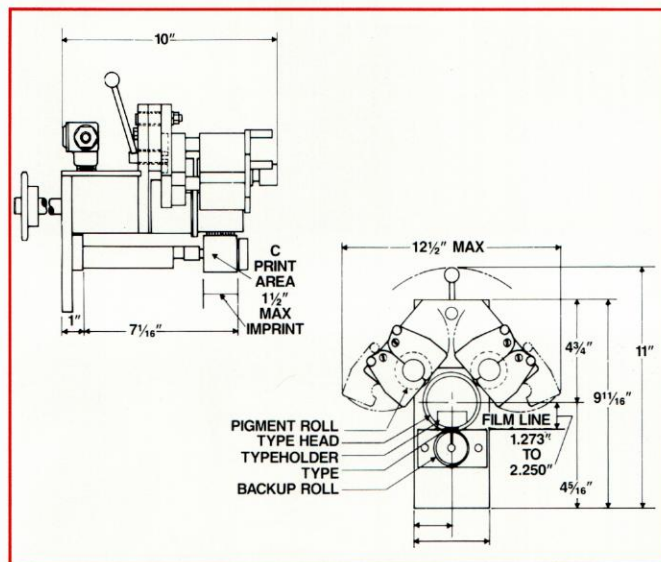
* Other Voltages Available



CM Series	CM-1	CMC-3	CMC-4
Imprint Size	½" x 1½"	1½" x 1½"	1½" x 1½"
Speeds (IPM)	Up to 1000	Up to 1000	Up to 1000
Dimensions (WxHxD)	6" x 10" x 10"	6" x 10" x 10"	12½" x 11" x 10"
Weight	12½ Lbs.	12½ Lbs.	16 Lbs.
Electrical Standard*	110V AC, 60Hz, 5A (Typical All Units)		
Cut-Off	3"–12" standard**	3"–12" standard**	8"–14" standard**
Metric Equivalent (in millimeters)			
Imprint Size	12.7 x 38.1	38.1 x 38.1	38.1 x 38.1
Dimensions	152.4 x 254 x 254	152.4 x 254 x 254	317.5 x 279.4 x 254

*Other Voltages Available

**Custom Cut-Off Available



	Model EMC	CM Series
Mounting	Brackets for most packaging machinery	Brackets for most packaging machinery
Actuation	DC Servo Drive	Parent packaging machine
Timing	Independent electronic control	Parent packaging machine
Type	Individual pieces and logos (multiple character on 1 piece) Hardened steel, Silicone and Polymer Type	Individual pieces and logos (multiple character on 1 piece) Hardened steel, Silicone and Polymer Type
Ink	Dry ink rolls	Dry ink rolls

EMC OPTIONS:

- Pigment Roll Handles
- Back-up Roller Assembly
- Tach Generator Bracket
- Print Generator Sensors:
 - Photo eye
 - Proximity Switch
 - Limit Switch
- Typeholders (straight or curved)
- Preheater
- Spare Parts Kit
- Custom Brackets

CM Series OPTIONS:

- Extra Head
- Typeholders (straight or curved)
- Preheater
- Spare Parts Kit
- Custom Brackets