



VersaPail™ Bulk Melters

20-liter or 5-gallon pail melters

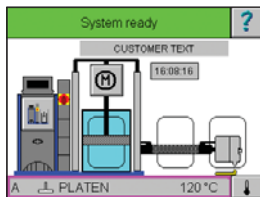
Nordson® VersaPail bulk melters are designed for precise demanding hot melt adhesive application from 20-liter or 5-gallon pails. With a variety of pump types and sizes, VersaPail melters are customizable to accommodate a wide variety of adhesives and meet specific manufacturing requirements. A powerful industrial PC provides full control of the adhesive system via a touch-screen interface and displays messages and indicators for each operator activity and every machine status condition.

VersaPail bulk melters only melt the top surface of adhesive allowing the remaining material in the pail to stay solid to reduce thermal stress and protect bonding characteristics. Particularly well-suited for reactive adhesives, such as moisture-cure polyurethanes, the hydraulic passages are designed to eliminate dead spaces where undesired curing could result.

For applications that require continuous operation, Nordson's automatic changeover system links two bulk melters together to eliminate the downtime associated with pail changes.

VersaPail melters:

- Simplify installation and set-up
- Provide easy day-to-day operation
- Offer production flexibility
- Protect adhesive integrity



Graphical, touch-screen control system provides visibility and monitoring of all operations and status conditions

Single-side access for controls and pail changes

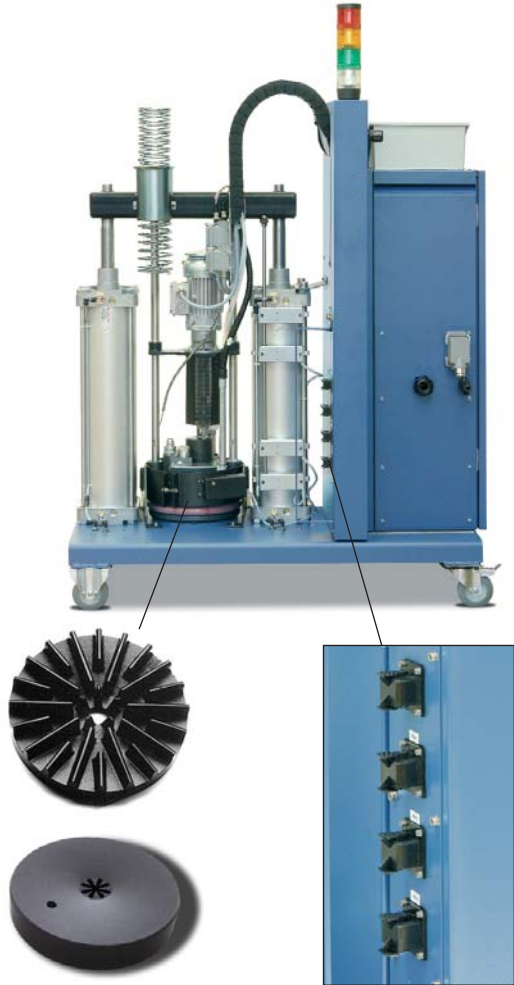


Automatic or manual aeration systems

Variable speed motors and precision gear pumps with optional dual-stream and hardened versions

Pressure control valve for accurate, adjustable pressure, and optional automatic pressure control systems

Pail centering and clamping for accurate pail positioning and control



Modular, non-stick axial and smooth melt platens for quick change and easy clean-up

Four additional temperature channels for control of spray guns, heaters, etc.

Specifications

Type of System	Gear pumps with variable speed AC motors
Pail Diameter	280 or 286 mm (11 or 11.3 in)
Maximum Pump Rate¹	92 kg/hr (203 lb/hr)
Number of Hoses/Guns	2 standard (hydraulic & electrical) up to 4 additional (electrical only)
Maximum Working Hydraulic Pressure	100 bar (1500 psi)
Operating Temperature Range	40 to 230°C (100 to 450°F)
Ambient Temperature Range	-5 to 40°C (23 to 100°F)
Temperature Control Stability	±1°C (2°F)
Temperature Sensor	Ni 120 (or PT-100 optional)
Electrical Service²	200 VAC 3 phase delta 50/60 Hz 240 VAC 3 phase delta 50/60 Hz 400 VAC 3 phase Y 50/60 Hz 400 VAC 3 phase delta 50/60 Hz 480 VAC 3 phase delta 50/60 Hz
Maximum System Power Capacity	21000 watts
Weight (empty)³	332 kg (732 lb)
Input/Output Capability Standard	6 Inputs 6 Outputs
Melter Dimensions (W x H x D)	1190 x 1920 x 540 mm (46.9 x 75.6 x 21.3 in)
Installation (service) Dimensions	1570 x 1920 x 903 mm (61.8 x 75.6 x 35.6 in)
Protection	IP54



¹ Actual rates will vary depending on adhesive type, application parameters and input voltage.
² Permitted deviation from rated line voltage is ±10%.
³ Weight depends on melter configuration.

For more information, talk with your Nordson representative or contact your Nordson regional office.

United States
 Duluth, Georgia
 Telephone: (800) 683-2314
 Toll-free Facsimile:
 (866) 667-3329

Canada
 Markham, Ontario
 Telephone: (800) 463-3200
 Facsimile: (905) 475-8821

Europe
 Lüneburg, Germany
 Telephone: (49) 4131-894-0
 Facsimile: (49) 4131-894-149

Japan
 Tokyo, Japan
 Telephone: (81) 3-5762-2700
 Facsimile: (81) 3-5762-2701

**Asia/Australia/
 Latin America**
 Amherst, Ohio
 Telephone: (440) 985-4797
 Facsimile: (440) 985-1096

www.nordson.com



When you expect more.®

Nordson Corporation • 11475 Lakefield Drive • Duluth, Georgia 30097-1511