



# Tabletop Automation Systems

*Increase productivity of precision dispensing applications without giving up valuable floor space.*

### Multi-Axis Tabletop Robots

Nordson® multi-axis tabletop robots offer reliable operation with excellent repeatability for dispensing adhesives and sealants in gasketing, bonding, molding and sealing applications

Tabletop robots are ideal for low volume production, lab facilities or companies moving to lean manufacturing cells. The units are constructed of die cast aluminum bases with extruded aluminum precision slides. The controls are integrated into the robot base, which includes a built-in PLC and internal power supply to actuate end-of-arm tooling (dispenser). The tabletop robots are true three-dimensional motion control systems, which allow the operator to program compound arcs and patterns on different planes.

### X/Y, Z and R-Axes

The Nordson multi-axis tabletop robots accommodate several working envelope sizes from 200mm x 200mm to 500mm x 500mm. The robots feature five-phase micro-stepping motors and belt driven X and Y axes. The Z axis utilizes a zero backlash precision

ball screw. Position repeatability of  $\pm 0.004$  inches (0.01mm) per axis is achieved. Position repeatability of the optional rotational axis is  $\pm 0.02^\circ$ .

### Programming Interface

The robots incorporate innovative, user-friendly programming and user interface. The teaching pendant has a large backlit LCD with seven text lines to allow the operator easy viewing of program and point parameters. Windows™ – based PC software is also available.

### Optional PC Software

The optional PC software provides the ability to program from .dxf files and uses a spreadsheet format for easy data management. This software provides virtually unlimited memory capacity.



*Shown with integrated dispense equipment.*



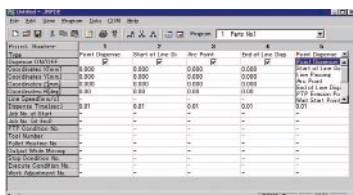
*Shown with integrated vision and height sensing equipment.*



**Packaging - Processing**  
**Bid on Equipment**  
1-847-683-7720  
[www.bid-on-equipment.com](http://www.bid-on-equipment.com)



Teaching Pendant



Optional PC Software

MODEL	JR2203/04	JR2303/04	JR2403/04	JR2503/04
<b>Axis</b>	3/4	3/4	3/4	3/4
<b>Moving Range:</b>				
X/Y (mm)	200 x 200	300 x 300	400 x 400	500 x 500
Z (mm)	50	100	150	150
R (degrees)	NA/±360	NA/±360	NA/±360	NA/±360
<b>Portable Weight:</b>				
Work (kg)	7	11	11	11
Tool (kg)	3.5	6	6	6
<b>Maximum Speed: (PTP)</b>				
X/Y (mm/sec)	500	800	800	800
Z (mm/sec)	250	320	320	320
R (degrees/sec)	NA/600	NA/800	NA/800	NA/800
<b>Maximum Speed*: (CP)</b>				
X/Y/Z (mm/sec)	500	800	800	800
<b>Speed Range:</b>				
X/Y (mm/sec)	5~500	8~800	8~800	8~800
Z (mm/sec)	2.5~250	3.2~320	3.2~320	3.2~320
R (degrees/sec)	6~600	8~800	8~800	8~800
<b>Maximum R Axis Inertia (kg•cm<sup>2</sup>)</b>	NA/65	NA/90	NA/90	NA/90
<b>Repeatability XY (mm)</b>	±0.01	±0.01	±0.01	±0.01
<b>Accuracy:</b>				
Z (mm)	±0.01	±0.01	±0.01	±0.01
R (degrees)	NA/±0.02	NA/±0.02	NA/±0.02	NA/±0.02
<b>Weight (kg)</b>	18	35	42	43

\* This may change by the driving conditions.

**Teaching Method(s):** Remote teaching (JOG), MDI (Manual Data Input) teaching

**Teaching System:** JR Points: Simple and broad use teaching system

- Simple: easy teaching only by registering position and parameter; memory card is supplied corresponding to all applications.
- Broad use: Programming the original I/O control, etc. for users by registering the point job teaching.

**Teaching Method(s):** Teaching by teaching pendant  
Teaching by PC (optional)

**Data Memory Capability:** Maximum 6,000 points or 100 programs

**Drive Method:** 5-phase stepping motor

**Control Method:** Point to Point (PTP), Continuous Path (CP)

**Interpolating Function:** 3 dimensional line and arc interpolation

**External Interface:** RS232C 2 ch (for PC 1 ch, for teaching pendant 1 ch), for external equipment 1 ch (optional)

**External Input/Output:** 16 points for input, 16 points for output

**PLC Function:** 50 programs, 100 steps/program

**Power Supply:** AC90~132V VAC180~250V (single phase)

**Consumption Current:** 200VA

Windows™ is a trademark of Microsoft

For more information, talk with your Nordson representative or contact your Nordson regional office.

**United States**  
Duluth, Georgia  
Telephone: (800) 683-2314  
Toll-free Facsimile:  
(866) 667-3329

**Canada**  
Markham, Ontario  
Telephone: (800) 463-3200  
Facsimile: (905) 475-8821

**Europe**  
Lüneberg, Germany  
Telephone: (49) 4131-894-0  
Facsimile: (49) 4131-894-149

**Japan**  
Tokyo, Japan  
Telephone: (81) 3-5762-2700  
Facsimile: (81) 3-5762-2701

**Asia/Australia/  
Latin America**  
Amherst, Ohio  
Telephone: (440) 985-4797  
Facsimile: (440) 985-1096

[www.nordson.com/productassembly](http://www.nordson.com/productassembly)



When you expect more.®