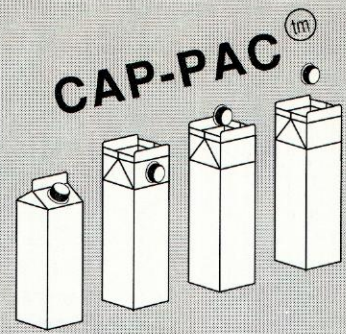
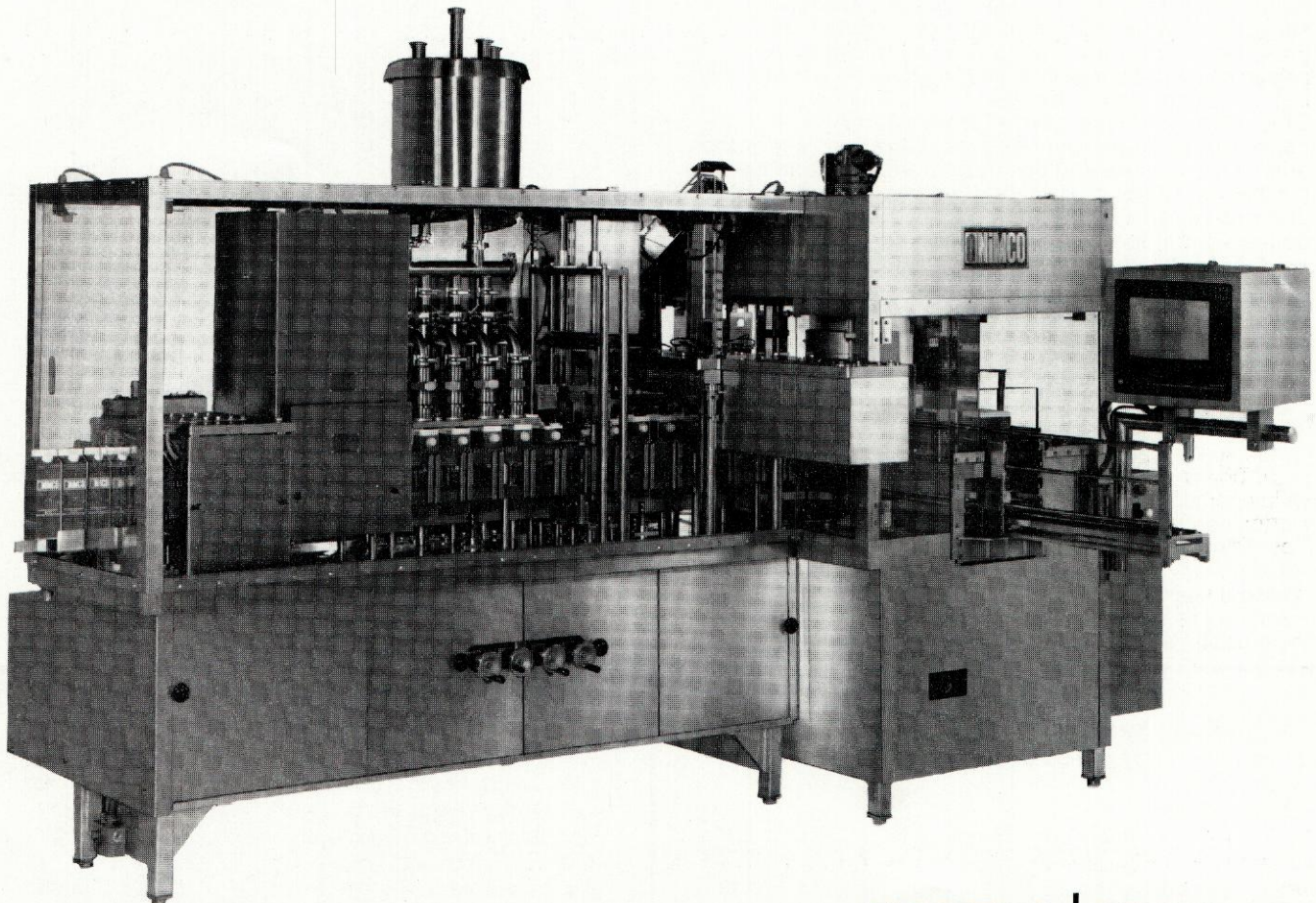


NIMCO®



FORMER/APPLICATOR/FILLER/SEALER



MODELS | CP650
CP450

TECHNICAL SPECIFICATIONS

- 100% Mechanical Drive - All Cam Operated
- No Hydraulics, Electronics, Pneumatics or Timers
- Positive Piston Filling for Accuracy
- Central Manifold Greasing System
- Water Cooled Mandrels - City Water - Low Usage
- Variable Speed - Heavy Duty Index Drive
- Completely Automatic Infeed and Discharge
- Meets All Local, State and Federal Sanitation Requirements
- Changeovers are Fast, Simple and Positive
- Trouble Free Performance and Low Maintenance Cost
- Many Options and Different Fillers Available
- Designed for One Man Operation
- U.S. and Foreign Patents and Copyrights Issued and Pending

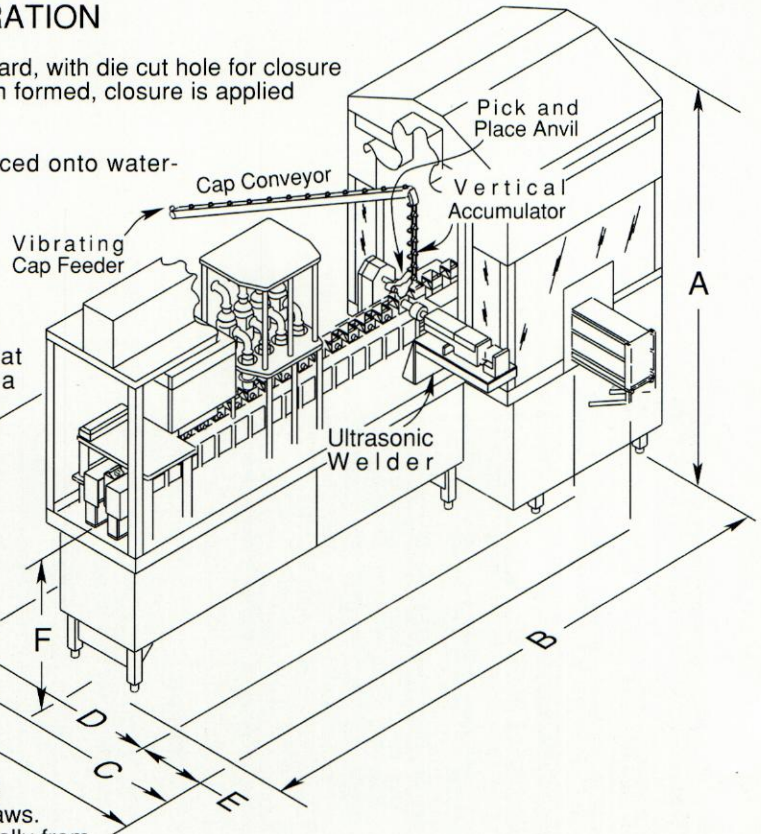
PACKAGING MACHINERY FOR THE DAIRY & FOOD INDUSTRIES

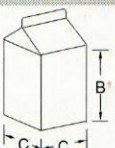
GAP-PACtm


DESCRIPTION OF OPERATION

Carton blanks (sleeves) made from plastic-coated paperboard, with die cut hole for closure are loaded into the NiMCO machine where they are bottom formed, closure is applied to gable top, filled with product and top sealed.

- Flat side sealed blanks are opened, squared and placed onto water-cooled forming mandrels.
- Bottom flaps are formed, heated, closed and pressure sealed by a water cooled sealing plate (sealing is done by melting and re-hardening the cartons plastic-coating. After bottom sealing, cartons are set into carriage conveyor pockets.
- Closure assemblies are fed from a floor level bulk hopper through a stainless steel vibrating feeder that orients the closure and positively transfers them onto a mechanical conveyor elevator. Closures are separated and conveyed to a vertical accumulator that delivers them to the rotating pick and place anvil. This unique device picks a closure from the vertical accumulator then rotates inside the carton and transversely inserts the closure through the die cut hole where the flange of the closure is ultrasonically welded to the interior of the carton sealing off the raw edge of the paperboard. This entire pick, place and weld operation is completed in one station.
- Cartons are moved and exactly filled by a piston Posi-Filler.
- After filling, carton top flaps are heated, closed and pressure sealed with water-cooled compression sealing jaws.
- Filled and sealed cartons are then discharged automatically from the machine and are ready for distribution.



		CP650	CP450			CP650	CP450
LINE SPEED (CPM)				GENERAL SPECIFICATIONS			
1/2 Pint thru Pint (250ml thru 500 ml)	Upto	40	-	Machine Dimensions			
1 Quart (1Liter)	Upto	40	-	- A Overall Height - inches (m)	80 2	80 2	
1/2 Gallon (2 Liter)	Upto	-	35	- B Overall Length - inches (m)	123 3	123 3	
Maximum Capacity (CPH)		2400	2100	- C Machinel Width - inches (m)	74 1.6	74 1.8	
Number of Filling Valves Per Line		4	4	- D inches (m)	47 1	47 1	
Number of Seal Jaws Per Line		2	2	- E inches (m)	24 .6	24 .6	
CARTON CROSS-SECTION				- F Carton Discharge Height - inches (m)	39 1	39 1	
	Quart / Liter	X	-	- G Cap Sorter/Conveyor Width - inches (m)	60 1.5	60 1.5	
	- C = 2-3/4 inch / 70mm			- H Overall Width - inches (m)	134 3.4	134 3.4	
	1/2 Gallon / 2 Liter	-	X	Floor Area ft ² (m ²)	122 11	122 11	
	- C = 3-3/4 inch / 95mm			Product Tank 1-1/2 inch inlet - gallons (liters)	7 26	7 26	
UTILITIES				Machine Weight (lbs.)	5500	5500	
Electrical Requirements: (* 220V-50/60Hz-3Ph)				(kg)	2500	2500	
	- Forced Air Bottom & Top Heater	27KVA	27KVA	Shipping Weight (lbs.)	6000	6000	
	* 380V, 415V and 440V is optional.			(kg)	2724	2724	
	Cooling Water - 50°F (10°C) max - 1/2 inch inlet			Shipping Crate Size			
	- gpm (lpm)	2 8	2 8	- X inches (m)	72 1.8	72 1.8	
	Air @ 85psi (5.8 bar) 1/2 inch inlet - scfm (lpm)	25 705	25 705	- Y inches (m)	144 3.6	144 3.6	
				- Z inches (m)	82 2	82 2	
				Speeds are Subject to Product and Carton Variations.			
				Imperial Size Carton Speeds are Dependent upon Product.			

 **NiMCO CORPORATION**
 4012A Route 14 - Box J
 Crystal Lake, IL 60014
 Tel (815) 459-4200 Fax (815) 459-8119 Telex 72-2425