



Vertical Feed Unscrambling Model: NEVF



NEVF Vertical Feed Unscrambler

The Vertical Discharge Unscrambler features the following sequence of operation.

Containers are loaded into the floor level hopper and transported in bulk via the cleated belt elevator to the sorter bowl. The containers are fed to the sorter bowl in a timed sequence to match demand from the unscrambler. The slow rotary action of the sorter bowl, coupled with the action of strategically placed optional air jets,

move the containers to the outside circumference of the bowl where they fall into the delivery track. The containers exit the bowl laying down in both base and neck leading configuration. Upon reaching the orienting section all containers are inspected and oriented, then dropped vertically, base down. The bowl runs at a higher speed than the orienting section, ensuring a continuous supply of containers.

With all containers now stacked in a base-leading configuration, they are ready to be transferred into the filler star wheel. In some applications an escapement may be required at the bottom of the chute to release one container at a time.



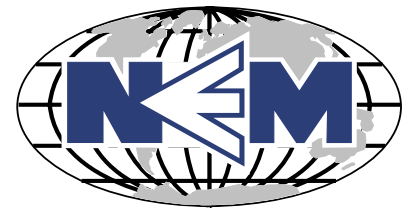
Close-up of the container orienting area

NEVF Snapshot:

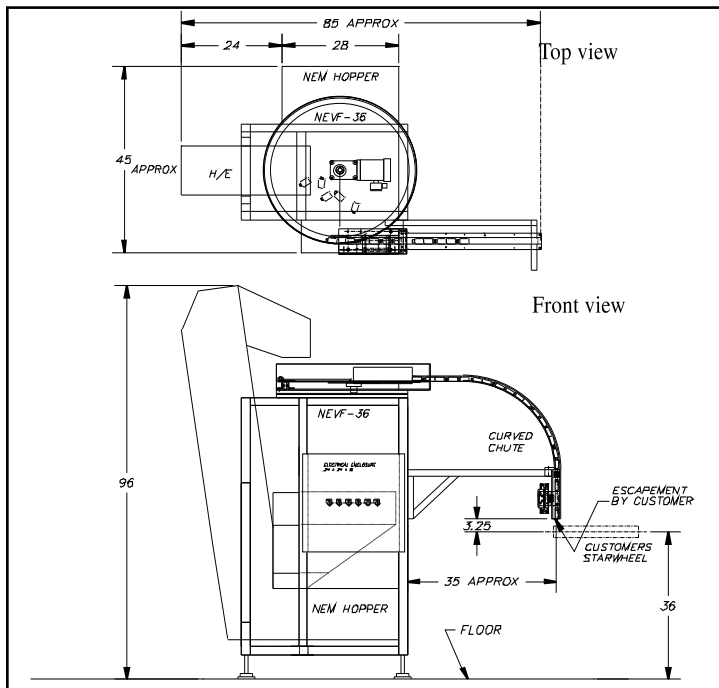
- Tubular 304 Stainless Steel Welded Frame
- Tumbled 6061 Aluminum and 304 Stainless Steel Construction
- Clean, Non-Painted, Non-Marring Surfaces
- Smoothed and Polished Welds
- Clear Acrylic Hinged Guarding Doors where applicable
- Manual Dump Valve (Release all Compressed Air From the System)
- Safety Interlocks on All Guard Doors not requiring the use of tools
- 36" Sorting Bowl with Acrylic Bowl Cover
- Soft Start & Stop Features
- Jog Switch w/ 10 Foot Cord
- Adjustable Discharge Height 36" ± 2"
- High Floor Clearance
- One Operations & Maintenance Manual (CD)
- Direct Discharge to Customer's Star Wheel

New England Machinery, Inc.

Innovators In Container Handling Systems



NEVF Specifications



ELECTRICAL FEATURES

- NEMA-12 Electrical
- 220 Volt, Single Phase w/ Ground Wire, 60Hz Input Requiring 30 Amp Svc.
- Backlog Photo Eye w/Automatic Stop & Restart
- TEFC AC High Efficiency Motors
- AC Drive

PNEUMATICS

- 5-10 cfm @ 80 psi of clean, dry, oil free house supplied compressed air



Close-up of the integrated hopper/elevator

NEVF Vertical Feed Unscrambler can be configured to customer specification, upon request.

New England Machinery, Inc.
 2820 62nd Ave East, Bradenton, FL 34203 U.S.A.
 941/755-5550 Fax: 941/751-6281
 www.neminc.com E-mail: info@neminc.com

Changes in machine design or specifications are a result of continuous machine improvements and New England Machinery, Inc. reserves the right to change standard specifications without prior notice. The above illustration(s) and text are representative in scope only.

NEVF 03/08

Optional Equipment

- Change from Std. (36" ± 2") discharge height
- Cluster central lubrication
- Digital container counter (Bottles Per Minute)
- Stainless steel machine skirting
- Upgrade machine guarding to polycarbonate
- Extra operation and maintenance manual (Hard Copy)
- Extra operation and maintenance manual (CD Format)
- Transformer with mechanical safety switch
- Additional emergency "E" stop (each)
- Machine status (Four Light Post)
- Low air safety (Will Stop machine at pre-set minimum level)
- Low level bin sensor w/rotary beacon light or alarm