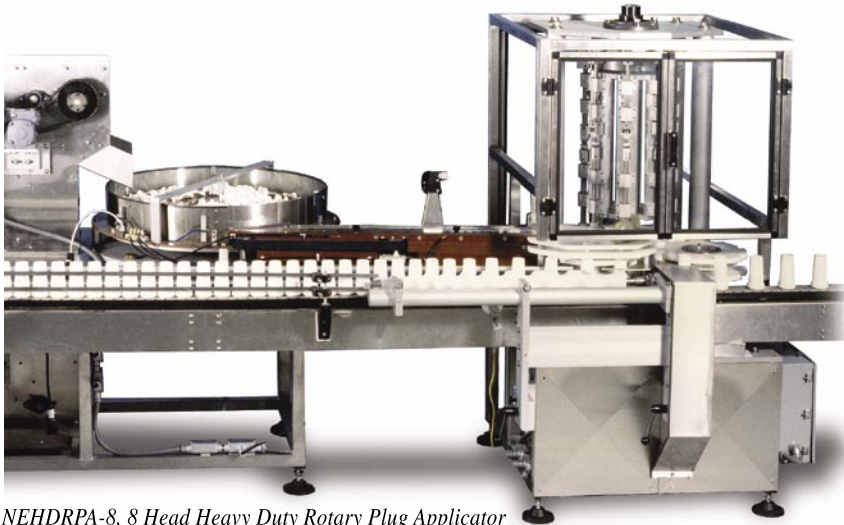
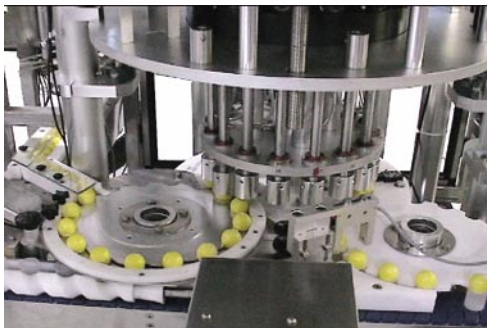


Rotary Plug Applicator Model: NERPA/NEHDRPA



NEHDRPA-8, 8 Head Heavy Duty Rotary Plug Applicator



16 head plug applicator



16 head plug applicator

Versatile: New England Machinery's Rotary Plug Applicator comes in two models. The model NERPA places plugs into containers at speeds up to 150 cpm. The model NEHDRPA is a heavy-duty rotary plug applicator that places plugs into containers at high speeds.

Accurate: Both the NERPA and NEHDRPA are continuous motion rotary devices that precisely align and place plugs into containers. The plugs are gently pressed into the containers to a pre-determined depth. Plugged containers are then transferred to the discharge starwheel and exit the system to the customer-supplied conveyor.

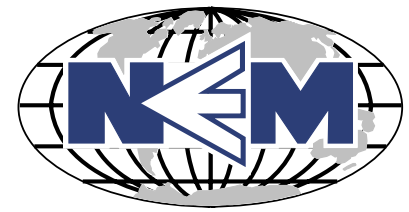


Our pluggers can handle numerous applications

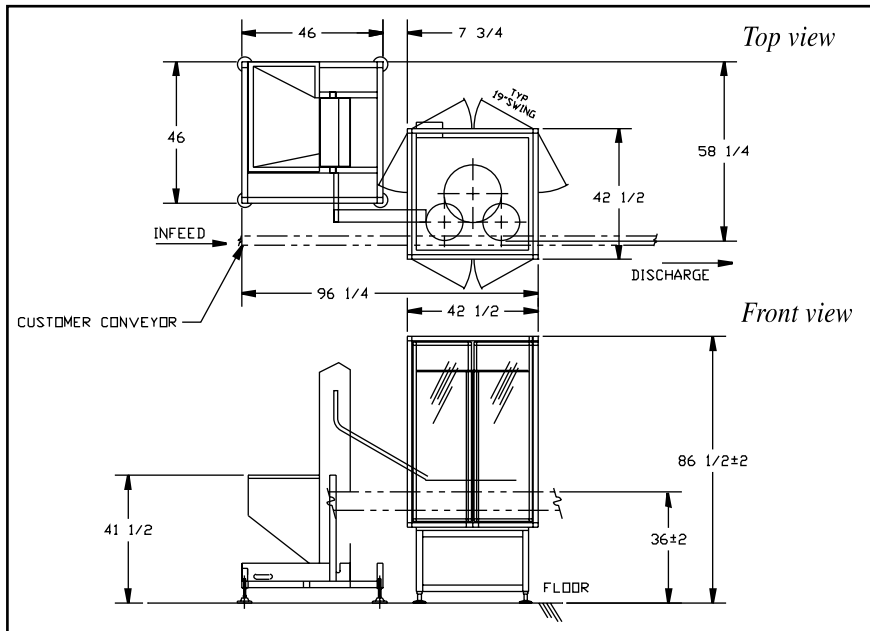
NERPA/ NEHDRPA Snapshot:

- Tubular 304 stainless steel welded frame
- 6061 aluminum
- Clean, non-painted, non-marring surfaces
- Clear acrylic guard with stainless steel lower frame cover
- Safety interlocks on all guard doors
- Adjustable discharge height 36" +/- 2"
- High floor clearance
- Smoothed and polished welds
- Operations and maintenance manual
- Handwheel adjustments for bottle height change
- Jog switch with 10 foot cord
- Soft start and stop features

New England Machinery, Inc.
Innovators In Container Handling Systems



NERPA/NEHDRPA Specifications



Optional Equipment

- Anodized aluminum
- NEMA-4 (wash down)
- NEMA-7 (explosion proof)
- Transformer for different input voltages
- Missing plug detector/container rejecter
- Change from standard discharge height 36" +/- 2"
- Left-hand discharge
- Low plug level warning
- Digital container counter (bottles per minute)
- Upgrade polycarbonate
- Heavy duty lockable caster wheels
- Additional emergency "E" stop buttons
- Allen-Bradley® HMI (human machine interface)
- Cluster central lubrication
- Low air safety shut off
- Spare parts kit

BENEFITS

- Easy changeover
- Accurately aligned placement of plug
- No clutch wear parts
- Handles a wide variety of plugs
- Positive container handling via profiled servo controlled indexing wheel

ELECTRICAL FEATURES

- NEMA-12 electrical
- 208/220 V., single phase, 50/60 Hz, input requiring 30 amp service
- Backlog photo eye with automatic stop and restart
- TEFC AC Motors
- AC variable frequency drives

PNEUMATICS

- 5-10 cfm @ 80 psi, clean, dry, and oil-free compressed air

NERPA Rotary Plug Applicator can be configured to customer specification, upon request.

New England Machinery, Inc.
 6204 29th Street East, Bradenton, FL 34203 U.S.A.
 941/755-5550 Fax: 941/751-6281
 www.neminc.com E-mail: info@neminc.com

Changes in machine design or specifications are a result of continuous machine improvements and New England Machinery, Inc. reserves the right to change standard specifications without prior notice. The above illustration(s) and text are representative in scope only.