

## Rotary Orienter System

Model: NERO



*NERO-10 Rotary Orienting System (shown orienting filled containers)*

The freestanding Model NERO Rotary Orienter accepts incoming containers directly from a customer's existing pass-through conveyor chain by means of a feed screw and in-feed star-wheel. Once inside the NERO, sensors will look for correct orientation and detect incorrectly oriented containers. Incorrectly oriented containers are then rotated 90, 180, or 270 degrees as required to provide correct discharge orientation. The oriented containers are then returned to the customer's conveyor. This system can be configured in as many as 30 orienting stations within a single turret, allowing the system to orient up to 600 containers per minute.

**Versatile** - The NERO can read bottle shape, label or UPC code and orients as required. It can handle a wide variety of container shapes and sizes. Containers can be filled, empty, capped or uncapped. The sensing mechanism may consist of photoelectric sensors, proximity sensors, electromechanical sensors or vision systems, depending upon the application.

**Gentle Container Handling** - The NERO gently turns the containers 90, 180, or 270 degrees without marring or damaging the container or touching the label. This method of orientation provides positive container control throughout the system.

**High Speed** - The NERO can be configured with a different number of orienting stations within a single turret and offers speeds as high as 600 cpm.

### NERO Snapshot:

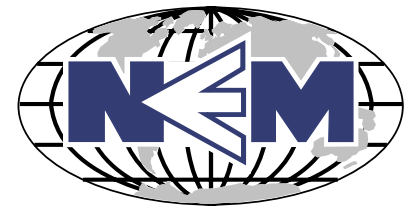
- Tubular 304 stainless steel welded frame
- Anodized aluminum and 304 stainless steel construction
- Clear acrylic guarding w/stainless steel lower frame covers
- Soft start and stop features
- Jog switch w/ 10 foot cord
- Adjustable discharge height 36" ± 2"
- High floor clearance
- Smoothed and polished welds
- Operations and maintenance manual
- Direct discharge to customer's constant speed, continuous motion conveyor
- Orients empty or filled containers
- UL listed components



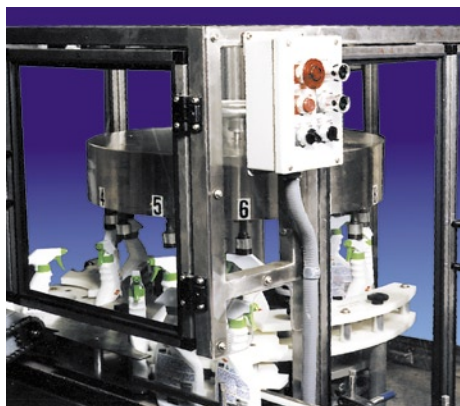
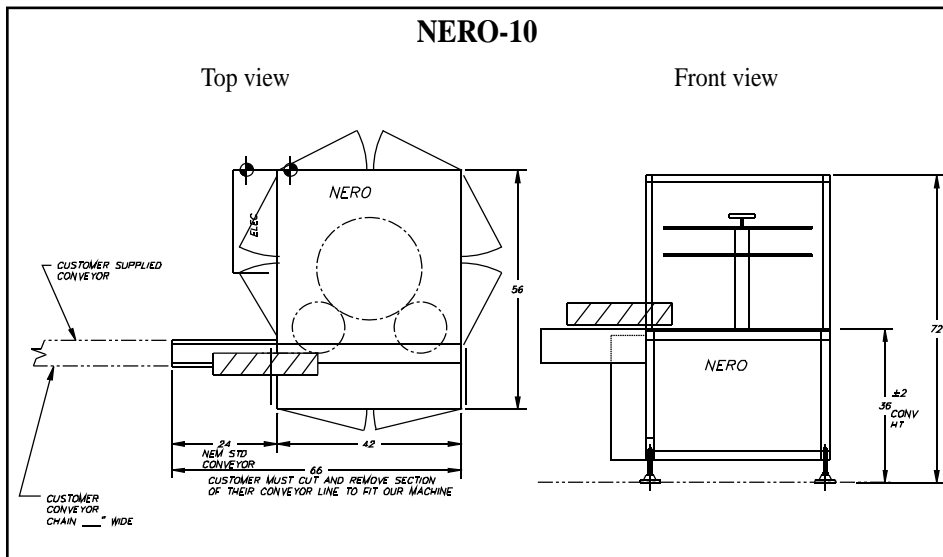
NERO-8

**New England Machinery, Inc.**

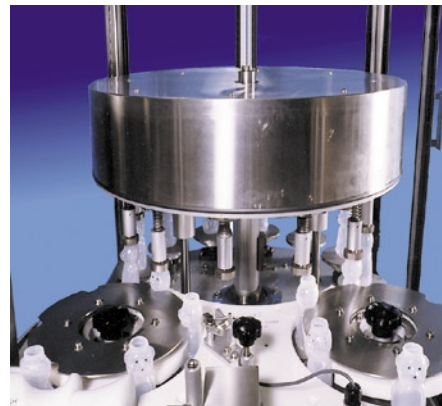
*Innovators In Container Handling Systems*



## NERO Specifications



NERO-8 with trigger spray bottles



NERO-10 with honey bear style bottles

### ELECTRICAL FEATURES

- NEMA-12 electrical
- 220 volt, single phase, 60Hz input requiring 15 amp service
- Backlog photo eye w/automatic stop and restart
- TEFC (totally enclosed fan cooled) AC motors
- AC variable frequency drives
- Integral electrical enclosure
- Allen Bradley® micrologix 1200PLC

### PNEUMATICS

- 5-10 cfm. @ 80 psi. clean, dry compressed air

NERO can be configured to any customer specification, upon request.

**New England Machinery, Inc.**  
 2820 62nd Ave East, Bradenton, FL 34203 U.S.A.  
 941/755-5550 Fax: 941/751-6281  
 www.neminc.com E-mail: info@neminc.com

Changes in machine design or specifications are a result of continuous machine improvements and New England Machinery, Inc. reserves the right to change standard specifications without prior notice.

NERO 05/06

### Optional Equipment

- Central lubrication cluster
- Digital container counter (bottles per minute)
- Left-hand discharge
- Minimum tools quick change feature
- Polycarbonate hinged door
- Extra operation and maintenance manual
- Change from std. (36" ± 2") discharge height
- Anodized aluminum

### Electrical Options

- Electric height adjustment
- Vision system for sensing front or back of symmetrical container
- Additional emergency "E" stop
- Machine status (four light post) with annunciator
- Multi-speed operation mode (100%, 75% and 50% of production speed)