

*The New England Machinery
NEHLB Large Bottle Unscrambler*

New England Machinery introduces their NEW Model NEHLB low speed gallon and 1/2 gallon unscrambler, that automates your hand-fed production line at a very affordable price. The NEHLB also provides ergonomic safety features based on the packaging industry's stringent demands. This simple, reliable system feeds containers on-demand, functions without operator attention, and with single shift operation gives you an R.O.I. in less than one year.

ERGONOMIC SAFETY - The NEHLB is designed specifically for applications where manual container placement puts operators at risk of repetitive motion injuries. The NEHLB cost effectively automates the container placement process.

COMPACT DESIGN - The low profile design allows operators immediate access, without the use of ladders or stairs.

LOW MAINTENANCE REQUIREMENTS - The NEHLB has only three moving sub-systems: the feed bowl, timing belt and orienter section.

POSITIVE CONTAINER PLACEMENT - The NEHLB releases containers to your line with a field-proven positive placement system. This non-scuffing, stable operation eliminates the possibility of containers falling at discharge, and the need for operator intervention.

AUTOMATIC BACKLOG PROTECTION - The NEHLB is equipped with line monitoring capabilities. The system automatically stops and starts according to the demands of your production line.

OPTIONAL CONVEYOR - New England Machinery will deliver a turn-key NEHLB to your plant, complete with a conveyor constructed to your width, length and rail specifications.

OPTIONAL SECONDARY ORIENTATION - Paired with the patented New England Machinery Directionalizer Model SO-3 secondary orienter, the system can orient the handles of most off-set neck containers.

OPTIONAL 3 HEAD ROTARY CAPPER - Specifically designed for your large bottle capping operations.

FEATURES & BENEFITS

- Fully automatic with backlog photo eye
- Cost-effectively eliminates manual container placement on low speed lines
- Uses New England Machinery's time-proven positive placement system
- No rails, buckets or pocketed components
- Compact, space-saving design
- SCR variable speed control
- Open design for easy maintenance access
- Stainless steel and aluminum construction
- Clear acrylic safety guards
- Soft start and stop
- Quick payback
- Excellent R.O.I.

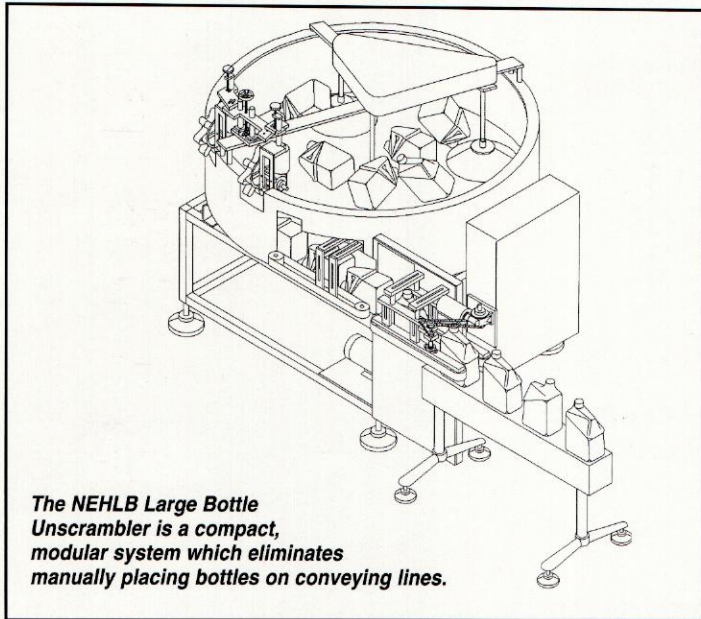


NEW ENGLAND MACHINERY, INC.
"An Ergonomically Responsible Company"

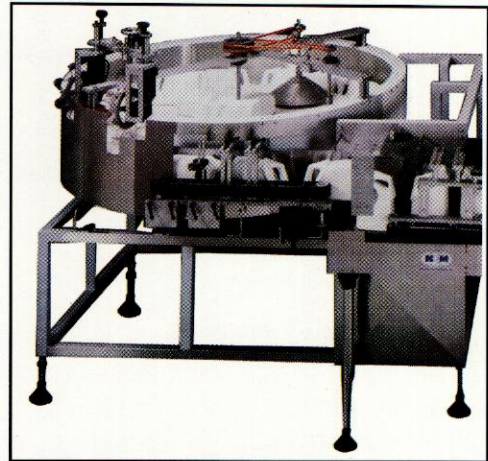
MODEL NEHLB LOW SPEED LARGE BOTTLE UNSCRAMBLER

**ECONOMICAL, AUTOMATIC
UNSCRAMBLING SYSTEM
DESIGNED FOR GALLON
AND HALF-GALLON CONTAINERS**

SPECIFICATIONS



The NEHLB Large Bottle Unscrambler is a compact, modular system which eliminates manually placing bottles on conveying lines.



The NEHLB Large Bottle Unscrambler

Specifications

POWER: 220V / 1Ø / 60Hz / 20 amps
 RATING: NEMA-12
 AIR: 10 cfm @ 80 PSI/15-20 cfm @ 80 PSI with cleaner

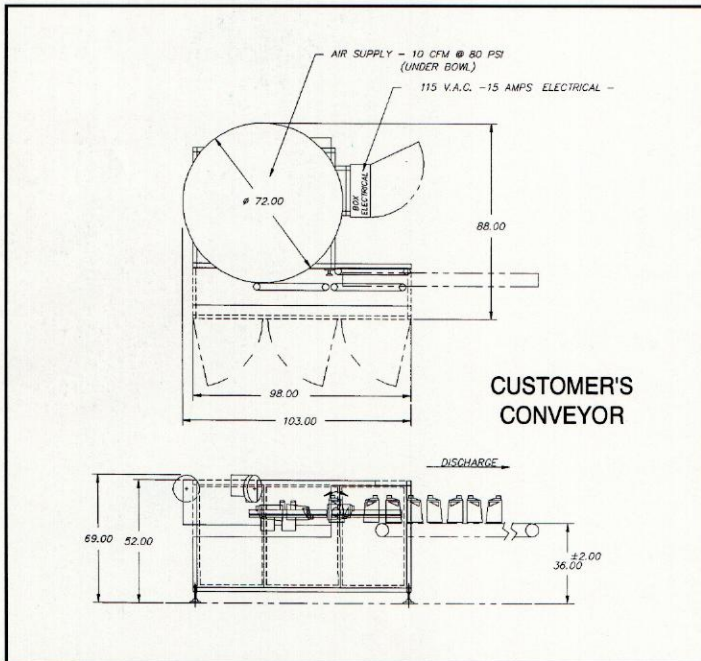
36" ± 2" discharge height

Auxiliary Equipment:

- Interface for non-contact coders
- Synchronization
- Secondary orientation
- Roll Ramp discharge
- Pucking
- Bottle inspection / rejection systems

Options:

- 60", 72" & 100" bowl diameters available
- Safety interlocks
- Other NEMA ratings (wash down, explosion proofing, etc.)
- Other PLC brands available
- Transformer for different input voltages & 50Hz
- PC interfacing with customer master controls
- UL listing available
- Dust covers for bowl and/or hopper/elevator
- Low level hopper indicator
- Bottle/minute counter
- Spare parts kits
- Extended ranges
- Custom engineered functions
- Turn-key system, complete with conveyor built to customer specifications



Typical Plan and Profile views.



NEW ENGLAND MACHINERY, INC.

"An Ergonomically Responsible Company"

World Headquarters
 6204 29th Street East
 Bradenton, Florida 34203
 Telephone: 813/755-5550
 Telefax: 813/751-6281
 Telex: 6813344

European Headquarters
 New England Machinery, Ltd.
 Szeged-Kiskundorozsma
 Kettőshatár Ut 4
 H-6791
 P.O. Box 769
 H-6701, Hungary,
 Telephone: 36/62-325-955
 Telefax: 36/62-325-966

Changes in machine design or specifications are a result of continual machine improvement and New England Machinery, Inc. reserves the right to change specifications without prior notice.