



Adjustable Bottle Unscrambler Model: NEHA

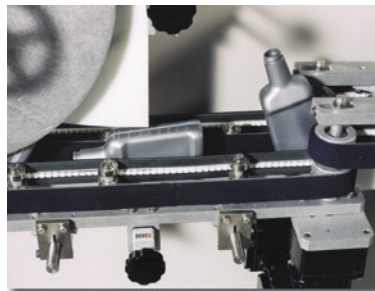


NEHA Unscrambler with optional Hopper/Elevator

From Bulk Supply To Line Conveyor...

The Model NEHA Adjustable Unscrambler is designed for unscrambling non-tapered plastic bottles at speeds to meet nearly any customer requirement. Based on the time-proven, New England Machinery design concept, the Model NEHA is the industry standard for high throughput, coupled with easy operation and gentle bottle handling.

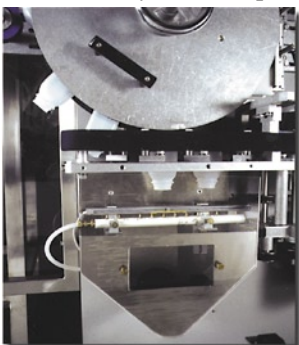
Versatility - The NEHA unscrambles a broad range of container sizes. By selecting the right configuration and bowl size, the NEHA can easily achieve speeds of up to 450 containers per minute.



Soft belt transfer with easy change over system

Quick Changeover - The NEHA allows a single operator to perform complete size changeover in fifteen minutes or less. The open design of the NEHA offers easy access. Adjustability minimizes the number of change parts required.

Gentle Container Handling - This feature includes the patented New England soft belt transfer system. Containers are fully protected throughout the workflow minimizing the possibility of scuffing and damage. Even decorated bottles are handled gently.



Optional container air rinsing

Ease of Operation - The NEHA operates on-demand without operator intervention. The system automatically responds to changes in container supply and demand. Optional multi-speed drives are available to optimize container flow and throughput.

NEHA Snapshot:

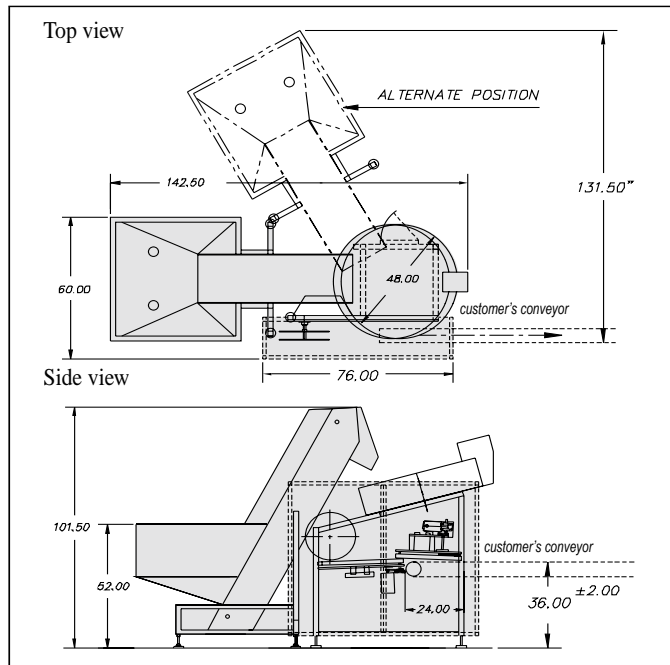
- Unscrambles straight-walled and other non-tapered containers
- Speeds of up to 450 containers per minute
- Economical speed to cost performance ratio
- Compact footprint (24 sq. ft. for NEHA-36 model)
- Complete size changeovers in 15 minutes or less
- Open design for easy maintenance
- Fully automatic operation with back-log photo-eye
- Automatic discharge to standard customer-supplied conveyor
- VFD motor controls
- Allen-Bradley® PLC
- Low air safety shutdown
- Stainless steel and aluminum construction.
- Available in 36", 48" and 60" sorting bowls
- Soft start and stop features
- Integrated electrical panel with machine base frame
- Electromechanical safety interlocks
- Jog switch with 10 ft. cord
- Clear acrylic hinged guarding doors
- Adjustable discharge height 36" +/- 2"
- UL listed components

New England Machinery, Inc.

Innovators In Container Handling Systems



NEHA Specifications

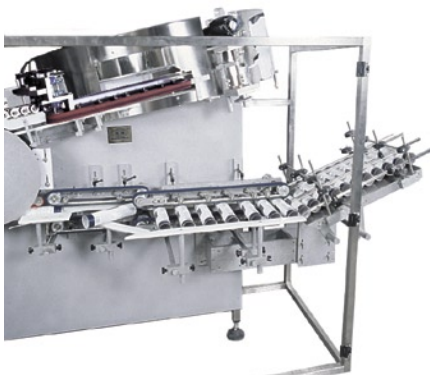


SPECIFICATIONS

Power: 220V/1 phase/60Hz/30 amps
 Rating: NEMA-12
 Air - Standard: 5 cfm 80 psi
 Air - With Optional Air Cleaner: 10-15 cfm 80 psi

CONTAINER SIZE RANGE

- 5/8" diameter to 3-1/2" diameter
- Heights up to 10"
- Extended range option available for containers larger than 3-1/2" diameter and 10" high



Alternate Model with Roll-Ramp Discharge

NEHA Unscramblers can be configured to any customer specification, upon request.

New England Machinery, Inc.

2820 62nd Ave East, Bradenton, FL 34203 U.S.A.

941/755-5550 Fax: 941/751-6281

www.neminc.com

E-mail: info@neminc.com

Optional Equipment

- Anodized aluminum
- Built-in ionized air container rinser
- Horizontal roll-ramp container discharge
- Minimum tools changeover feature
- Pharmaceutical & food grade finishes
- NEMA-4 (wash down) or NEMA-7 (explosion proof) electrical
- Dust covers for sorting bowl or hopper/elevator
- 50 Hz or other special power requirements
- Interfacing to customer PC and/or PLC for centralized control
- Light post for machine status and low hopper level indicator
- Cluster central lubrication
- PLC upgrades
- Left-hand discharge
- Containers per minute counter
- Transformer for different input voltages
- Polycarbonate guarding
- Noise reduction package