

# MULTIPRESS® HYDRAULIC PRESSES—SERIES W6A

## 1, 2 and 3 Ton Capacities

Series W6A bench style C-frame presses are engineered to meet Multipress' interpretation of ANSI B11.2-1995 specifications. These presses are extremely flexible, with fully adjustable stroke and force controls that adapt to a wide range of applications and tooling set-ups.

### Standard Features

- Dual pushbuttons - timer reversal
- Pressure regen (fast approach until work is contacted)
- Programmable Logic Controller with 16 I/O
- NEMA-4 enclosure – no disconnect
- Standard NFPA cylinder
- Double gear pump mounted out of the oil for ease of service
- Quality control lower limit switch (allows operator to release buttons and work will be completed)
- Selector switch for jog up, jog down, run
- U-slot in bed
- Open motor
- 230/460 volts, 3 phase, 60 Hz
- 115 volts, single phase, 60 Hz

### Optional Features and Accessories

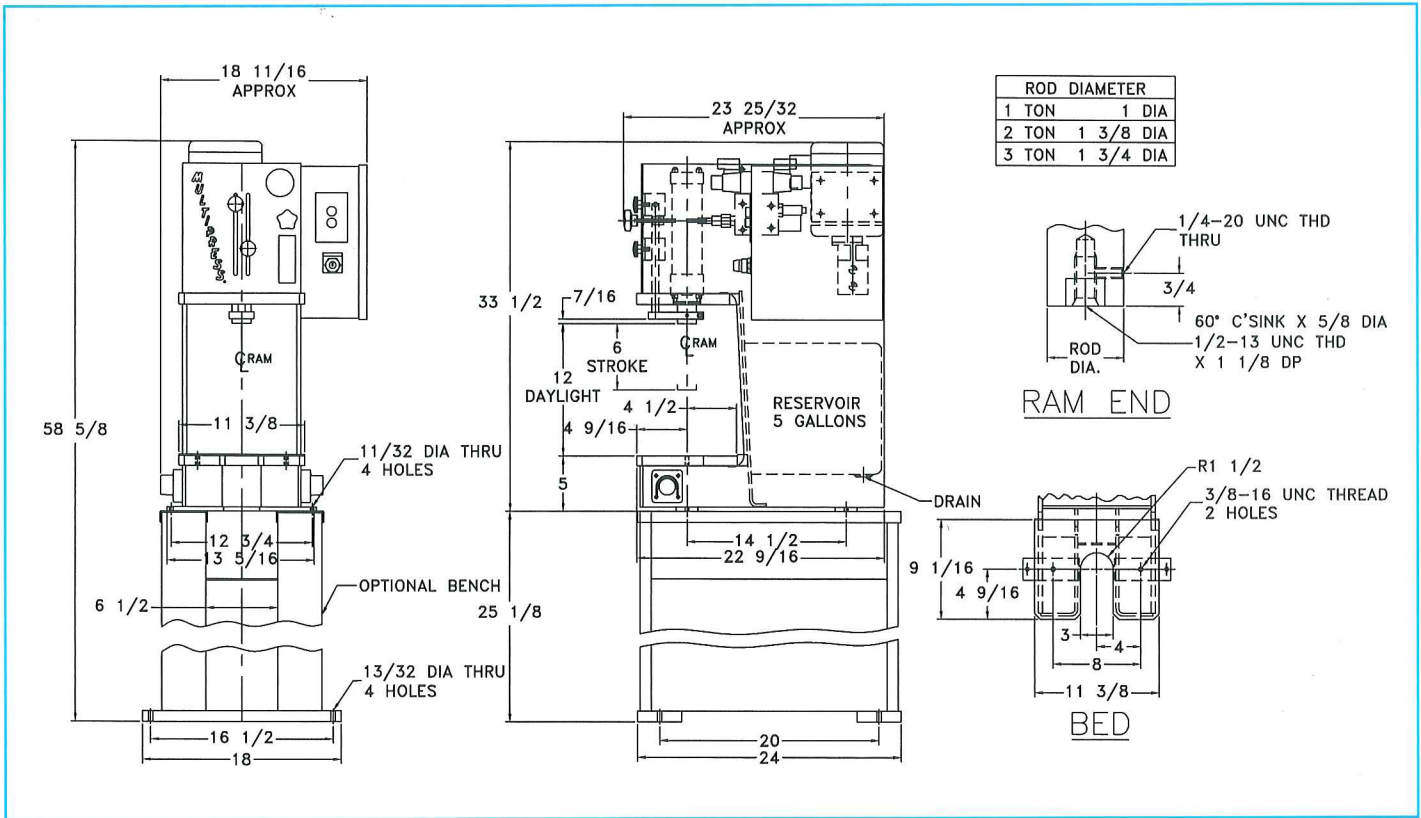
- Mounting bench
- Oil-to-water cooling coils
- Air-to-oil cooler
- Special dimensions – daylight, stroke, throat
- Index tables
- Light curtains or other guards
- Positive cylinder stop assembly
- Ergonomic palm buttons
- Fused disconnect, NEMA-12 enclosure
- Bolster plates



W6A MODELS	W6A-1	W6A-1P*	W6A-2	W6A-2P*	W6A-3	W6A-3P*
Maximum Tonnage	1	1	2	2	3	3
Daylight (In)	12	12	12	12	12	12
Stroke (In)	6	6	6	6	6	6
Advance Speed (IPM)	600	700	455	540	280	320
Press Speed (IPM)	120	140	75	80	50	50
Return Speed (IPM)	480	700	410	420	275	275
Pump (GPM)	2/1	2/1	2/1	2/1	2/1	2/1
Motor HP @1800 RPM	3/4	3/4	3/4	3/4	3/4	3/4
Cylinder:						
Bore Diameter (In)	1.5	1.5	2	2	2.5	2.5
Rod Diameter (In)	1	1	1.375	1.375	1.750	1.750
Positive Stop Rod Dia. (In)	-	.625	-	.625	-	.625
Maximum Pressure (PSI)	1131	1369	1273	1411	1222	1303
Minimum Pressure (PSI)	400	400	400	400	400	400
Reservoir Capacity (Gal)	5.5	5.5	5.5	5.5	5.5	5.5
Approx. Shipping Wt. (Lbs)	350	375	350	375	350	375

\* P at the end of the model number represents Positive Stop.

## SERIES W6A PRESS DIMENSIONS



## ACCESSORIES

### Mounting Bench



Standard bed to floor distance with above benches is 30".

### Index Table Presses

Index tables are an important option furnished with numerous Multipresses over the years. Multipress offers many commercially available 2, 4, 6, 8, 12, and 24 station indexers. They are fast, accurate, and will operate with heavy tooling and parts weight. The proper indexer for your application is available.



# MULTIPRESS®

**QPI MULTIPRESS, INC**

2222 S. Third Street • Columbus, Ohio 43207  
Telephone (614) 228-0185 • Fax (614) 228-2358  
www.multipress.com

Packaging - Processing  
**Bid on Equipment**  
1-847-683-7720  
www.bid-on-equipment.com