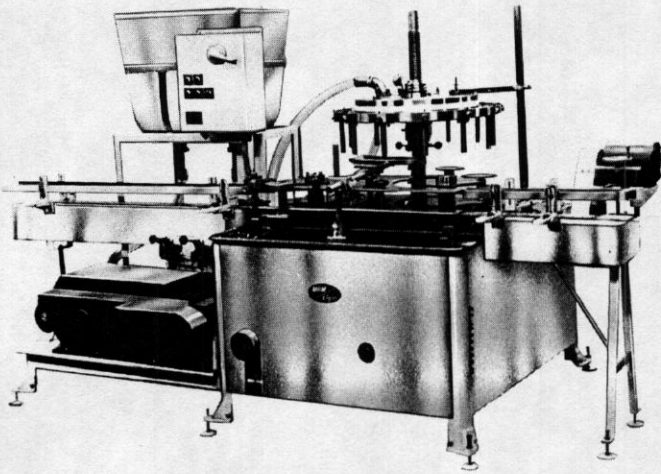


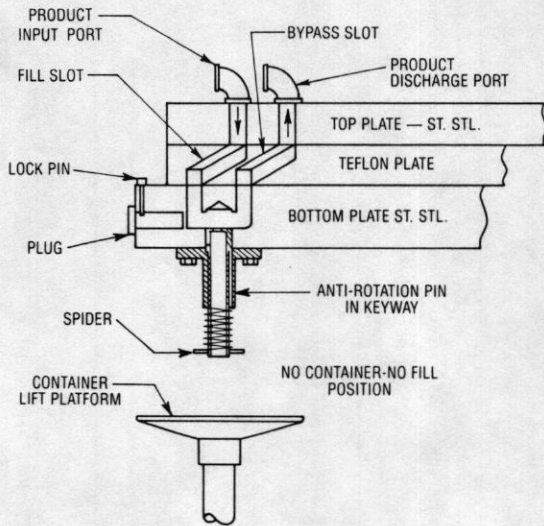
**MRM/Elgin**

# VERSA-FIL



Model VF-LF, 12 spout with product supply tank and two stage fill

## VERSA-FIL NO CONTAINER NO FILL RECIRCULATING HEAD (OPTIONAL FEATURE)



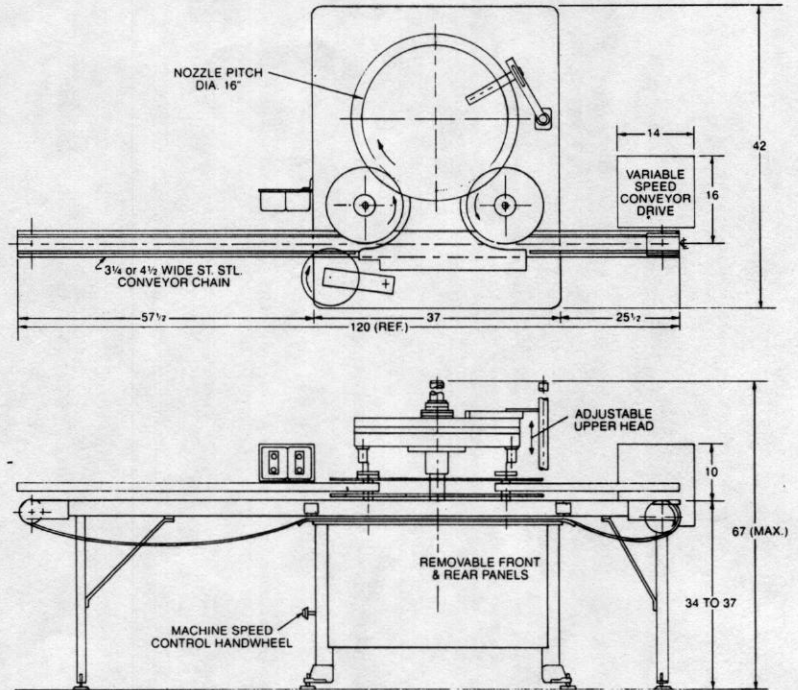
### PRINCIPAL OF OPERATION

As the container is lifted on the container lift platform, the neck of the container engages the spider and the sleeve of the nozzle is pushed up, blocking the bypass slot and allowing product to flow from the fill slot through the nozzle and into the container. When no container is under the nozzle, the spring keeps the nozzle sleeve down, and product is simply circulated through the teflon disc and bottom plate going from the fill slot to the bypass slot, which is cut parallel to the fill slot in the teflon disc.

## Packaging - Processing Bid on Equipment

1-847-683-7720

www.bid-on-equipment.com



### PARTIAL LIST OF USERS

Atlantic & Pacific Tea. Co.	E.B. Evans	Mennen Co.
Alcon Labs	Faberge	Oxford Pickle
Avon Products	Glamorene	Permacel
Bama Foods	Globe Products	Petroleum Solvents
G. Barr Company	Gregg Foods	Procter and Gamble
Barrington Foods	Green Bay Foods	Samuel Cabot
Don Baxter, Inc.	Halben Foods	Sea and Ski
Blue Plate Foods	H.J. Heinz	Simonize
Burroughs Welcome	Andrew Jergens	J. Hungerford Smith
Capitol Packaging	Johnson Products	Stanley Home Products
Carter's Ink	Kartridg-Pak	W.F. Straub
Castrol	Kolmar Labs	Texaco
Clairel	Kroger	Veri-Tone
Continental Coffee	LaChoy	Visual Graphics
Dap, Inc.	Leavitt Corp.	Vita Goods
Demert's	Linwo Industries	Viva Macaroni
Estee Lauder	McLaren's Foods Ltd.	Western Dressings

### PARTIAL LIST OF PRODUCTS

Adhesives	Dessert Toppings	Peanut Butter
Aerosol Concentrates	Edible Oil	Pharmaceutical Products
Applesauce	Gravy Sauce	Pie Filling
Automotive Chemicals	Hair Preparations	Relish
Baby Oil	Honey	Salad Dressing
Barbecue Sauce	Horseradish	(single & multiple stage)
Cheese Spread	Jams, Jellies,	Spaghetti Sauce
Chili	Preserves	Spare Rib Sauce
Cocktail Sauce	Lubricating Oil	Suntan Oil
Contact Lens Cleaner	Mayonnaise	Syrups
Cough Medicine	Meat Paste	Tomato Paste
Creams & Lotions	Mustard	

Machine specifications, illustrated or described on this brochure, subject to change without notice.



**MRM/Elgin Packaging Machinery  
Domain Industries, Inc.**

New Richmond, WI 54017 • 715/246-6511

FSCP V 5M 4/77 Litho in USA

# How the VERSA-FIL operates

This fully automatic rotary continuous motion Filler handles containers smoothly and efficiently. The machine employs a selector star (or optional spiral timing screw) to time containers into an infeed star wheel. Containers are then transferred onto a rotating plate with lift platforms directly under the filling nozzles. Containers are elevated, filled, then transferred by a discharge star wheel back onto the automatic conveyor.

High-precision positive displacement pumps feed product into the filling slots of the metering plate, and then through the nozzle into a container as it passes under the slot.

Independent variable speed machine and pump drives insure filling accuracies of  $\pm 1/2$  of 1%.

Fill quantities are rapidly adjusted in a range from 5 cc. to imperial gallons. The adjustment is accomplished, via a calibrated control dial, simply by varying the speed of the product supply pumps in relation to the machine speed or by leaving the pump speed constant and changing the machine speed.

Lift platforms provide for a bottom-up fill up to 5" and eliminate air entrapment or product disturbance.

The machine is equipped with a 10 ft. automatic intake and discharge conveyor with stainless steel or Delrin chain. This conveyor is normally driven by an independent vari-speed drive, but can be coupled to the conveyor of a Capping Machine, if desired.

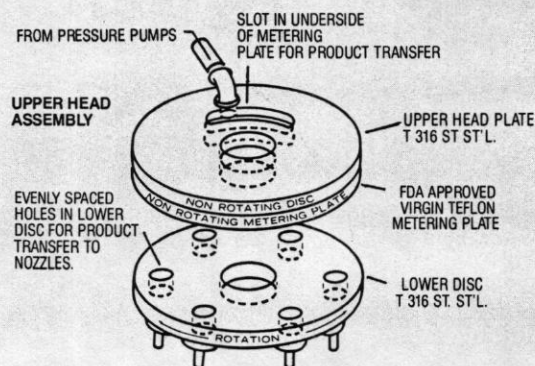
## VERSA-FIL FEATURES:

- Positive Displacement fill utilizing a Time & Pressure principle. Accuracy limits within  $\pm 1/2$  of 1%.
- Sanitary Construction.
- Nozzles are rapidly removable, upper head and pumps are quickly disassembled for ease of cleaning and sterilization.
- No sealing of containers, no overflow, no product recirculation.
- Rapid changeover between container sizes - 15 minutes or less.
- Designed to fill rigid and non-rigid containers such as glass, metal, plastic, etc.
- Utilizes sanitary high-precision positive displacement pumps for product supply.
- Centralized lubrication.
- All drives are enclosed - no exposed belts or pulleys.
- Built-in safety devices to shut off the machine in the event of a jam. Lift platforms are equipped with safety devices to prevent breakage or damage to containers or nozzles.
- Suitable for high temperature filling.
- Models to handle a wide range of products and containers.

- Ruggedly constructed, simple to operate and maintain, capable of delivering many years of trouble-free performance.
- Stainless steel safety guard package.

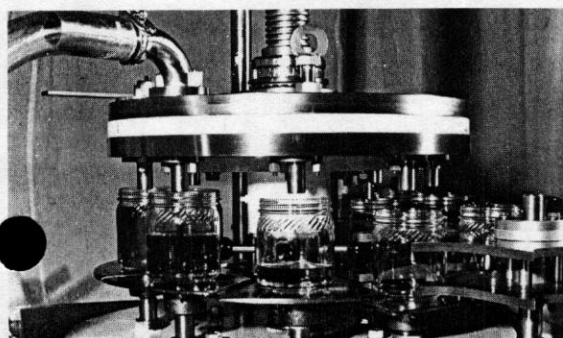
## OPTIONS AND DESIGNS FOR SPECIAL APPLICATIONS

- Spiral timing screw in lieu of selector star.
- Multi-stage fill for two or more products in one container.
- Nitrogen purge.
- Vacuum suck back insures no drip.
- Supply tank.
- Stainless steel structural parts, and other components in the product zone.
- Tangential discharge, internal star, large discharge star for high speed operation.
- Special materials for metering plates.
- Vacuum fill with overflow.
- No container, no fill recirculating head.
- Recirculating valves on head for products that tend to separate.

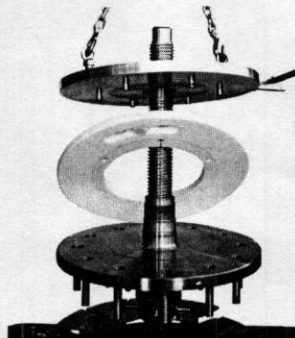


## FILLING PRINCIPLE:

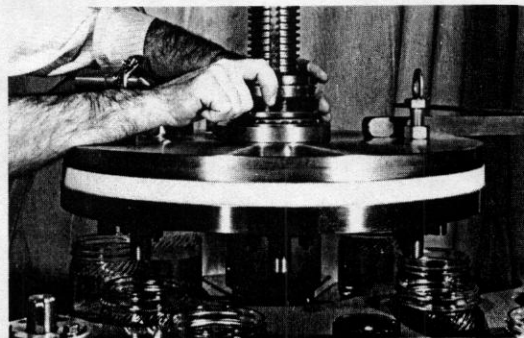
1. Product passes from pressure pumps into slots of stationary metering plate.
2. Lower disc & nozzles rotate as an assembly under the non-rotating upper disc & metering plate.
3. Holes in the lower disc pass under the slots in the metering plate and transfer product to the filling nozzles, the quantity of which depends on:
  - A. The quantity of the product being delivered from the pressure pumps, a function of the pump size & speed.
  - B. The time that the holes are under the slot, a function of the machine speed.



CLOSE UP ON FILLING OPERATION

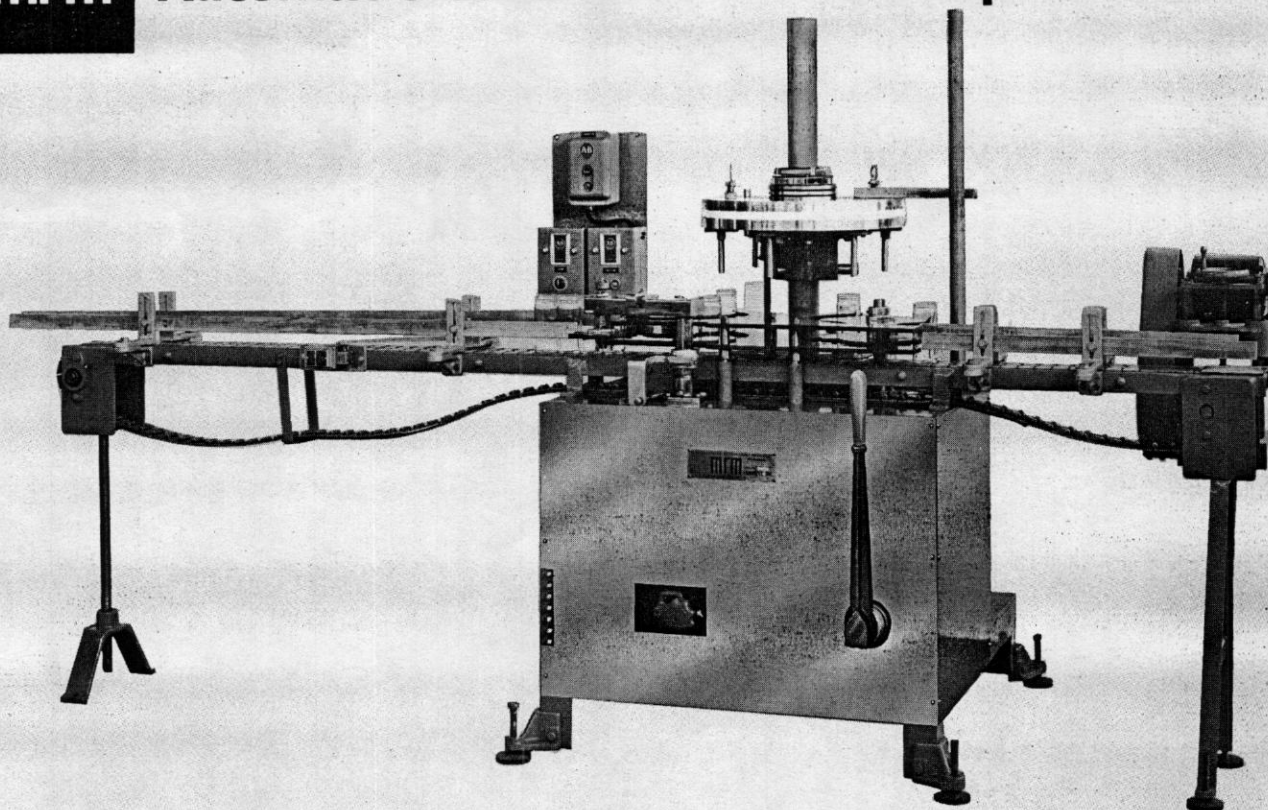


RAPID ADJUSTMENT



CENTRA

## FEATUR



**PRODUCTION PER MINUTE (BASED ON WATER)**

Model	No. of Spouts	Fractional Ozs. to 10 Ozs.	10 Ozs. to 16 Ozs.	Gallons
Versa-Fil	6	120	80	20-50
Versa-Fil	8	175	120	
Versa-Fil	12	300	150	100

Machine Motor: 3/4 HP Pump Motor: 3/4 HP Conveyor Motor: 1/3 HP

Dimensions: 116 $\frac{1}{4}$ " Length x 65 $\frac{3}{4}$ " Height x 45" Width

**WE INVITE YOUR INQUIRY** regarding special requirements or use of *Versa-Fil* with present production facilities. Our Application Engineering staff is available for consultation and will be pleased to assist in providing special or modified versions of *Versa-Fil* for the handling of particular products in any variety of containers.

*Packaging – Processing*

**Bid on Equipment**

1-847-683-7720

[www.bid-on-equipment.com](http://www.bid-on-equipment.com)