

Packaging - Processing
Bid on Equipment

1-847-683-7720
 www.bid-on-equipment.com

LIGHTNIN Labmaster™

LABMASTER II MODEL TS 2510*

Quantify Mixing Parameters For You and Your Computer

- RS-232 port permits feeding data to your lab computer
- Speed Display 20-1800 RPM
- Process Watts Display
- Timer Display (counts up or down)
- Gallons Per Minute Readout for three different impellers (Impellers are provided)
- Optional Temperature Probe-Readouts in °F or °C
- User defined acceleration/deceleration rates (min. default set by factory)
- Analog input port (0-5V) for peripheral data collection
- Thru-Shaft Design for infinitely variable impeller position
- Direct Drive
- Quick-Disconnect Chuck
- Overload Indicator and Alarm
- 1/10 HP, 115V, 50/60 Hz
- Light-weight Chemically Resistant, Composite Housing
- Universal Mounting Clamp (use with ring stand or tank rim)
- Tactile and audible feedback, sealed membrane control panel
- Fuse Protection for severe overload
- Minor overload protection via automatic speed level control

*Patent Pending



UNIVERSAL CLAMP

(Add U to mixer model number when ordering.) Permits clamping mixer to container wall or ring stand as needed.



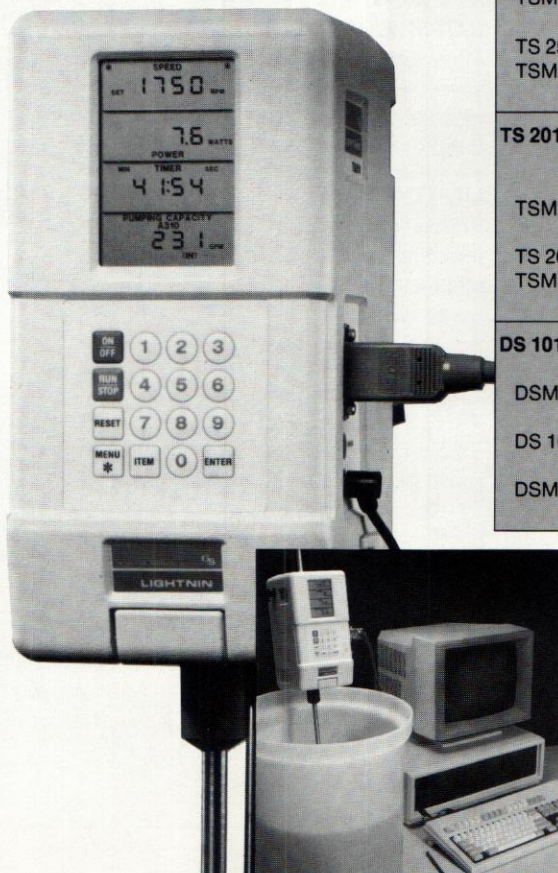
RING STAND CLAMP

Heavy duty, recommended for all LabMaster models.

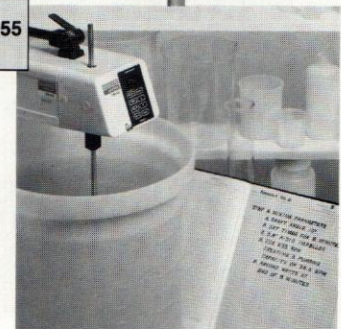
LABMASTER MODEL TSR 1516

This 1/15 HP high torque model has a right angle drive and variable speed. Everything is standard.

- LED readouts for RPM, watts and gallons per minute (pumping capacity) for three different impellers
- Timer (Counts down only)
- Membrane Switch Panel
- Overload Indicator and Alarm
- Shaft Angle Positioning with Inclinometer (0-45°)
- Thru-Shaft for infinitely variable turbine position
- Fuse Protection
- Quick-Disconnect Chuck Design
- Tube Suspension Mounting (Tank Clamp Model also available)
- 50-500 RPM
- 3 different impellers (A-310, A-100, R-100)
- Cat. No. 809403
- Cat. No. 829398 (TSR 1516 TM)



Model No.	Description	Cat. No.
TS 2510	as described above	832048
TSM 2510	as described above with metric displays	832050
TS 2520	as above with 220V, 50/60 Hz	832049
TSM 2520	as above with 220V, 50/60 Hz and metric readouts	832051
TS 2010	as above without temperature probe, RS-232 port and analog (0-5V) input port	832044
TSM 2010	Same as 2010 with metric readouts	832046
TS 2020	Same as 2010 with 220V, 50/60 Hz	832045
TSM 2020	Same as 2010 with 220V, 50/60 Hz and metric readouts	832047
DS 1010	1/30 HP No thru-shaft. No RS-232 port. No analog input port	832052
DSM 1010	Same as DS 1010 with metric readouts	832054
DS 1020	Same as DS 1010 with 220V, 50/60 Hz	832053
DSM 1020	Same as DS 1020 with metric readouts	832055



Precision Mixing Instruments

LABMASTER MODEL MSV-1500

1/15 HP with Variable Speed Remote Control
 The Model MSV-1500 is suitable for use in enclosed environments such as vapor hoods, with variable speed control positioned conveniently on the outside.

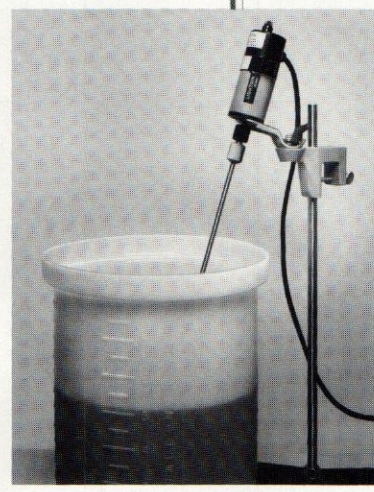
- Remote Variable Speed Control
- 1/15 HP-Direct Drive
- Hand Chuck
- Thru-Shaft Design for infinitely variable turbine position
- Fuse Protection
- Yoke Mounting or U Mount
- A-310 Impeller
- On/Off indicator light
- 180-2300 RPM
- Cat. No. 869000
- Cat. No. 869001 (MSV 1500 U as pictured)



LABMASTER MODEL MS 3000

1/30 HP Fixed Speed with Direct Drive. Standard Features include:

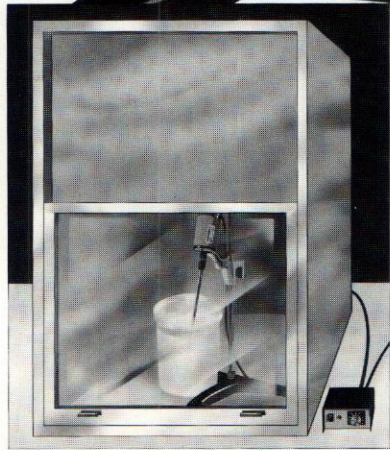
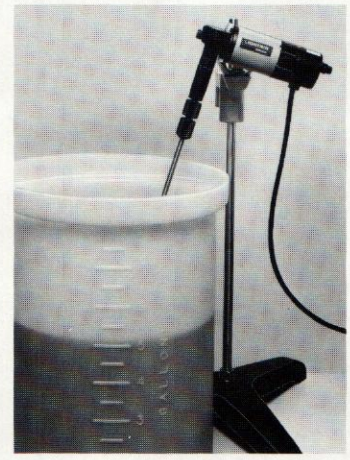
- Hand Chuck
- Bracket Clamp Attachment
- Fuse Protection
- A-310 Impeller
- On/Off indicator light
- 1800 RPM
- Cat. No. 809408
- Cat. No. 830162 (Complete mixer with universal clamp - Model MS 3000 U)



LABMASTER MODEL MSR 3002

1/30 HP High Torque Stirrer. Fixed Speed with Right Angle Drive. Standard features include:

- Hand Chuck
- Bracket Clamp Attachment
- Fuse Protection
- On/Off indicator light
- A-310 Impeller
- 500 RPM
- Cat. No. 829249
- Cat. No. 830163 (Complete mixer with universal clamp - Model MSR 3002 U)



Pilot Plant Kit

The perfect accessory kit for all pilot plants. It includes:

- LIGHTNIN Pilot Plant Manual
- 2 extra shafts
- Pyrex Shaft and Impeller
- A-310 Impellers (2 sizes)
- R-100 Impeller
- R-500 Impeller
- A-200 Impeller

- A-100 Impeller
- Calibrated colored beads for visual mixing/flow indication.
- Plus — the final word on mixing — "Fluid Mixing Technology" — a book by Dr. James Oldshue

**Packaging - Processing
 Bid on Equipment**

1-847-683-7720
 www.bid-on-equipment.com