

LIGHTNIN fixed-mounts for open tanks

XJQ & XDQ Series

DRIVES TO MATCH THE WORK.

Gear drive. For high viscosity mixing. For low viscosity work with large batches or where high flow with low shear is desirable. Single reduction helical gears are exceptionally compact, quiet running and carry high loads.

DIRECT DRIVE.



For small batches or wherever high fluid motion and high shear are needed. Motor and shaft are coupled directly with pilot and keyway for accurate alignment and positive connection.

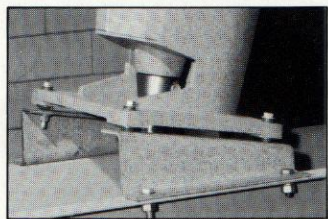
INTEGRAL ALIGNMENT.

One-piece housing and mixer support assures exact alignment, great mechanical strength.

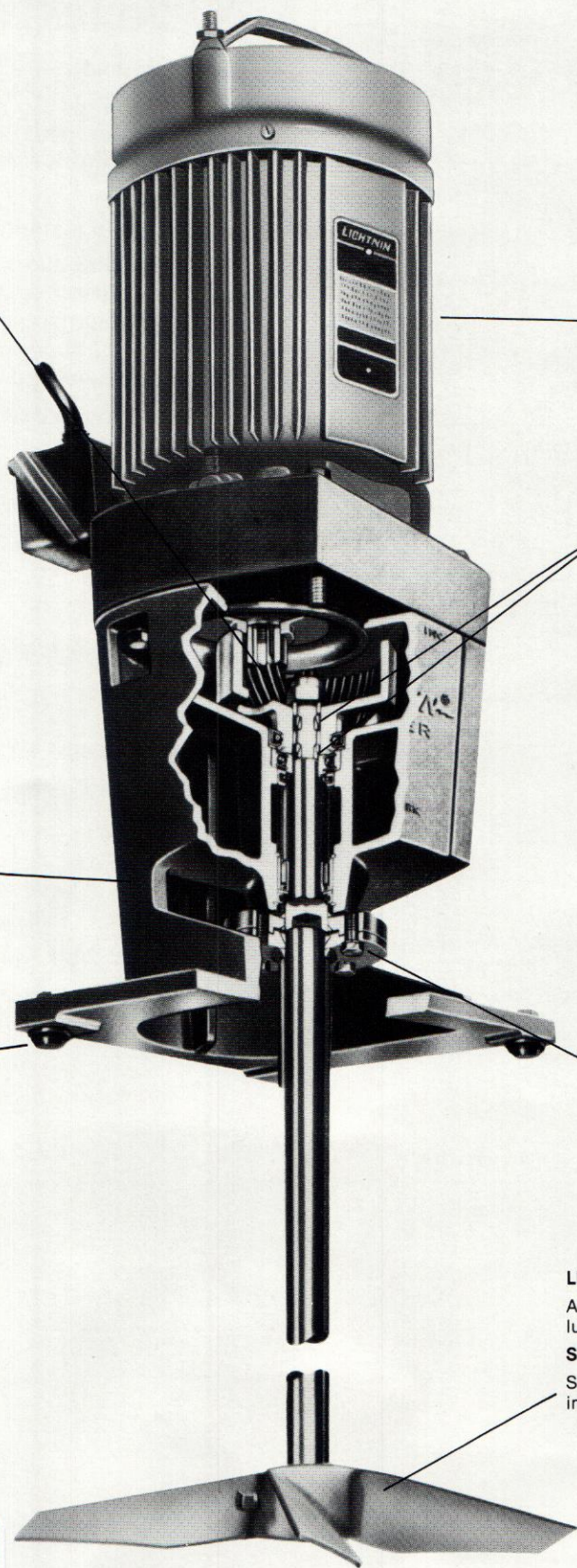
VIBRATION DAMPENERS.

Shock mounts protect drive against high fluid forces to prolong mixer life.

OPTIONAL RISERS.



Spacers give the correct angular, off-center mixer position for most applications, achieving optimum mixing without need for tank baffles.



PROTECTION AGAINST DUST, FUMES AND MOISTURE.

Standard DURA-MIX motor is totally enclosed or explosion-proof. See page 24. Air Motors also available.

GEAR PROTECTION

Exclusive grip springs protect against shock loads.

POSITIVE CHUCK.



Same as on clamp mount portables. Exclusive Lightnin reverse tapered flat assures that shaft cannot drop out unless intentionally released.

Fixed mount units supplied with shaft safety cover.

Rigid coupling. Adds stability for long shafts. Shaft comes with coupling welded on.

LIFETIME LUBRICATED.

All shaft, motor bearings and gears are lifetime lubricated. No need to change lubricant.

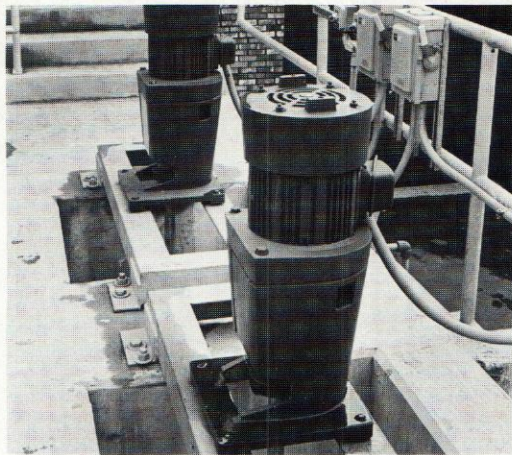
STANDARD A310 IMPELLER.

See page 25 for optional special purpose impellers.

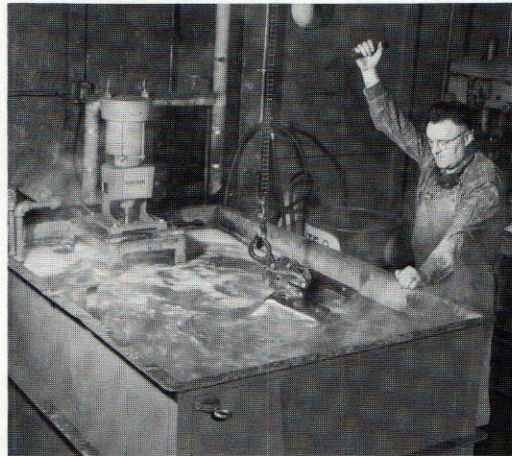
Packaging - Processing
Bid on Equipment

1-847-683-7720

www.bid-on-equipment.com



In wastewater treatment, direct driven fixed mounts provide rapid chemical dispersion and dissolving, while gear drives with their low shear aid in polymer make-up and flocculation.



Gear driven fixed mounts deliver high flow for uniform quenching and to aid cleaning of metal parts.

HIGH CAPACITY MIXERS.

For large tanks and continuous processes, fixed mounted mixers provide extra long shafts and the stability of permanent installation.

Gear drives deliver high flow with low shear, and are preferred, for example, in such applications as food processing and milk pasteurization and storage. Direct drives provide high fluid motion and shear for such work as dissolving sugar and dispersing paint pigment.

Fixed mounts offer most of the same features as standard portables, and then some. Because of the wider options, you are invited to call your Lightnin sales engineer early to assure an optimum match of the mixer to the work.

Mixer Housing — Aluminum*

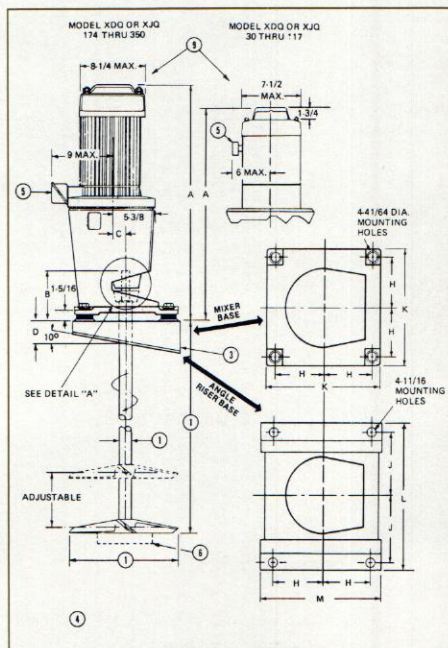
Chuck or Rigid Coupling — Electroless nickel plated steel or steel rigid coupling. Both are also available in 316SS as an option.

Shaft and Impellers — Steel and 316 stainless. Also available in any wrought commercial alloys and with coverings of such materials as rubber, PVC, polymers and fluorocarbons.

Paint — Styrenated alkyd enamel, 400 hours minimum salt spray resistance.

*Other materials available

FIXED MOUNT



NOTES:

- ① DEPENDENT ON APPLICATION
- ② ALSO AVAILABLE WITH ELECTRONIC VARIABLE SPEED DRIVE
- ③ ANGLE RISERS ARE FURNISHED ONLY WHEN SPECIFIED
- ④ WEIGHT WILL VARY WITH MOTOR ENCLOSURE AND SHAFT AND IMPELLER SELECTION
- ⑤ DIMENSIONS ARE MAXIMUM - WILL VARY WITH MOTOR ENCLOSURE CONDUIT BOX NOT INCLUDED WITH EXPLOSION PROOF MOTOR
- ⑥ LOWER IMPELLER IS EQUIPPED WITH STABILIZING RING WHEN REQUIRED
- ⑦ ALL DIMENSIONS ARE IN INCHES
- ⑧ DIMENSIONS ARE FOR REFERENCE ONLY UNLESS CERTIFIED
- ⑨ HANDLES ARE SHOWN 90° OUT OF POSITION

HIGH FLOW, GEAR DRIVEN FIXED MOUNTS FOR OPEN TANKS

Model	Appr Wgt	B			C	D	E	F	H	J	K	L	M
		A	Std	With Cplg									
XJQ30	63	23 1/4	6 3/8	2 3/4	1 3/8	2 1/4	3 7/8	3/8	4	5 3/8	10	12 1/4	10
XJQ43	66	23 1/4	6 3/8	2 3/4	1 3/8	2 1/4	3 7/8	3/8	4	5 3/8	10	12 1/4	10
XJQ65	70	24 5/8	7	2 3/8	1 5/8	2 1/4	4 3/4	1/2	4 1/2	5 7/8	11	13 1/4	11
XJQ87	83	24 5/8	7	2 3/8	1 5/8	2 1/4	4 3/4	1/2	4 1/2	5 7/8	11	13 1/4	11
XJQ117	89	25 3/8	7	2 3/8	1 5/8	2 1/4	4 3/4	1/2	4 1/2	5 7/8	11	13 1/4	11
XJQ174	155	28 3/4	6 3/4	3	1 7/8	3	4 3/4	1/2	5 1/2	7 5/8	13	16 3/4	13 1/2
XJQ230	200	30 1/2	6 3/4	3	1 7/8	3	4 3/4	1/2	5 1/2	7 5/8	13	16 3/4	13 1/2
XJQ350	225	30 1/2	6 3/4	3	1 7/8	3	4 3/4	1/2	5 1/2	7 5/8	13	16 3/4	13 1/2

HIGH SHEAR, DIRECT DRIVEN FIXED MOUNTS FOR OPEN TANKS

Model	Appr Wgt	B			C	D	E	F	H	J	K	L	M
		A	Std	With Cplg									
XDQ30	51	21 1/2	6 1/2	3 1/8	0	2 1/4	3 7/8	3/8	4	5 3/8	10	12 1/4	10
XDQ43	56	21 1/2	6 1/2	3 1/8	0	2 1/4	3 7/8	3/8	4	5 3/8	10	12 1/4	10
XDQ87	60	21 3/4	6 1/2	3 1/8	0	2 1/4	3 7/8	3/8	4	5 3/8	10	12 1/4	10
XDQ117	70	22 1/2	6 1/2	3 1/8	0	2 1/4	3 7/8	3/8	4	5 3/8	10	12 1/4	10
XDQ174	135	24 1/4	6 3/4	3 1/8	0	3	4 3/4	1/2	5 1/2	7 5/8	13	16 3/4	13 1/2
XDQ230	140	26	6 3/4	3 1/8	0	3	4 3/4	1/2	5 1/2	7 5/8	13	16 3/4	13 1/2
XDQ350	155	26	6 3/4	3 1/8	0	3	4 3/4	1/2	5 1/2	7 5/8	13	16 3/4	13 1/2

Packaging - Processing
Bid on Equipment

1-847-683-7720

www.bid-on-equipment.com