

# LIGHTNIN fixed mounts for closed tanks

## XJC & XJDS Series XDC & XDDS Series

### LIFETIME LUBRICATED.

All shaft, motor bearings, and gears are lifetime lubricated. No need to change lubricant.

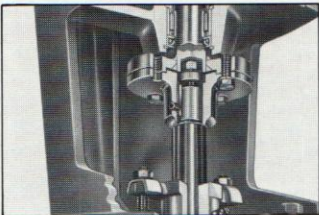
### MOTORS AND DRIVES TO MATCH THE WORK.

Drive can be through single reduction helical gears as shown. Or it can be direct. Drive design and motors are the same proven performers used on other fixed mounts and standard portables.

### POSITIVE CHUCK.

Grip bears against tapered flat on mixer shaft. Unless intentionally released, shaft cannot drop out.

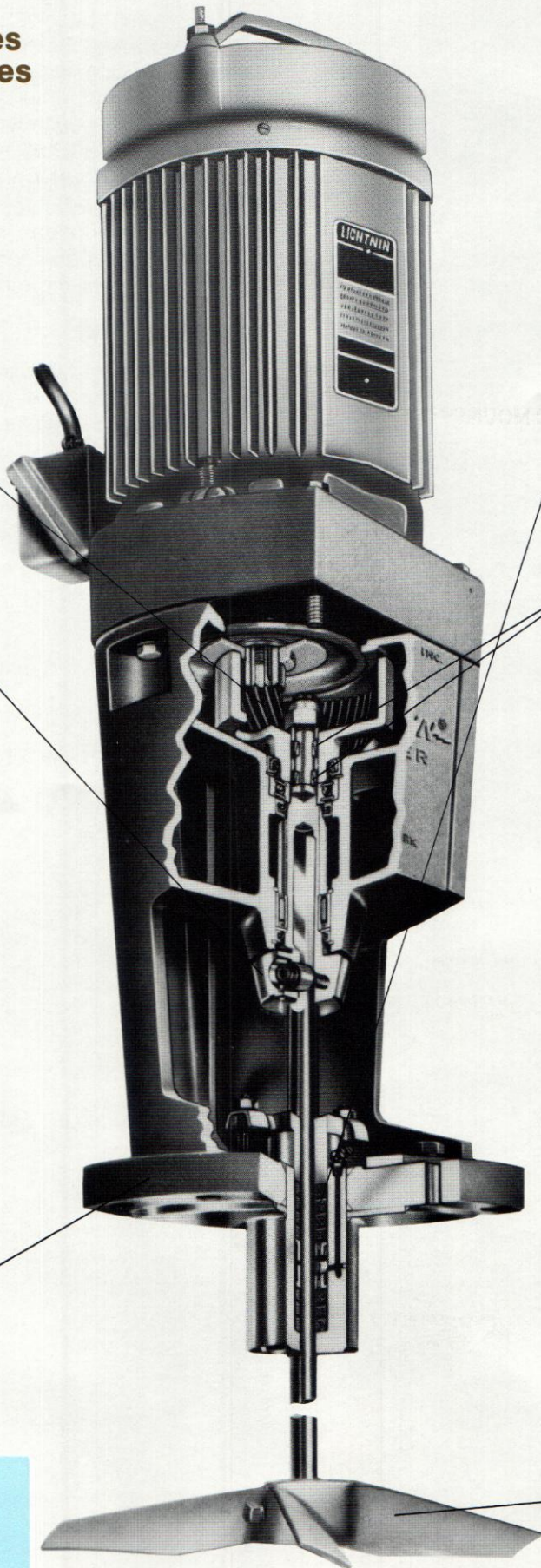
### REMOVABLE COUPLING.



Adds stability for long overhung shafts. Flange is rabbeted and keyed to assure positive alignment.

### STANDARD OR SPECIAL FLANGES.

Standard ASA 150# series flanges are supplied in solid steel or in steel faced with 316 stainless for corrosion resistance. Other materials and special flanges can be furnished on request to mate with larger openings, or adaptors provided to fit smaller openings.



### SEAL OR STUFFING BOXES TO MATCH THE PROCESS.

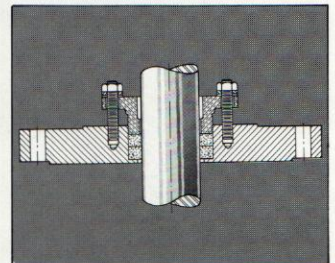
Standard 150 psig stuffing box. Uses 7 rings of die-molded packing with separators, a lubricant distributing GFT\* lantern ring, grease fitting, and adjustable 316SS\* packing gland. Where needed, we can adapt for pressures to 300 psig. Cooling or heating jacket, lubricant trap and leak detector available as accessories.

\*Other materials available to suit process.

### GEAR PROTECTION

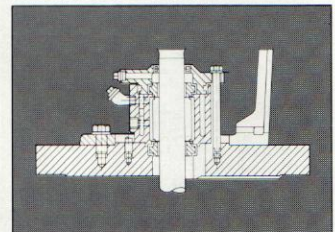
Exclusive grip springs protect against shock loads.

### OPTIONAL 25 PSIG STUFFING BOX.



A simpler design for lower pressures. Uses 2 rings of die-molded packing and a packing gland.

### MECHANICAL SEAL.



Provides most positive sealing. Minimizes maintenance.

### HIGH EFFICIENCY A310 IMPELLER.

See page 25 for optional, special purpose impellers.

FIXED MOUNT

**Packaging - Processing  
Bid on Equipment**

1-847-683-7720

www.bid-on-equipment.com

## MATCHED TO YOUR TANK.

The tank and the process determine the mixer, and your Lightnin representative has all the ways to match our mixer to your pressurized vessel.

After all, we guarantee process results, so we'll make sure we specify the optimum fixed mount for your tank. Call us early.

### HIGH FLOW, GEAR DRIVEN FIXED MOUNTS FOR CLOSED TANKS

Model	Mixer Wgt Lbs	A	B		C	D	E
			With Chuck	With Cplg			
XJC-30	105	26 <sup>3</sup> / <sub>4</sub>	9 <sup>1</sup> / <sub>2</sub>	5 <sup>7</sup> / <sub>8</sub>	1 <sup>3</sup> / <sub>8</sub>	3 <sup>7</sup> / <sub>8</sub>	3 <sup>3</sup> / <sub>8</sub>
XJC-43	120	26 <sup>3</sup> / <sub>4</sub>	9 <sup>1</sup> / <sub>2</sub>	5 <sup>7</sup> / <sub>8</sub>	1 <sup>3</sup> / <sub>8</sub>	3 <sup>7</sup> / <sub>8</sub>	3 <sup>3</sup> / <sub>8</sub>
XJC-65	170	28	10 <sup>1</sup> / <sub>8</sub>	5 <sup>1</sup> / <sub>2</sub>	1 <sup>5</sup> / <sub>8</sub>	4 <sup>3</sup> / <sub>4</sub>	1 <sup>1</sup> / <sub>2</sub>
XJC-87	180	28	10 <sup>1</sup> / <sub>8</sub>	5 <sup>1</sup> / <sub>2</sub>	1 <sup>5</sup> / <sub>8</sub>	4 <sup>3</sup> / <sub>4</sub>	1 <sup>1</sup> / <sub>2</sub>
XJC-117	190	28 <sup>3</sup> / <sub>4</sub>	10 <sup>1</sup> / <sub>8</sub>	5 <sup>1</sup> / <sub>2</sub>	1 <sup>5</sup> / <sub>8</sub>	4 <sup>3</sup> / <sub>4</sub>	1 <sup>1</sup> / <sub>2</sub>
XJC-174	215	32 <sup>1</sup> / <sub>2</sub>	10 <sup>1</sup> / <sub>4</sub>	6 <sup>5</sup> / <sub>8</sub>	1 <sup>7</sup> / <sub>8</sub>	4 <sup>3</sup> / <sub>4</sub>	1 <sup>1</sup> / <sub>2</sub>
XJC-230	225	34 <sup>1</sup> / <sub>4</sub>	10 <sup>1</sup> / <sub>4</sub>	6 <sup>5</sup> / <sub>8</sub>	1 <sup>7</sup> / <sub>8</sub>	4 <sup>3</sup> / <sub>4</sub>	1 <sup>1</sup> / <sub>2</sub>
XJC-350	235	34 <sup>1</sup> / <sub>4</sub>	10 <sup>1</sup> / <sub>4</sub>	6 <sup>5</sup> / <sub>8</sub>	1 <sup>7</sup> / <sub>8</sub>	4 <sup>3</sup> / <sub>4</sub>	1 <sup>1</sup> / <sub>2</sub>

### HIGH SHEAR, DIRECT DRIVE FIXED MOUNTS FOR CLOSED TANKS

Model	Mixer Wgt Lbs	A	B		C	D	E
			With Chuck	With Cplg			
XDC-30	102	25	9 <sup>3</sup> / <sub>4</sub>	6 <sup>3</sup> / <sub>8</sub>	0	3 <sup>7</sup> / <sub>8</sub>	3 <sup>3</sup> / <sub>8</sub>
XDC-43	120	25	9 <sup>3</sup> / <sub>4</sub>	6 <sup>3</sup> / <sub>8</sub>	0	3 <sup>7</sup> / <sub>8</sub>	3 <sup>3</sup> / <sub>8</sub>
XDC-87	130	25 <sup>1</sup> / <sub>4</sub>	9 <sup>3</sup> / <sub>4</sub>	6 <sup>3</sup> / <sub>8</sub>	0	3 <sup>7</sup> / <sub>8</sub>	3 <sup>3</sup> / <sub>8</sub>
XDC-117	135	26	9 <sup>3</sup> / <sub>4</sub>	6 <sup>3</sup> / <sub>8</sub>	0	3 <sup>7</sup> / <sub>8</sub>	3 <sup>3</sup> / <sub>8</sub>
XDC-174	180	28	10 <sup>1</sup> / <sub>4</sub>	6 <sup>5</sup> / <sub>8</sub>	0	4 <sup>3</sup> / <sub>4</sub>	1 <sup>1</sup> / <sub>2</sub>
XDC-230	186	29 <sup>3</sup> / <sub>4</sub>	10 <sup>1</sup> / <sub>4</sub>	6 <sup>5</sup> / <sub>8</sub>	0	4 <sup>3</sup> / <sub>4</sub>	1 <sup>1</sup> / <sub>2</sub>
XDC-350	216	29 <sup>3</sup> / <sub>4</sub>	10 <sup>1</sup> / <sub>4</sub>	6 <sup>5</sup> / <sub>8</sub>	0	4 <sup>3</sup> / <sub>4</sub>	1 <sup>1</sup> / <sub>2</sub>

**NOTES:**

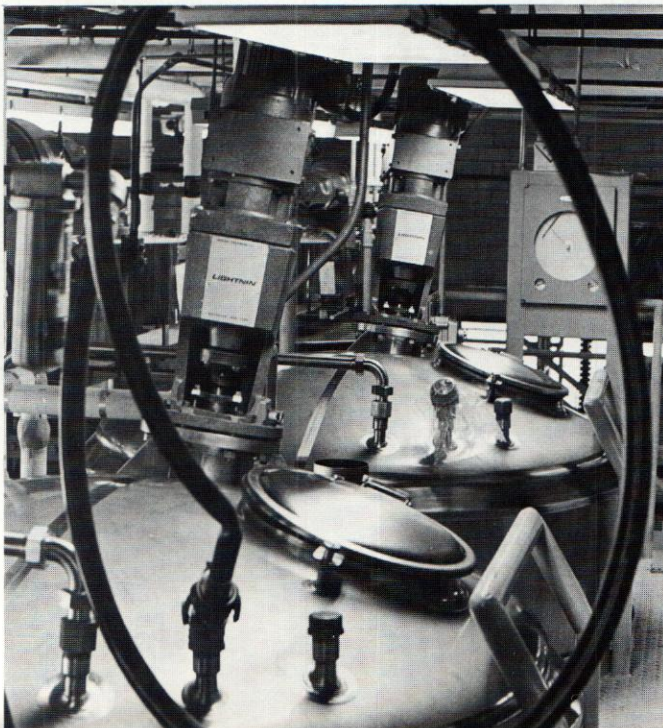
- DEPENDENT ON APPLICATION.
- ALSO AVAILABLE WITH ELECTRONIC VARIABLE SPEED DRIVE.
- WEIGHT WILL VARY WITH MOTOR ENCLOSURE AND SHAFT AND IMPELLER SELECTION.
- DIMENSIONS ARE MAXIMUM - WILL VARY WITH MOTOR ENCLOSURE. CONDUIT BOX NOT INCLUDED WITH EXPLOSION PROOF MOTOR.

- ALL BOLT HOLES STRADDLE CENTERLINE. MOUNTING BOLTS FURNISHED BY OTHERS.
- FLANGES LARGER THAN STANDARD ARE AVAILABLE, AND UNITS CAN BE ADAPTED TO MOUNT ON SMALLER FLANGES.
- DIMENSIONS ARE FOR REFERENCE ONLY UNLESS CERTIFIED.
- HANDLES ARE SHOWN 90° OUT OF POSITION.

**150 LB. ANSI (ASA) FLANGE DRILLING.**

SIZE	O.D.	B.C.	NO. OF HOLES	SIZE OF BOLTS
5	10	8 <sup>1</sup> / <sub>4</sub>	8	3/4
6	11	9 <sup>1</sup> / <sub>2</sub>		
8	13 <sup>1</sup> / <sub>2</sub>	11 <sup>3</sup> / <sub>4</sub>		

Fixed mounts with stuffing boxes find wide use on the closed tanks of pharmaceutical processing.



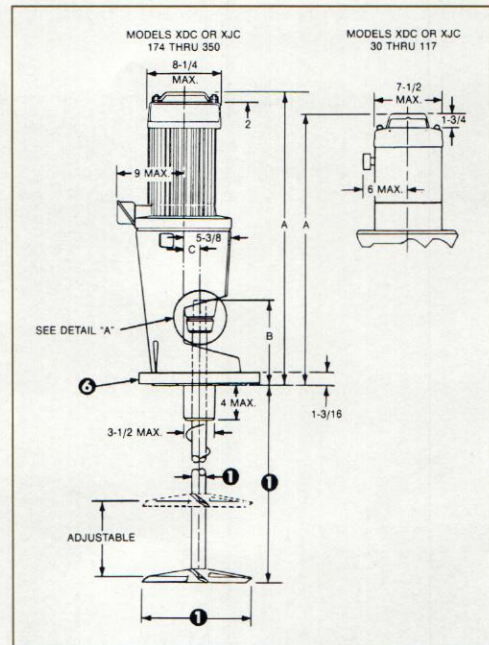
### Mixer Housing — Aluminum\*

**Chuck or Rigid Coupling** — Electroless nickel plated chuck or steel rigid coupling. Both are also available in 316SS as an option.

**Shaft and Impellers** — Steel, Type 316 stainless. Also available in any wrought commercial alloys and with coverings of such materials as rubber, PVC, polymers and fluorocarbons.

**Paint** — Styrenated alkyd enamel, 400 hours minimum salt spray resistance.

\*Other materials available



For gas-liquid contacting, Lightnin fixed-mount, mechanical seal mixers can be adapted for pressures as high as 500 psig.

