

**Packaging - Processing
Bid on Equipment**

1-847-683-7720

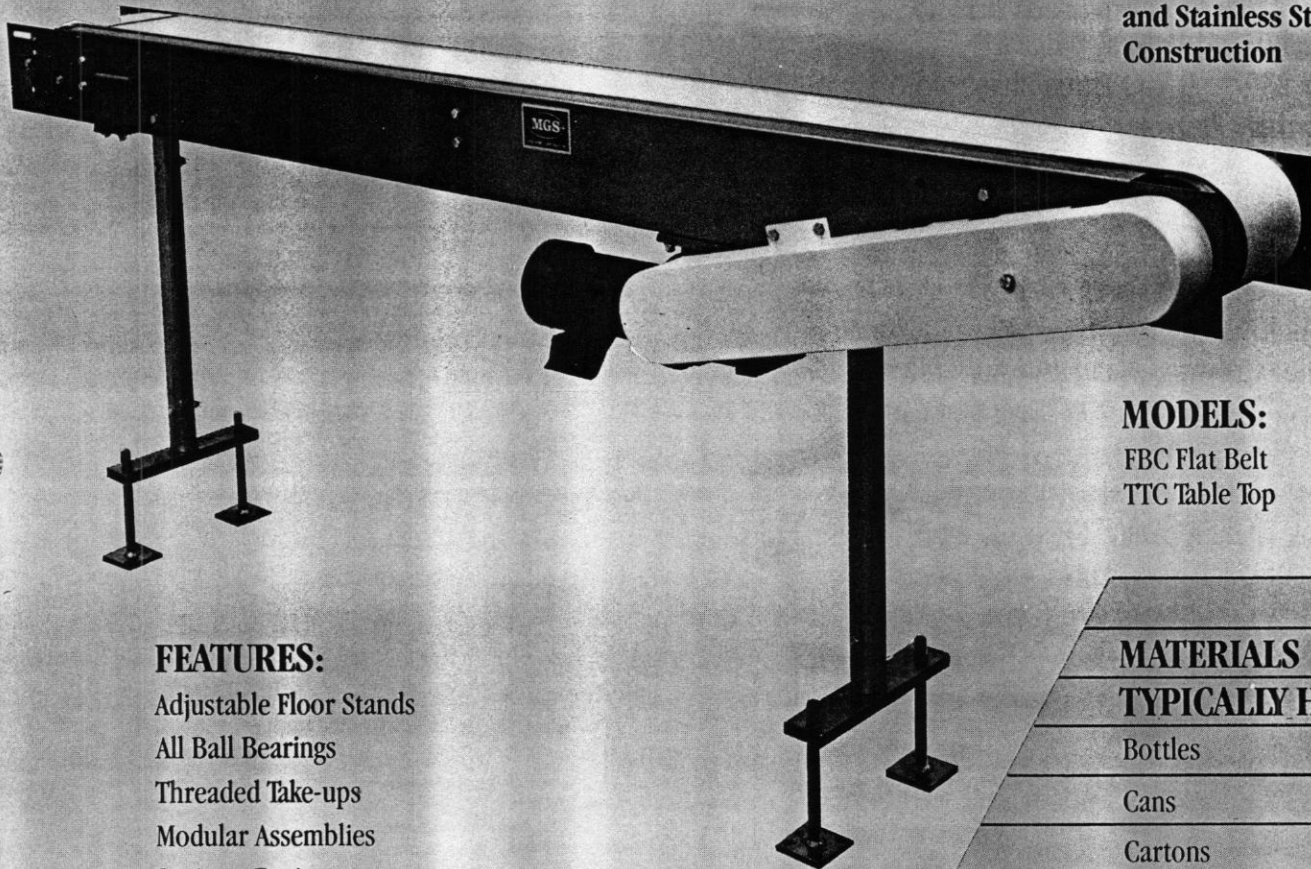
www.bid-on-equipment.com

Standard Conveyors

MGS

MACHINE CORPORATION

**FBC 8x120
with Right Hand Drive
and Stainless Steel
Construction**



MODELS:
FBC Flat Belt
TTC Table Top

FEATURES:

Adjustable Floor Stands
All Ball Bearings
Threaded Take-ups
Modular Assemblies
Sanitary Design
Heavy Duty Construction
Easily Installed

MATERIALS

TYPICALLY HANDLED

Bottles
Cans
Cartons
Cases
Trays

**Packaging - Processing
Bid on Equipment**

1-847-683-7720

www.bid-on-equipment.com

Specifications

Packaging - Processing
Bid on Equipment

1-847-683-7720

www.bid-on-equipment.com

OPTIONS AVAILABLE:

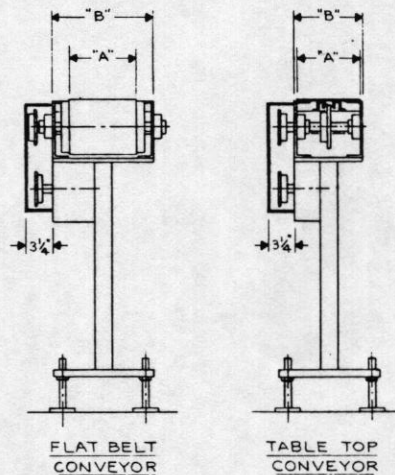
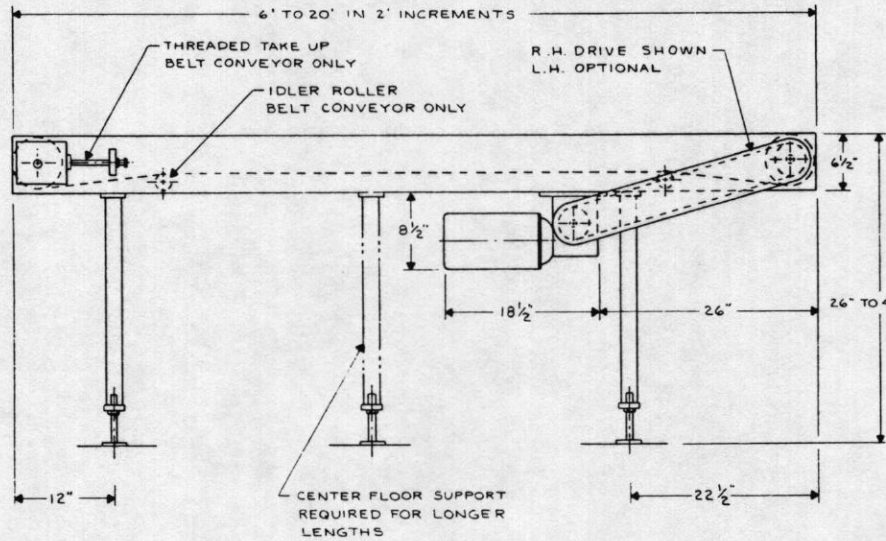
- Stainless Steel Construction
- Fixed Speed Drives of 60, 75 and 90 FPM
- SCR Variable Speed
- Product Guide Rails
- Right or Left Hand Drives
- 115 VAC or 230/460 VAC Three Phase Motors
- Motor Starting Controls
- Surge Controls
- Special Lengths and Widths

FLAT BELT CONVEYOR

- Standard Belting is 2 Ply White Hycar
- 6" Diameter Crowned Head and Tail Pulleys
- Belt Widths of 6, 8, 10 and 12" are Standard

TABLE TOP CONVEYOR

- Table Top is Thermoplastic Snap-on Type
- #60 Drive and Tail Sprockets
- Table Top Plate Widths of 4½, 6 and 7½"



FLAT BELT				
WIDTH "A"	6"	8"	10"	12"
WIDTH "B"	10"	12"	14"	16"

TABLE TOP		
4½"	6"	7½"
5"	6½"	8"

LEADERS IN THE MANUFACTURING OF HIGH QUALITY PACKAGING MACHINERY.

MGS

MACHINE CORPORATION

9900 85th Avenue North

Maple Grove, MN 55369 (612) 425-8808