

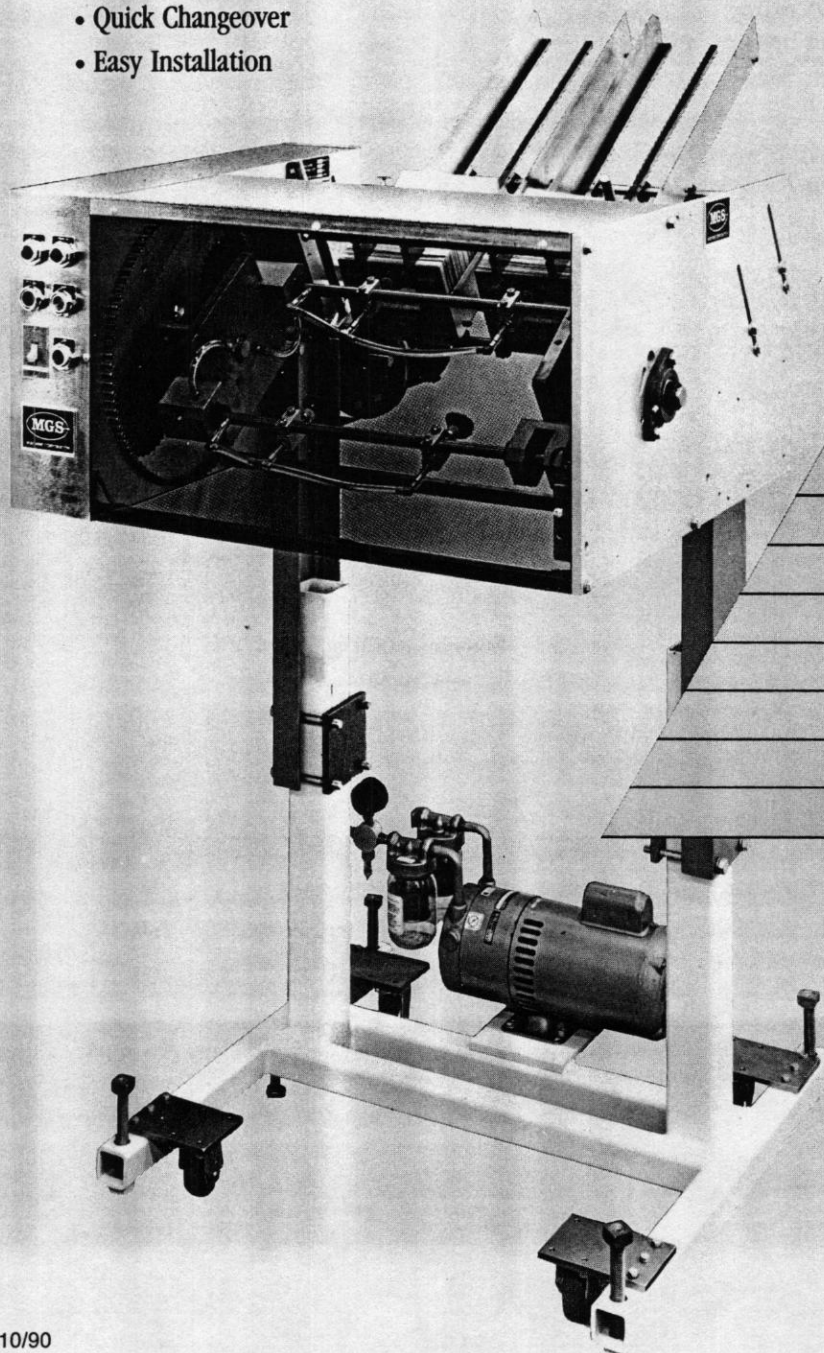
Automatic Rotary Pick and Place Machines

MGS

MACHINE CORPORATION

FEATURES:

- Simple to Operate
- Low Maintenance
- Versatile
- Sanitary Design
- Quick Changeover
- Easy Installation



MODELS:

RPP-221D THRU 224D

RPP-421D THRU 424D

RPP-231D THRU 234D

RPP-431D THRU 434D

MATERIALS

TYPICALLY HANDLED

Single Sheet Paper Stock

Multifold Coupons Envelopes

Labels Paper/Plastic Plates

Greeting Cards Styrofoam Trays

Parchment Paper Packets

Glassine Paperboard Trays

Card Stock Flat Cartons

**Right Hand Model RPP-232D with
30" Magazines, Double Column
Floor Stand, Casters, SCR Drive
Motor and 3/4 Hp Vacuum Pump.
Patented.**

Specifications

Packaging - Processing
Bid on Equipment

1-847-683-7720

www.bid-on-equipment.com

TYPICAL POWER REQUIREMENTS:

ELECTRICAL: 115 VAC 10 amps max

(with optional 1/4 Gast Pump)

AIR: 80 PSI (if required)

VACUUM: up to 10 SCFM at 20" Hg

(if optional pump is not purchased)

OPTIONS AVAILABLE:

- 16 or 48" Long Magazine
- Oscillating Rod Magazine
- Quick Change Magazine
- Power Feed Magazine
- Gast Vacuum Pump
- Floor Stand
- Hand Crank Height Adjustment
- Floor Casters
- Adhesive System
- No Product No Placement
- Missed Detection System With Or Without Buzzer
- Parallel Jackshaft Drive
- Right Angle Gearbox Drive
- Right And Left Hand Units
- Shutter And Counter For Batching
- SCR Drive Motor
- Random Cycle Drive System

MAXIMUM SPEEDS:

250 Placements Per Minute RPP-231

300 Placements Per Minute RPP-221

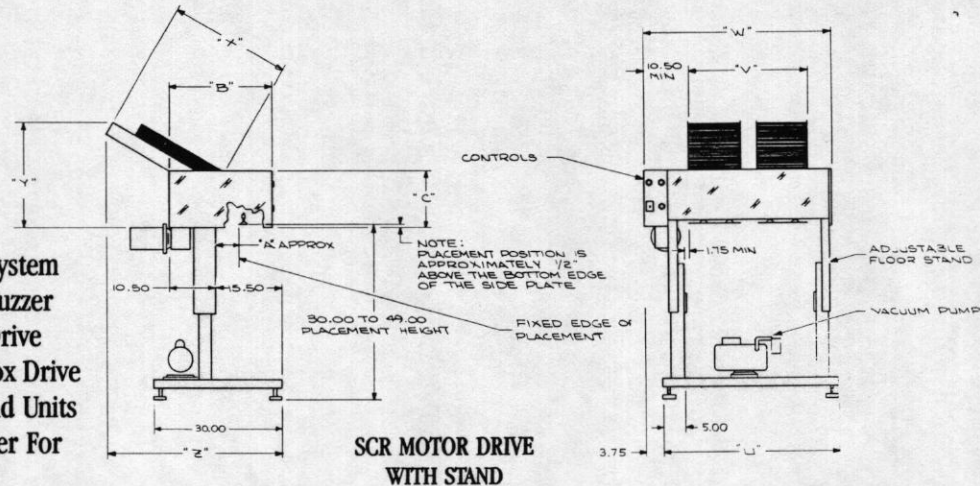
500 Placements Per Minute RPP-431

600 Placements Per Minute RPP-421

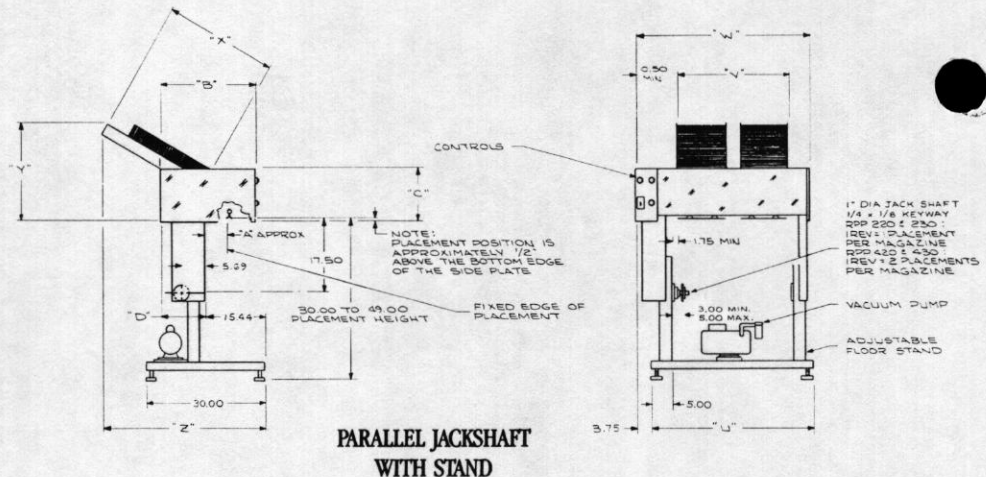
(Multiply This Times The Number of Magazines For Total Speeds)

PRODUCT SIZE RANGE:

- Minimum: 1" X 1"
- Maximum Height By Model:
RPP-421 Thru 424 4"
RPP-221 Thru 224 6"
RPP-431 Thru 434 6"
RPP-231 Thru 234 8"
- Width: 18" and 28" wide magazines are available. The maximum product size is determined by the magazine centers.



SCR MOTOR DRIVE WITH STAND



PARALLEL JACKSHAFT WITH STAND

BASIC UNIT

MODEL	A	B	C	D
RPP-222D, 422D	8.81	23.50	13.00	7.31
RPP-232D, 432D	8.69	29.00	17.00	10.81

MAGAZINE

NOMINAL	WIDTH			LENGTH		
	U	V	W	X	Y	Z
18"	31.38	18.00	34.00	16.25	20.75	30.00
				30.00	27.00	43.50
28"	41.38	28.00	44.00	48.00	33.00	57.00

LEADERS IN THE MANUFACTURING OF HIGH QUALITY PACKAGING MACHINERY.

MGS

MACHINE CORPORATION

9900 85th Avenue North

Maple Grove, MN 55369 (612) 425-8808