

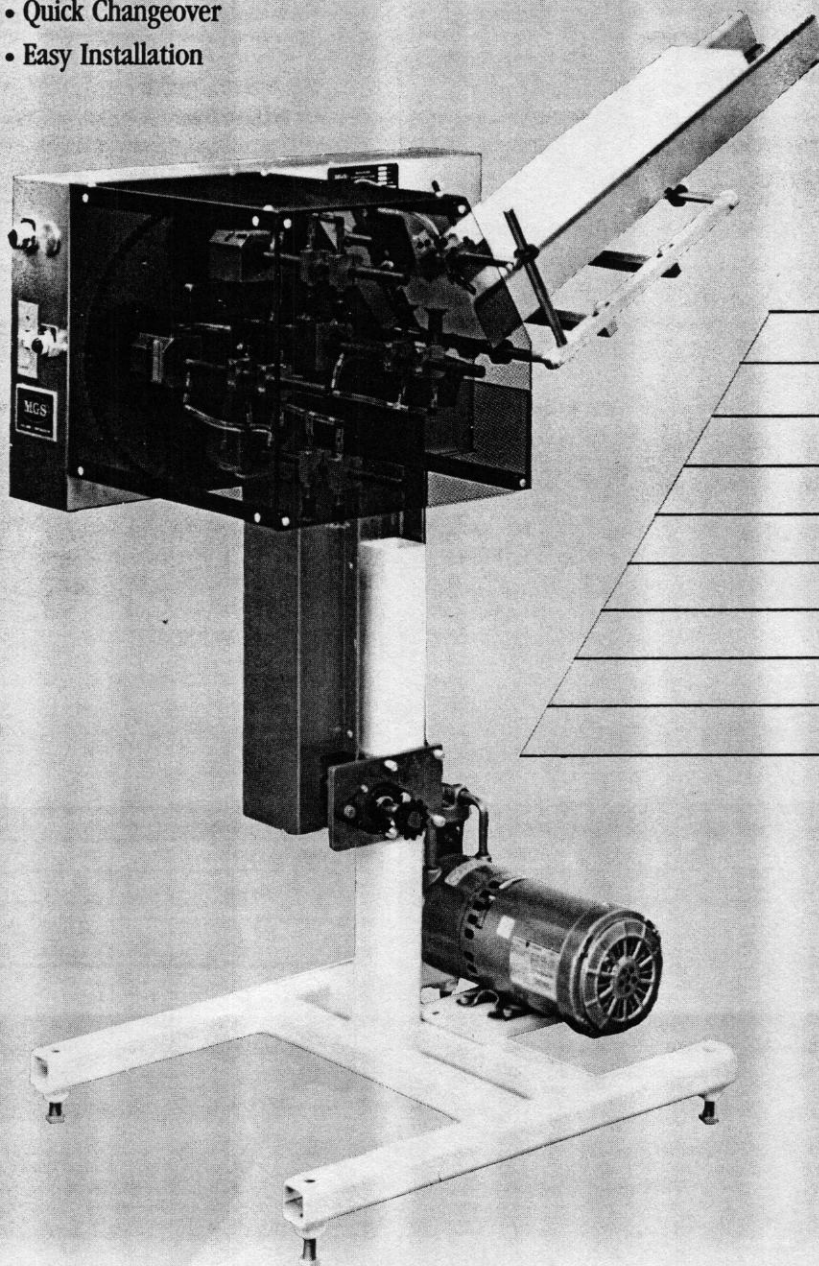
# Automatic Rotary Pick and Place Machines

**MGS**

MACHINE CORPORATION

## FEATURES:

- Simple to Operate
- Low Maintenance
- Versatile
- Sanitary Design
- Quick Changeover
- Easy Installation



**MODELS:** RPP-221 AND 421  
RPP-231 AND 431

## MATERIALS

### TYPICALLY HANDLED

Single Sheet Paper Stock

Multifold Coupons      Envelopes

Labels      Paper/Plastic Plates

Greeting Cards      Styrofoam Trays

Parchment Paper      Packets

Glassine      Paperboard Trays

Card Stock      Flat Cartons

**Right Hand Model RPP-431 with 30" Magazine, Floor Stand, Parallel Jackshaft, 3/4 Hp Vacuum Pump and Missing Detector. Patented.**

# Specifications

## TYPICAL POWER REQUIREMENTS:

**ELECTRICAL:** 115 VAC 10 amps max

(with optional 1/4 Gast Pump)

**AIR:** 80 PSI (if required)

**VACUUM:** up to 10 SCFM at 20" Hg

(if optional pump is not purchased)

## OPTIONS AVAILABLE:

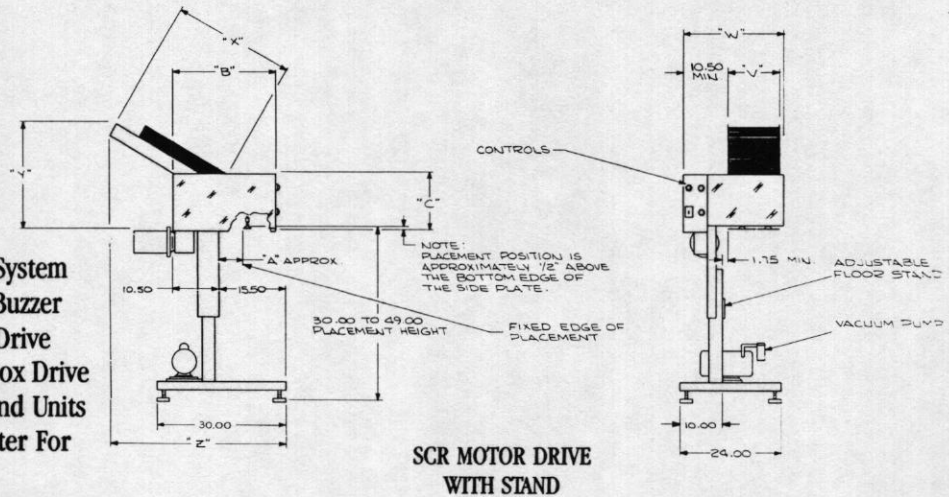
- 16 or 48" Long Magazine
- Oscillating Rod Magazine
- Quick Change Magazine
- Power Feed Magazine
- Gast Vacuum Pump
- Floor Stand
- Hand Crank Height Adjustment
- Floor Casters
- Adhesive System
- No Product No Placement System
- Missed Detection System With Or Without Buzzer
- Parallel Jackshaft Drive
- Right Angle Gearbox Drive
- Right And Left Hand Units
- Shutter And Counter For Batching
- Timing Screw Indexer
- SCR Drive Motor
- Random Cycle Drive System

## MAXIMUM SPEEDS:

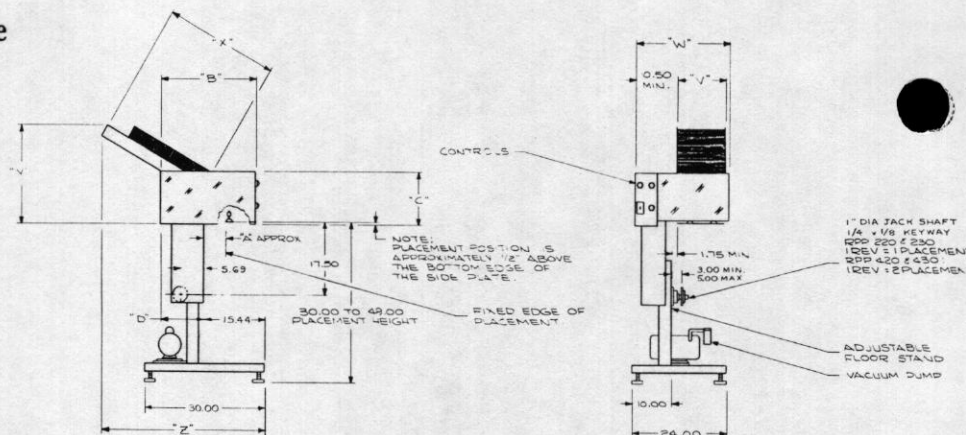
- 250 Placements Per Minute RPP-231
- 300 Placements Per Minute RPP-221
- 500 Placements Per Minute RPP-431
- 600 Placements Per Minute RPP-421

## PRODUCT SIZE RANGE:

- Minimum: 1" X 1"
- Maximum Height By Model:  
 RPP-421 4"  
 RPP-221 6"  
 RPP-431 6"  
 RPP-231 8"
- Width: 7" and 12" wide magazines are available. The maximum product size is the same.



**SCR MOTOR DRIVE WITH STAND**



**PARALLEL JACKSHAFT WITH STAND**

MODEL	BASIC UNIT			
	A	B	C	D
RPP-221, 421	8.81	23.50	13.00	7.31
RPP-231, 431	8.69	29.00	17.00	10.81

NOMINAL	MAGAZINE WIDTH		MAGAZINE LENGTH		
	V	W	X	Y	Z
7"	7.00	18.50	16.25	20.75	30.00
			30.00	27.00	43.50
12"	12.00	23.50	48.00	33.00	57.00

LEADERS IN THE MANUFACTURING OF HIGH QUALITY PACKAGING MACHINERY.



MACHINE CORPORATION  
 9900 85th Avenue North  
 Maple Grove, MN 55369 (612) 425-8808