

Packaging - Processing
Bid on Equipment

1-847-683-7720

www.bid-on-equipment.com

MGS

MACHINE CORPORATION

Automatic Intermittent Pick and Place Machines

FEATURES:

- Simple to Operate
- Low Maintenance
- Versatile
- Sanitary Design
- Quick Changeover
- Easy Installation
with Air Drive
Electric Cycle



MODELS: IPP-170
IPP-190
IPP-1110

MATERIALS TYPICALLY HANDLED

Single Sheet Paper Stock

Multifold Coupons Plastic Plates

Labels Plastic Trays

Corrugated Styrofoam Trays

Parchment Paper Foil Trays

Glassine Paperboard Trays

Card Stock Packets

Right Hand Model
IPP-170
with 30" Magazine

Specifications

Packaging - Processing
Bid on Equipment

1-847-683-7720

www.bid-on-equipment.com

TYPICAL POWER REQUIREMENTS:

ELECTRICAL: 115 VAC 10 Amps Max

(with optional 1/4 Gast Pump)

AIR: 80 PSI at 0.25 CFM

VACUUM: up to 10 SCFM at 20" Hg

(if optional pump is not purchased)

OPTIONS AVAILABLE:

- Plexiglass Front Guard
- Denesting Motion
- 16" Or 48" Long Magazine
- Oscillating Rod Magazine
- Quick Change Magazine
- Gast Vacuum Pump
- Venturi Vacuum System
- Floor Stand
- Hand Crank Height Adjustment
- Floor Casters
- Adhesive System
- Photoelectric Cycle Control
- Missed Detection System With Or Without Buzzer
- Auto Recycle If An Item Is Missed
- Parallel Jackshaft Drive
- Right Angle Gearbox Drive
- Vertical Placement Mode
- Right And Left Hand Units

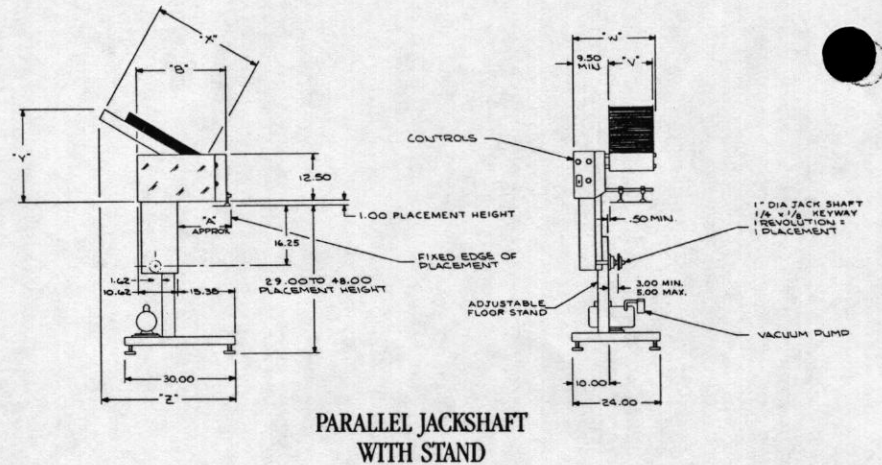
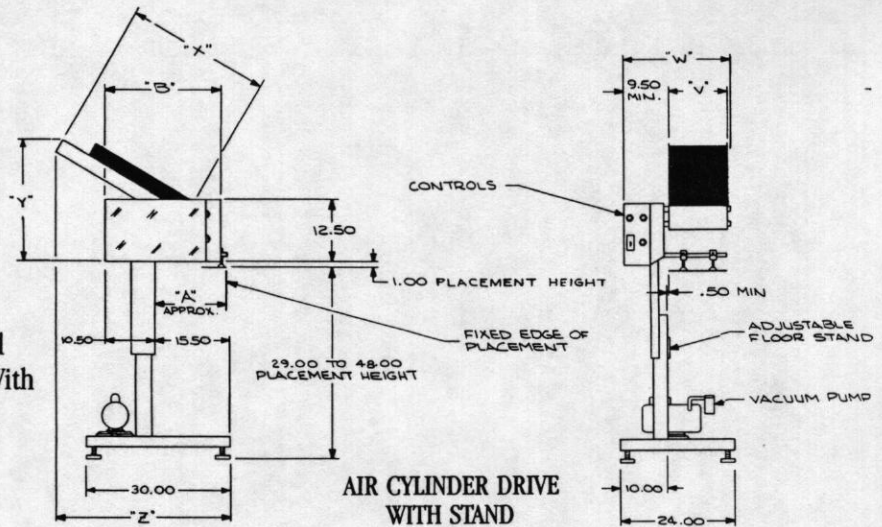
MAXIMUM SPEEDS:

100 Cycles Per Minute Vertical Placement Mode

70 Cycles Per Minute Horizontal Placement Mode

PRODUCT SIZE RANGE:

- MINIMUM: 1" x 1"
- HEIGHT: 6, 9, 12 and 15" high magazines are available.
- MAXIMUM HEIGHTS BY MODEL:
IPP-170 9"
IPP-190 12"
IPP-1110 15"
- WIDTH: 7 and 12" wide magazines are available.
- The maximum product size is the same.



BASIC UNIT

MODEL	A	B
IPP-170	14.75	24.50
IPP-190	18.75	26.50
IPP-1110	22.75	28.50

MAGAZINE

NOMINAL	WIDTH		LENGTH		
	V	W	X	Y	Z
7"	7.00	17.75	16.25	18.00	30.00
			30.00	25.00	38.00
12"	12.00	22.75	48.00	34.00	50.00

LEADERS IN THE MANUFACTURING OF HIGH QUALITY PACKAGING MACHINERY.



MACHINE CORPORATION

9900 85th Avenue North

Maple Grove, MN 55369 (612) 425-8808