

Packaging - Processing
Bid on Equipment

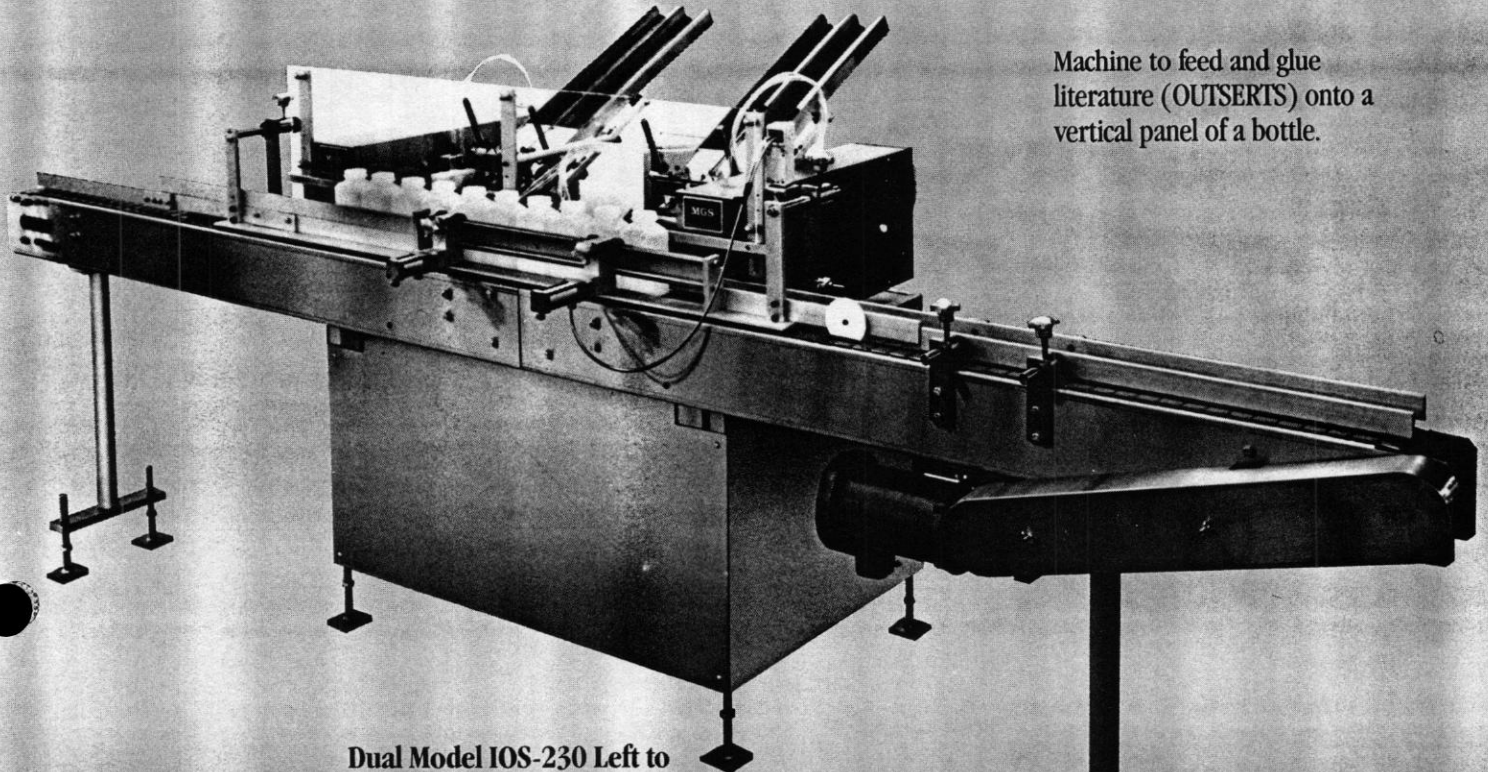
1-847-683-7720

www.bid-on-equipment.com

Automatic Intermittent Outserting Machines

MGS

MACHINE CORPORATION



Machine to feed and glue literature (OUTSERTS) onto a vertical panel of a bottle.

Dual Model IOS-230 Left to Right Flow with Unglued Outsert Attachment

FEATURES:

- Simple to Operate
- Low Maintenance
- Versatile
- Sanitary Design
- Quick Changeover
- Easy Installation
- Wheel Type Hot Melt Glue System

MODELS:

IOS-130 THRU 430
DUAL IOS-230
QUAD IOS-230

MATERIALS

TYPICALLY HANDLED

Outserts:	Bottles:
Glued	Square
Unglued	Rectangular
	Plastic
	Glass

Packaging - Processing
Bid on Equipment

1-847-683-7720

www.bid-on-equipment.com

Specifications

Packaging - Processing
Bid on Equipment

1-847-683-7720

www.bid-on-equipment.com

TYPICAL POWER REQUIREMENTS:

- ELECTRICAL: 115 VAC 30 amps max (with optional $\frac{3}{4}$ Gast Pump)
- AIR: 80 PSI at 1.25 CFM
- VACUUM: up to 10 SCFM at 20" Hg (if optional pump is not purchased)

OPTIONS AVAILABLE:

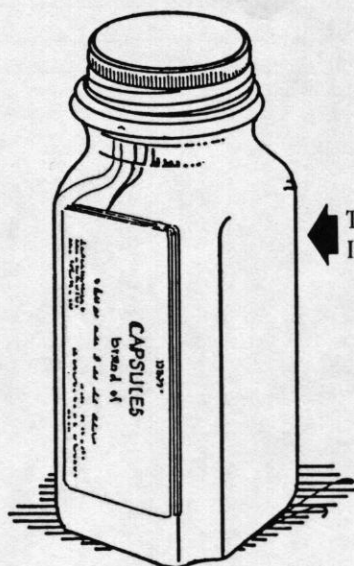
- 48" Long Magazine
- Quick Change Magazine
- Quick Change Glue Pot
- Gast Vacuum Pump
- Floor Casters
- Missed Detection System With Or Without Buzzer
- Right To Left or Left To Right Product Flow

MAXIMUM SPEEDS:

- IOS-130 40 BPM
- IOS-230 80 BPM
- IOS-330 120 BPM
- IOS-430 150 BPM
- DUAL IOS-230 120 BPM
- QUAD IOS-230 300 BPM

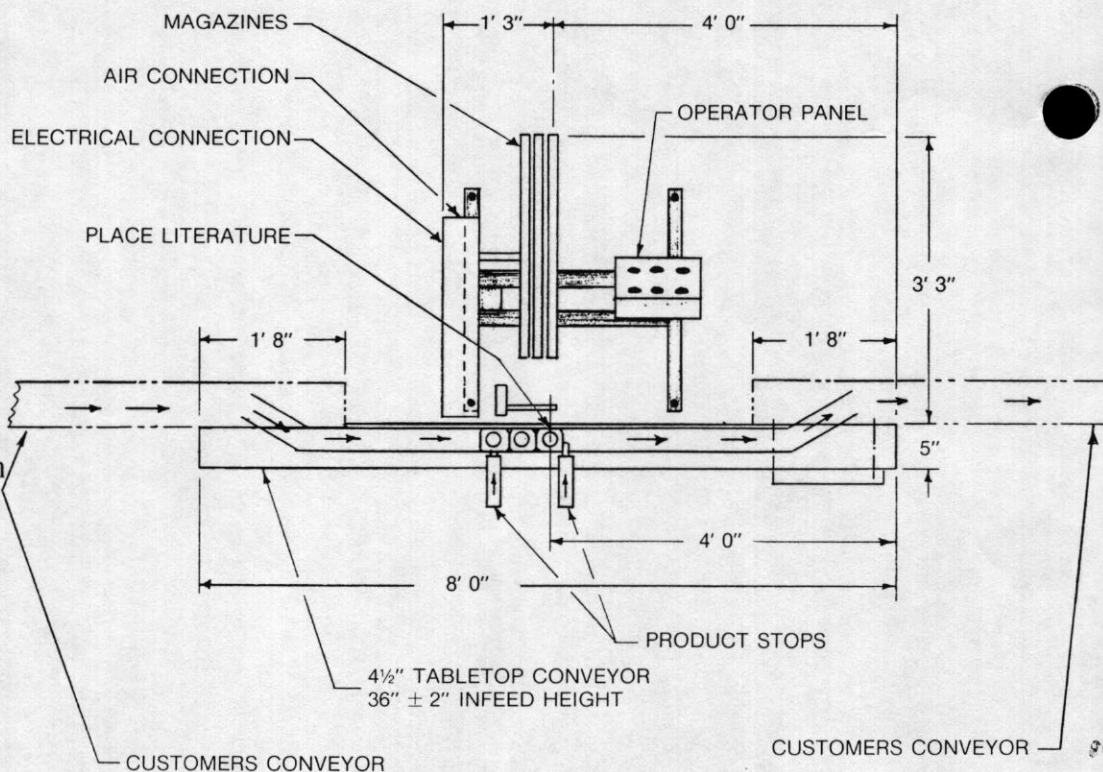
PRODUCT SIZE RANGE:

- OUTSERTS: 1" x 1 $\frac{1}{4}$ " Minimum To 2" x 3" Maximum
- BOTTLES: 1" x 1" x 2" High Minimum To 3" x 4" x 7 $\frac{1}{2}$ " High Maximum
- Because of the many outsert and bottle sizes possible, please contact the factory if your range exceeds these as other combinations are possible.



TYPICAL BOTTLE WITH OUTSERT IN POSITION

MODEL IOS-330 WITH 8 FOOT CONVEYOR AND LEFT TO RIGHT FLOW



LEADERS IN THE MANUFACTURING OF HIGH QUALITY PACKAGING MACHINERY.

MGS

MACHINE CORPORATION

9900 85th Avenue North

Maple Grove, MN 55369 (612) 425-8808