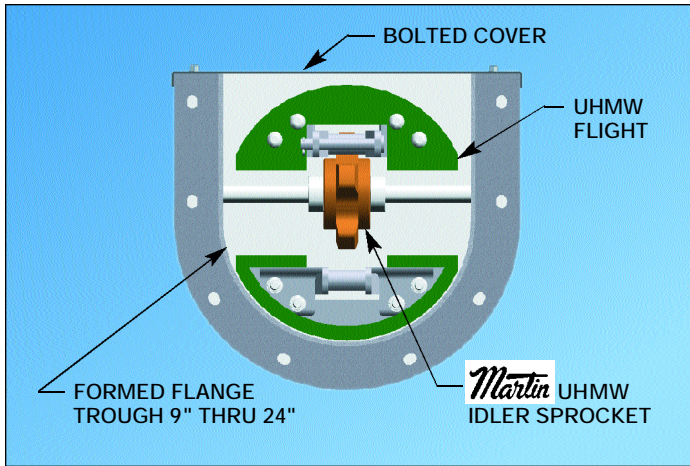
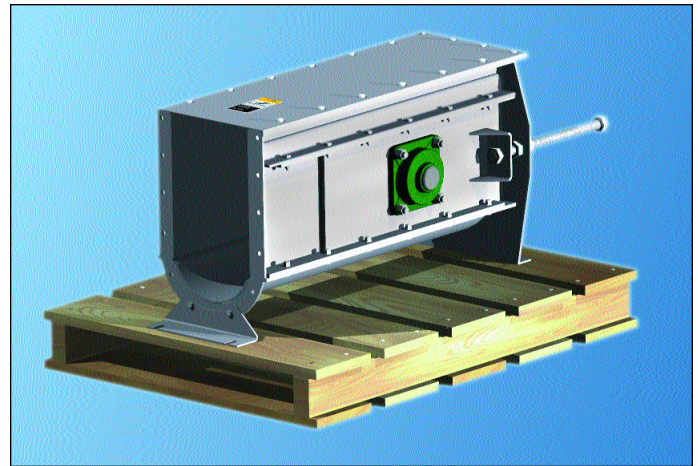


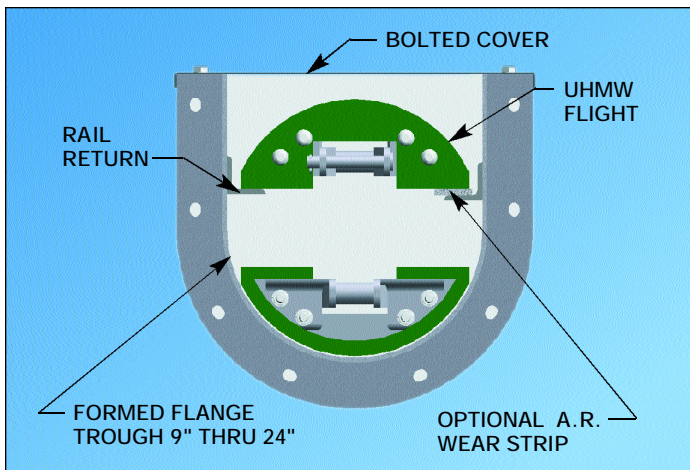
# DRAG CONVEYOR Round Bottom



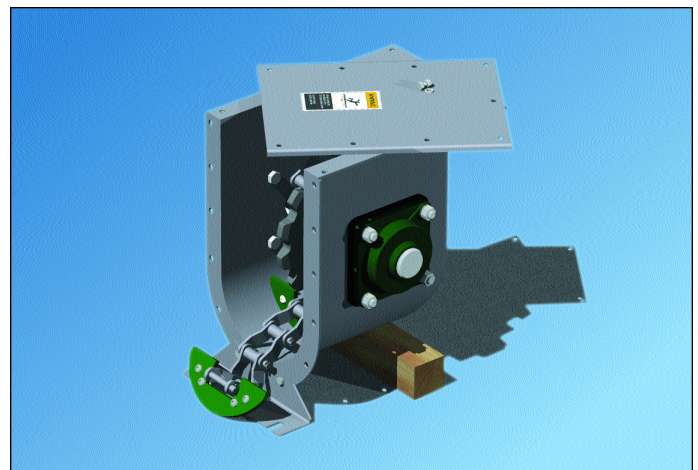
**IDLER RETURN**



**ROUND BOTTOM TAIL TAKE-UP**



**RAIL RETURN**



**SELF-CLEANING TAIL**



**HEAD TAKE-UP**

### STANDARD FEATURES

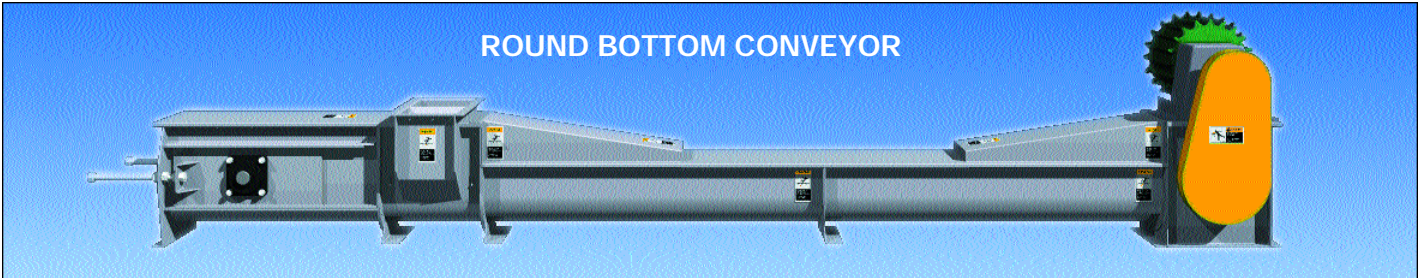
- Bolted Flanged Covers
- Welded Steel Chain
- Jig Welded Flight Attachment
- UHMW Flights
- Heavy Duty Form Flange Trough
- Heat Treated Sprockets
- Rail Return System
- Flow Through Inlets
- Heavy Duty Backing Plate

### POPULAR OPTIONS

- By-Pass Inlets
- Hip Roof Cover
- Self-Cleaning Tail Section
- Intermediate Discharge
- Bend Section
- Flight Saver Idler Return System
- Optional A.R. Wear Strip



# DRAG CONVEYOR Round Bottom



## CAPACITY FPM/RPM

SERIES	SIZE	100 FPM		125 FPM		150 FPM		175 FPM		200 FPM	
		CFH	RPM	CFH	RPM	CFH	RPM	CFH	RPM	CFH	RPM
900	9"	2040	33	2600	41	3050	50	3500	58	4080	66
1200	12"	3475	33	4300	41	5200	50	6075	58	6950	66
1400	14"	4758	33	5900	40	7100	50	8300	58	9500	66
1600	16"	6050	32	7600	40	9150	48	10600	56	12100	64
1800	18"	8100	32	10150	40	12300	48	14300	56	16200	64
2000	20"	10500	23	13000	29	15650	35	18200	40	21000	46
2400	24"	14800	23	18150	29	22000	35	25750	40	29600	46

## NOTES:

1. Capacities are based on 100% loading with free-flowing grains at 48 pounds per cubic foot.
2. Selection of conveyors should be based upon material characteristics.
3. Capacities and speeds will vary for other types of materials and for materials conveyed at an incline.

Please consult *Martin* if you have any questions concerning your application.

## MATERIAL THICKNESS AND APPROXIMATE SHIPPING WEIGHTS

SERIES	ADJ. TAIL	WGT.	BY-PASS	WGT.	FIXED HEAD	WGT.	INTERMEDIATE				COVER
							STD. DUTY	WGT.	SPEC. DUTY	WGT.	
900	3/16	367	3/16	89	3/16	187	14 GA.	185	3/16	255	14 GA.
1200	3/16	394	3/16	127	3/16	210	12 GA.	285	3/16	420	14 GA.
1400	3/16	412	3/16	140	3/16	221	12 GA.	310	3/16	460	14 GA.
1600	3/16	475	3/16	160	3/16	257	12 GA.	365	3/16	520	14 GA.
1800	3/16	575	3/16	238	3/16	281	10 GA.	507	3/16	640	12 GA.
2000	1/4	856	3/16	295	1/4	486	10 GA.	578	3/16	705	12 GA.
2400	1/4	899	3/16	370	1/4	665	10 GA.	742	3/16	870	12 GA.

## NOTES:

1. Tail and head weights shown include bearings, shafts, and standard sprockets.
2. Intermediate weights include return rails and bolted bottoms and covers.

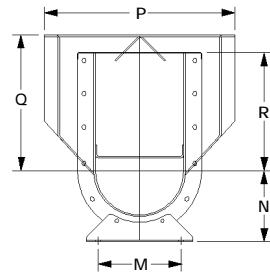
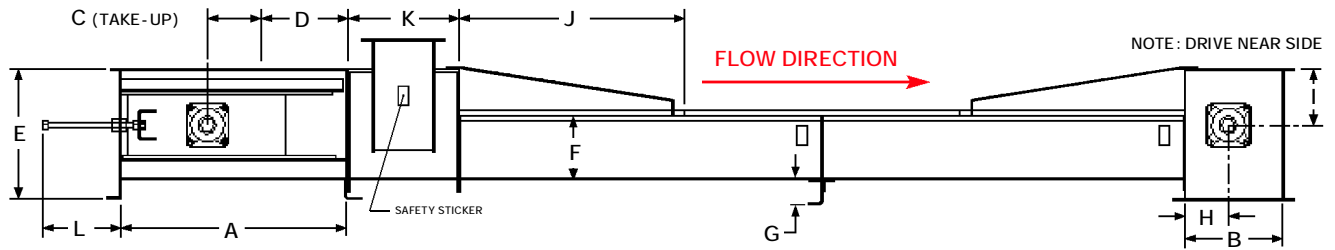
6" Drag conveyors are also available upon request.  
 Please contact *Martin* Conveyor for quote.

*Martin* has designed its Round Bottom with the user in mind. We have incorporated larger heat-treated sprockets into our designs to reduce noise, vibration and chordal action while increasing chain and sprocket life. Our goal is to reduce maintenance and operating costs for the user.

All drag flights are a (food safe) white UHMW polyethylene material attached to welded steel chain, with exception of the 6" drag conveyor which uses combination chain.

We offer the *Martin* Round Bottom Drag with either a rail return or optional Flight Saver Idler return system. Both systems assure long life and quiet operation.

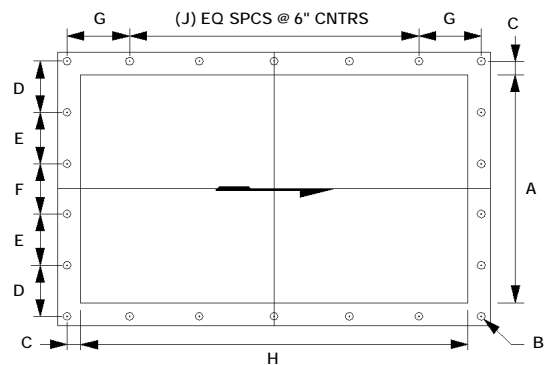
# DRAG CONVEYOR Round Bottom



**BY-PASS INLET**

SERIES	A	B	C	D	E	F	G	H	I	J	K	L	M	N	P	Q	R
900	38	18	9	14-1/4	21-5/8	11-1/8	3-3/16	9	9-5/16	36	18	13	9-3/8	8-3/8	20-7/8	15-1/3	13-5/16
1200	38	20	9	14-1/4	23-3/4	14-1/4	2-15/16	10	9-13/16	36	21	13	12-1/4	9-1/2	24-3/8	15-1/3	13-5/16
1400	38	20	9	14-1/4	24	16-3/4	3-3/16	10	10-5/16	36	23	13	13-1/2	10-3/4	24-3/8	15-1/3	13-5/16
1600	38	24	9	14-1/4	26	19-1/8	3-5/16	12	11-5/16	36	25	13	14-7/8	11-7/8	28-3/8	16-1/4	14-1/4
1800	38	24	9	14-1/4	27-1/2	21-5/8	3-11/16	12	11-13/16	24	27	13	16	13-1/4	29	16	14-1/4
2000	41	29	12	16	33-1/4	24	4-1/4	14-1/2	14-7/8	24	29	16	19-1/4	14-7/8	34	20-1/2	18-1/2
2400	41	34	12	16	36-1/2	29	5-7/16	17	15-13/16	24	33	16	20	18-1/16	39	20-5/8	18-5/8

SERIES	A	B	C	D	E	F	G	H	J
900	10	7/16	1	4	***	4	4	18	2
1200	13	7/16	1-1/4	5-1/8	***	5-1/4	5-1/4	20	2
1400	15	7/16	1-1/4	3-1/2	3-1/2	3-1/2	5-1/4	20	2
1600	17	7/16	1-1/4	3-3/4	4	4	3-5/8	24	2
1800	19	7/16	1-1/4	4-3/16	4-3/8	4-3/8	3-5/8	24	2
2000	21	9/16	1-1/2	4-7/8	4-3/4	4-3/4	4	29	4
2400	25	9/16	1-1/2	5-5/8	5-5/8	5-1/2	6-1/2	34	4



**BY-PASS INLET, HEAD & INTERMEDIATE DISCHARGE**

**WARNING AND SAFETY REMINDER**

**LOCK OUT POWER** before removing covers, guards or before servicing. Exposed moving parts can cause severe injury.