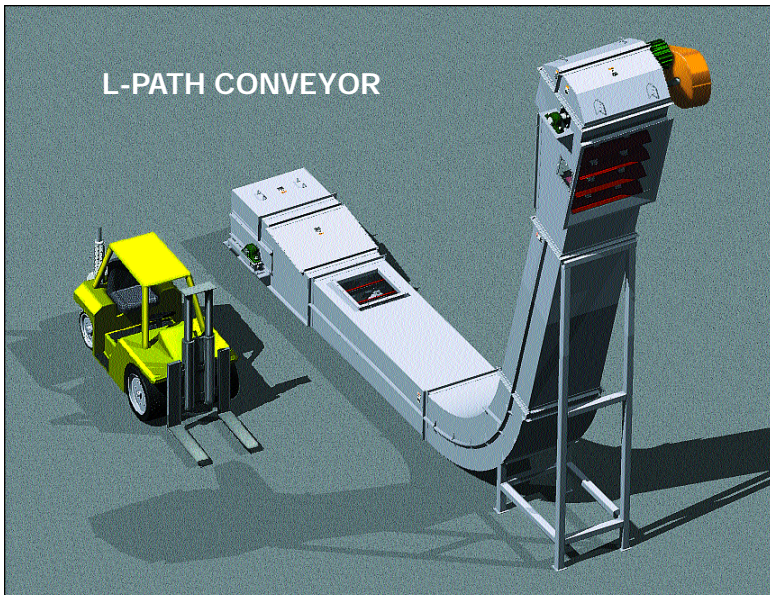


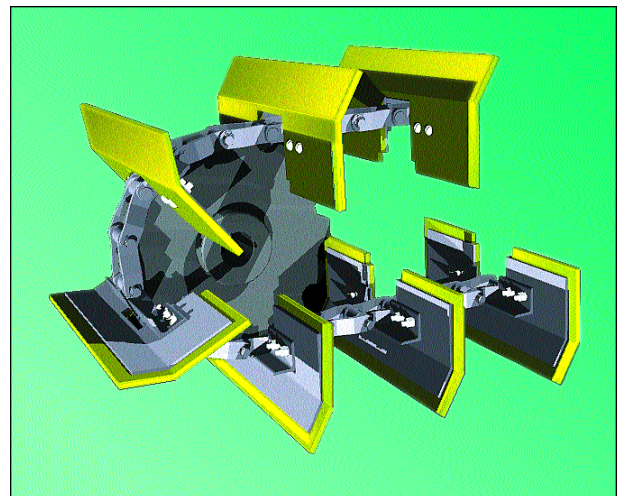


DRAG CONVEYOR L-Path



L-PATH CONVEYOR

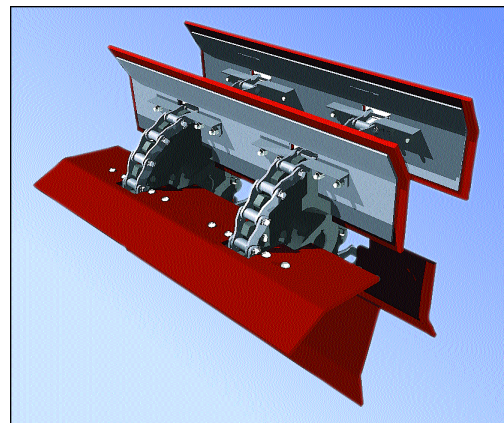
SERIES	1 FPM	50 FPM		75 FPM		100 FPM	
	CFH	CFH	RPM	CFH	RPM	CFH	RPM
610	20	1000	11	1500	16-1/2	2000	22
913	35	1750	8	2625	12	3500	16
1020	58	2900	11	4350	16-1/2	5800	22
1224	87	4350	11	6525	16-1/2	8700	22
1236	129	6450	10	9675	15	12900	20
1342	150	7500	10	11250	15	15000	20



SINGLE CHAIN CONFIGURATION



S-PATH CONVEYOR



DOUBLE CHAIN CONFIGURATION

NOTES:

- Capacities are based on the handling of non-abrasive materials (as listed).
 - Cotton Seed Hulls • Cotton Seed Meal
 - Delinted Cotton Seed • Ground Feed
 - Whole Soybeans • Hot Soybean Meal
 - Whole Corn • Whole Rice
- CAUTION** should be observed when handling fine granular materials (as listed).
 - Wheat Flour • Sugar • Powdered Lime
 - Starch • Carbon Black • Soda Ash

CHAIN FEATURES

- Welded Steel Chain
- UHMW Flights
- Jig Welded Attachments
- Heavy Duty Backing Plates

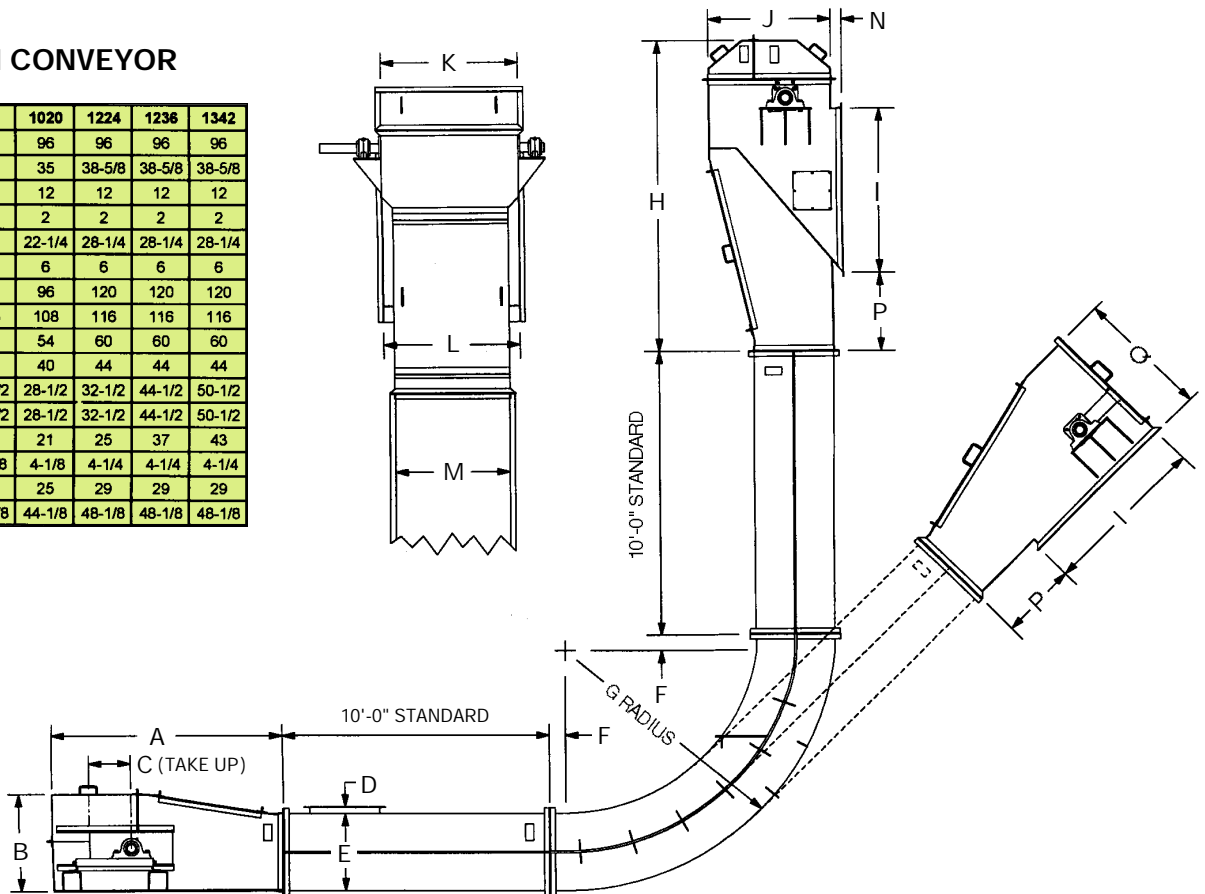
Please consult *Martin* if you have any questions concerning your application.

DRAG CONVEYOR L-Path

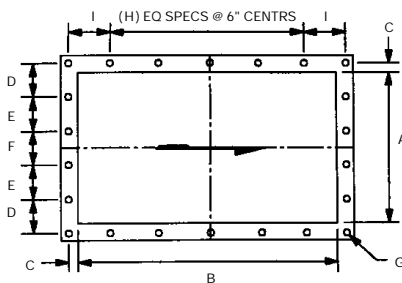


L-PATH CONVEYOR

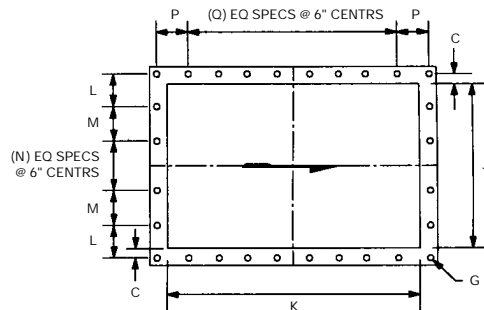
SERIES	610	913	1020	1224	1236	1342
A	68	89	96	96	96	96
B	29	37	35	38-5/8	38-5/8	38-5/8
C	12	12	12	12	12	12
D	2	2	2	2	2	2
E	14-1/2	20	22-1/4	28-1/4	28-1/4	28-1/4
F	3	3	6	6	6	6
G	96	96	96	120	120	120
H	82	108	108	116	116	116
I	36	42	54	60	60	60
J	32	38	40	44	44	44
K	18-3/4	22-1/2	28-1/2	32-1/2	44-1/2	50-1/2
L	18-3/4	22-1/2	28-1/2	32-1/2	44-1/2	50-1/2
M	11	14	21	25	37	43
N	4-1/8	4-1/8	4-1/8	4-1/4	4-1/4	4-1/4
P	21-1/2	25	25	29	29	29
Q	36-1/8	42-1/8	44-1/8	48-1/8	48-1/8	48-1/8



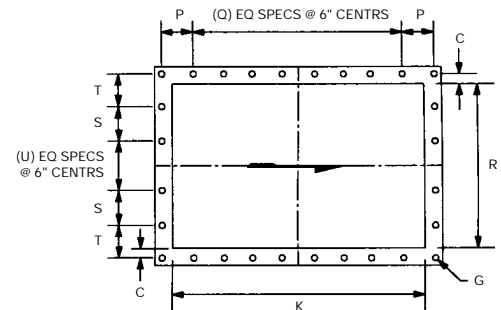
STANDARD INLET



HEAD DISCHARGE 45°-90°



HEAD DISCHARGE 0°-45°



SERIES	A	B	C	D	E	F	G	H	I	J	K	L	M	N	P	Q	R	S	T	U
610	7	16	1	4-1/2	***	***	7/16	2	3	18-3/4	36	4-3/8	***	2	4	5	11	***	3-1/2	3-1/2
913	10	18	1-1/4	4	***	4-1/2	7/16	2	4-1/4	22-1/2	42	4-3/4	4-3/4	1	4-1/4	6	14	4-3/4	3-1/2	1
1020	17	27	1-1/2	4	4	4	9/16	3	6	29	54	4	***	4	4-1/2	8	21	4-1/2	4-1/2	1
1224	21	31	1-1/2	4-3/4	4-3/4	5	9/16	4	5	33	60	***	***	6	4-1/2	9	25	***	5	3
1236	33	43	1-1/2	4-1/2	6	6	9/16	6	5	45	60	***	***	8	4-1/2	9	37	***	5	5
1342	38	48	1-1/2	5-1/2	6	6	9/16	7	4-1/2	51	60	4-1/2	4-1/2	6	4-1/2	9	43	4	4	5