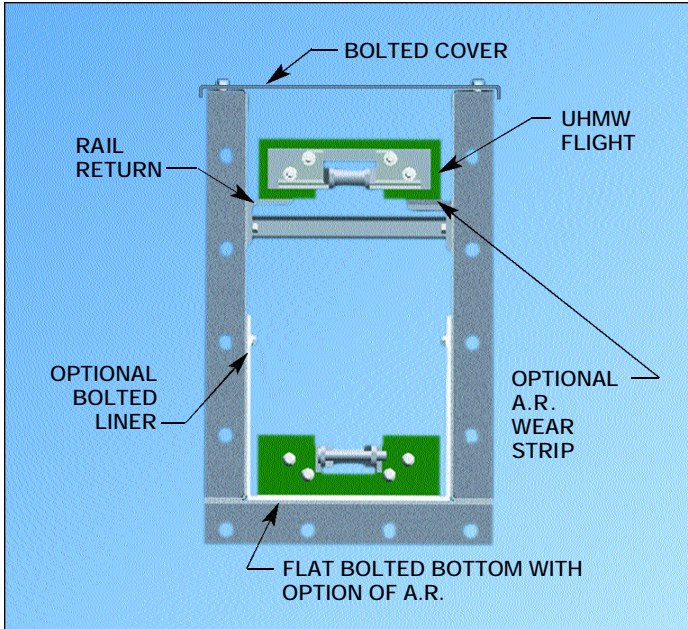
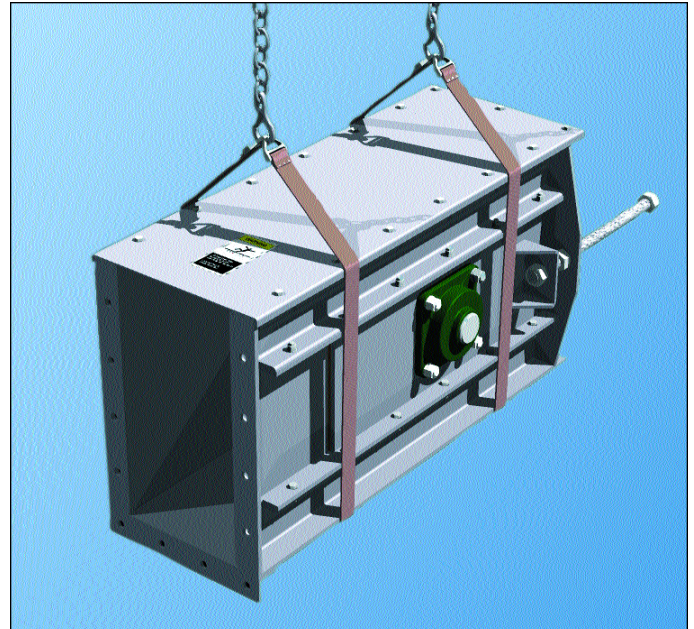




# DRAG CONVEYOR Flat Bottom



**RAIL RETURN**



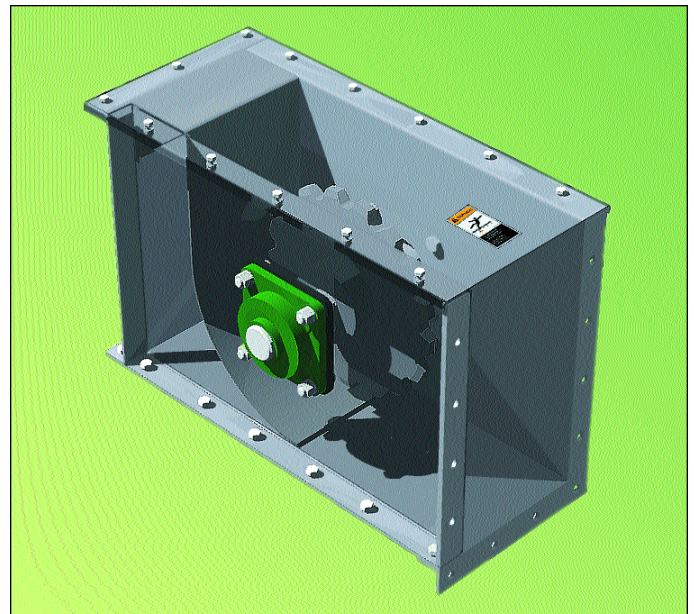
**FLAT BOTTOM TAIL TAKE-UP**

## STANDARD FEATURES

- Bolted Replaceable Bottom
- Bolted Flanged Covers
- Jig Welded Flight Attachment
- UHMW Flights
- Heat Treated Sprockets
- Rail Return System
- Flow Through Inlets
- Heavy Duty Backing Plate

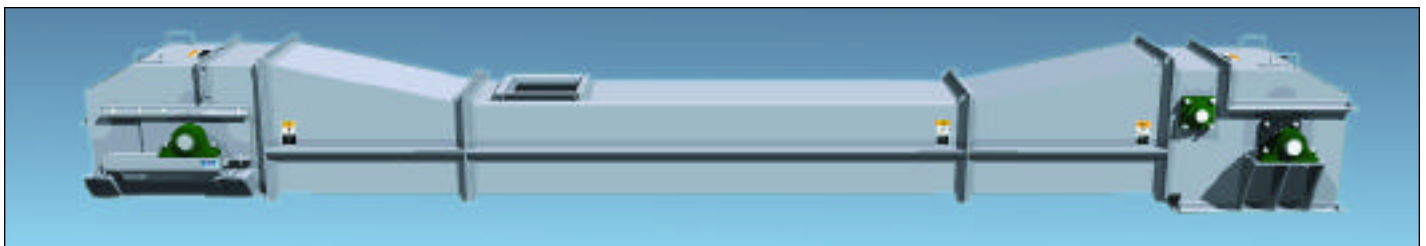
## POPULAR OPTIONS

- Intermediate Discharge
- Liners of Various Materials
- A.R. Steel Bottom Plate
- Controlled Feed Inlets
- Split Sprockets

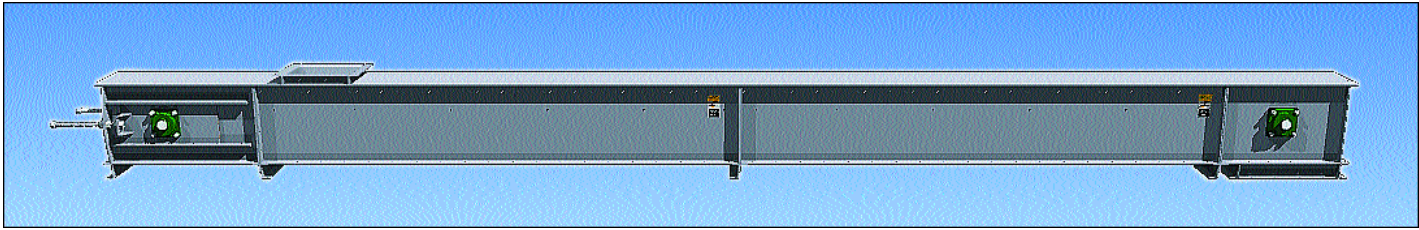


**SELF-CLEANING TAIL**

**SUPER DUTY CONVEYOR**



# DRAG CONVEYOR Flat Bottom



**FLAT BOTTOM CONVEYOR**

SERIES	1 FPM		100 FPM		125 FPM		150 FPM		175 FPM		200 FPM	
	CFH	RPM	CFH	RPM	CFH	RPM	CFH	RPM	CFH	RPM	CFH	RPM
1809	34	37	3375	37	4220	46	5025	55	5900	65	6750	74
2409	60	27	6000	27	7500	34	9000	40	10500	47	12000	54
2412	78	27	7800	27	9750	34	11700	40	13650	47	15600	54
2414	90	27	9000	27	11250	34	13500	40	15750	47	18000	54
2416	102	27	10200	27	12750	34	15300	40	17850	47	20400	54
2418	114	27	11400	27	14250	34	17100	40	19950	47	22800	54
3016	124	23	12400	23	15500	29	18600	34	21700	40	24800	46
3018	139	23	13900	23	17375	29	20850	34	24325	40	27800	46
3020	154	23	15400	23	19250	29	23100	34	26950	40	30800	46
3024	183	23	18300	23	22875	29	27450	34	32025	40	36600	46

**NOTES:**

1. Capacities are based on 100% loading with free-flowing grains at 48 pounds per cubic foot.
2. Selection of conveyors should be based upon material characteristics.
3. Capacities and speeds will vary for other types of materials and for materials conveyed at an incline.

Please consult *Martin* if you have any questions concerning your application.

MATERIAL THICKNESS & APROXIMATE SHIPPING WEIGHTS							
SERIES	ADJ. TAIL	WGT.	HEAD	WGT.	10'0" INTERMEDIATE		COVER
					STD. DUTY	WGT.	
1809	10 GA.	333	10 GA.	206	10 GA.	403	14 GA.
2409	10 GA.	432	10 GA.	277	10 GA.	460	14 GA.
2412	10 GA.	454	10 GA.	306	10 GA.	492	14 GA.
2414	10 GA.	467	10 GA.	315	10 GA.	514	14 GA.
2416	10 GA.	482	10 GA.	322	10 GA.	532	14 GA.
2418	10 GA.	497	10 GA.	335	10 GA.	544	12 GA.
3016	3/16	642	3/16	438	10 GA.	655	12 GA.
3018	3/16	655	3/16	452	10 GA.	679	12 GA.
3020	3/16	690	3/16	485	10 GA.	703	12 GA.
3024	3/16	749	3/16	613	10 GA.	745	12 GA.

**NOTES:**

1. Tail and head weights shown include bearings, shafts and standard sprockets.
2. Intermediate weights include return rails, and bolted covers.

**WARNING AND SAFETY REMINDER**

**LOCK OUT POWER** before removing covers, guards or before servicing. Exposed moving parts can cause severe injury.

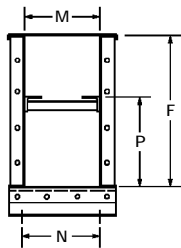
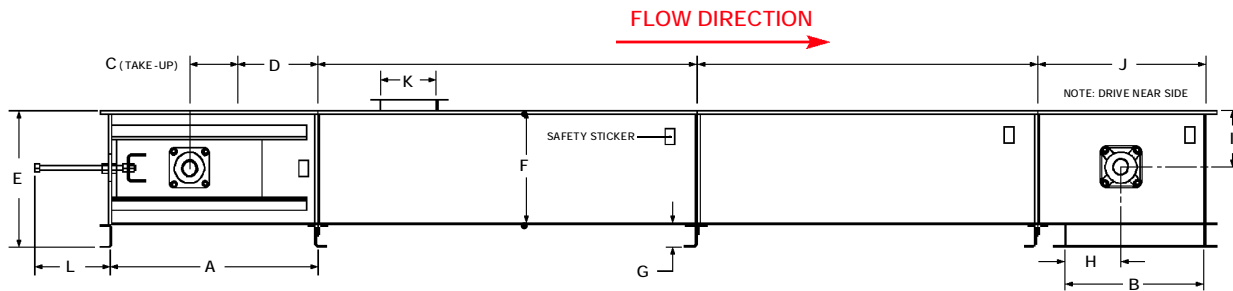
*Martin* offers a complete line of Flat Bottom Drags to handle capacities up to 36,600 CFH. *Martin* Super Duty Flat Bottom drags have been successfully used in applications with conveyors reaching lengths of over 660 feet.

The *Martin* Flat Bottom drag conveyor is especially suited for handling free flowing grains. When heavier abrasive materials need to be conveyed, contact *Martin* about our Mill Duty Drag conveyor with Forged Chain.

The *Martin* Flat Bottom drag conveyor is constructed with heavy-duty formed channel sides, with replaceable bolted bottoms and covers. The replaceable rail return system is offered with an optional rail liner when wear is a concern.

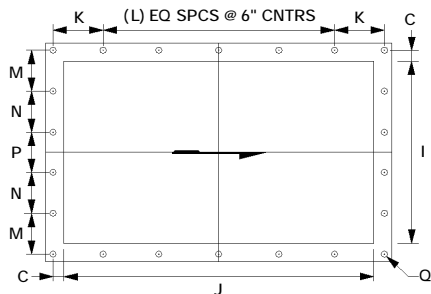


# DRAG CONVEYOR Flat Bottom

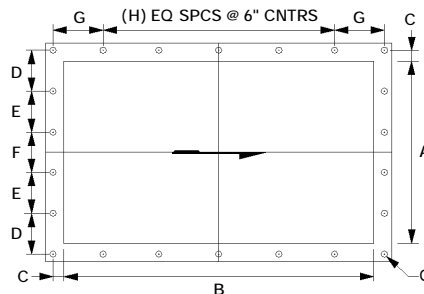


**FLAT INTERMEDIATE**

SERIES	A	B	C	D	E	F	G	H	I	J	K	L	M	N	P
1809	37	25	9	14	18-1/2	14-1/4	4	15	7-1/4	30	16	13	10	9-3/8	9
2409	37	25	9	14	24-1/2	20-1/4	4	15	10-1/8	30	16	13	10	9-3/8	16
2412	37	30	9	14	24-1/2	20-1/4	4	17-1/2	10-1/8	35	18	13	13	12-1/4	16
2414	37	30	9	14	24-1/2	20-1/4	4	17-1/2	10-1/8	35	20	13	15	13-1/2	16
2416	37	30	9	14	24-1/2	20-1/4	4	17-1/2	10-1/8	35	22	13	17	14-7/8	16
2418	37	30	9	14	24-1/2	20-1/4	4	17-1/2	10-1/8	35	25	13	19	16	16
3016	37	36	9	14	29-1/2	25-1/4	4	20-1/2	12-5/8	41	22	13	17	14-7/8	19-1/2
3018	37	36	9	14	29-1/2	25-1/4	4	20-1/2	12-5/8	41	25	13	19	16	19-1/2
3020	37	36	9	14	29-1/2	25-1/4	4	20-1/2	12-5/8	41	27	13	21	19-1/4	19-1/2
3024	37	36	9	14	29-1/2	25-1/4	4	20-1/2	12-5/8	41	31	13	25	20	19-1/2



**HEAD & INTERMEDIATE DISCHARGE**



**STANDARD INLET**

SERIES	A	B	C	D	E	F	G	H	I	J	K	L	M	N	P	Q
1809	7	16	1	4-1/2	***	***	3	2	10	25	3-1/2	3	4	***	4	7/16
2409	7	16	1	4-1/2	***	***	3	2	10	25	3-1/2	3	4	***	4	7/16
2412	10	18	1-1/4	4	***	***	4-1/4	2	13	30	4-1/4	4	5-1/8	***	5-1/4	7/16
2414	12	20	1-1/4	4-1/2	***	***	5-1/4	2	15	30	4-1/4	4	3-1/2	3-1/2	3-1/2	7/16
2416	14	22	1-1/4	3-1/4	3-1/4	3-1/4	3-1/4	3	17	30	4-1/4	4	3-3/4	4	4	7/16
2418	15	25	1-1/2	3-1/2	3-1/2	3-1/2	5	3	19	30	4-1/4	4	4-7/16	4-3/8	4-3/8	9/16
3016	14	22	1-1/2	3-1/4	3-1/4	3-1/4	3-1/4	3	17	36	4-1/2	5	3-3/4	4	4	7/16
3018	15	25	1-1/2	3-1/2	3-1/2	3-1/2	5	3	19	36	4-1/2	5	4-7/16	4-3/8	4-3/8	9/16
3020	17	27	1-1/2	4	4	4	6	3	21	36	4-1/2	5	4-7/8	4-3/4	4-3/4	9/16
3024	21	31	1-1/2	3-3/4	3-3/4	3-3/4	5	4	25	36	4-1/2	5	5-5/8	5-1/2	5-1/2	9/16

# DRAG CONVEYOR Flat Bottom



### STANDARD FEATURES

- Forged Chain and Steel Flights
- A.R. Steel Return Tray
- Spring Loaded Take-up
- Split Sprockets

### POPULAR OPTIONS

- A.R. Steel Side Liners
- By-pass Inlet
- Self-cleaning Tail

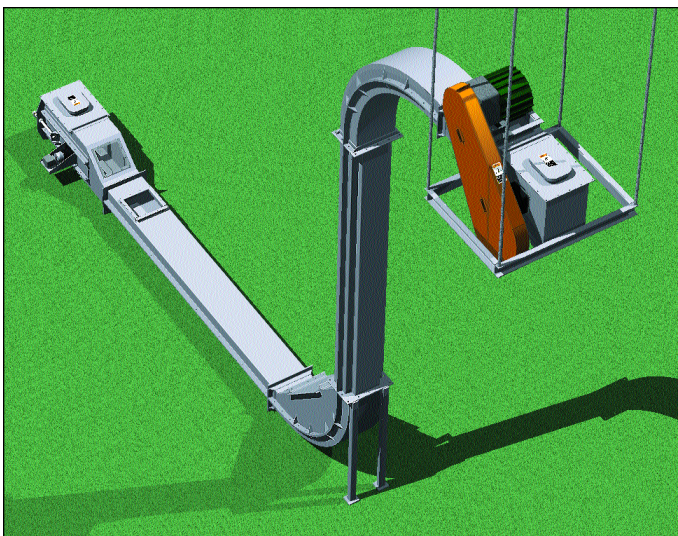
The *Martin* Mill Duty Drag is designed for handling heavy and abrasive materials, such as limestone, aggregate and sand.

Please consult *Martin* if you have any questions concerning your application.

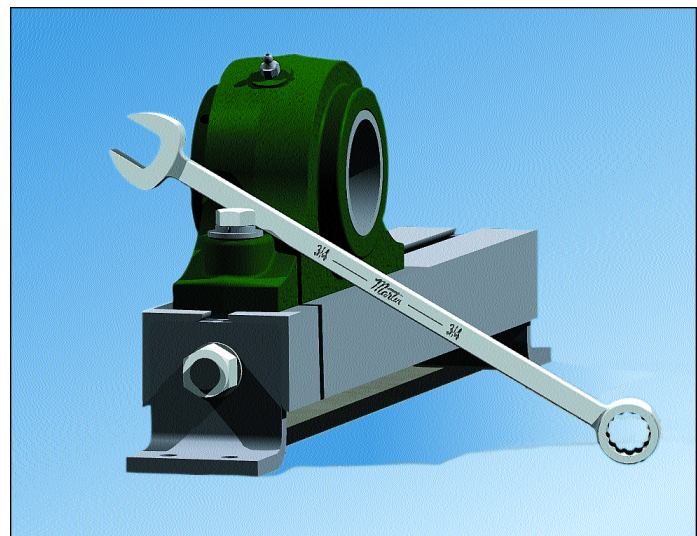
CAPACITIES AND SPEEDS					
SERIES	FPM	25 FPM		50 FPM	
	CFH	CFH	RPM	CFH	RPM
1200 MD	56	1400	8	2800	16
1600 MD	96	2400	7.5	4800	15
2000 MD	130	3250	5	6500	10
2400 MD	192	4800	5	9600	10

### WARNING AND SAFETY REMINDER

**LOCK OUT POWER** before removing covers, guards or before servicing. Exposed moving parts can cause severe injury.



**SPECIAL APPLICATION DRAG**



*Martin* -BUILT TAKE-UP