



MARQ's

New Innovations

HPE — Case Erector Bottom Sealer



Our High Performance Case Erector Bottom Sealer is available in a design that features added versatility while maintaining the high standard of quality and performance expected in a MARQ machine. Fitting into our family halfway between an HPE-215 and an HPE-NS, this mid-level speed equipment comes to you at an intermediate price and it's been described as "the best bang for your buck."

This machine provides positive case contact as adjustable bottom flight lugs and fixed top lug convey the erected cases squarely through the machine where the bottom flaps are sealed. This machine is designed for use with hotmelt glue or pressure-sensitive tape, and is flexible to run RSC, HSC, AFM, POL, BIB and FOL case styles.

Talk to a MARQ representative to see which method will work best for your application.





MARQ's

New Innovations

Each machine is designed based on the customer's application and case size.
 Machines are also available if the case range is above or below the stated minimum or maximum.

MACHINE FEATURES

Heavy-Duty Construction

- Frame is 3/16" steel construction
- Standard, medium and large frames available
- PHOSPHOTEX A-12, KEYKOTE 36 (plated parts)
- Designed for 24/7 operation
- Powder coated finish
- Polycarbonate guarding package (custom design requests also available)



Top & Bottom Vacuum Cups

- Secure and open knockdown case
- Consistently opens case squarely each time



Shuttle Hopper

- Knockdown cases feed automatically into machine
- Ergonomically friendly

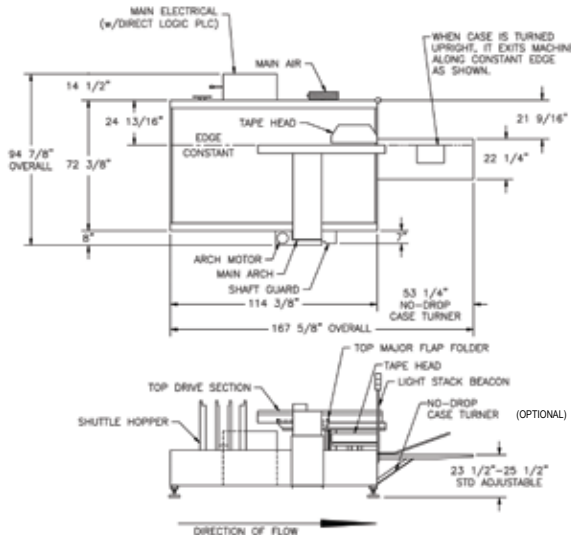


Optional Color Touch Screen

- Helps make changeovers and adjustments quick and painless

Flexible/Fully Automatic/Versatile

- Sets up and seals different case sizes
- Can be sealed with glue, tape, or a combination of both
- Top and bottom flight lugs guide case through machine
- Right-hand or left-hand controls
- Available tape heads include 3M, Bemis, Intertape, Central & Dekka
- Available glue units include Nordson, ITW, Mercer, & Slautterback



Components Available Locally

- Allen Bradley, Square-D, Numatics, Festo, Ross, Direct Logic, & Banner



Operation Conditions:

Use in dry, relatively clean environment at 40°F to 120°F (5°C to 49°C) with clean, dry boxes.

Power Requirements:

Electrical: 220 VAC (440 available) 60Hz, 160 watts, 3 Phase
 Pneumatic: 80 PSIG (6.5 BAR gauge pressure), 17.0 SCFM (11.89 M/h 21 °C, 101kPA) maximum at maximum cycle rate

*Machine should not be washed down or subjected to conditions causing moisture condensation on the components.
 Optional stainless steel construction with NEMA 4 for washdown environments is available.*

Operating Rate:

Up to 30 cases per minute depending on the case length.

Case Specification:

175 to 275 PSI bursting test, single wall. A, B or C flute

Standard Frame Case Size:

Length 10.00" min. 20.00" max.
 Width 8.00" min. 19.00" max.
 Height 6.00" min. 15.00" max.

Medium Frame Case Size:

Length 10.00" min. 40.00" max.
 Width 8.00" min. 22.00" max.
 Height 6.00" min. 24.00" max.

Standard Knockdown Size:

Length 16.00" min. 35.00" max.
 Width 12.00" min. 27.00" max.

Medium Knockdown Size:

Length 18.00" min. 48.00" max.
 Width 13.00" min. 40.00" max.

For more information on additional sizes or custom machine size please e-mail questions to info@marq.net or call 1-800-998-4301

MARQ PACKAGING SYSTEMS, INC.

3801 West Washington Avenue • Yakima, Washington 98903 • 509-966-4300 • Fax: 509-452-3307 • www.marq.net