



PHONE 421-7007

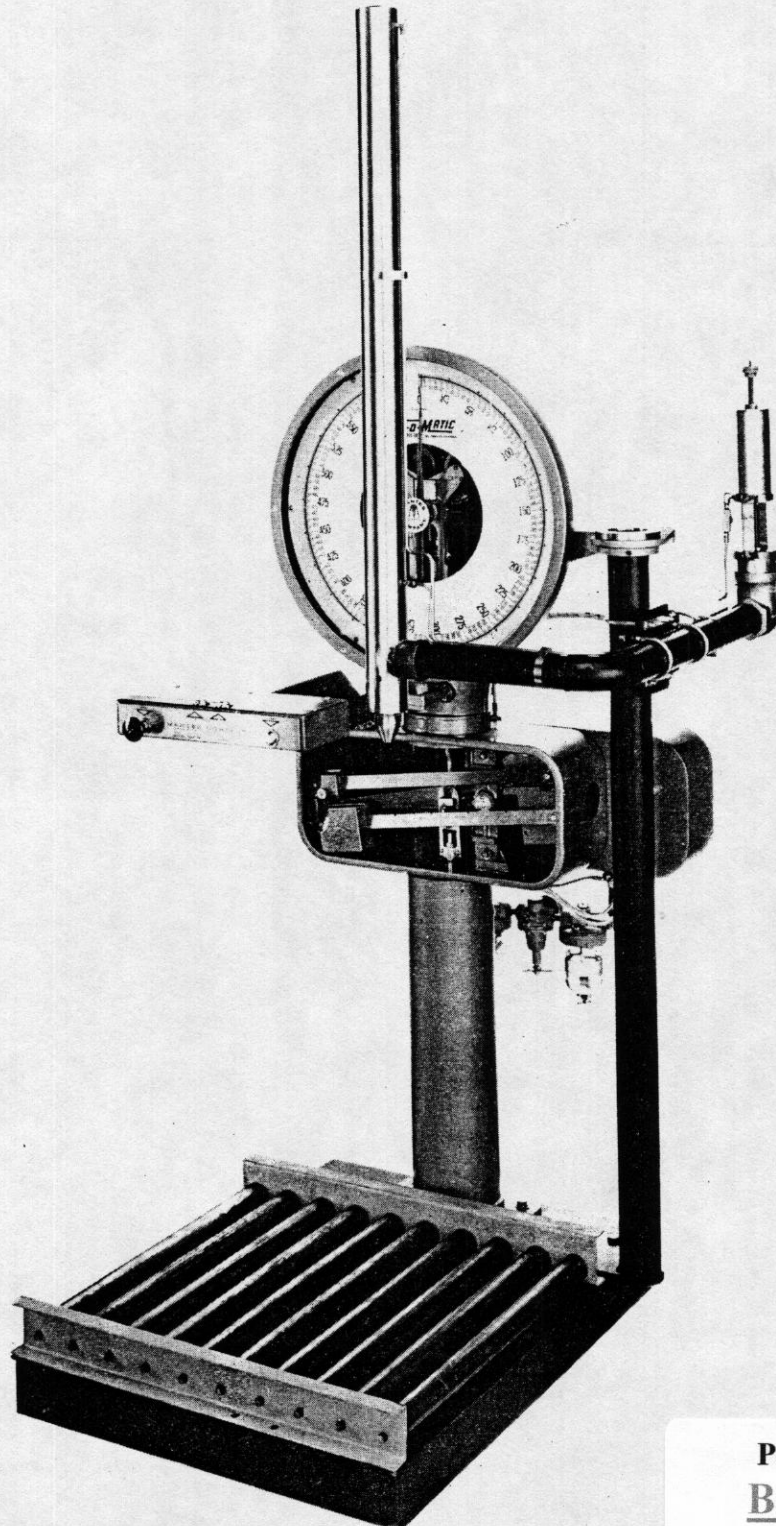
AREA CODE 415

THE MANTES CO.

SPECIALTY PRODUCTS DIVISION
PRECISION FILLING AND WEIGHING EQUIPMENT

489 SIXTH STREET • SAN FRANCISCO • CALIFORNIA 94103

MODEL 16-MSSF



Packaging - Processing
Bid on Equipment

1-847-683-7720
www.bid-on-equipment.com



THE MANTLES CO.

SPECIALTY PRODUCTS DIVISION
PRECISION FILLING AND WEIGHING EQUIPMENT

489 SIXTH STREET • SAN FRANCISCO • CALIFORNIA 94103

SEMI-AUTOMATIC DRUM FILLER SUB-SURFACE LANCE ATTACHMENT

MODEL 16-MSSF

DESCRIPTION AND SPECIFICATIONS

This unit should be used to fill low viscosity foaming products.

1. Dial capacity - 600# x 1/2#, 750# x 1/2#, or 1000# x 1#.
2. Platform size - 30" x 30"
3. Inlet pipe size - 2" I.P.S.
4. Flow control valve - 2" I.P.S.
5. Sub-surface lance discharge size 1-3/4" O.D.
6. Semi-automatic air operated taring device.
7. Flow of product controlled thru preliminary valve (adjustable) and final cut-off valve (lance).
8. Pneumatically operated. Requiring 80 - 125# P.S.I.G. air pressure - air expended 0.6 cubic feet per cycle.
9. Explosion proof - no electrical power required.
10. Average fill rate for 55 gallons = 28 seconds for kerosene under 40# P.S.I.G. at 100°F.
11. Filling accuracy on above figures guaranteed ± 1 lb.
12. Anticipated accuracy ± 8 ozs.
13. Unit will fill 1/4, 1/2 and full drums.
14. Foot valve seal on lance is Teflon, all other packing is standard 'O' ring.
15. Unit fills to a net after operator compensates for differential in tare weight only. This is accomplished thru air pilot valves.
16. Visual indication of net fill and gross shipping weight.

SPD 1566

Packaging - Processing
Bid on Equipment

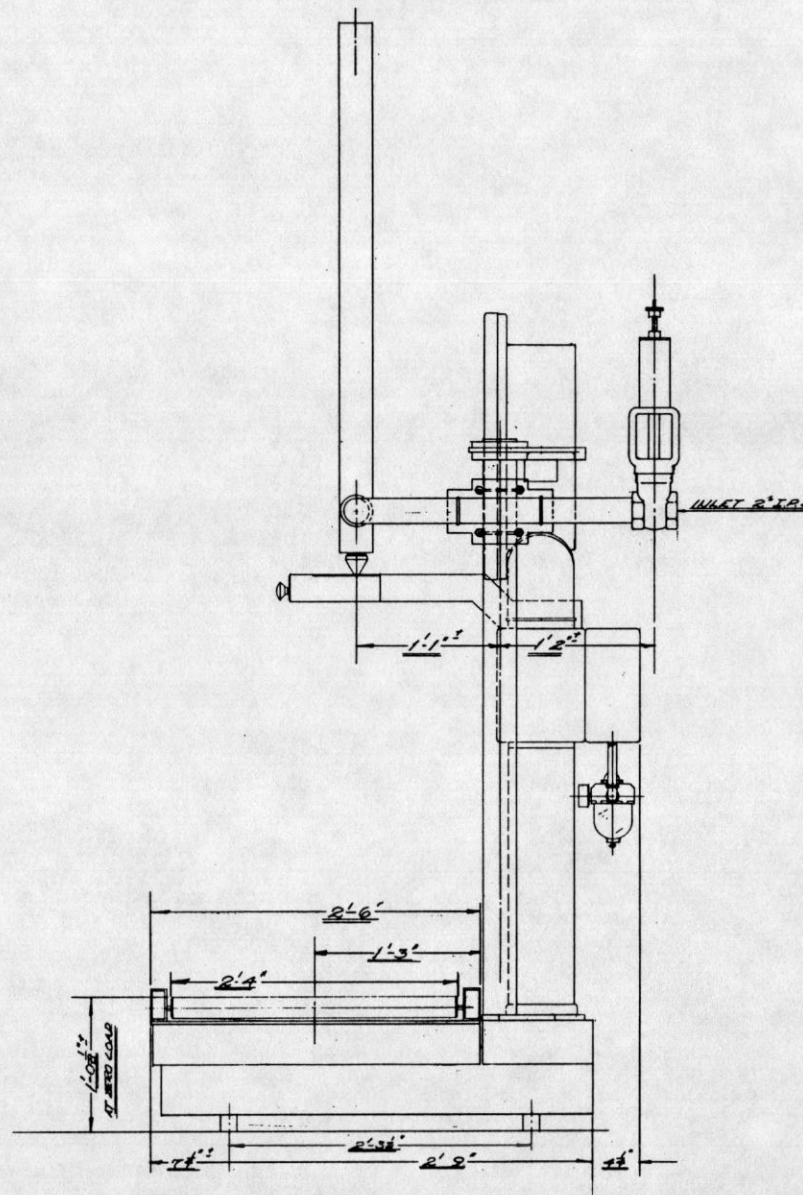
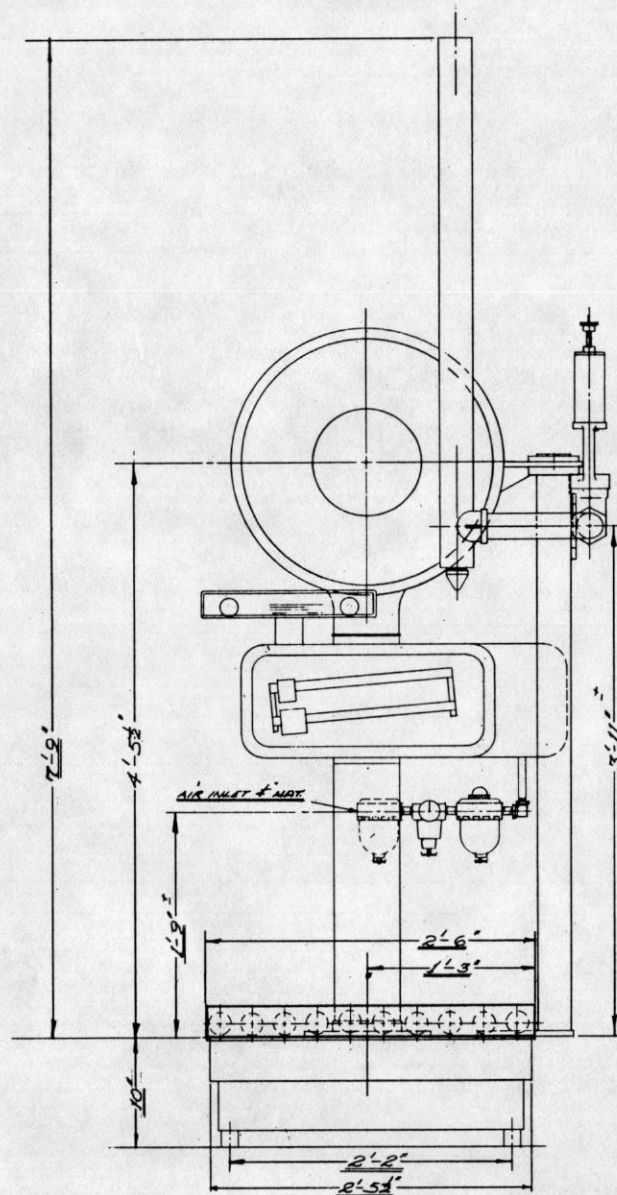
1-847-683-7720

www.bid-on-equipment.com

**Packaging - Processing
Bid on Equipment**

1-847-683-7720

www.bid-on-equipment.com



CONVEYOR SECTION:

30" x 30" SECTION
1.9" DIA. ROLLERS
ROLLERS 26" LONG
ROLLERS ON 3" C/P
MILD STEEL

SPECIALTY PRODUCTS DIVISION

NOTE: CONVEYOR SECTION
OPTIONAL.

<u>THE MANTE'S COMPANY</u>			
109 6TH ST. SAN FRANCISCO CALIFORNIA U.S.A.			
REPLACES DRAWING NO.	SCALE	DRAWN BY	
41066	AS SHOWN	RT/S	
	7/16"	REVISED	10-7-66
LINK DNG-MODEL 16-HSSF SUB-SURFACE DRUM FILLER. (PETRO LUM LANCE)			
DATE	APPROVED BY	DRAWING NUMBER	
10-7-66		41066/A	