



X^R X-ray Inspection Systems

www.loma.com

Entry Level X-ray detection for the food and packaging industries



- **Low cost** Priced more in line with metal detectors than traditional X-ray machines
- **Easy to use** Simple metal detector type control panel, set up in less than 2 minutes
- **Sensitive** Automatic tracking, which compensates for variations in the product
- **Multi functional** Missing product, area and volume measurement capability
- **Compact** Standard system length at 1.85m
- **Reliable** Heavy duty components, sealed tank—no re-circulating coolants

Packaging - Processing
Bid on Equipment
1-847-683-7720
www.bid-on-equipment.com

Metal Detection

X-ray Inspection

Checkweighers

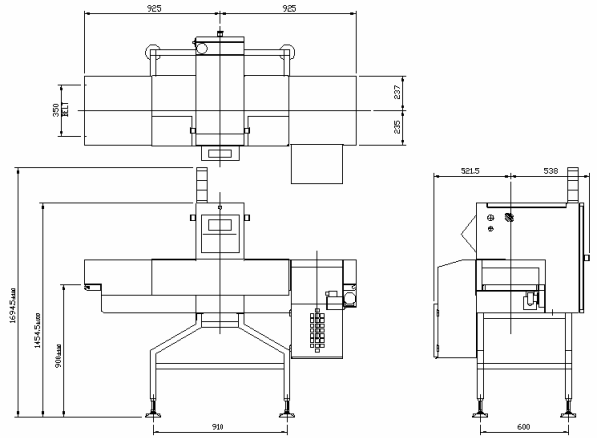
Data Capture

Designed to Survive



X-ray Inspection Systems

Finish:	304 stainless steel with bead blast finish
Typical Line Height:	900mm ± 50mm
System Length:	1850mm
Belt Width:	300mm
Supply Voltages:	110/1ph/60Hz N+E or 230/1ph/50Hz N+E
Air Supply:	5 to 8 bar for reject and (if fitted) vortex (80 to 100 psi)
Reject Options:	Signal, Air Blast Pusher
Environment:	IP65 with vortex option IP 55 without vortex option
Belt Type:	Flat (food quality) belt
Standard Inclusions:	50 product memory, Adjustable feet, Variable speed
Options:	Bar code scanner for auto set-up, Serial printer port, Survey meter, Lockable wheels, Vortex cooler, Reject and Bin full confirmation



Technical Specification

- Embedded processor
- Backlit LCD touch screen controls
- Auto set up
- Self diagnostics
- Scaleable High Gain array
- 0.8mm x 0.8mm diode array
- High performance and efficient, variable power, X-ray
- Totally integrated and modular system with standard off the shelf components
- Complies fully with radiation emission standards
- Air cooled and temperature monitored X-ray tube
- 10 - 70m/min (30 - 230ft/min) variable speed belt

Loma Systems, Summit Ave, Southwood, Farnborough, Hampshire, GU14 0NY

Tel: +44 (0)1252 893300

Fax: +44 (0)1252 513322

Email: sales@loma.co.uk

Packaging - Processing

Bid on Equipment

1-847-683-7720

www.bid-on-equipment.com

Designed to Survive