



NeedleSearch Conveyor

www.loma.com

Versatile, proven metal detection systems for the textile and footwear industries



- **Versatile** Range aperture sizes to accommodate all types of garments and footwear
- **Easy to use** Intuitive touch screen with up to 50 product memories, bar code reader option
- **Sensitive** Designed for industry standard pin-head detection in garments and footwear
- **Stable** Unique search head design and filtering provides high levels of noise immunity
- **Reliable** High quality industry proven electronic components and conveyor parts

Packaging - Processing

Bid on Equipment

1-847-683-7720

www.bid-on-equipment.com

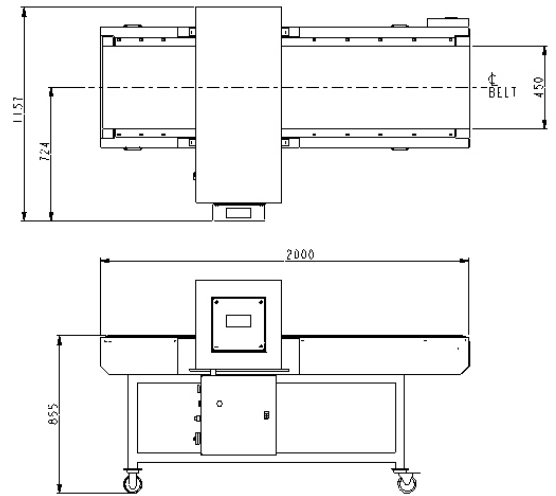
X-ray Inspection

Checkweighers

Data Capture

Designed to Survive

Finish:	Search Head - Aluminium with painted finish Conveyor - Stainless steel with bead blast finish	
Standard Line Height:	Wheels: 855mm +/- 50mm 34" +/- 2"	
System Length:	2,000mm	79"
Belt Width:	500mm	20"
Drive:	Fixed speed AC motor @ 27m/min 90ft/min	
Supply Voltages:	220V 1ph N+E or 110V 1ph N+E	
Reject Types:	Stop on detect with alarm	
Protection:	IP 54	
Belt Type:	Flat White PU Belt	
Options:	Bar code reader, Product counting sensor, Network interface	



Technical Specification

AM model for detection of all metals

FM model for detection of ferrous needles when the product has non ferrous metal present, e.g. zippers and fasteners

Classification of metal type

Auto self check

Electronic reset

Multi-lingual display

Full diagnostic messaging

Battery back up of stored data

Date and time stamped reject statistics

AM aperture sizes

FM aperture sizes

550 x 125mm

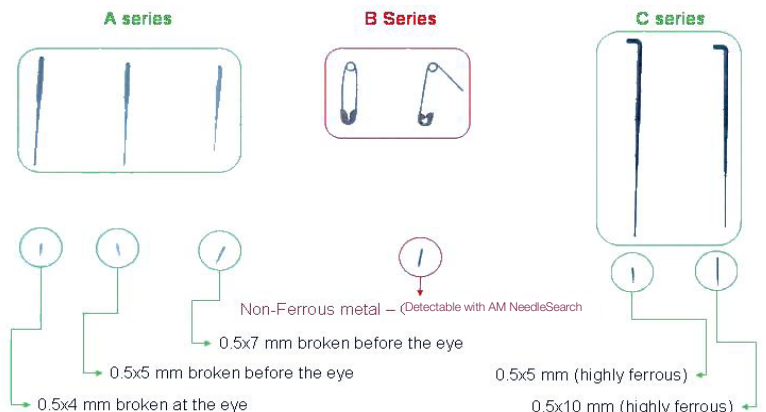
550 x 125mm

550 x 175mm

550 x 175mm

550 x 229mm

Broken Needle Examples



Loma Systems, Summit Ave, Southwood, Farnborough, Hampshire, GU14 0NY

Tel: +44 (0)1252 893300

Fax: +44 (0)1252 513322

Email: sales@loma.co.uk

Packaging - Processing

Bid on Equipment

1-847-683-7720

www.bid-on-equipment.com

Designed to Survive