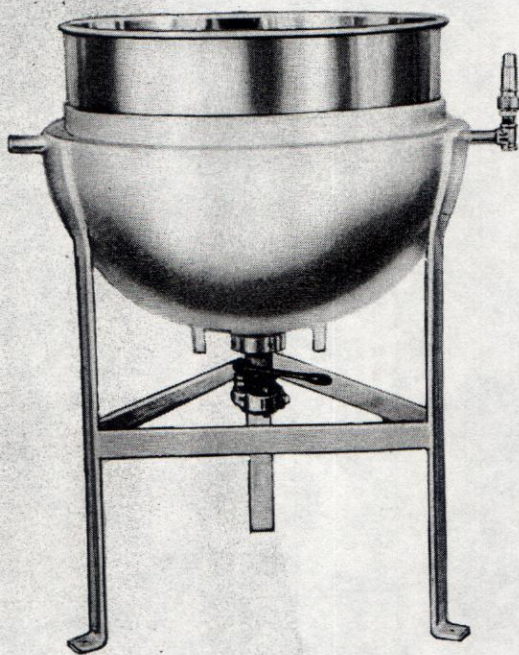


# LEE

*Corrosion-Resistant*  
**HEAVY DUTY**  
*Kettles*

- ★ **STAINLESS STEEL**
- ★ **PURE NICKEL**
- ★ **MONEL METAL and other Corrosion-Resistant Alloys**



Style D

## Two-Thirds Super-Jacketed Stationary

LEE Super-Jacketed Kettles cut your operating schedules on every process where alternate heating and cooling is necessary. Separate jacket inlets and outlets, provided for each medium, make the change-over from heating to cooling quick and convenient. No transfer of product from the kettle is required to make the change. The larger jacket increases the heating or cooling area approximately 12% and speeds your operations accordingly.

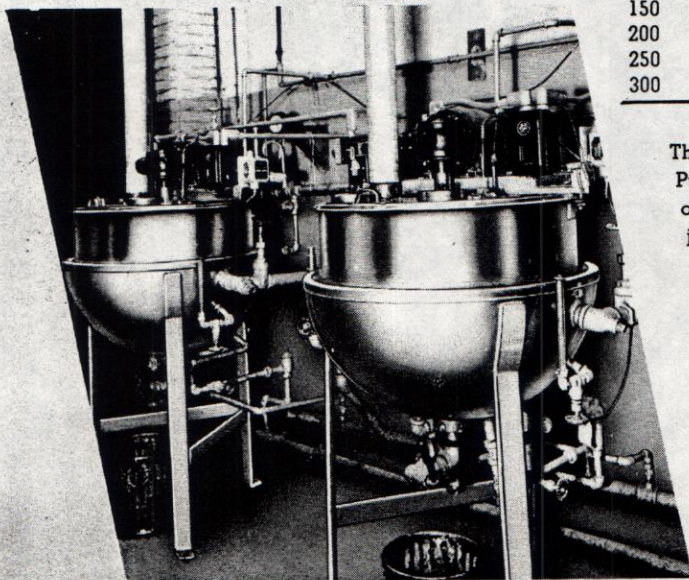
Super-Jacketed Kettles contain all of the construction features of the LEE Heavy Duty Kettles described on page 5, plus the extra large jacket and additional inlet and outlet connections. Construction is entirely by welding with all seams ground smooth and the entire interior given a circular ground satin finish.

Capacity Gallons	Inside Diam.	Inside Depth	Height Overall	Diam. Outlet	Diam. Steam Conn.	Diam. Water Inlet	Diam. Water Overflow	Weight Crated Pounds
10	18"	14"	36½"	1½"	¾"	¾"	1"	143
15	18"	16¾"	37¼"	1½"	¾"	¾"	1"	153
20	20½"	18"	38½"	1½"	¾"	¾"	1"	173
25	24"	18"	38½"	1½"	¾"	¾"	1"	195
30	24"	20"	40½"	1½"	¾"	¾"	1"	202
40	26"	22"	42½"	1½"	¾"	¾"	1"	214
50	30"	23"	43½"	1½"	¾"	¾"	1"	245
60	32"	24"	44½"	1½"	¾"	¾"	1"	289
75	32"	27½"	48"	1½"	¾"	1"	1½"	299
80	36"	25"	45½"	2"	¾"	1"	1½"	342
100	36"	30"	50½"	2"	¾"	1"	1½"	392
125	38"	34"	54½"	2"	¾"	1"	1½"	450
150	42"	34½"	55"	2"	1"	1½"	2"	543
200	48"	36"	56½"	2"	1"	1½"	2"	674
250	52"	39"	56½"	2"	1"	1½"	2"	811
300	54"	42"	62½"	2"	1"	1½"	2"	886

The exterior presents an easily cleaned mirror polish. Stainless Steel, Pure Nickel or Monel Metal is used selectively depending on the type of use. Where processing mediums are steam or water, boiler plate jackets may be safely used.

Standard equipment provides quick-acting bronze gate valve, approved safety valve and aluminum finished steel stand. Standard construction is fully approved for working pressures of 40 lbs., 90 lbs., or 125 lbs. Special equipment including hinged or lift-off covers and Stainless Steel, Pure Nickel or Monel Metal valves and stands can be supplied on request.

Lee Super-Jacketed Kettles can also be supplied in other sizes or working pressures, to your specifications, at slight additional cost.



**Packaging - Processing**  
**Bid on Equipment**

1-847-683-7720

www.bid-on-equipment.com