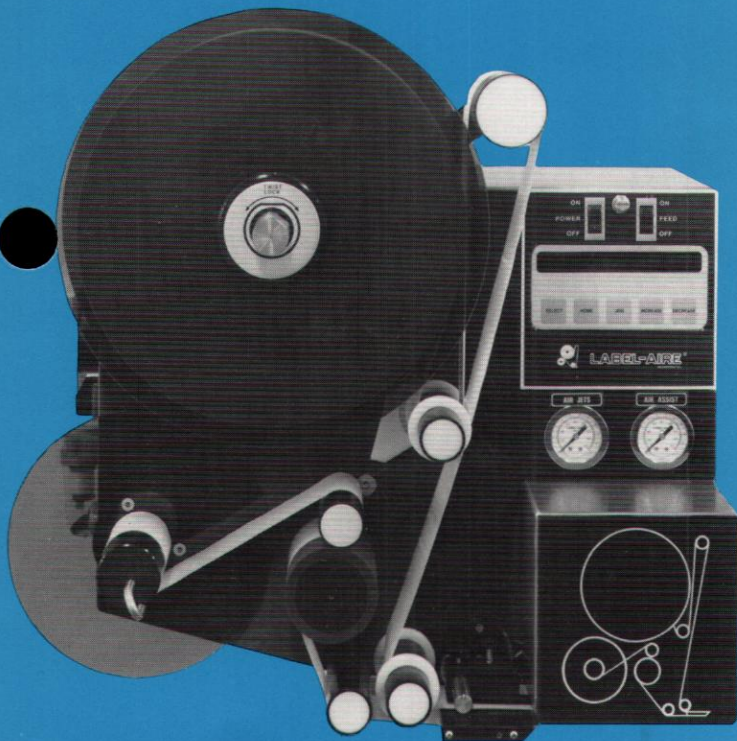


### High speed pressure-sensitive labeling that's both rugged and reliable.



- High speed label application of up to 1500 linear inches of label web per minute is combined with an exceptional placement accuracy of  $\pm 1/32''$  in the Label-Aire 2111 with its unique air blown method of application.

- Products may be labeled in any attitude (top, side or bottom) through this highly-efficient non-contact application method.

- Labeling errors such as double labeling or a missed product are eliminated with peel tip sensing which further assures accurate placement of a label on every product.

- Consistently reliable operation is insured by microprocessor controls which allow repeatable settings and constant monitoring.

- The 2111 will accept a wide variety of label sizes without changing parts as a result of the system's advanced honeycomb grid at the labeling point.

- For fast cleaning and replacement, the "pop-off" guide rollers are easily removed from the 2111 assembly.

- The 2111 is movable from one production line to another when mounted on Label-Aire's castered T-base.

- The 2111's rugged corrosion-resistant, stainless steel and anodized aluminum housing provide durability and maintenance-free operation even in hostile environments.

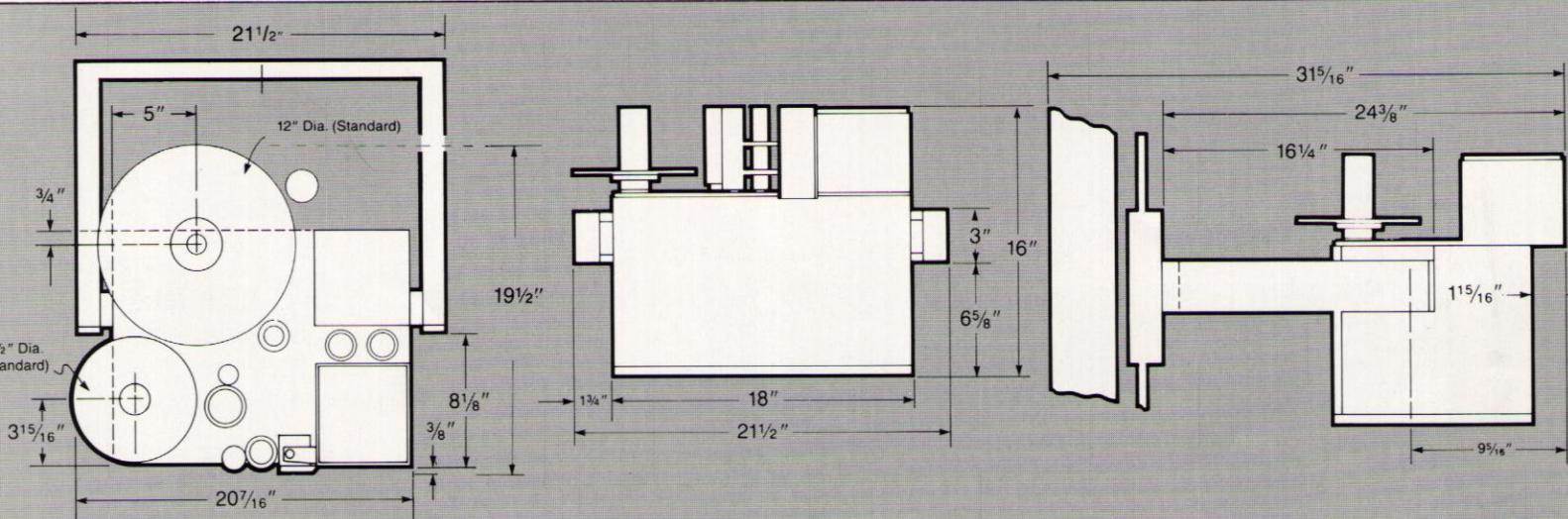
- For over 20 years, Label-Aire has maintained a reputation for engineering and manufacturing leadership. This unrivaled performance is supported by convenient service centers throughout North America.

**Packaging - Processing**  
**Bid on Equipment**

1-847-683-7720

[www.bid-on-equipment.com](http://www.bid-on-equipment.com)

# Specifications: STANDARD MOBILE LABEL APPLICATOR MODEL 2111



#### Length:

1'-11"

#### Overall Width:

1'-4"

#### Overall Height:

1'-8"

#### Weight:

110 lbs.

#### Electrical:

115 volts AC, 60 cycle, 5 amps.  
Overload protection built-in  
(220 volts AC, 50 cycle optional).

#### Electronics:

Standard C-MOS circuitry.  
Microprocessor controlled module  
optional.

#### Power Supply:

Completely solid state, located in a  
pull-out modular drawer.

#### Air Requirements:

2 cfm at 60 psi to 90 psi for most  
applications.

#### Product Sensing:

Photoelectric.

#### Label Roll Size:\*

12" maximum O.D., wound on  
3" I.D. core.

#### Label Styling Requirements:

Die-cut, waste removed, with  
minimum of 1/8" separation be-  
tween labels in running direction.

#### Label Placement Accuracy:

Label placement can be held to  
 $\pm 1/32$ " when labels are produced  
to specifications and production  
handling is controlled.

#### Standard Label Sizes:\*

Maximum 4" x 5-1/2"  
Minimum 3/4" x 3/4"

#### Labeling Speed:

Up to 1500 linear inches of label  
web per minute.

\*Other sizes available.

Manufactured in the U.S.A.

Protected by one or more U.S. and foreign patents.



3801 Artesia, Fullerton, CA 92633  
(714) 994-5400 • Telex 655-490

**Packaging - Processing**  
**Bid on Equipment**

1-847-683-7720

[www.bid-on-equipment.com](http://www.bid-on-equipment.com)