

# MODEL SE680 ELECTRIC AUTOMATIC MARKER

The Kwikmrk Model SE680 is an all electric heavy-duty marker designed to produce clear, legible imprints on virtually any type of uniform surface including glass, metal and plastic. It can be installed easily at nearly any point on your conveyor line for vertical (top or bottom) or horizontal marking and will imprint up to 200 moving parts per minute.

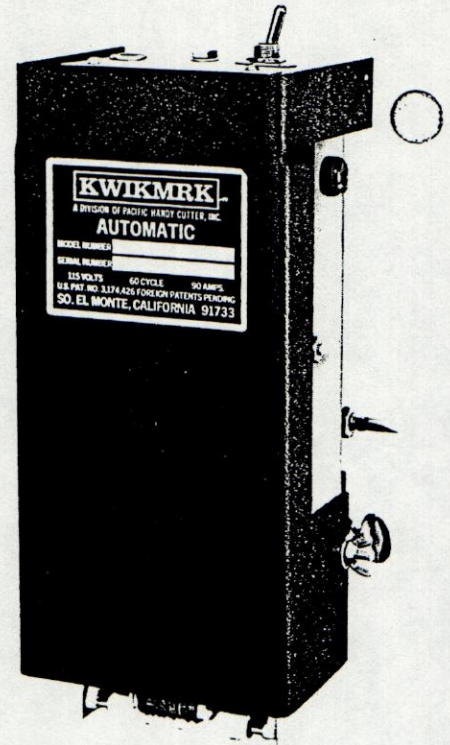
The Model SE680 can be adjusted to mark a wide variety of product shapes and sizes; however, the imprint area must be relatively flat. For best results, items of a uniform size or shape involved in a specific run should not vary dimensionally more than  $1/16$  inch in the marking area.

## HOW THE MODEL SE680 OPERATES

An actuating switch is tripped by the product to be marked as it travels along the conveyor line. This in turn activates the solid state control module signaling the head to cycle downward marking the item as it passes. Return spring action moves the head upward into position for the next marking cycle. The actuating switch, whether line mounted for automatic operation or manually operated for semi-automatic marking, is the only timing device needed to control the marking action. The standard switch furnished with each machine requires approximately 3 ounces of pressure to activate the marking cycle.

## SPECIAL FEATURES (Standard Equipment)

- ✘ Solid state electronic control module for positive marking action and long life.
- ✘ Automatic inker reduces down time by permitting longer continuous runs without re-inking.
- ✘ Micromatic adjustment for precise control of marking head travel and uniform, clear impressions.
- ✘ Hinged "swing-up" cover for easy marking head changes, lubrication and maintenance of internal parts.



## SPECIFICATIONS

Dimensions:

Height:

(Overall, including Micromatic adjustment control) 11 $\frac{1}{2}$ " to 13 $\frac{1}{2}$ "

Depth:

5 $\frac{1}{4}$ "

Width:

5 $\frac{7}{8}$ "

Cover Arc:

10 $\frac{3}{8}$ "

Weight:

Marker:

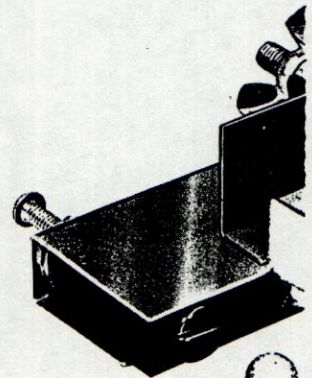
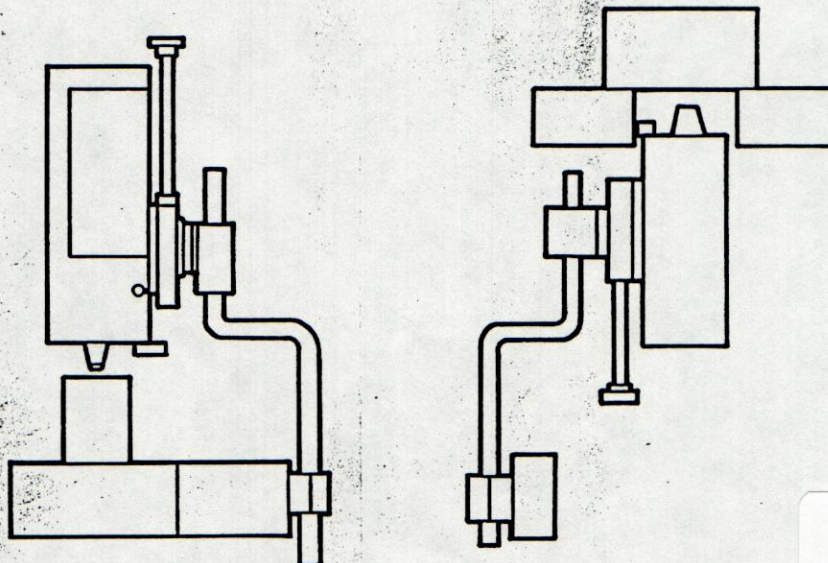
10 lbs. 8 oz.

Mounting Bracket:

4 lbs. 8 oz.

Power Requirement:

110-115 VAC - 60 Hz



**Packaging - Processing  
Bid on Equipment**

1-847-683-7720

www.bid-on-equipment.com