

KRONES Lavatec E2

Single-end washer for the low and medium output range

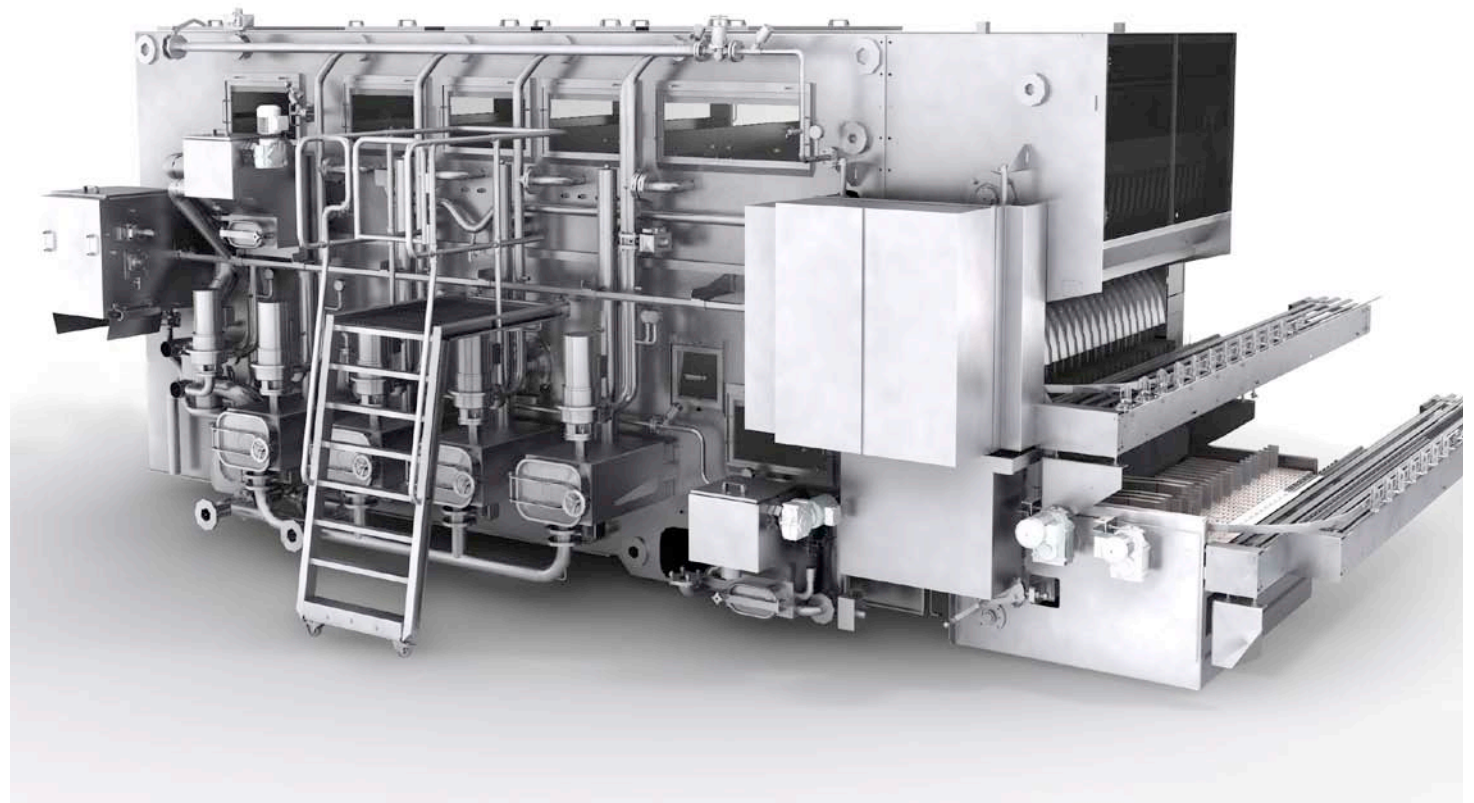


Even smaller and more inexpensive

KRONES Lavatec E2

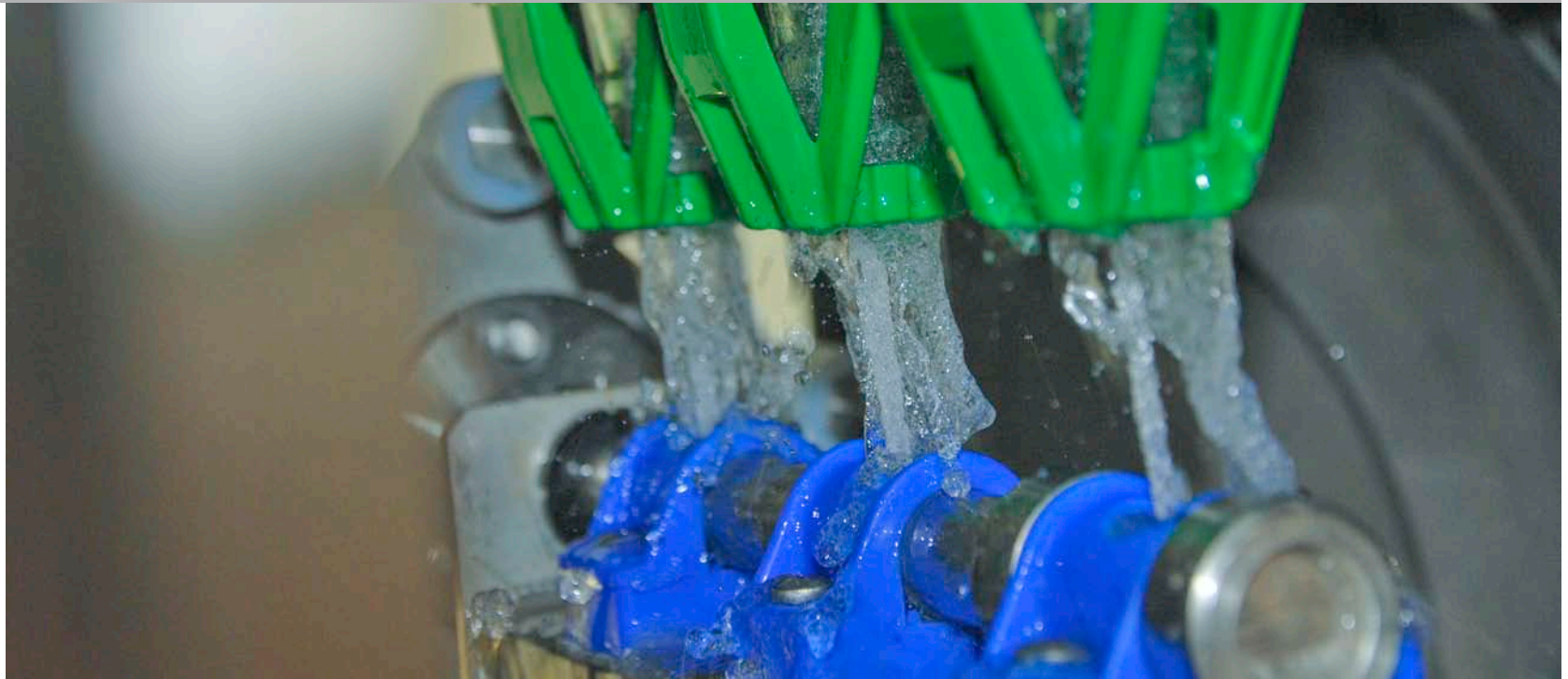
The single-end machines from the Lavatec E2 range are an impressive example of how it is possible to achieve optimum results with very little effort. The washers are so compact that they can even be installed on small areas. Since they guide the bottles through their interior on a horizontal loop, the bottles still remain in the caustic long enough to make them perfectly clean.

And with the Lavatec E2, a machine has now finally been created which can make use of these advantages for companies with a low bottle throughput. For the smallest and most recent member of the Lavatec series has been especially designed for the low and medium output range. This can be mainly seen in the low investment and operating costs. At the same time, the sophisticated cleaning process, which uses newly developed double nozzles, for example, is by no means inferior to that in a large machine!



Principle of operation

In accordance with the single-end principle, the bottles are fed and discharged at the same side and with maximum biological safety. The pre-cleaning system heats the bottles and removes coarse contamination. Subsequently the bottles run through the caustic bath in horizontal loops, in order to completely wash away dirt or labels. Before the bottles leave the machine, they are cooled in the post-treatment zones with a small quantity of fresh water and freed of any remaining dirt or caustic residues.



Application

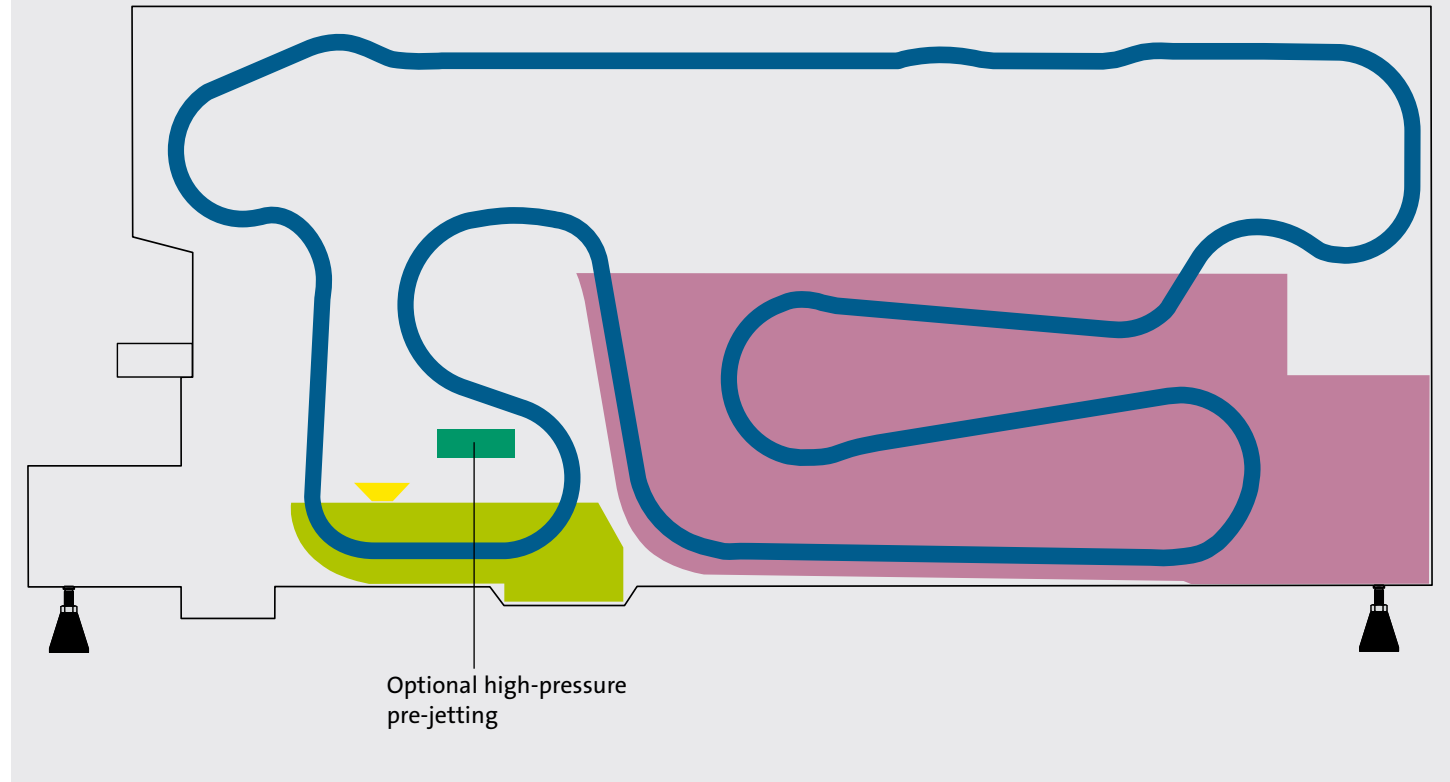
Food-grade cleaning of returnable containers made of glass and plastic.

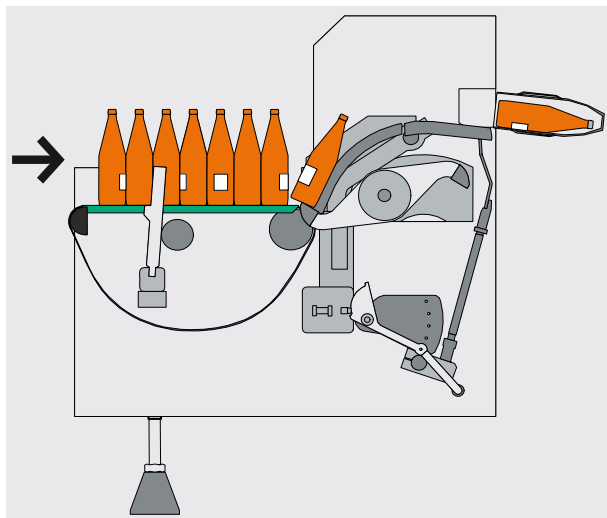
Output range

	Output (bottles per hour)	Residual draining	Pre-treatment stages	Main caustic/ post caustic	Caustic spraying
E2	2,000 – 26,000	X	1/2	X	X

Design features

- Modular design
- Entire housing walls and water section in stainless steel
- The water zones are insulated
- Stable, robust construction
- Caustic submerge bath with double label removal
- Steel bottle carriers with plastic insert
- Automatic bath filling system
- Conductivity measured in the main caustic bath
- Weekly operation
- Synchronous drives
- Touch-screen operation
- Optimum accessibility

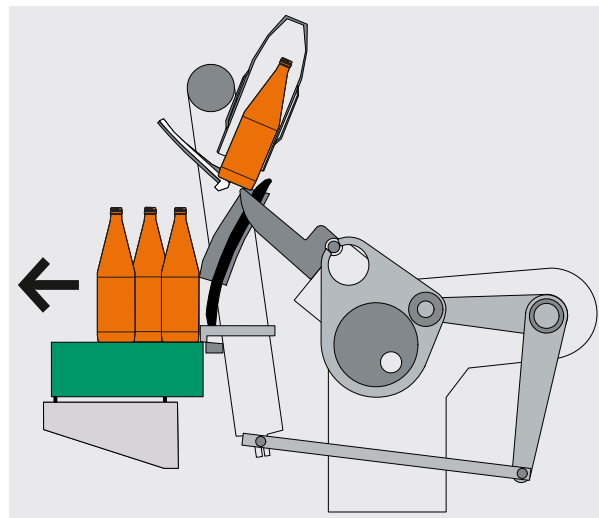




Bottle infeed

Infeed

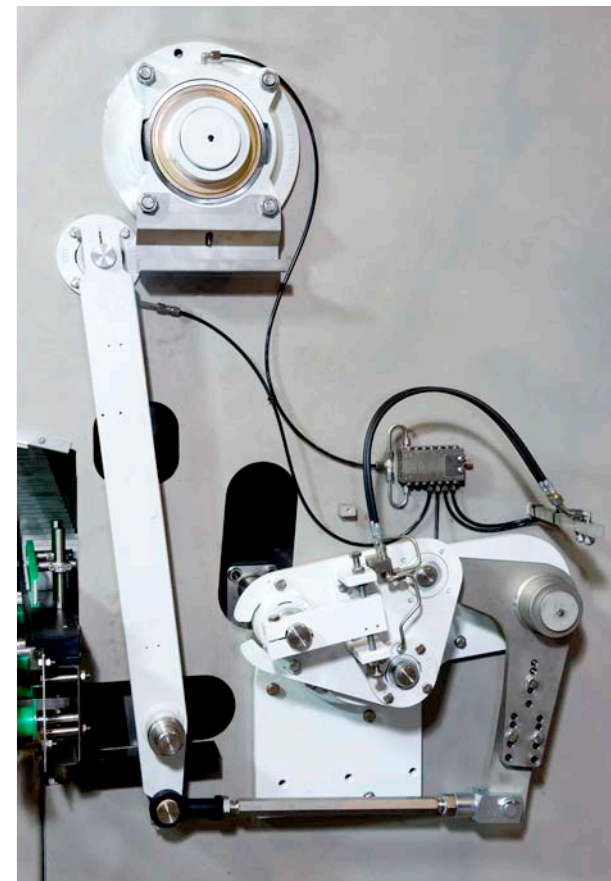
During the infeed, fingers pick up the bottles from the conveyor and transport them safely and precisely to the bottle carriers.



Bottle discharge

Discharge

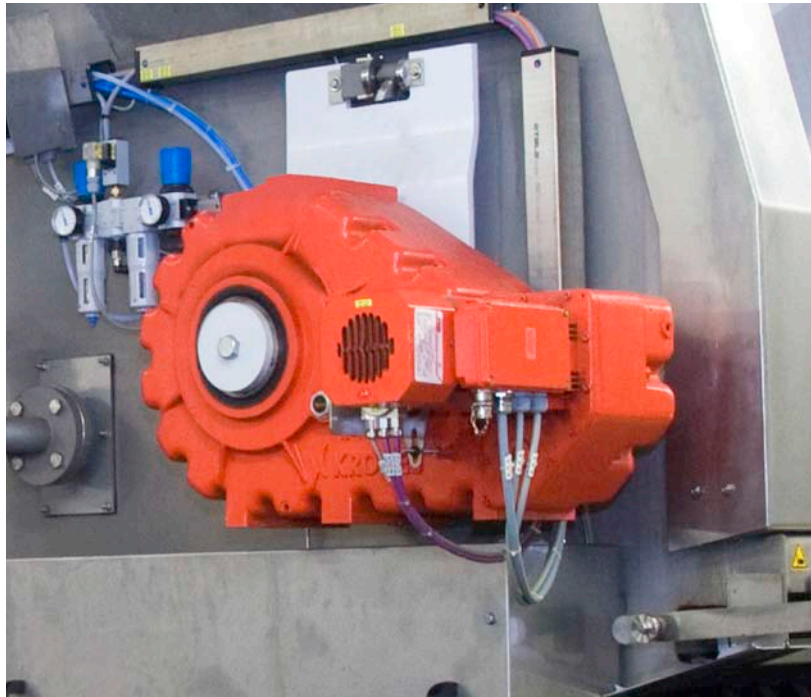
Special discharge fingers transport containers of all shapes and sizes without allowing them to fall and with little noise onto the conveyor.



Mechanical components at the discharge

Drive technology

- The high-performance synchronous drive motors, together with a central frequency converter, enable the precise control of the main chain and gentle transportation of the bottle.
- Bush conveyor chains with plastic bushes achieve an immense reduction in the frictional forces.
- All drive sprockets and end-turning devices are divided - this is a significant advantage for later maintenance jobs.



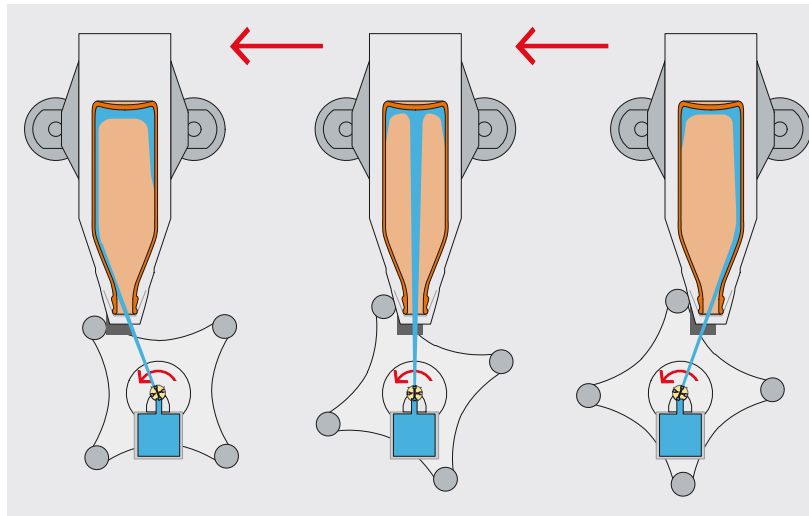
Synchronous drive motor



Split sprockets facilitate maintenance

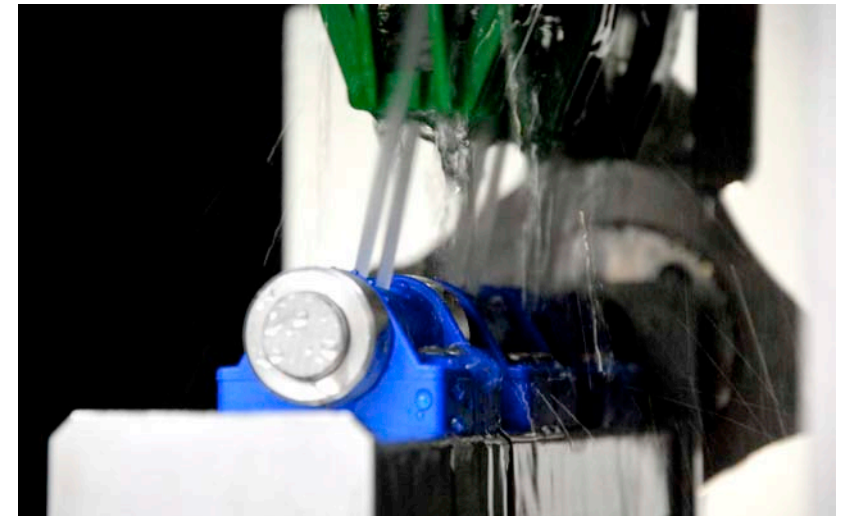
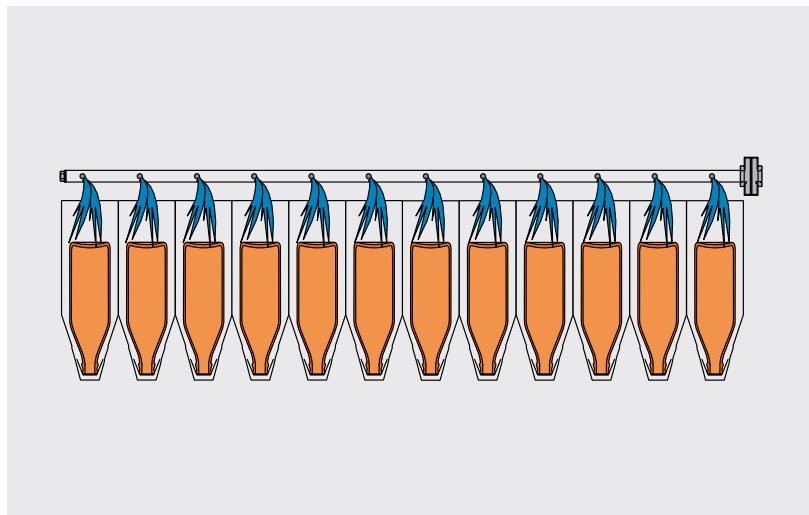
Bottle interior cleaning

Rotating spraying nozzles clean the insides of the bottles from different angles of incidence.



Bottle exterior cleaning

Patented jetting units spray the bottle exterior from above.

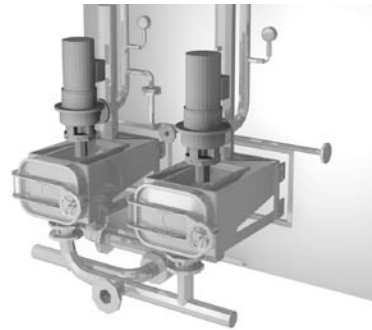


Lateral bottle exterior cleaning

In the post-caustic sections, newly developed, patent-pending double nozzles are used for the first time. They direct the spray towards the bottle shoulder area, thus ensuring particularly intensive exterior cleaning.

Clean Design (optional)

- The housing and piping guide systems fulfil the highest hygienic demands and are equipped with central draining points.
- The open bottle slide made of one-piece, germ-resistant plastic sections guarantees the best possible hygienic conditions.
- The easily accessible discharge area enables fast, intensive cleaning.



Sieve case



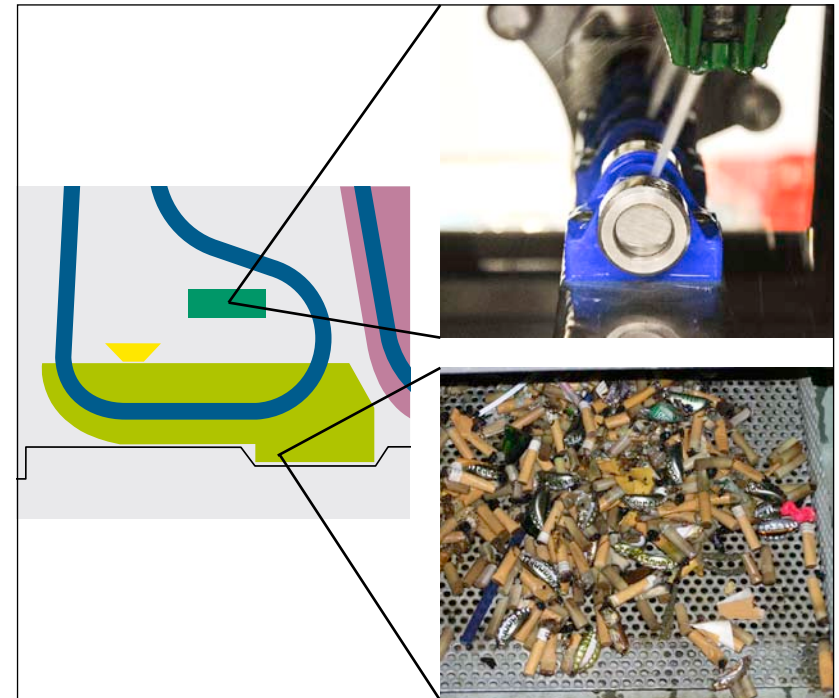
Open bottle chute made of plastic sections



Easy access to the bottle discharge

Additional equipment

- Connection to alternative heating systems
- High-pressure pre-jetting
- Stainless steel parts at the infeed and discharge of the bottles
- PSL package for washing bottles with self-adhesive plastic labels
- Label press
- Module for rinsing and disinfecting



Automatic debris removal

High-pressure pre-jetting

Connection to alternative heating systems possible, e.g., solar energy

Your benefits

KRONES Lavatec E2

- **Several model widths**

In order to make optimum use of the space available, the bottle washer is available in a range of different model widths.

- **Perfect cleaning at an inexpensive price**

The Lavatec E2 has been especially designed for the low and medium output range and stands out thanks to its low investment and operating costs.

- **Innovative spraying nozzles**

Newly developed double nozzles, which also clean the bottle shoulder area meticulously, are used for the first time ever in the Lavatec E2.

