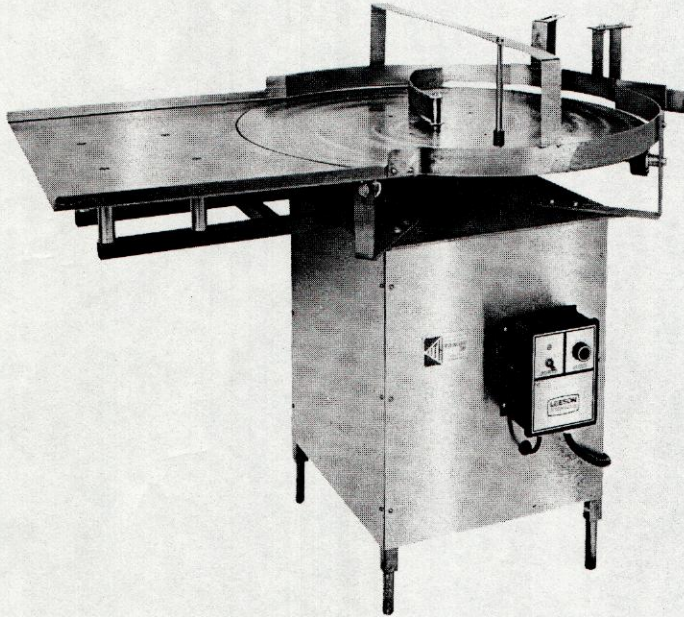




## ROTARY TABLES

### KMC ROTARY UNSCRAMBLER



The Rotary Unscrambler is designed to feed round containers of any type, size and material. The containers are generally fed from cartons onto the unloading table. They are then fed forward onto the rotary table which sorts them into a single file arrangement and feeds them onto the conveyor of existing equipment. The stainless steel center diverter which oscillates insures a proper jam-free feed. Output is dependent on container size.

### KMC ROTARY ACCUMULATING TABLE



The Rotary Accumulator is placed at the end of a production line and is designed to collect containers after they have been filled, capped and labeled. The accumulator gives the operator time to pack containers into shipping cases at an efficient pace.



# FEATURES OF THE ROTARY UNSCRAMBLING TABLE AND THE ROTARY ACCUMULATING TABLE

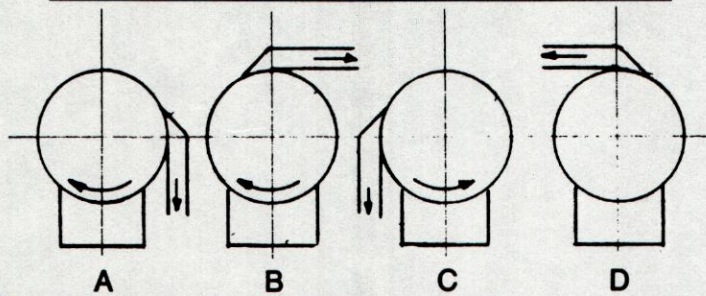
**SPECIFICATIONS:**

Disc Diameter.....	30", 35" and 47"
Disc Material.....	Stainless Steel
Guard Rails.....	2" Stainless Steel is standard. Other sizes available depending on containers to be handled.
Machine Covers.....	Stainless Steel
Drive.....	1/2 HP 1/60/110V SCR wide range variable speed drive on unscrambler, 1/2 HP fixed speed drive on accumulator.

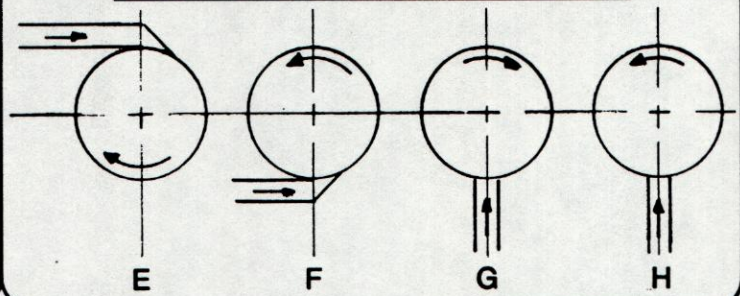
**OPTIONAL:**

Explosion Proof Motor and Control

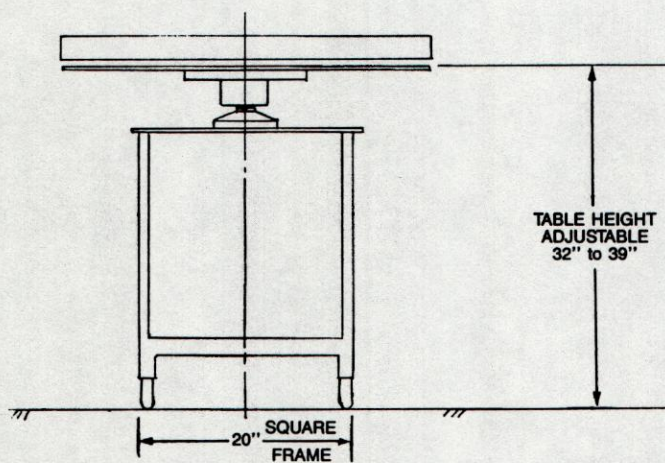
**UNSCRAMBLER  
ROTATIONS & DISCHARGES AVAILABLE**



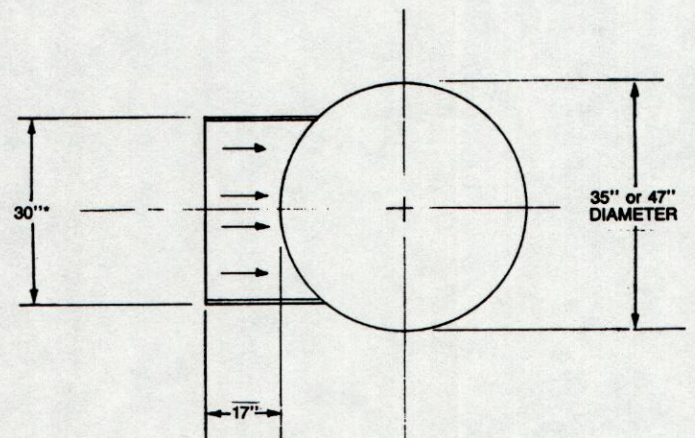
**ACCUMULATOR  
ROTATIONS & FEEDS AVAILABLE**



**DIMENSIONS FOR  
UNSCRAMBLER & ACCUMULATOR**



**DIMENSIONS FOR  
UNLOADING TABLE-UNSCRAMBLER ONLY**



\*24" Wide on 30" table.



Keith Machinery Corp.  
34 Gear Avenue, Lindenhurst, N.Y. 11758

**Packaging - Processing**  
**Bid on Equipment**

1-847-683-7720  
www.bid-on-equipment.com