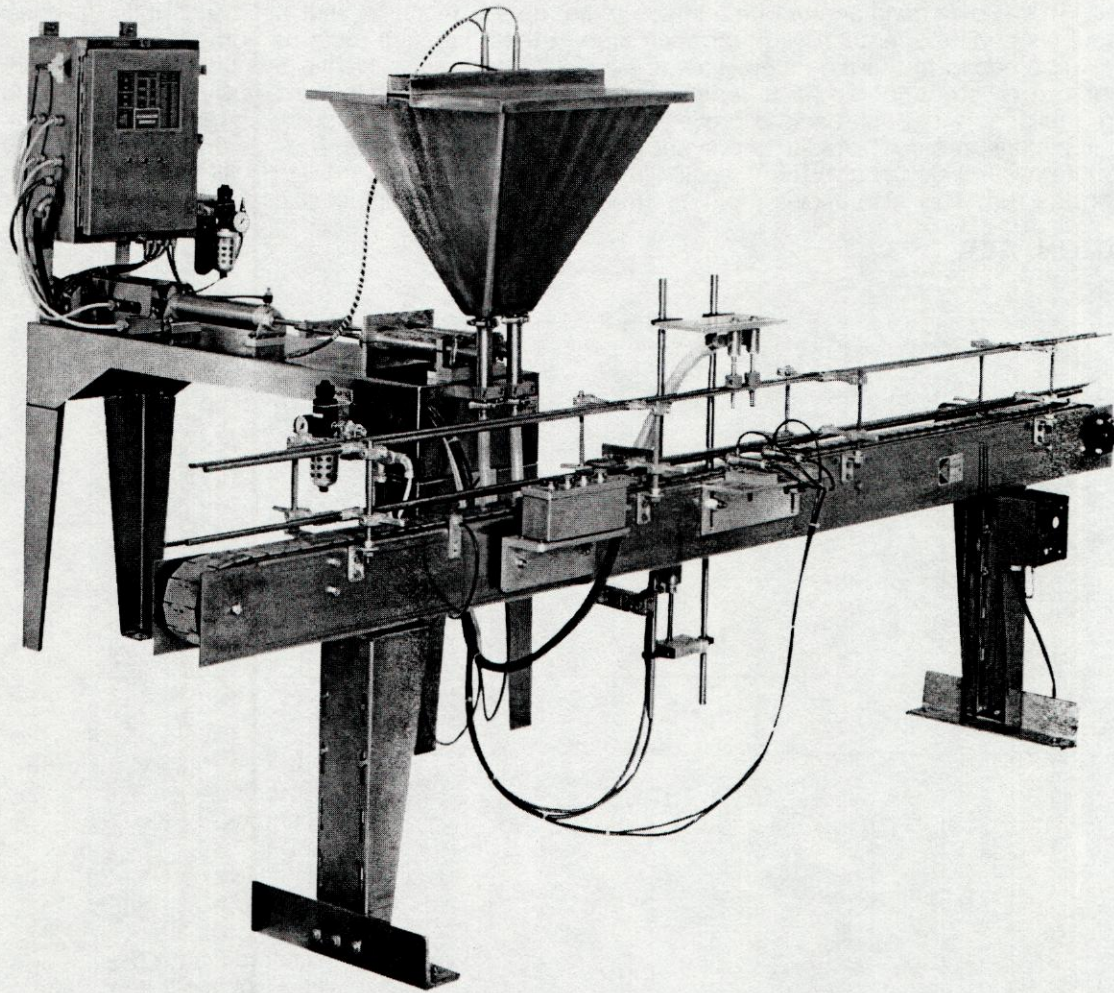




FULLY AUTOMATIC TWIN PISTON FILLER MODEL TPFA WITH MICROPROCESSOR CONTROL



- Changeover time 5 to 10 minutes. Quickly adapts to various container sizes, often without change parts.
- Approximate speed of 40-50 cpm (depending on bottle size, product viscosity, etc.).
- Cylinder capacity up to 40 oz.
- This filler can handle a wide variety of liquids, creams, pastes, & semi-viscous products.
- Provides extremely accurate fill volumes which eliminates costly giveaway.
- All stainless steel construction including contact parts and entire machine frame.
- Rugged construction, capable of many years of trouble free service.
- Easy to operate and maintain.
- 15 gallon SS hopper.

LOW COST

VERSATILE

RELIABLE



Keith Machinery Corp.
34 Gear Avenue, Lindenhurst, N.Y. 11757

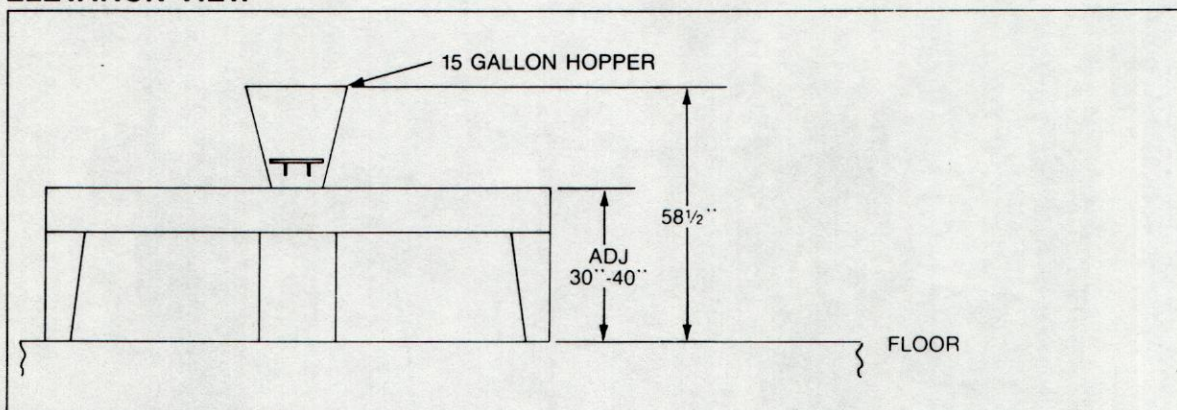
(516)
957-1200

FEATURES OF THE FULLY AUTOMATIC TWIN PISTON FILLER MODEL TPFA WITH MICROPROCESSOR CONTROL

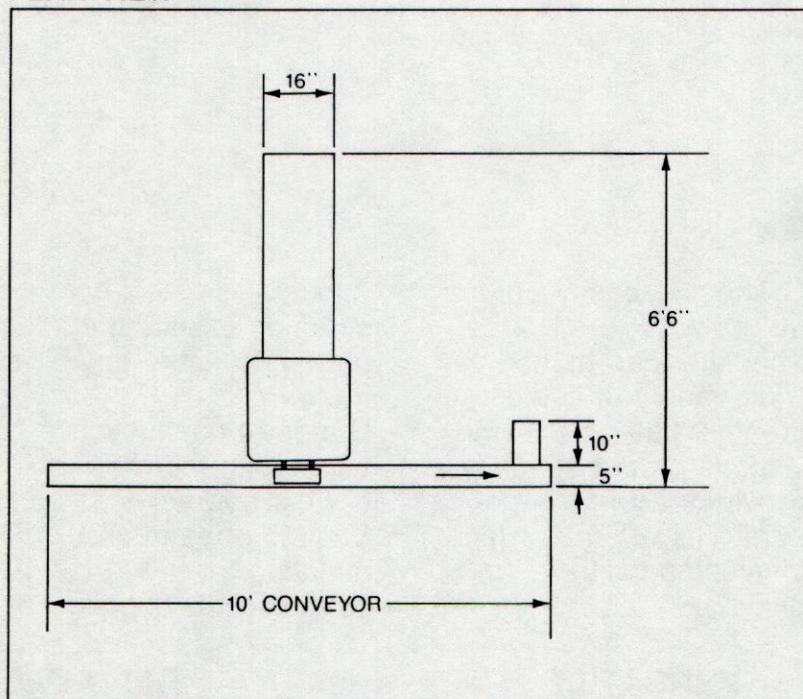
OPERATION

Straight Line Conveyor Operation provides simple container feed from rotary unscramblers, container feeders, or other standard equipment. Micro Processor Control provides state of the art design and operation. This allows maintenance mechanics to set up the machine with ease. The micro processor controls all sequential operations so that each step in the sequence must be completed before the machine will proceed to the next step. This is a solid state device which is totally trouble-free. The micro processor can be programmed for a variety of sequences. The operator can easily select top or bottom up filling, the degree of suck back to prevent drip, multi-stroke systems where large containers are filled with small pistons, rapid nozzle lift to prevent peaking, and a wide range of custom operations. There is also a prime cycle which allows the operator to run the pumps only in order to fill the product lines prior to starting the run. This also allows rapid cleaning of all product contact parts.

ELEVATION VIEW



PLAN VIEW



- Drip-free filling to insure a clean operation
- Economical - low initial cost
- Versatile - capable of filling jars, cans, bottles, tubes, pails, etc.
- Sanitary clamp type fittings allow the machine to be dismantled for cleaning and sterilization with little effort
- Stainless Steel Conveyor Construction with variable speed drive
- Bottom Up Fill System
- No Container No Fill



Keith Machinery Corp.
34 Gear Avenue, Lindenhurst, N.Y. 11757

Packaging - Processing
Bid on Equipment

1-847-683-7720

www.bid-on-equipment.com