

Application

The 2410 loader is offered in two versions - pellet or powder. The 2410 pellet loader is a compact, economical vacuum loader that efficiently handles clean pelletized materials. It is used for machine loading and other applications where material is moved a short distance to one destination. It comes with a self-contained power head and controller. The low profile design allows the loader to be installed in areas where headroom is limited.

The 2410 powder loader is equipped with an automatically pulse-cleaning filter assembly. The powder loader is designed for short distance conveying and loading of free-flowing powder or granular material to one destination. It is also ideal for conveying pellets in applications where the unit's location restricts manual filter cleaning. It comes with a self-contained power head and controller.

Design

2410 loaders are available in either aluminum (painted) or stainless steel construction. Components of different construction are interchangeable allowing loaders to be specified with stainless steel material contact areas only.

Mechanical Features

- Rugged modular design
- Quick-connect clamps for easy cleaning and filter maintenance
- Full support discharge flange for mounting

Controls

The 2410 loader is equipped with the LSR Controller. Front panel controls include a potentiometer to set the draw time and an on/off switch. The controls, on even the simplest loader are capable of handling future add-on options, such as pulse-clean powder filters. The control is provided by a 15 amp, 115/230 VAC, single-phase, grounded panel.

Conveying Rates

Based on a distance of 6 m [20 ft] and bulk density of 0.5 kg/dm³ [31 lb/ft³]. Rates vary with material characteristics, conveying distance and plant layout.

Pellet Receiver

Up to 450 kg/hr [1000 lb/hr]

Powder Receiver

Up to 400 kg/hr [900 lb/hr]

Technical Data

Standard Mechanical Specifications

- Available in painted RAL 7035 gray aluminum or 1.4301 (AISI 304) stainless steel construction
- Supply power: 115/230 VAC, 15 amp auto switching
- 115/230 VAC, single-phase, 50/60 cycle brush-type power unit with integral centrifugal 2-stage blower
- Volume capacity 7 dm³ [0.25 ft³]
- 254 mm [10 in] diameter housing
- 50 mm [2 in] tangential inlet
- Stainless steel band clamps
- One-piece stainless steel 125 mm [5 in] discharge gate with white Neoprene seal
- Inductive proximity switch level-sensing system on discharge gate 24 VDC



Standard Filtration Configurations

- Open celled foam filter element for pellet receivers
- 16 oz polyester cloth filter bag with snap-ring seal for powder receiver, total 0.37 m² [4 ft²] filter area

Weights

- 16 kg [35 lb] depending on discharge configuration

Operating Temperature

- -10° C to +50° C [14° F to 122° F]

Options

Mechanical

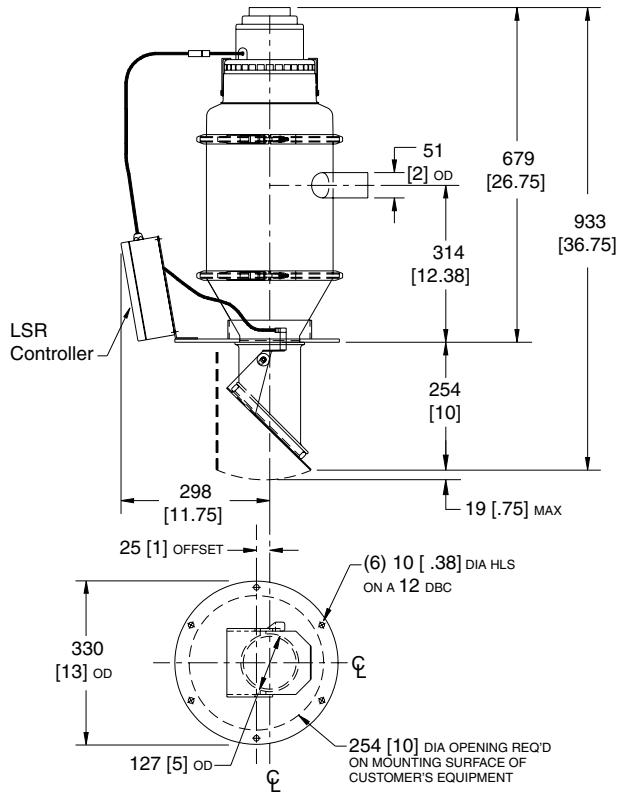
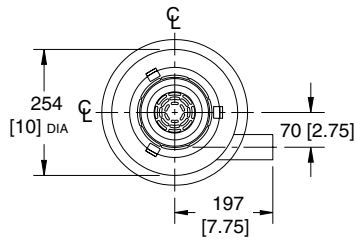
- Flange for discharge gate valve (volume capacity 7 dm³ [0.25 ft³]) other volumes available upon request
- PTFE membrane on filter elements
- Custom material combinations
- Reduced inlet tube size to meet smaller capacity applications
- Air-actuated gate assemblies (butterfly valve & knife gates) for use with feeder refill
- Conversion kits modify the loader to a receiver for use in a Series 2400 central conveying system

Electrical

- Level probes (capacitive or tuning fork type)
- Limit switches on butterfly or slide gate valve
- LSR Controller

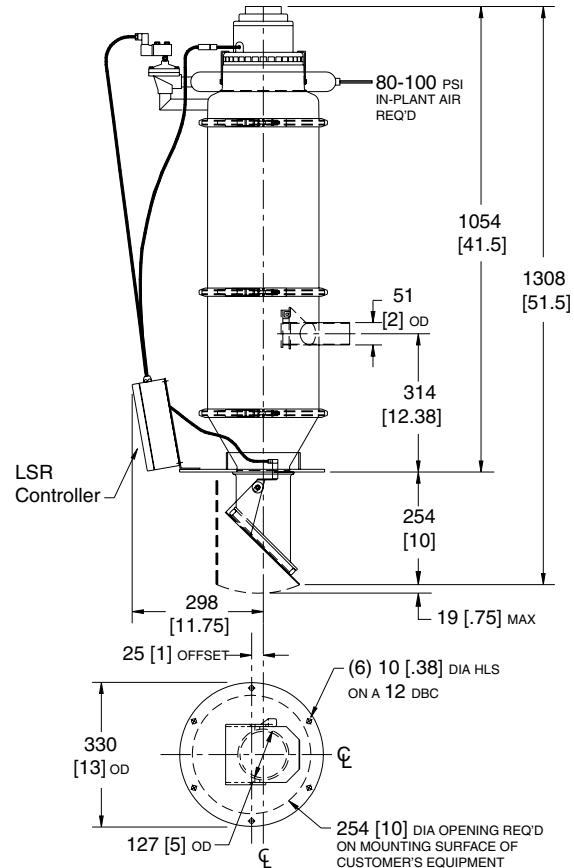
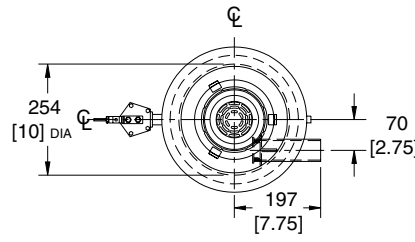
Dimensions of 2410 Pellet Loader

mm [in]



Dimensions of 2410 Powder Loader

mm [in]



Note: For more information on these products consult your K-Tron / Premier Sales Representative.

Caution: Measurements are for general reference only. Please consult dimensional drawing for exact measurements.