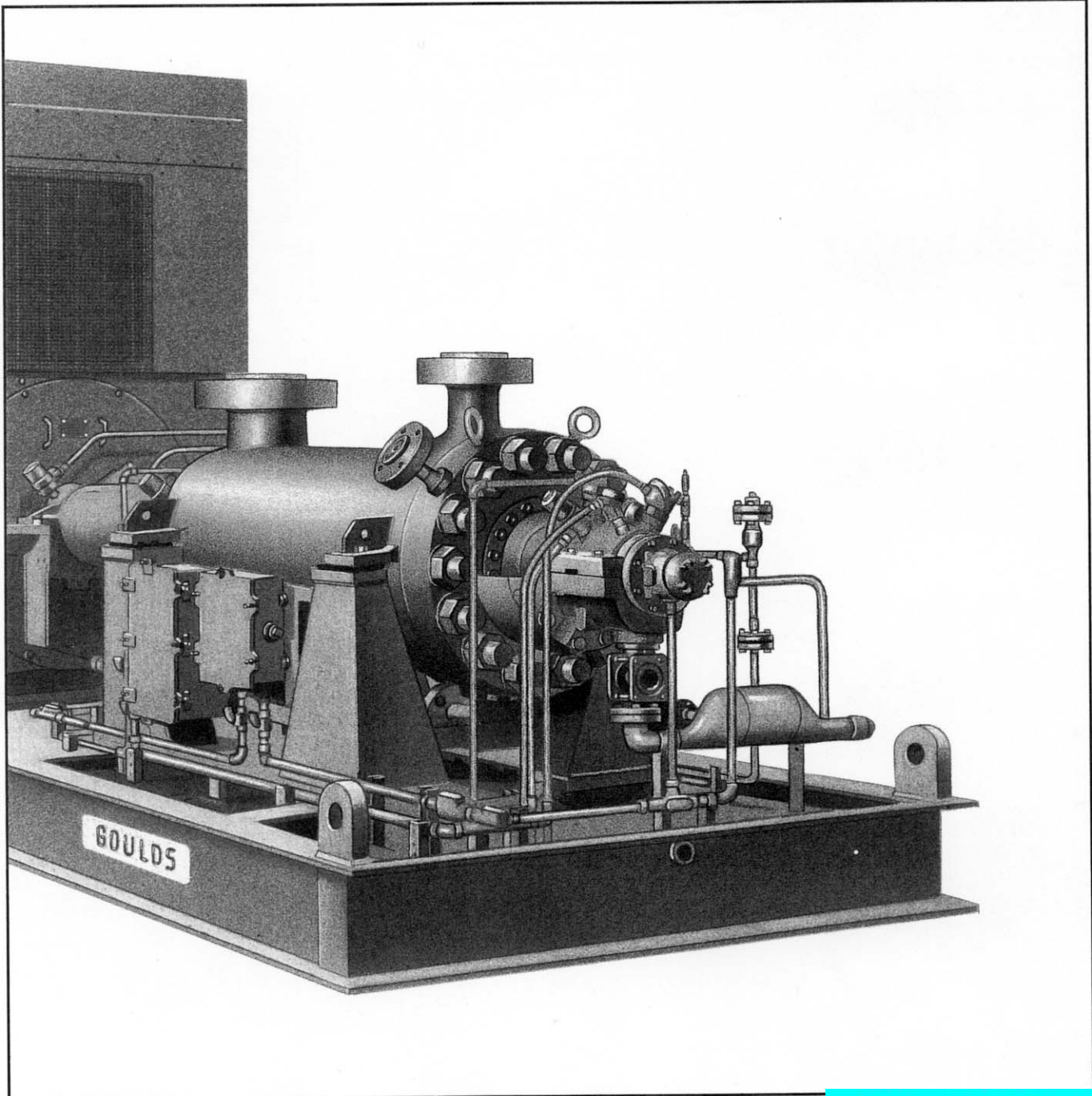




# Goulds Model 7200 (CB) High Pressure Multi-stage Barrel Pumps



© 1993 Goulds Pumps, Inc.

**Packaging - Processing**  
**Bid on Equipment**  
1-847-683-7720  
[www.bid-on-equipment.com](http://www.bid-on-equipment.com)

# Goulds Model 7200 (CB)

## High Pressure Multi-stage Barrel Pumps

The Model 7200 (CB) line of pumps is a double cased, radially split, diffusor-guide vane, horizontal multistage barrel pump with a cartridge style rotor. It is designed in conformance to API-610.

Goulds Model 7200 high pressure multistage barrel pumps set the standard for the tough jobs in high energy applications necessitating barrel pumps of unsurpassed quality, rugged mechanical design, optimum efficiency and stable hydraulic performance.

### Design Features

- **Forged barrels** built to the highest quality standards.
- **Multi-vane diffusor/channel ring** assemblies to eliminate radial unbalance throughout the entire operating range and minimize sensitivity to thermal shock.
- **Straight or flanged balance device** customized for each service to maximize axial balance and hydraulic efficiency.
- **API-610, conformance**
- **Rotor** is of the cartridge design to facilitate maintenance in remote or hostile environments. The entire inner assembly, including discharge head, suction head and both bearing housing can be removed as a unit without component disassembly.
- **Shaft** is heavy duty, precision machined and stepped for ease of disassembly. Generous fillet radii at shoulder reduces stress concentrations. Optimum bearing span and large shaft diameter minimize deflection and prolong bearing and mechanical seal life.
- **Balance Drum** maintains axial balance throughout the entire operating range. A straight or flanged drum is available depending on the application.
- **Outboard Seal Chamber** is removeable to facilitate inspection or replacement of the balance drum without disturbing discharge head/barrel bolting joint.

- **Bearings** are sleeve radial/KTB thrust. Thrust bearings are conservatively sized for each application. Tri-land sleeve bearings are available for high speed applications. The thrust bearing can be obtained from a number of manufacturers to suit customer preference. Both sleeve and KTB are force feed lubricated for long life.

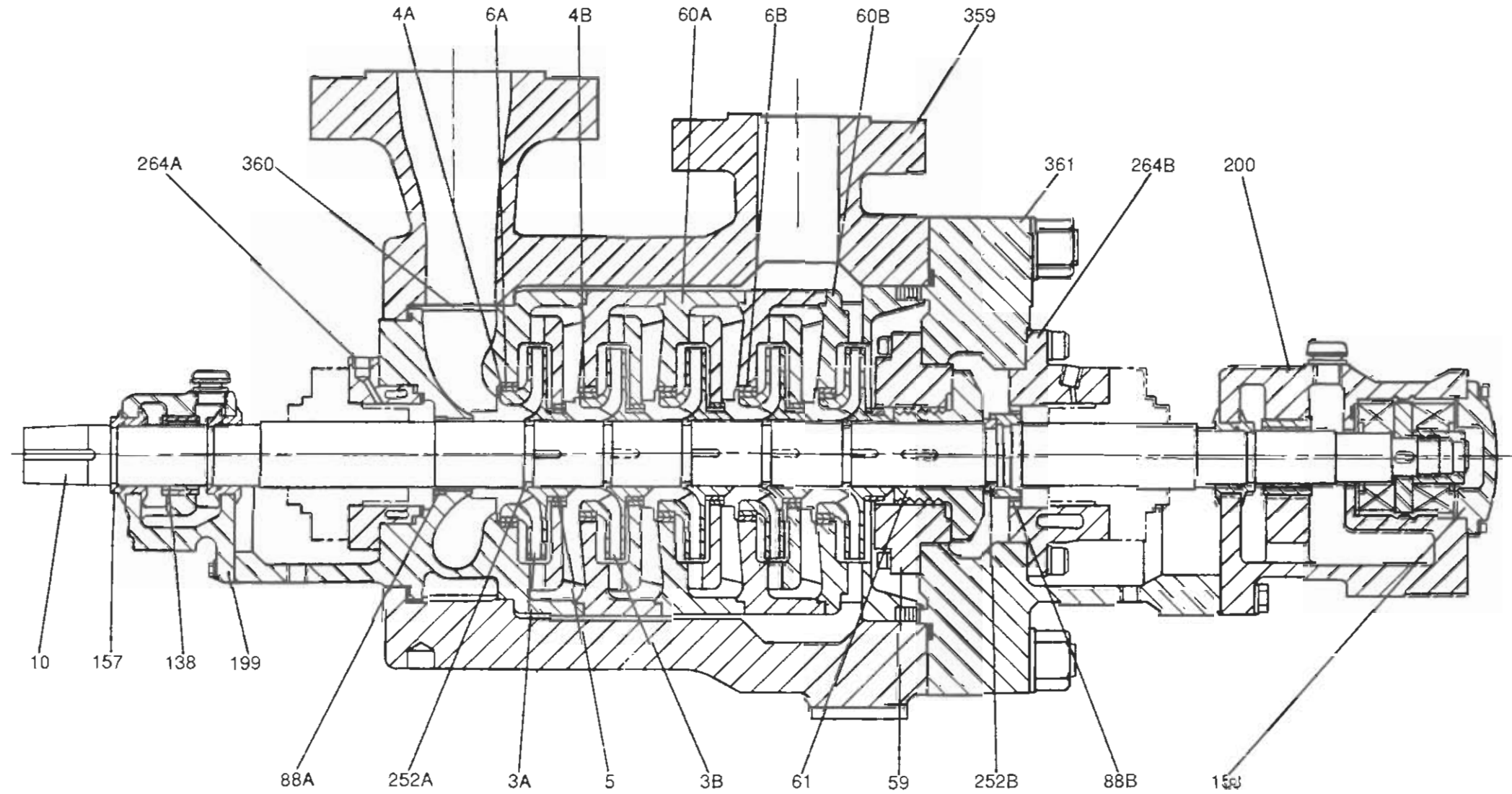
Sleeve/ball and ball/ball bearings are available on non-API-610 applications where allowed by the operating conditions.

### Services

The 7200 (CB) Heavy duty barrel pump designed for extremely demanding process application including oil production, refinery, petrochemical. Disc or drum balanced, with complete API-610 compliance, the model 7200 (CB) is a proven performer in worldwide service.



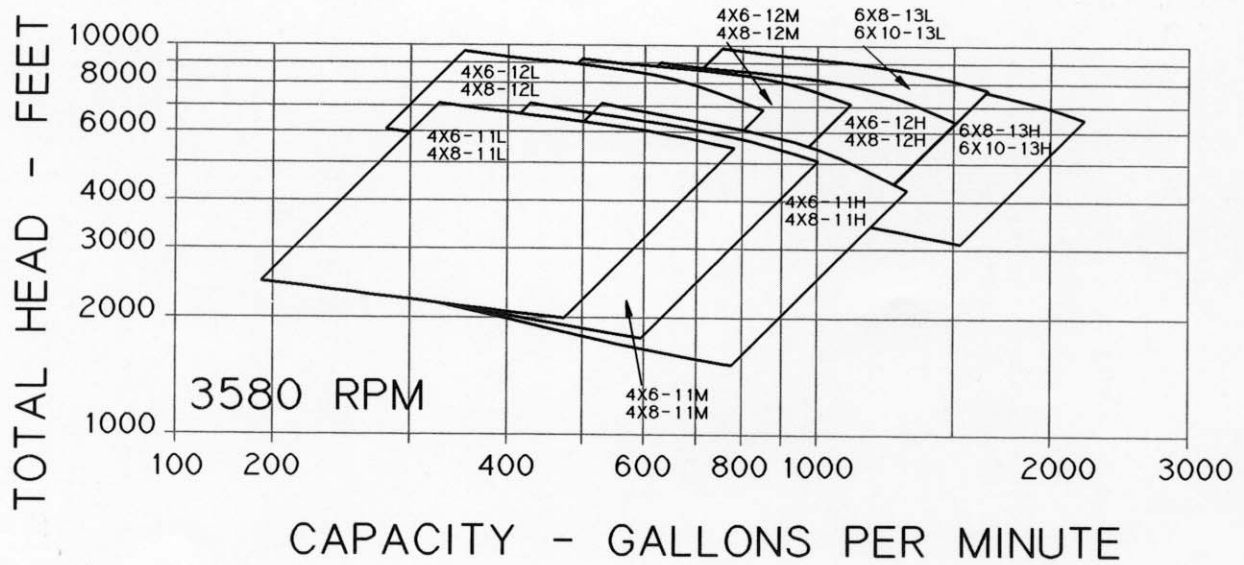
**Goulds Model 7200 (CB)**  
 High Pressure Multi-stage Barrel Pumps



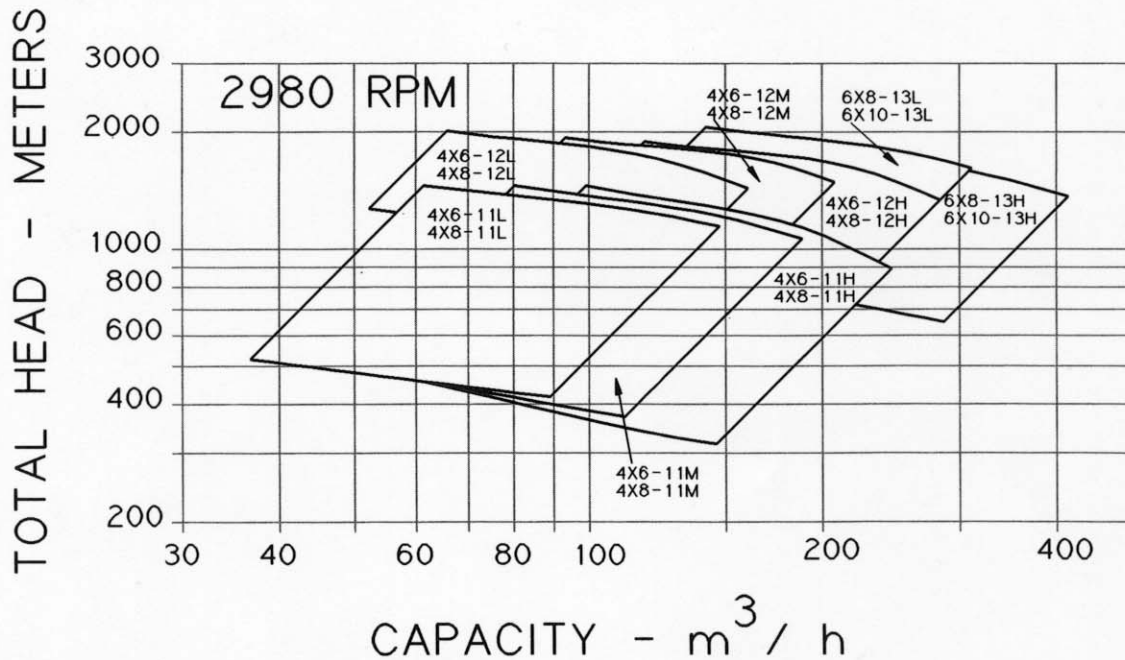
**Parts List**

3A	IMPELLER - 1ST STAGE	10	SHAFT	138	BEARING LINING - RADIAL AND THRUST BRG.	252B	SPLIT RING - AT BALANCING DRUM
3B	IMPELLER - INTERMEDIATE STAGES	59	BALANCING SLEEVE	157	FLINGER - RADIAL AND THRUST BEARING	264A	STUFFING BOX EXTENSION - RADIAL END
4A	IMPELLER RING - 1ST STAGE	60A	CHANNEL RING - INTERMEDIATE STAGES	158	END COVER	264B	STUFFING BOX EXTENSION - THRUST END
4B	IMPELLER RING - INTERMEDIATE STAGES	60B	CHANNEL RING - LAST STAGE	199	RADIAL BEARING BODY AND CAP COMPLETE	359	BARREL
5	IMPELLER BUSHING RING	61	BALANCING DRUM	200	THRUST BEARING BODY AND CAP COMPLETE	360	SUCTION HEAD
6A	CASING RING - 1ST STAGE	88A	STUFFING BOX BUSHING - RADIAL END	252A	SPLIT RING - AT IMPELLERS	361	DISCHARGE HEAD
6B	CASING RING - INTERMEDIATE STAGES	88B	STUFFING BOX BUSHING - THRUST END				

## Hydraulic Coverage (60 Hz)

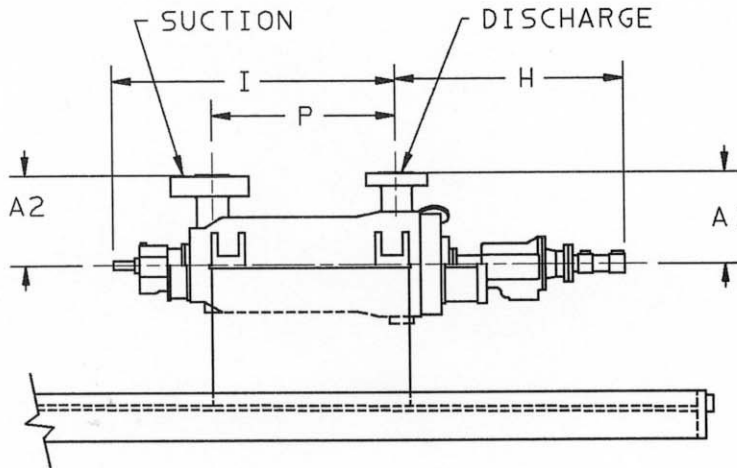


## Hydraulic Coverage (50 Hz)



# Dimensions Goulds Model 7200 (CB)

All dimensions in inches (mm). Not to be used for construction.



MODEL	PUMP SIZE	SUCTION SIZE	DISCHARGE SIZE	A1 INCHES (mm)	A2 INCHES (mm)	H INCHES (mm)	I		P		WEIGHT	
							FOUR STAGE INCHES (mm)	ADD PER STAGE INCHES (mm)	FOUR STAGE INCHES (mm)	ADD PER STAGE INCHES (mm)	FOUR STAGE LBS. (kg)	ADD PER STAGE LBS. (kg)
7200	4X6-11	6	4	23.12 (587)	21.62 (549)	46.12 (1171)	38.12 (968)	4.25 (108)	14.38 (365)	4.25 (108)	6640 (3012)	550 (249)
	4X6-12	6	4	24.50 (622)	23.00 (584)	59.25 (1505)	41.75 (1060)	4.62 (117)	15.38 (391)	4.62 (117)	9380 (4255)	670 (304)
	6X8-13	8	6	26.50 (673)	25.00 (635)	61.00 (1549)	49.50 (1257)	5.81 (148)	22.12 (562)	5.81 (148)	12785 (5799)	1100 (499)
7200D	4X8-11	8	4	23.12 (587)	23.12 (587)	42.62 (1083)	38.12 (968)	4.25 (108)	14.62 (371)	4.25 (108)	7040 (3193)	550 (249)
	4X8-12	8	4	24.50 (622)	24.50 (622)	46.50 (1181)	41.75 (1060)	4.62 (117)	15.12 (384)	4.62 (117)	10260 (4654)	670 (304)
	6X10-13	10	6	26.50 (673)	26.50 (673)	55.50 (1410)	49.50 (1257)	5.81 (148)	22.62 (575)	5.81 (148)	14185 (6434)	1100 (499)

**GOULDS PUMPS, INC.**  
 INDUSTRIAL PRODUCTS GROUP  
 Seneca Falls, New York 13148

Form B7200 1993

**Packaging - Processing**  
**Bid on Equipment**  
 1-847-683-7720  
[www.bid-on-equipment.com](http://www.bid-on-equipment.com)