



ITT

Goulds Pumps

Goulds 3640

API-610 10th Edition/ISO 13709
API BB2 Two-Stage, Between-Bearing,
Radially Split



Engineered for life

Packaging - Processing
Bid on Equipment

1-847-683-7720

www.bid-on-equipment.com

A Leader in API Engineered Pump Package Solutions...

Proven API Leadership

ITT Goulds Pumps is a proven leader in API Pumps

- ◆ Over 18,000 units installed
 - Over 15,500 OH2/OH3's
 - Over 2,500 BB1/BB2/BB3 pumps
- ◆ 50+ years of API expertise
- ◆ Participating member on API 610 and API 682 committees

Family of API Pumps

ITT Goulds Pumps has a family of proven API pumps

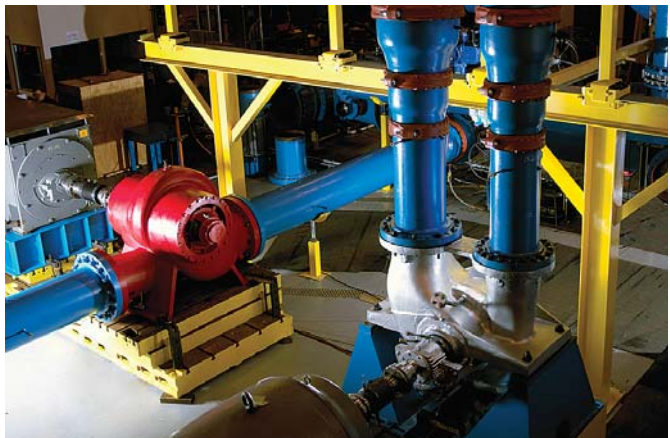
- ◆ Overhung pumps
- ◆ Single and two-stage between-bearing pumps
- ◆ Multi-stage between-bearing pumps
- ◆ Vertical, double casing pumps
- ◆ Specialty pumps

Global Coverage

ITT Goulds Pumps has the global coverage needed to serve multi-national companies in any region.

Industry Leading Hydraulic Coverage

- ◆ We offer dense hydraulic coverage to meet your process needs.
- ◆ Better hydraulic fits can mean improved efficiency and long-term reliability and parts life.



4600 Horsepower Testing Capability

- ◆ Our expanded test facility can test your pump in the most demanding of conditions.
- ◆ Testing at rated speeds is critical to assess the impact of dynamic conditions including vibration.

API Engineering Expertise

- ◆ We are experts in packaging engineered pumps that meet your demanding applications — with true conformance to the latest API specifications.
- ◆ We have extensive experience in nearly every type of driver, bearing, seal, piping configuration, nozzle configuration, flange and baseplate designs to meet your application needs.
- ◆ ITT is a world leader in technology and engineering including hydraulics, materials science, mechanical design, and fluid dynamics.

Broad Applications

- ◆ Petroleum refining, production, and distribution
- ◆ Petrochemical and demanding chemical processing
- ◆ High temperature applications including boiler circulation
- ◆ General industrial requiring high temperature or high pressures



Packaging - Processing
Bid on Equipment
 1-847-683-7720
www.bid-on-equipment.com



Goulds Model 3640 between-bearings radially split process pumps are designed for smooth, reliable operation, and meet the toughest specification requirements of API-610/ISO 13709 to assure extended service life.



Goulds 3640

High Temperature and Pressure Process Pumps that Meet or Exceed API-610 and ISO 13709 10th Edition

Safety, reliability and versatility are the key words for our 2 stage, centerline mounted, between-bearing (BB2) API 610 process pump.

Safety and Reliability

We provide engineered solutions with true conformance to the latest API specifications including the stringent emissions containment per API 682.

The result is a safe and rugged between-bearing API process pump designed for a 20-year life.

Versatility

- ◆ Capacity to 7500 GPM (1700 m³/h)
- ◆ Total Dynamic Head to 2500 feet (760 m)
- ◆ Temperature to 850°F (455°C)
- ◆ Pressure vacuum to 1130 PSIG (75 kg/cm²)

Materials: Available in a wide range of materials including all API 610 constructions and custom application needs.

Engineered Hydraulics: Dense hydraulic coverage to better match your process for efficiency and reliability. Custom hydraulics are available.

Engineered Packaging with a wide range of drivers, seals, piping, nozzle configurations, flanges, base plates, and QC testing.

Services

- ◆ **Refinery** — Process feed, reflux, splitter bottoms, high-pressure process transfer

Packaging - Processing
Bid on Equipment
 1-847-683-7720
www.bid-on-equipment.com



Model 3640 High-Pressure/High-Temperature Two-Stage Process Pumps (API BB2)

Heavy-Duty Design Features for Refinery and Petrochemical Services

HEAVY DUTY SHAFT

Minimum shaft deflection for extended seal bearing life. Sized to meet deflection and rotor dynamics requirements of API-610/ISO 13709.

RADIAL BALANCE

First stage radially balanced by diffuser for minimum shaft deflection.

RENEWABLE WEAR RINGS

API-610/ISO 13709 running clearances. Positively locked.

CENTERLINE MOUNTED CASING

Heavy duty mounting extensions accept API-610/ISO 13709 nozzle loads and maintain pump alignment under extreme service conditions.

CLASS 300 RF FLANGES STANDARD

Other classes and facings optional.

RADIALLY SPLIT CASING

Designed specifically for high pressure/high temperature services. Fully confined controlled compression gaskets assure leak-proof sealing.

CASING HEAD ON OUTBOARD END

Allows removal of rotor without disturbing suction and discharge piping.

JACKETED SEAL CHAMBERS

Available as required for service conditions.

ENLARGED SEAL CHAMBERS

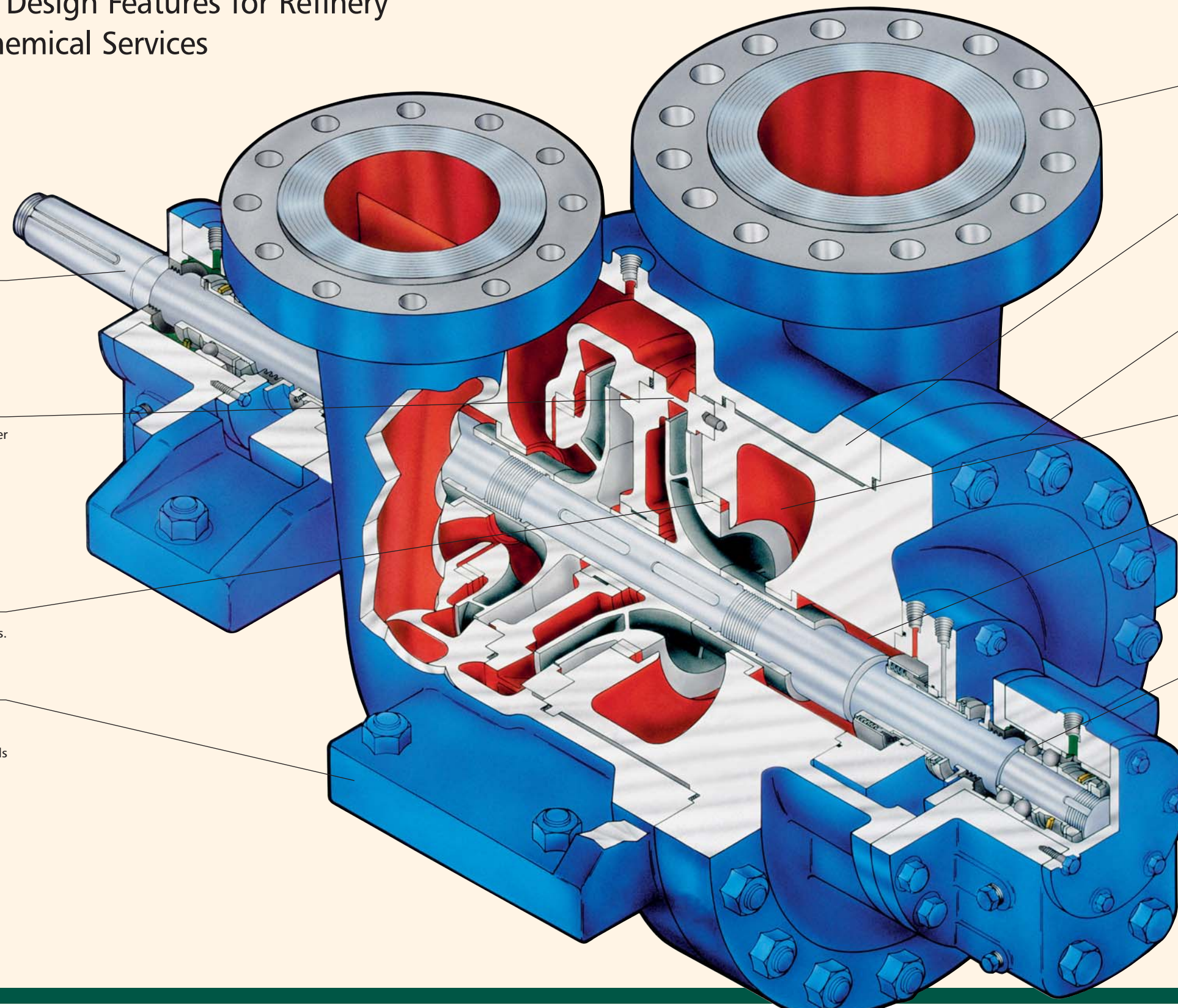
Conform to API-610/ISO 13709 dimensional requirements. Allows use of wide range of API-682/ISO 21049 cartridge mechanical seals to meet specific service conditions.

HEAVY DUTY THRUST BEARING

Duplex 40-degree angular contact standard. Ring oil lubricated. Other bearing configurations available to meet specific service requirements.

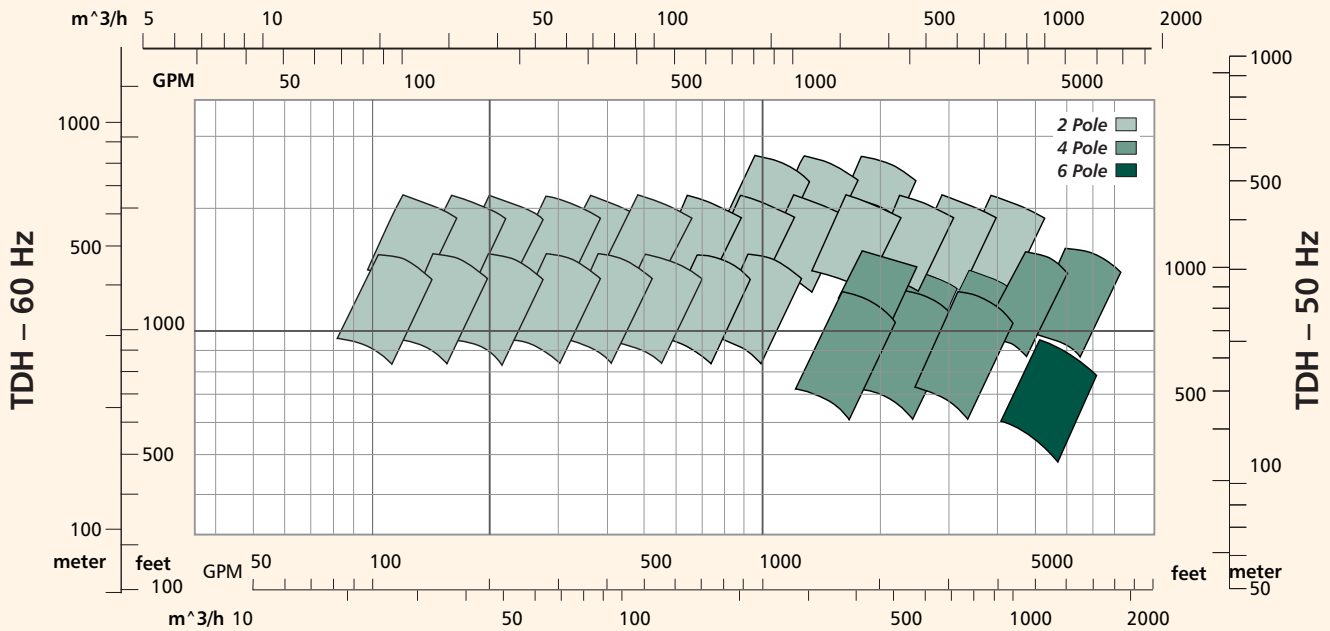
OPPOSED IMPELLERS ARRANGEMENT

Reduced axial forces for maximum bearing life. Impellers are driven by individual keys and positioned on shaft by dual locknuts. Staggered impeller vane tips for reduced pressure pulsations at vane passing frequency.



Hydraulic Coverage

Flow Capacity – 50 Hz



Flow Capacity – 60 Hz

Note: Hydraulics above represent 80% to 110% of best efficiency point (BEP).

PRO Services® Engineered Upgrade

Example of our PRO Services® Engineered upgrade capability. The following two-stage API BB2 Model 3640 was upgraded from an old edition of API 610 to the latest (10th) edition of API.

Original Pump



10th Edition Upgrade





PRO Services®
Extending
Equipment Life...

Product Repair

- Service Center Repair
- Turnkey Repair/ Installation
- Field Service
- Emergency Service

Reliability Improvement

- Predictive Condition Monitoring
- Root Cause Failure Analysis
- Machine & System Assessment
- Engineered Upgrades
- Training

Optimization of Assets

- Inventory Management
- Replacement/Exchange
- Maintenance Management
- Contract Maintenance

- All Brands
- Factory Trained Service Personnel
- Quality
- Fast Turnaround
- Emergency Service – 24 hours/day, 7 days/week
- ISO and Safety Certified



PROSMART

Predictive Monitoring Saves Money and Down Time

The ProSmart predictive condition monitoring system enables you to IDENTIFY and SOLVE problems before they impact production.

ProSmart collects and analyzes machine health every 5 seconds, automatically notifying you of changing conditions. Resources are optimized and maintenance activities are PLANNED — not REACTIVE.

A wireless architecture reduces installation costs and complexity.

A web-based client eliminates software installation and maintenance costs and also enables multi-site management.

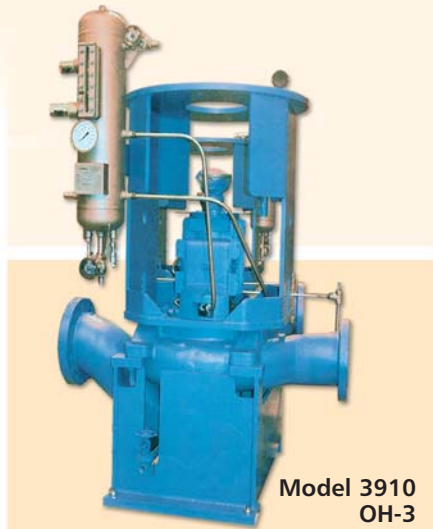
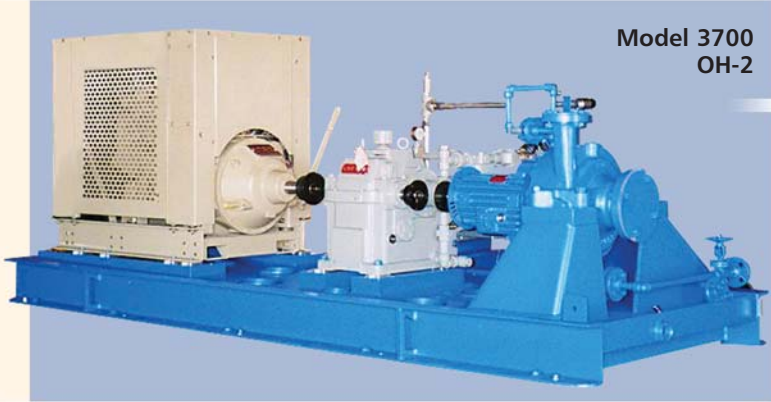
Approved for Class 1, Division 2 hazardous areas.



Packaging - Processing
Bid on Equipment
1-847-683-7720
www.bid-on-equipment.com

A Leader in API Engineered Pump Package Solutions

API Family of Pumps



Goulds Model	API Type	Capacity GPM (M ³ /Hour)	TDH Feet (Meters)	Temperature °F (°C)	Pressure PSIG (kg/cm ²)
3700	OH-2	6,500 (1475)	1,200 (360)	800 (425)	870 (60)
3910	OH-3	7,500 (1700)	750 (225)	650 (340)	600 (40)
3600	BB-3	4,500 (1020)	6,000 (1825)	400 (205)	2,500 (175)
3620	BB-2	20,000 (4540)	1,500 (455)	850 (455)	1,000 (70)
3640	BB-2	7,500 (1700)	2,500 (760)	850 (455)	1,130 (75)
3610	BB-1	50,000 (11355)	700 (215)	300 (150)	300 (20)



Visit our Web site at www.gouldspumps.com



Packaging - Processing
Bid on Equipment
1-847-683-7720
www.bid-on-equipment.com