

CCW-Z-214W

This weigher incorporates all of the advanced features of the "Z" series, including computer-controlled stepping motors and the availability of memory cards for unlimited expansion of preset parameters. Speeds of 100 W.P.M. are easily achievable. Suitable for a wide range of applications in the food industry.



Standard Type Weigher



Dustproof Type



Plasma Touch Screen



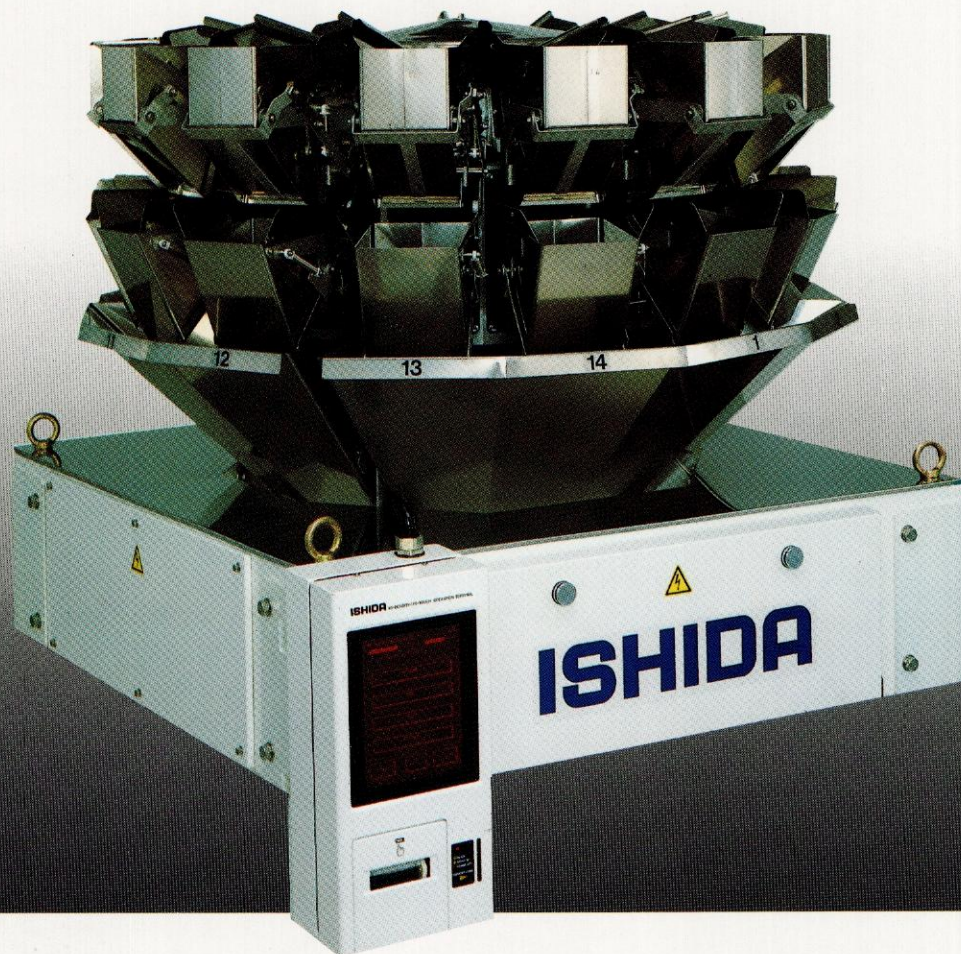
Stepping Motor



System Engineered

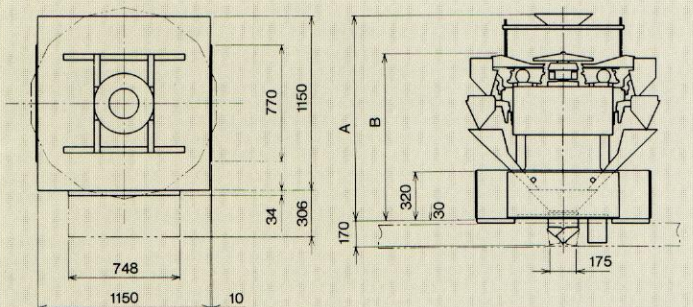


Easy Cleaning and Maintenance



DIMENSIONS

Units:mm



A:S/20 = 1315 B:S/20 = 1065
:S/30 = 1355 :S/30 = 1105

SPECIFICATIONS

Model	CCW-Z-214W-S/20		CCW-Z-214W-S/30	
Weighing Capacity	500g	1,000g	500g	1,000g
Weighing Range	14g to 500g	25g to 1,000g	14g to 500g	25g to 1,000g
Accuracy for Single Product (*)	$\bar{X} < 1.0g$ (Max.)	$\bar{X} < 2.0g$ (Max.)	$\bar{X} < 1.0g$ (Max.)	$\bar{X} < 2.0g$ (Max.)
Maximum Volume for Weighing	3,000 cc (per single dump)		4,500 cc (per single dump)	
Weighing Speed(**)	up to 100 W.P.M.		up to 90 W.P.M.	
Controller	16 bit microprocessor			
Weigh Cell	Double-beam strain gauge load cell			
Target Weight Setting	Digital entry via touch screen panel			
Weight Display	(Minimum Graduation)		(Minimum Graduation)	
	0.1g	0.2g	0.1g	0.2g
Material	Product contact surfaces are made of stainless steel or other sanitary materials.			
Options	Various options are available. Please contact Ishida distributors.			

NOTE: Specifications subject to change without notice.

(*) Depends on target weight, weighing speed and conditions.

(**) Depends on product shape, product density, target weight, etc.

Packaging - Processing
Bid on Equipment

1-847-683-7720

www.bid-on-equipment.com