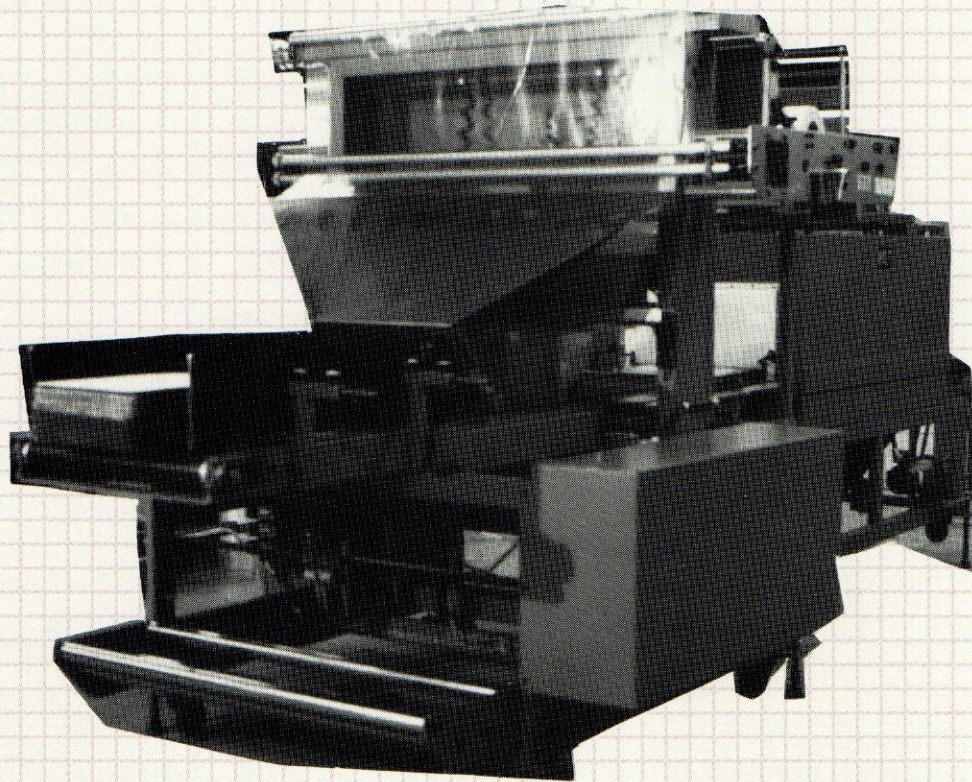


# IDEAL

Designers and Manufacturers of Quality Packaging Equipment



**AUTOMATIC INLINE PLOUGH WRAPPER**

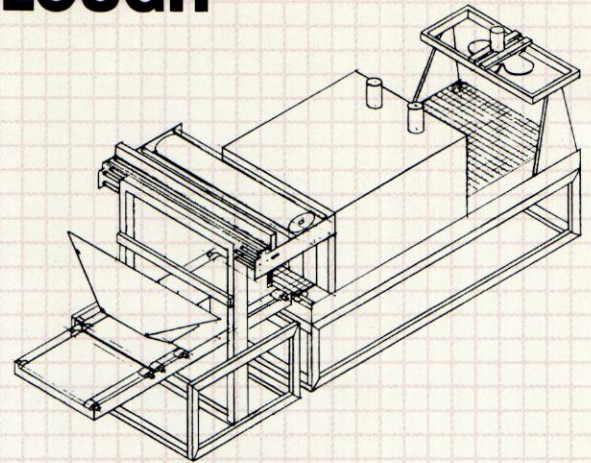
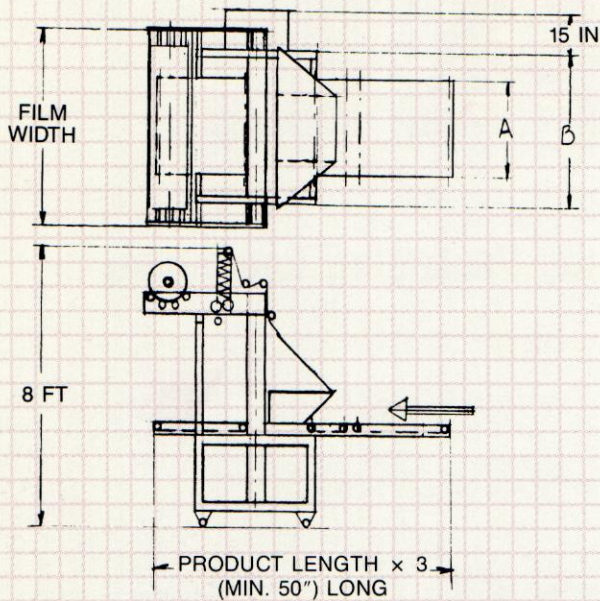
**MODEL 505 ( ) P**

Packaging - Processing  
**Bid on Equipment**

1-847-683-7720

[www.bid-on-equipment.com](http://www.bid-on-equipment.com)

# IDEAL 505 ( ) P INLINE PLOUGH WRAPPER



**OPERATION MODE**

The Ideal Inline wrapper, is a versatile heavy duty wrapper designed for continuous operation.

The infeed conveyor moves the product together with the pre-formed film through the open sealing jaw onto the outfeed conveyor.

The outfeed conveyor moves the product until it passes the sealing jaws, then it stops.

The sealing jaws close behind the product to seal the open end. After a short delay the outfeed conveyor moves the product onto the shrink tunnel conveyor. This conveyor conveys the product into the shrink tunnel conveyor, while passing in the tunnel two actions will occur:

1. The bottom overlap will fuse.
2. The poly will shrink around the package.

## 505 ( ) P

MODEL #	(20)	(30)	(40)	(50)	(60)	(70)
Sealing length	20"	30"	40"	50"	60"	70"
Max Film Width	18"	28"	38"	48"	58"	68"
A Conveyor Width	15"	25"	35"	45"	55"	65"
B Frame Width	30"	40"	50"	60"	70"	80"

## FEATURES

- Solid sealing jaw.
- Powered outfeed conveyor with a solid belt.
- Powered film drive top.
- Film carriage drop in type.
- PLC control.

## OPTIONS

- Split infeed conveyor for bundle separation.
- Soft film feed top.
- Pressure pad.
- Live roller infeed and outfeed conveyors.

## SPECIFICATION

PRODUCT HEIGHT	UP TO 18"	SPEED	UP TO 30 PER MINUTE DEPENDING ON PRODUCT.
FILM TYPE	POLYETHYLENE P.V.C. POLYPROPYLENE	ELECTRIC	ACCORDING TO CUSTOMER SPECIFICATIONS 220 VOLTS, 1 PHASE, 10 AMPS IS STANDARD
FILM THICKNESS	UP TO 5 MIL	AIR	4 C.F.M. - 80 P.S.I.

*Packaging - Processing*  
**Bid on Equipment**

1-847-683-7720  
[www.bid-on-equipment.com](http://www.bid-on-equipment.com)

Head Office: 4701 Rivard St.  
 Montreal, Quebec, Canada H2J 2N5



Telephone: 514 / 845-9291  
 TELEX: North America CA7607901  
 Overseas CA230-7607901  
 FAX: 514 / 845-2652