

FT-60-RD Centrifugal Feeder

Designed for Quiet, High Speed Feeding

Product Overview:

Shibuya Hoppmann's standard FT-60 rigid disc centrifugal feeder is designed to feed a variety of products with its unique bowl design. Product is metered into the bowl and brought out to the bowl rim where a series of qualifiers gently orient the part for transfer to various downstream inline devices.



Product Specifications:

| | ANSI | Metric |
|--------------------------|------------|---------------|
| A. Outside Diameter | 85" | 2159mm |
| B. Frame Height | 47" ± 1.5" | 1194mm ± 40mm |
| C. Discharge Height | 36" ± 2" | 914mm ± 51mm |
| D. Bowl Outside Diameter | 70" | 1778mm |
| E. Bowl Inside Diameter | 60" | 1524mm |
| F. Rim Width | 5" | 127mm |
| G. Bowl Depth | 9.13" | 232mm |

Standard Models:

| Part Number | FT601RLDSA | FT601RLASA |
|---------------|------------|--------------|
| Motor Style | DC | AC |
| Horsepower | 3/4 hp | 3/4 hp |
| Motor Voltage | 90V | 208-230/460V |

Required Accessories:

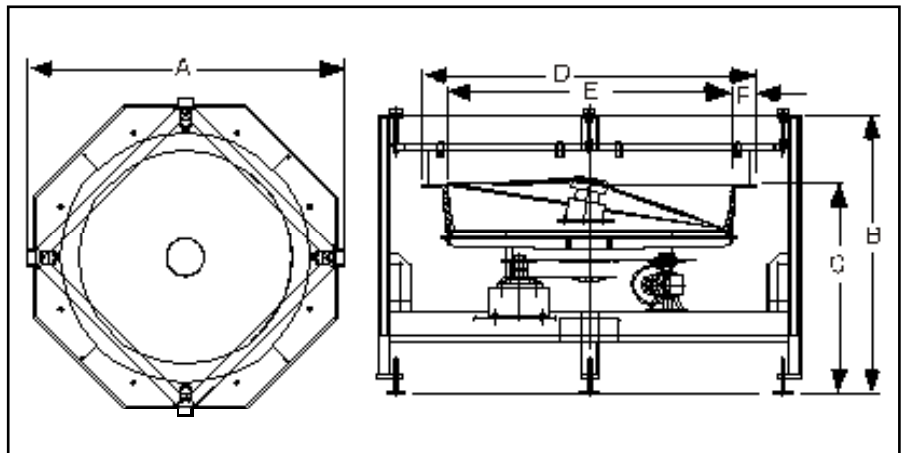
| | CW | CCW |
|-------------------|-----------------|-----------|
| Backup Ring | BUCWFT60SU..... | BUCCF60SU |

Standard Features:

- All stainless steel construction
- FDA approved ABS vacuum formed disc
- Teflon hard-coated finished aluminium bowl

Available Options:

- Polycarbonate covers
- Dual motor drive system
- Washdown motor(s)
- NEMA 1 encased controller



Shibuya Hoppmann Corporation strives to improve its products and reserves the right to change or discontinue specifications & designs shown in this brochure without notice and without incurring obligation. 01/07

Packaging - Processing
Bid on Equipment
 1-847-683-7720
www.bid-on-equipment.com

www.shibuyahoppmann.com • www.shibuya.co.jp • email: sales@hoppmann.com