



EP-35 & EP-50 Elevating Prefeeder Designed for Floor Level Parts Loading



Product Overview:

Hoppmann's standard EP-35/EP-50 elevating prefeeder is designed to handle a variety of large, lightweight parts. Its thirty-five (35) cubic foot capacity hopper delivers product at an average belt speed of 23 feet per minute. The cleated elevator belt has a nominal cleat height of 3.00" and a cleat pitch of 12.00" allowing for maximum product loading. A heavy duty variable speed motor helps to ensure proper product metering.

Product Specifications:

	ANSI	Metric
A. Overall Width	72"	1829mm
B. Overall Length	95"	2413mm
C. Lower Chassis Footprint	76.62"	1947mm
D. Dump Height (Adjustable)	45 - 58"	1143-1473mm
E. Hopper Load Ht. (35 ft ³)	45"	1143mm
Hopper Load Ht. (50 ft ³)	51"	1295mm
F. Belt Width	18"	457mm

Standard Models:

Part Number	EP3518XDSA	EP3518XASA
Motor Style	DC	AC
Motor Voltage	90V	230/460V
Horsepower	1/2 hp	373 W
Total Equipment Weight	1200 lbs.	544 kg
Hopper Capacity (EP-35)	35 ft ³	991 liters
Hopper Capacity (EP-50)	50 ft ³	1416 liters

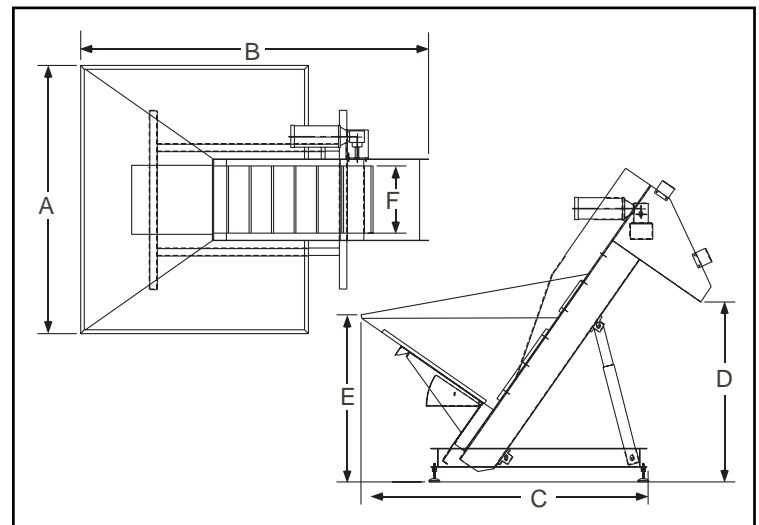
Standard Features:

- All stainless steel construction
- Belting is FDA/USDA approved white 1-ply solid woven polyester fabric with .156" thick white PVC coating and PVC cleats
- Hopper cleanout door
- Panel mount controller card
- Mechanical style level sensor mounting kit – proximity sensor not included (P/N LEVSENPKG1)

Available Options:

- Elevator extensions*
- Hopper extension for 50 ft³ capacity
- Continuous welded hopper seams
- Elevator/hopper covers
- Modular plastic chain upgrade
- Washdown motor
- NEMA 1 encased controller
- Casters

**It is strongly recommended that the frame of the prefeeder be reinforced and/or additionally supported for elevator extensions of 54" or greater.*



Hoppmann Corporation strives to improve its products and reserves the right to change or discontinue specifications & designs shown in this brochure without notice and without incurring obligation. 06/05

Packaging - Processing
Bid on Equipment
1-847-683-7720
www.bid-on-equipment.com

Hoppmann Corporation Headquarters
13129 Airpark Drive • Suite 120 • Elkwood, VA 22718
Tel: 540.829.2564 • 800.368.3582 • Fax: 540.829.1724
www.hoppmann.com • email: feeder@hoppmann.com

Hoppmann Corporation Manufacturing
P.O. Box 879 • 291 Dillard Rd. • Madison Heights, VA 24572
Tel: 434.929.4746 • 800.543.0915 • Fax: 434.929.4959
www.hoppmann.com • email: feeder@hoppmann.com